

WAAS CH 78044 W23A	APP CRS 228°	Rwy ldg TDZE Apt Elev	5564 1576 1576
--	------------------------	-----------------------------	---

RNAV (GPS) RWY 23

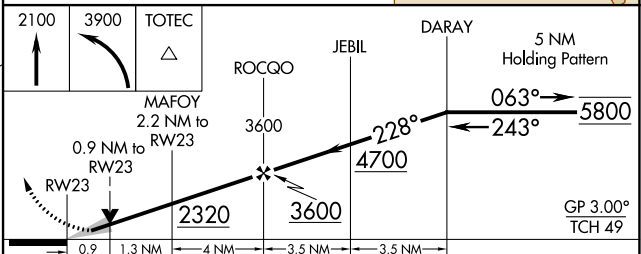
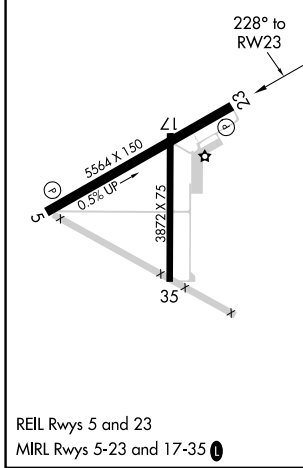
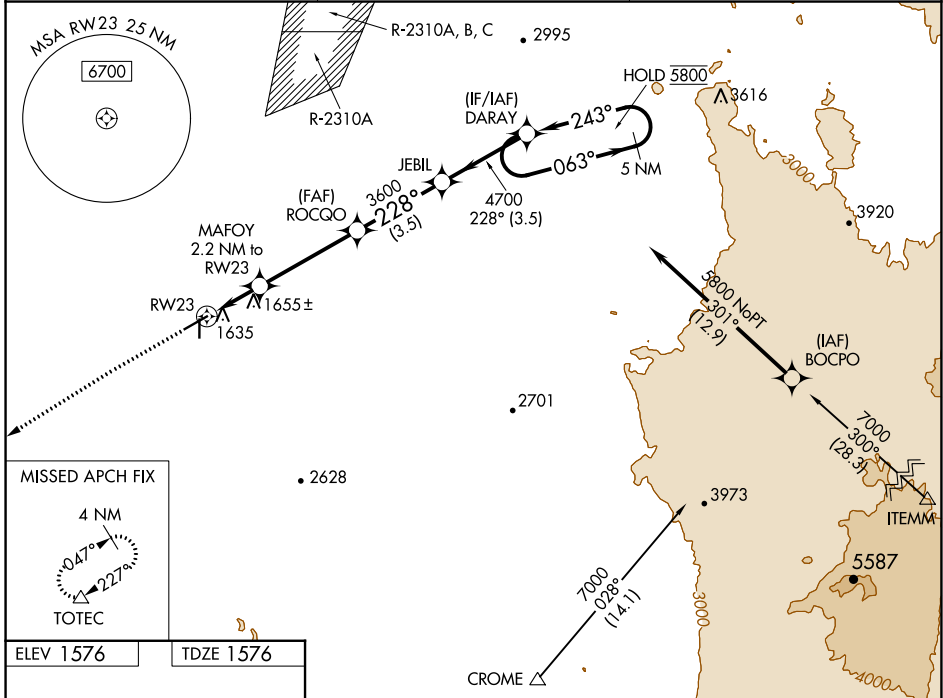
COOLIDGE MUNI (P08)

RNP APCH-GPS.

⚠ Circling Rwy 17, 35 NA at night. For uncompensated Baro-VNAV systems, LNAV/VNAV NA below -18°C or above 54°C.

⚠ MISSED APPROACH: Climb to 2100 then climbing left turn to 3900 direct TOTEC and hold.

AWOS-3PT 119.35	ALBUQUERQUE CENTER 125.4 269.3	UNICOM 123.075 (CTAF) 1
---------------------------	--	--



CATEGORY	A	B	C	D
LPV DA	1826-3/4	250 (300-3/4)		NA
LNAV/VNAV DA	1826-3/4	250 (300-3/4)		NA
LNAV MDA	1920-1	344 (400-1)		NA
C CIRCLING	2100-1	524 (600-1)		NA

SW-4, 22 FEB 2024 to 21 MAR 2024

SW-4, 22 FEB 2024 to 21 MAR 2024

VORTAC TFD 114.8 Chan 95	APP CRS 071°	Rwy Idg TDZE 1564 Apt Elev 1576
--	------------------------	---

VOR RWY 5

COOLIDGE MUNI (P08)

DME required.

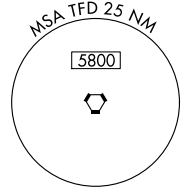
⚠ Circling Rwy 17-35 NA at night.

MISSED APPROACH: Climb to 2300 then climbing left turn to 3500 on TFD VORTAC R-071 to AZEKE/19 DME and hold.

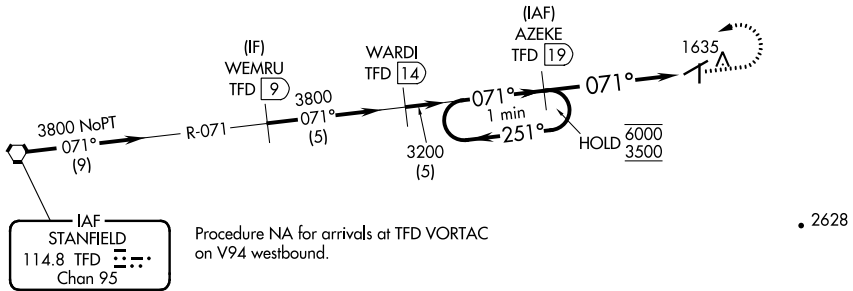
AWOS-3PT
119,350

ALBUQUERQUE CENTER
125.4 269.3

UNICOM
123.075 (CTAF) 0



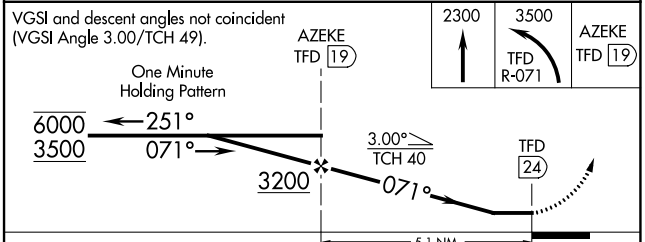
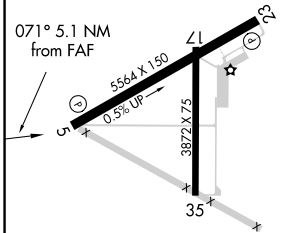
2874



SW-4, 22 FEB 2024 to 21 MAR 2024

SW-4, 22 FEB 2024 to 21 MAR 2024

ELEV 1576 TDZE 1564



CATEGORY	A	B	C	D
S-5	2200-1	636 (700-1)	NA	
C CIRCLING	2200-1	624 (700-1)	NA	