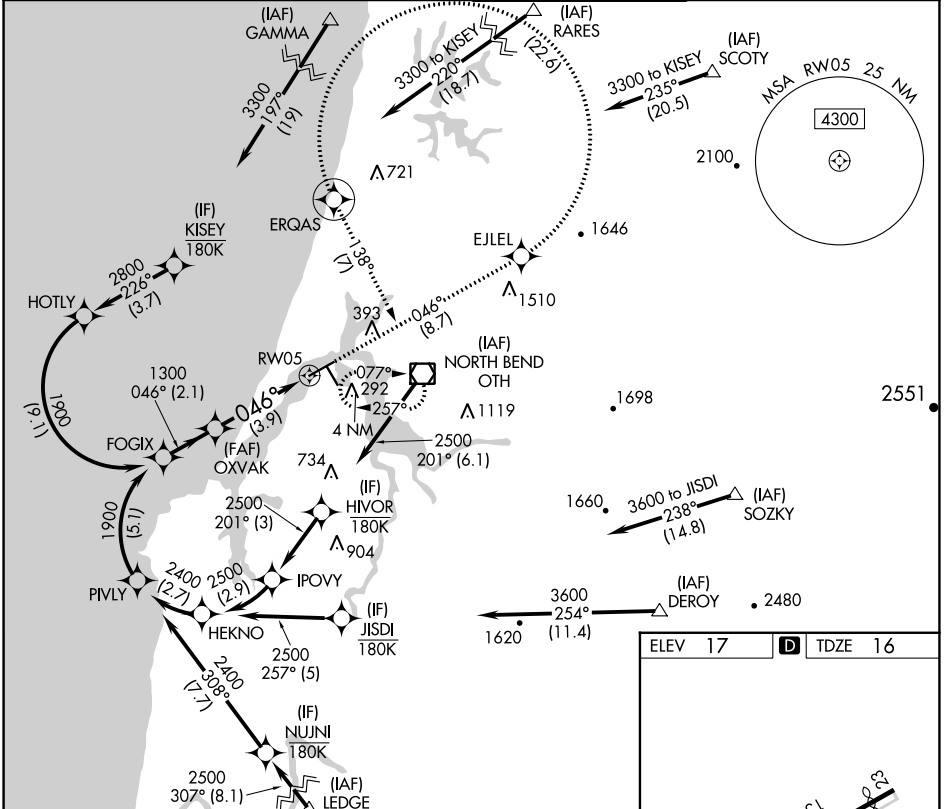


APP CRS	Rwy Idg	5320
046°	TDZE	16
	Apt Elev	17

RNAV (RNP) Z RWY 5

SOUTHWEST OREGON RGNL (OTH)

RNP AR APCH. RF required.		MALSR	MISSED APPROACH: Climb to 3300 on track 046° to EJLEL, left turn to ERQAS, and on track 138° to OTH VOR/DME and hold. *Missed approach requires minimum climb of 400 feet per NM to 1200. #Missed approach requires minimum climb of 255 feet per NM to 2400.	
<p>For inop ALS, increase *RNP 0.11 all Cats visibility to 1 SM, #RNP 0.30 all Cats visibility to 1 1/8 SM, and RNP 0.30 all Cats visibility to 1 1/8 SM. For uncompensated Baro-VNAV systems, procedure NA below -2°C or above 54°C.</p>				
AWOS-3PT	SEATTLE CENTER	NORTH BEND TOWER*		GND CON
135.075	127.55 254.35	118.45 (CTAF)		127.1



NW-1, 22 FEB 2024 to 21 MAR 2024

NW-1, 22 FEB 2024 to 21 MAR 2024

See planview for multiple IF locations.			
FOGIX	OXVAK	EJLEL	ERQAS
1900	1300	3300	tr 138°
GP 3.00°			OTH
TCH 51			
2.1 NM		3.9 NM	
CATEGORY	A	B	C
RNP 0.11 DA*		394-5/8	378 (400-3/8)
RNP 0.30 DA#		477-1 1/8	461 (500-1 1/8)
RNP 0.30 DA		569-1 3/8	553 (600-1 3/8)
AUTHORIZATION REQUIRED			

ELEV 17	TDZE 16
---------	---------

HIRL Rwy 5-23
MIRL Rwy 13-31
REIL Rwys 13, 23 and 31