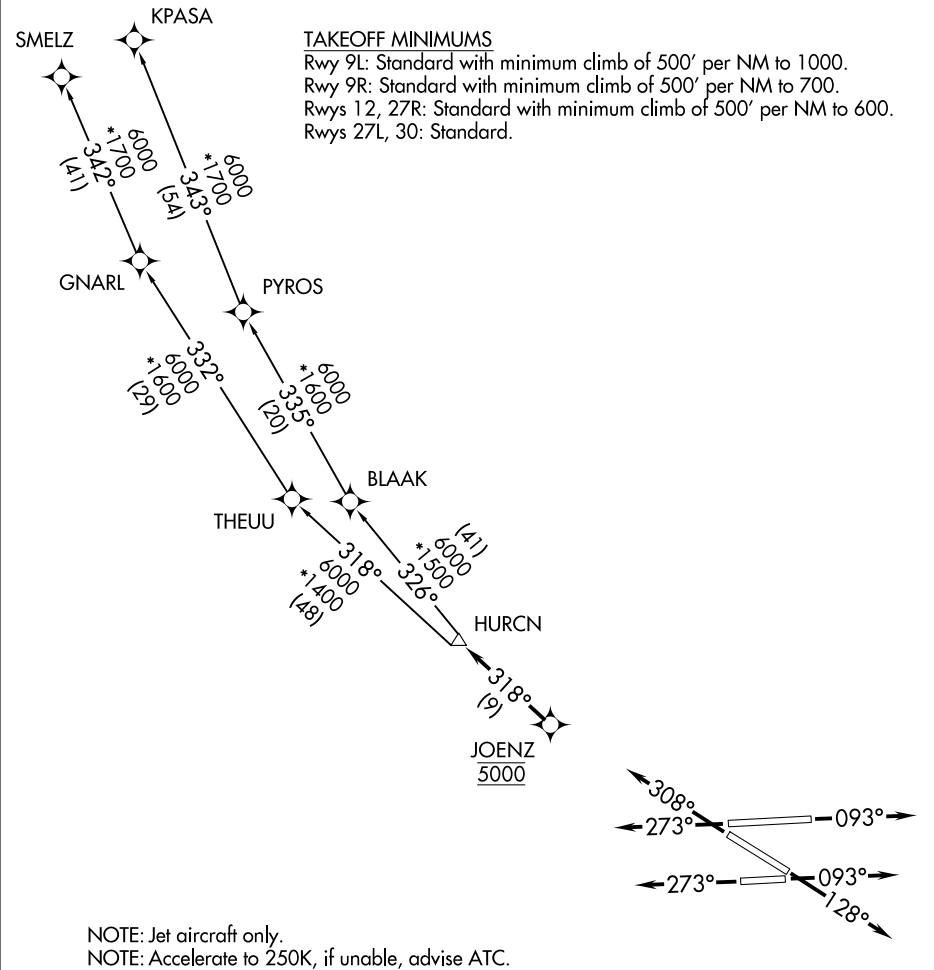


RNAV-1 DME/DME/IRU or GPS.	TOP ALTITUDE: ASSIGNED BY ATC	ATIS 125.9 CLNC DEL 119.2 GND CON 120.025 OPA LOCKA TOWER ★ 134.675 (CTAF) MIAMI DEP CON 119.45 290.325
RADAR required.		



DEPARTURE ROUTE DESCRIPTION	
<div><div>▼</div><div><div><div><div><div>TAKEOFF RUNWAYS 9L/R:</div><div>Climb on heading 093° or as assigned for RADAR vectors to cross JOENZ at 5000, thence. . .</div></div><div><div>TAKEOFF RUNWAY 12:</div><div>Climb on heading 128° or as assigned for RADAR vectors to cross JOENZ at 5000, thence. . .</div></div><div><div>TAKEOFF RUNWAYS 27L/R:</div><div>Climb on heading 273° or as assigned for RADAR vectors to cross JOENZ at 5000, thence. . .</div></div><div><div>TAKEOFF RUNWAY 30:</div><div>Climb on heading 308° or as assigned for RADAR vectors to cross JOENZ at 5000, thence. . .</div></div></div><div><div>. . .on track 318° to HURCN, then on transition. Maintain ATC assigned altitude, expect clearance to filed altitude within 10 minutes after departure.</div></div><div><div>KPASA TRANSITION (HURCN3.KPASA)</div><div>SMELZ TRANSITION (HURCN3.SMELZ)</div></div></div></div></div>	