

(ALTNN1.ALTNN) 22139

AL-256 (FAA)

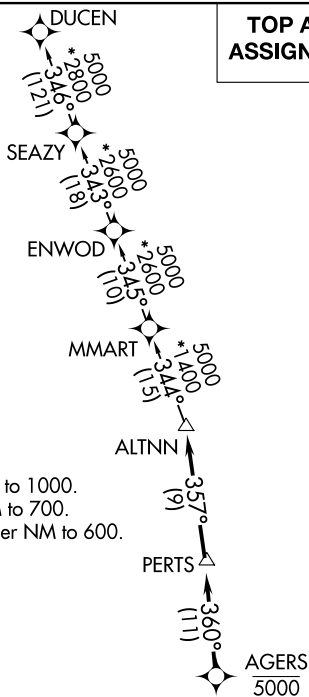
MIAMI-OPA LOCKA EXEC (OPF')
MIAMI, FLORIDA

ALTNN ONE DEPARTURE (RNAV)

ATIS
125.9
CLNC DEL
119.2
GND CON
120.025
OPA LOCKA TOWER *
134.675 (CTAF)
MIAMI DEP CON
119.45 290.325

RNAV 1 - DME/DME/IRU or GPS.
RADAR required.

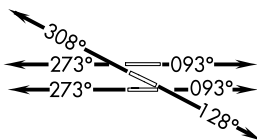
**TOP ALTITUDE:
ASSIGNED BY ATC**



TAKEOFF MINIMUMS

Rwy 9L: Standard with minimum climb of 500' per NM to 1000.
Rwy 9R: Standard with minimum climb of 500' per NM to 700.
Rwys 12, 27R: Standard with minimum climb of 500' per NM to 600.
Rwys 27L, 30: Standard.

NOTE: Jet aircraft only.
NOTE: Accelerate to 250K, if unable, advise ATC.



NOTE: Chart not to scale.

DEPARTURE ROUTE DESCRIPTION

TAKEOFF RUNWAYS 9L/R: Climb on heading 093° or as assigned for RADAR vectors to cross AGERS at 5000, thence. . . .

TAKEOFF RUNWAY 12: Climb on heading 128° or as assigned for RADAR vectors to cross AGERS at 5000, thence. . . .

TAKEOFF RUNWAYS 27L/R: Climb on heading 273° or as assigned for RADAR vectors to cross AGERS at 5000, thence. . . .

TAKEOFF RUNWAY 30: Climb on heading 308° or as assigned for RADAR vectors to cross AGERS at 5000, thence. . . .

. . . . on track 360° to PERTS, then on track 357° to ALTNN, then on assigned transition, maintain ATC assigned altitude, expect filed altitude within 10 minutes after departure.

DUCEN TRANSITION (ALTNN1.DUCEN)

ALTNN ONE DEPARTURE (RNAV)
(ALTNN1.ALTNN) 19MAY22

MIAMI, FLORIDA
MIAMI-OPA LOCKA EXEC (OPF')

SE-3, 22 FEB 2024 to 21 MAR 2024

SE-3, 22 FEB 2024 to 21 MAR 2024