

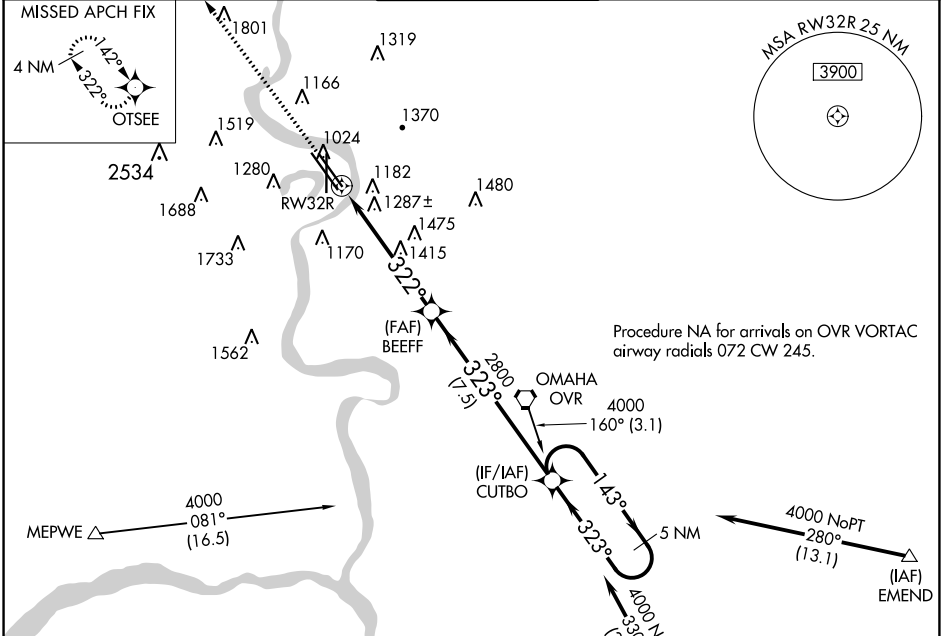
WAAS CH 90599 W32B	APP CRS 322°	Rwy Idg TDZE Apt Elev	8500 981 985
--	------------------------	-----------------------------	---

RNAV (GPS) Y RWY 32R

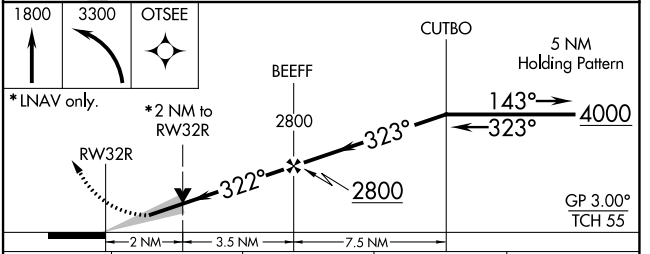
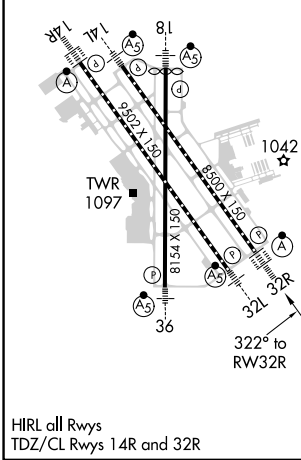
EPPLEY AIRFIELD (OMA)

⚠ For uncompensated Baro-VNAV systems, LNAV/VNAV NA below -19°C (-2°F) or above 37°C (99°F). DME/DME RNP-0.3 NA. For inop ALS, increase LNAV/VNAV all Cats visibility to 1¼ SM.	ALSF-2 	MISSED APPROACH: Climb to 1800 then climbing left turn to 3300 direct OTSEE and hold.
--	------------	---

D-ATIS 120.4	OMAHA APP CON 120.1 354.05	OMAHA TOWER 132.1 256.9	GND CON 121.9	CLNC DEL 119.9
------------------------	--------------------------------------	-----------------------------------	-------------------------	--------------------------



ELEV 985	D	TDZE 981
----------	----------	----------



CATEGORY	A	B	C	D
LPV DA		1181/18	200 (200-½)	
LNAV/VNAV DA		1611-1¾	630 (700-1¾)	
LNAV MDA	1680/24	699 (700-½)	1680-1½	699 (700-1½)
C CIRCLING	1680-1	695 (700-1)	2000-3 1015 (1100-3)	2040-3 1055 (1100-3)

NC-2, 22 FEB 2024 to 21 MAR 2024

NC-2, 22 FEB 2024 to 21 MAR 2024