

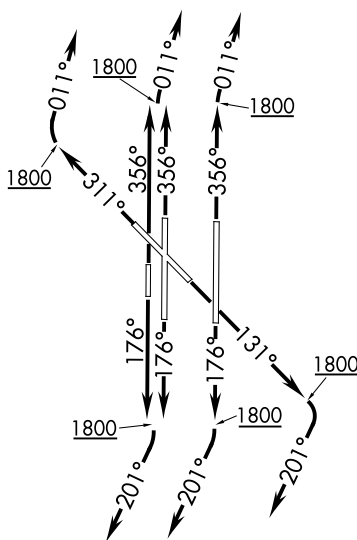
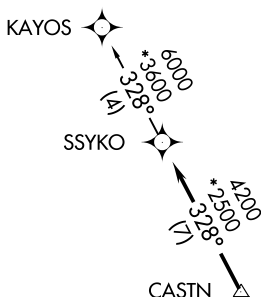
SSYKO THREE DEPARTURE (RNAV)

D-ATIS 125.85
CLNC DEL
124.35
GND CON
121.9 348.6
ROGERS TOWER
119.35 269.45
OKE CITY DEP CON
124.2 336.4

**TOP ALTITUDE:
ASSIGNED BY ATC**

TAKEOFF MINIMUMS:

Rwys 13, 17L/R, 18, 31, 35L/R, 36:
Standard with minimum climb of 500'
per NM to 1800.



NOTE: RADAR required.
NOTE: DME/DME/IRU or GPS required.
NOTE: RNAV 1.

NOTE: Chart not to scale.

DEPARTURE ROUTE DESCRIPTION

TAKEOFF RWY 13: Climb heading 131° to 1800, then right turn heading 201°
or as assigned by ATC, expect RADAR vectors to CASTN, thence

TAKEOFF RWY 17L/R, 18: Climb heading 176° to 1800, then right turn heading 201°
or as assigned by ATC, expect RADAR vectors to CASTN, thence

TAKEOFF RWY 31: Climb heading 311° to 1800, then right turn heading 011°
or as assigned by ATC, expect RADAR vectors to CASTN, thence

TAKEOFF RWY 35L/R, 36: Climb heading 356° to 1800, then right turn heading 011°
or as assigned by ATC, expect RADAR vectors to CASTN, thence

. . . on track 328° to SSYKO, then on (transition). Maintain 5000 or as assigned by ATC. Expect filed altitude 10 minutes after departure.

KAYOS TRANSITION (SSYKO3.KAYOS):

SSYKO THREE DEPARTURE (RNAV)

(SSYKO3.SSYKO) 07DEC17

OKLAHOMA CITY, OKLAHOMA
WILL ROGERS WORLD (OKC)