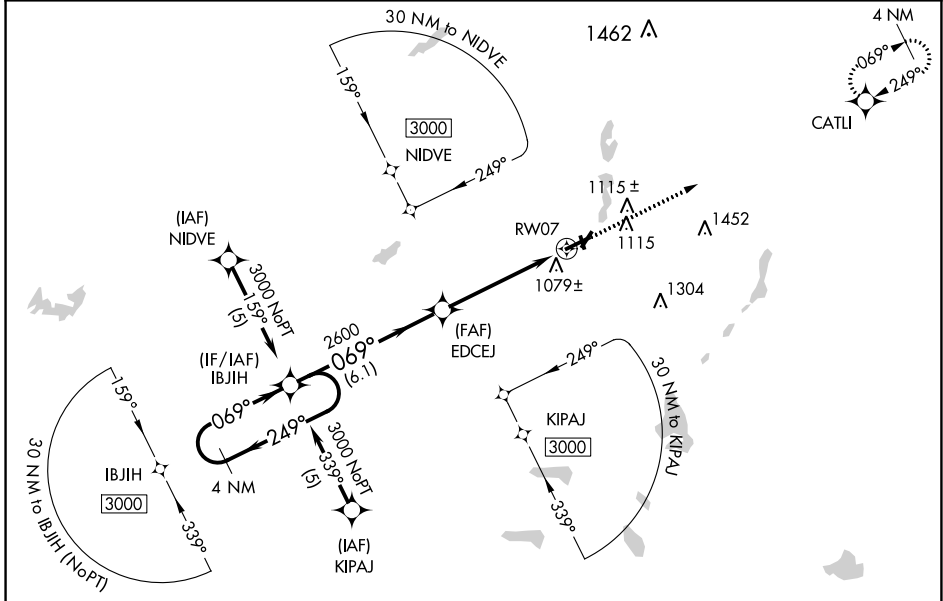


| | | | |
|--|------------------------|-----------------------------|---|
| WAAS CH 56506 W07A | APP CRS 069° | Rwy Idg TDZE Apt Elev | 5350 958 958 |
|--|------------------------|-----------------------------|---|

RNAV (GPS) RWY 7
BRANCH COUNTY MEML (OEB)

RNP APCH.
 ⚠ Rwy 7 helicopter visibility reduction below 3/4 SM NA. Baro-VNAV NA when using Sturgis altimeter setting. For uncompensated Baro-VNAV systems, LNAV/VNAV NA below -16°C or above 54°C. Circling NA to Rwy 16 and 34. When local altimeter setting not received, use Sturgis altimeter setting and increase all DAs 48 feet and LPV visibility 1/4 mile all Cats and all MDAs 60 feet and LNAV Cat C visibility 1/4 mile.
 MISSED APPROACH: Climb to 3000 direct CATLI and hold.

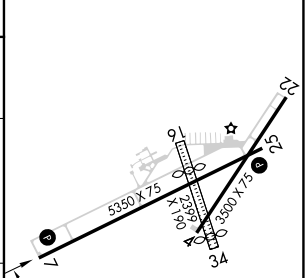
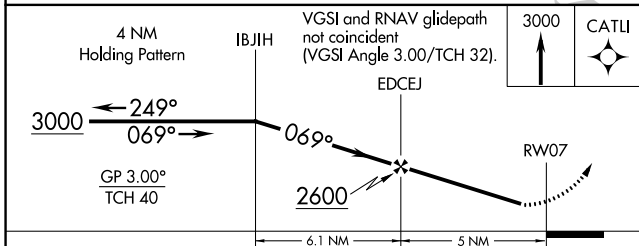
| | | |
|--------------------------|--|-------------------------------|
| AWOS-3 118.125 | GREAT LAKES APP CON * 121.2 239.25 | UNICOM 122.7 (CTAF) |
|--------------------------|--|-------------------------------|



EC-1, 22 FEB 2024 to 21 MAR 2024

EC-1, 22 FEB 2024 to 21 MAR 2024

| | |
|----------|----------|
| ELEV 958 | TDZE 958 |
|----------|----------|



| CATEGORY | A | B | C | D |
|--------------|-----------------------|-----------------------|-------------------------------|----|
| LPV DA | 1306-1 1/4 | 348 (400-1 1/4) | | NA |
| LNAV/VNAV DA | 1417-1 3/4 | 459 (500-1 3/4) | | NA |
| LNAV MDA | 1420-1 | 462 (500-1) | 1420-1 1/4 462 (500-1 1/4) | NA |
| CIRCLING | 1420-1 462 (500-1) | 1440-1 482 (500-1) | 1560-1 3/4 602 (700-1 3/4) | NA |

MIRL Rwy 4-22 and 7-25
REIL Rwy 7 and 25