

TACAN NUQ Chan 123 (117.6)	APP CRS 321°	Rwy ldg TDZE 31 Apt Elev 37
--	------------------------	---

TACAN RWY 32R

MOFFETT FEDERAL AIRFIELD (NUQ)

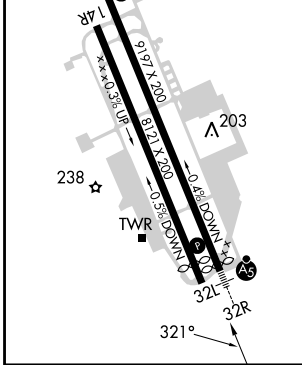
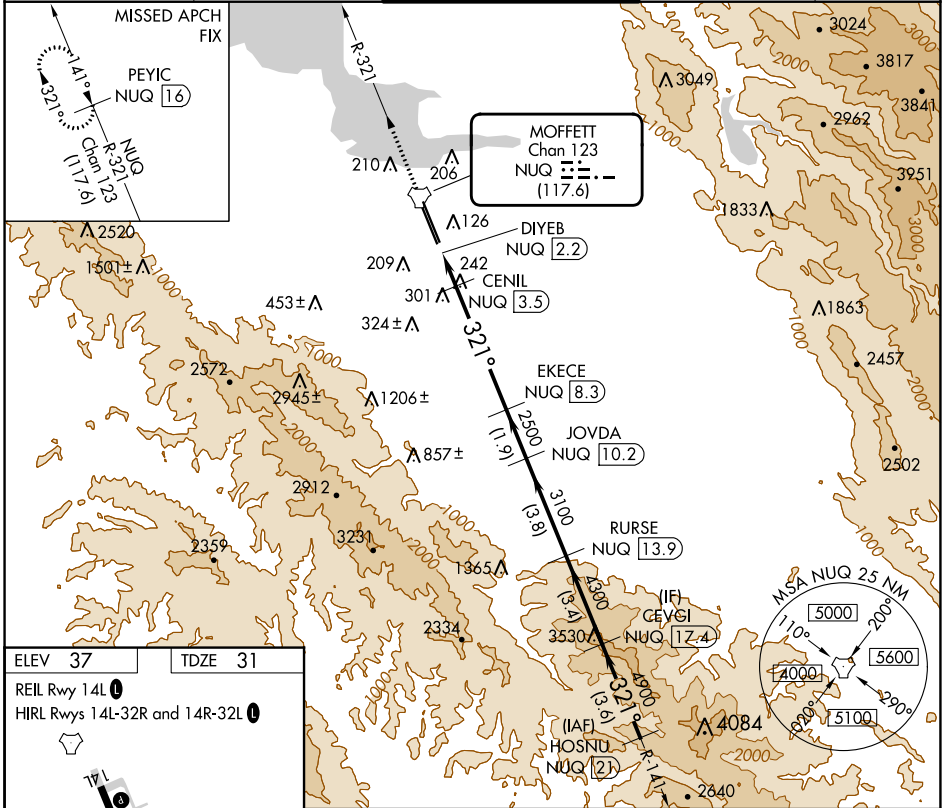
RADAR required for procedure entry.

For inop ALS, increase Cat E visibility to 1 1/2 SM.

MALS R

MISSED APPROACH: Climb to 3200 on NUQ TACAN R-321 to PEYIC/16 DME and hold.

ATIS 124.175 283.0	NORCAL APP CON 120.1 290.25	MOFFETT TOWER ★ 119.55 (CTAF) 259.65	GND CON 121.85 278.95	CLNC DEL 296.75
------------------------------	---------------------------------------	--	---------------------------------	---------------------------



ELEV 37	TDZE 31	REIL Rwy 14L					HIRL Rws 14L-32R and 14R-32L				
3200	PEYIC NUQ 16	VGSI and descent angles not coincident (VGSI Angle 3.00/TCH 55).					CEVGI NUQ 17.4	HOSNU NUQ 21			
	EKECE NUQ 8.3	JOVDA NUQ 10.2	RURSE NUQ 13.9	CEVGI NUQ 17.4	HOSNU NUQ 21	5500					
	DIYEB NUQ 2.2	CENIL NUQ 3.5	3.48° TCH 55	2500	3100	4300	4900				
	0.5	1.3 NM	4.8 NM	1.9 NM	3.8 NM	3.4 NM	3.6 NM				
CATEGORY	A	B	C	D	E						
S-32R	560-1/2	529 (600-1/2)	560-1	529 (600-1)							
CIRCLING	560-1	600-1	620-1/2	780-2/2	940-3						
	523 (600-1)	563 (600-1)	583 (600-1/2)	743 (800-2/2)	903 (1000-3)						

SW-2, 22 FEB 2024 to 21 MAR 2024

SW-2, 22 FEB 2024 to 21 MAR 2024