

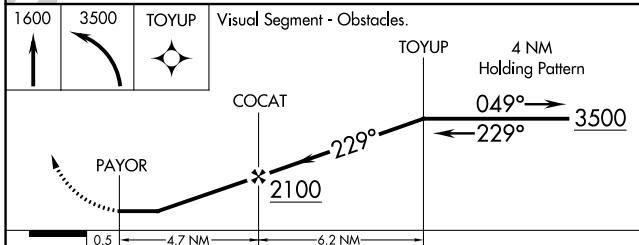
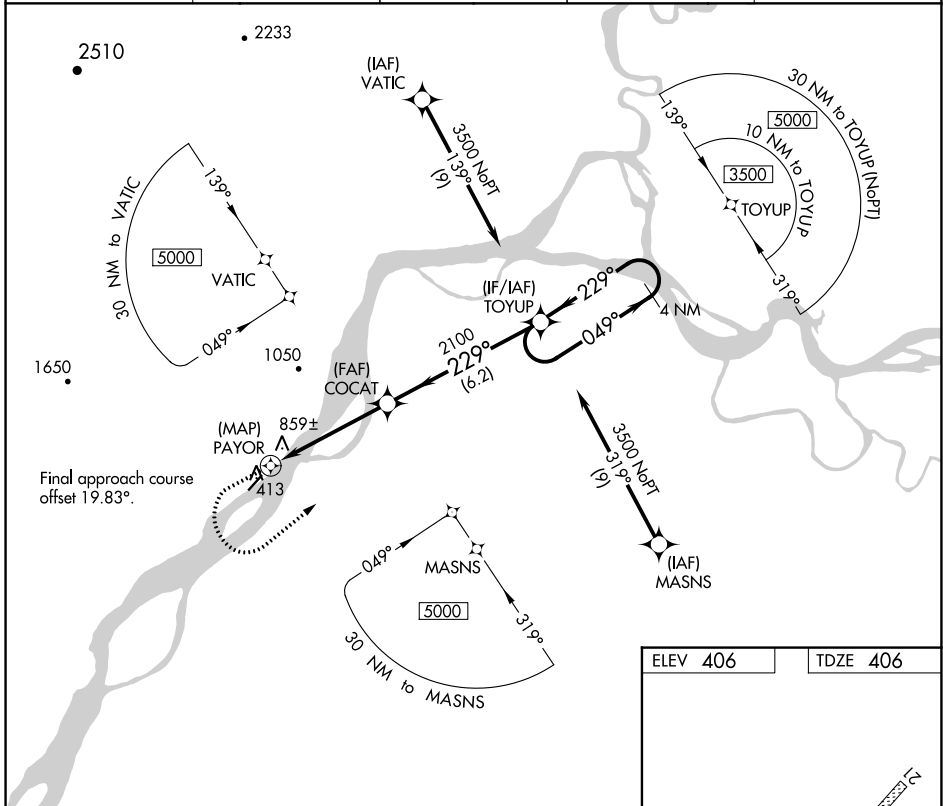
# RNAV (GPS) RWY 21

NULATO (NUL) (PANU)

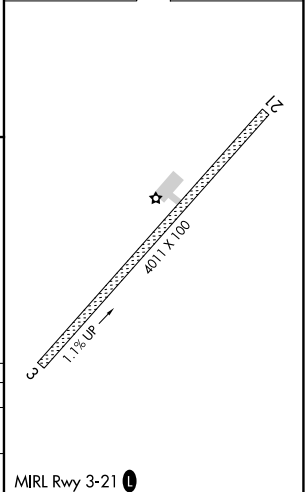
APP CRS <b>229°</b>	Rwy Idg <b>4011</b>
	TDZE <b>406</b>
	Apt Elev <b>406</b>

<p><b>▼</b> Rwy 21 helicopter visibility reduction below 1 SM NA.  <b>▲ NA</b> DME/DME RNP-0.3 NA. Use Galena altimeter setting.          Procedure NA at night.</p>	<p>MISSED APPROACH: Climb to 1600 then climbing left turn to 3500 direct TOYUP and hold.</p>
--	--

AWOS-3PT <b>118.0</b>	GAL/PAGA AWOS-3P <b>132.525</b>	ANCHORAGE CENTER <b>127.0 290.2</b>	FAIRBANK RADIO <b>122.2</b>	UNICOM <b>122.9</b>
--------------------------	------------------------------------	--	--------------------------------	------------------------



ELEV 406	TDZE 406
----------	----------



CATEGORY	A	B	C	D
LNVA MDA	1220-1 814 (900-1)	1220-1¼ 814 (900-1¼)	1220-2½	814 (900-2½)
<b>C</b> CIRCLING	1280-1¼ 874 (900-1¼)	1380-1½ 974 (1000-1½)	1420-3 1014 (1100-3)	1620-3 1214 (1300-3)

MIRL Rwy 3-21 **⓪**

AK, 25 JAN 2024 to 21 MAR 2024

AK, 25 JAN 2024 to 21 MAR 2024