

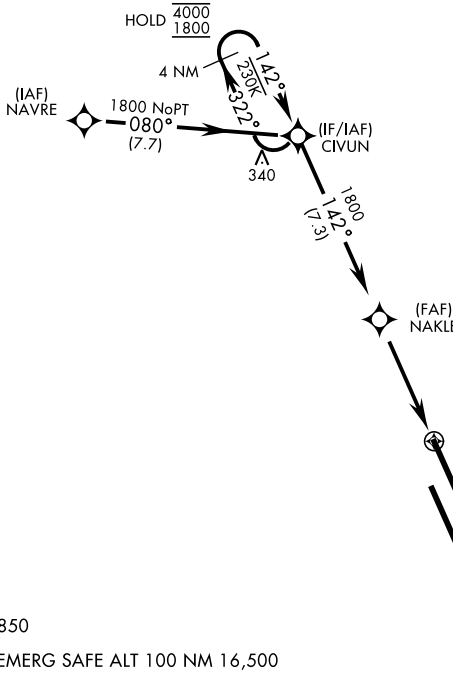
RNAV (GPS) RWY 14L

WAAS Chan 70209 W14A	APCH CRS 142°	Rwy Idg 13,502 TDZE 219 Arprt Elev 228
--	-------------------------	---

AL-5067 [USN]

LEMOORE NAS (REEVES FIELD) (KNLC)

<p>▼ DME/DME RNP-0.3 NA</p>		<p>MISSED APPROACH: Climb to 1200, then climb left turn to 2000 direct STRAT and hold.</p>			
<p>ATIS ★ 121.575 327.15</p>	<p>APP CON 124.1 269.025 (N) 118.15 269.025 (S)</p>	<p>TOWER ★ 128.3 340.2</p>	<p>GND CON 121.65 305.2</p>	<p>CLNC DEL 124.1 371.9</p>	<p>ASR/PAR</p>



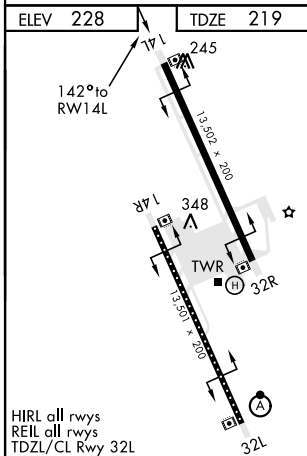
Simultaneous approaches authorized.
LNAV procedure NA during Simultaneous operations.
Use of FD or AP providing RNAV track guidance required during simultaneous operations.

For uncompensated Baro-VNAV systems, LNAV/VNAV procedure NA below -15°C (5°F) and above 54°C (129°F).

SW-2, 22 FEB 2024 to 21 MAR 2024

SW-2, 22 FEB 2024 to 21 MAR 2024

• 850
EMERG SAFE ALT 100 NM 16,500



ELEV 228	TDZE 219				
<p>4 NM Holding Pattern</p>		1200	2000	STRAT	
<p>CIVUN</p>		<p>NAKLE</p>		<p>0.8 NM to RWY 14L</p>	
<p>4000 ← 322°</p>		<p>142° →</p>		<p>1800</p>	
<p>1800</p>		<p>4.8 NM</p>		<p>RWY 14L</p>	
GP 3.00°	TCH 54				
CATEGORY	A	B	C	D	
LPV DA	419-3/4	200	(200-3/4)		
LNAV/VNAV DA	469-3/4	250	(300-3/4)		
LNAV MDA	520-1	301	(300-1)		
C CIRCLING	680-1	452 (500-1)	700-1 1/2	780-2	
			472 (500-1 1/2)	552 (600-2)	

RNAV (GPS) RWY 14L