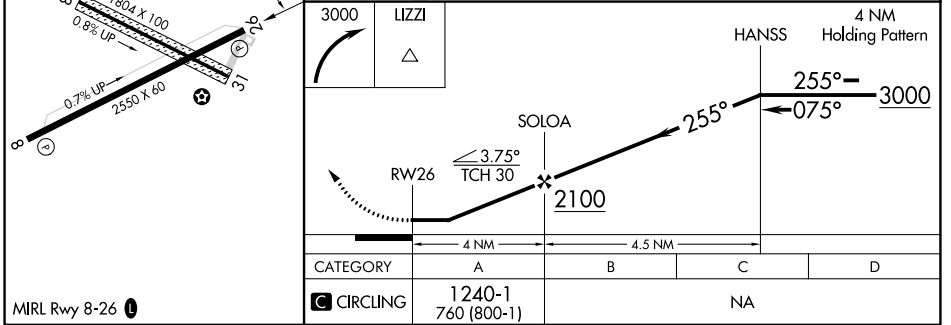
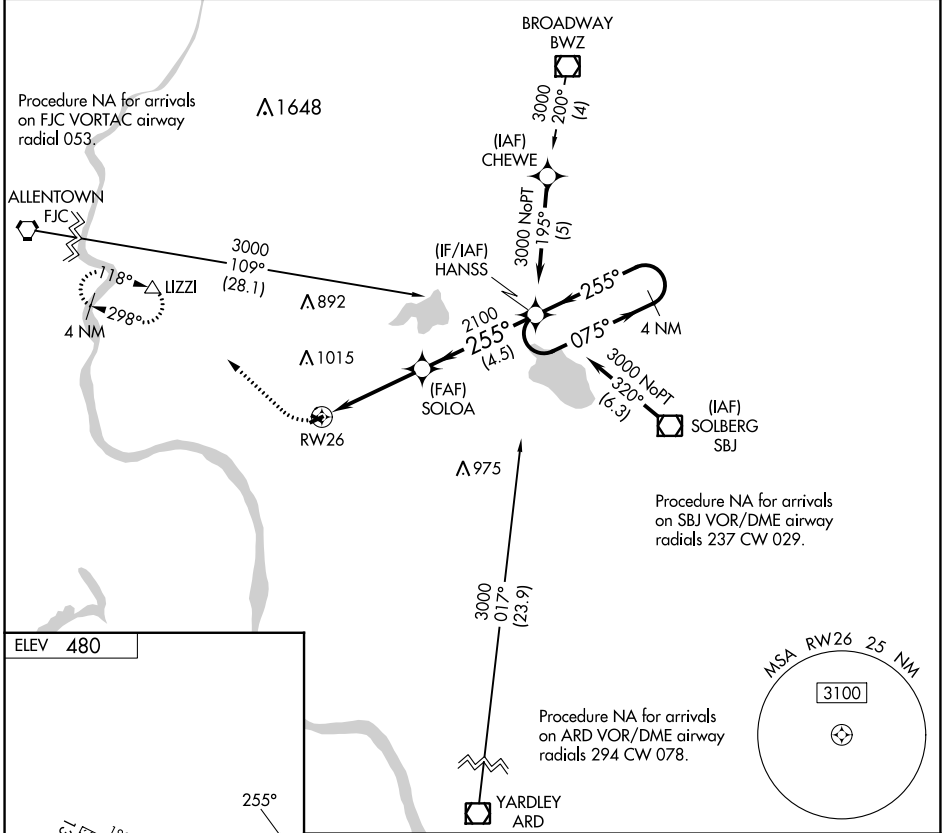


APP CRS	Rwy Idg	NA
255°	TDZE	NA
	Apt Elev	480

# RNAV (GPS)-B

## ALEXANDRIA (N85)

<p><b>▽</b> NA</p> <p>DME/DME RNP-0.3 NA. Use Lehigh Valley Intl, Allentown, PA altimeter setting. Procedure NA at night. Helicopter visibility reduction below 1 SM NA.</p>	<p>MISSED APPROACH: Climbing right turn 3000 direct LIZZI and hold.</p>
<p>ALLENTOWN APP CON</p> <p><b>119.65 124.45 351.8</b></p>	<p>UNICOM</p> <p><b>122.975 (CTAF)</b></p>
<p><b>121.8 0</b></p>	



NE-2, 22 FEB 2024 to 21 MAR 2024

NE-2, 22 FEB 2024 to 21 MAR 2024