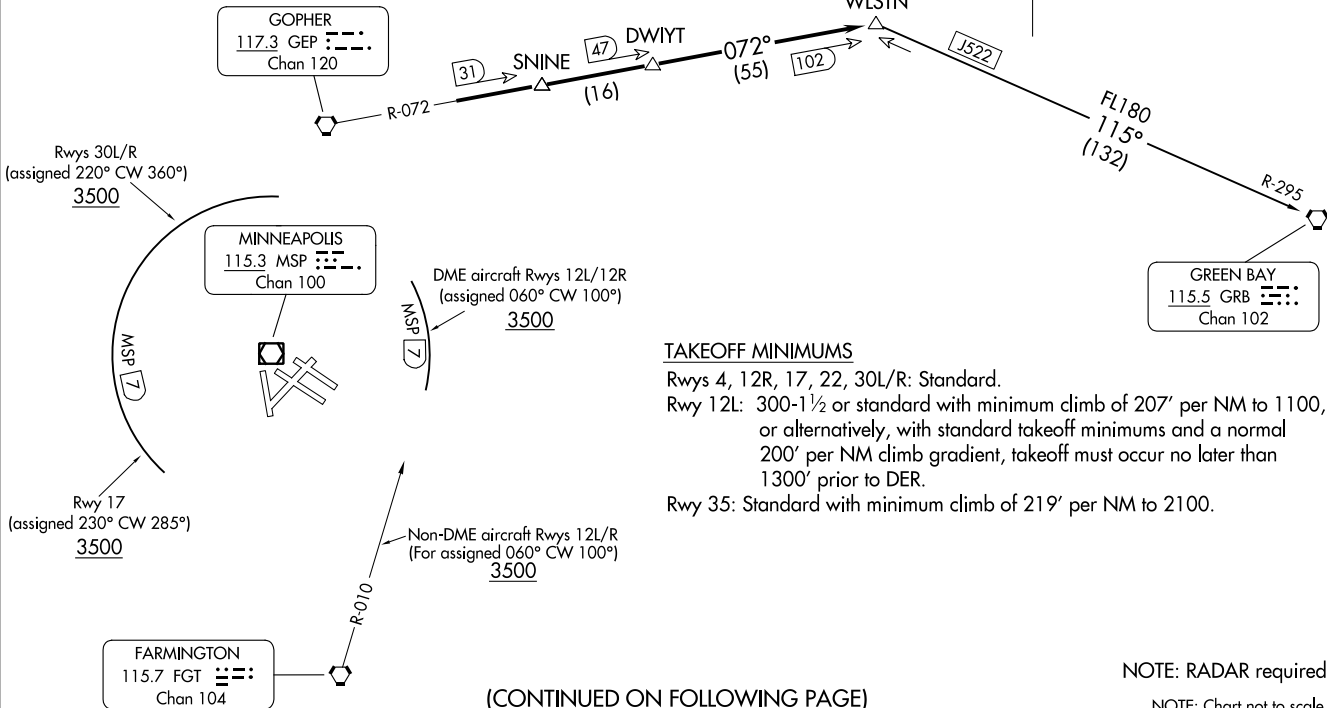


WLSTN SEVEN DEPARTURE  
(WLSTN7.WLSTN) 17AUG17

MINNEAPOLIS-ST PAUL INTL/WOLD-CHAMBERLAIN (MSP)  
MINNEAPOLIS, MINNESOTA

MINNEAPOLIS DEP CON  
SOUTH/EAST 124.7 335.65  
NORTH/WEST 125.75 335.65  
D-ATIS DEP 120.8  
CLNC DEL 133.2  
CPDLC  
MINNEAPOLIS TOWER  
123.95 273.55 (12L-30R)  
126.7 273.55 (12R-30L, 4-22)  
123.675 273.55 (17-35)

**TOP ALTITUDE:**  
(JETS) 7000/  
(PROPS) 5000



(CONTINUED ON FOLLOWING PAGE)

(WLSTN7.WLSTN) 23334  
WLSTN SEVEN DEPARTURE

MINNEAPOLIS-ST PAUL INTL/WOLD-CHAMBERLAIN (MSP)  
AL-264 (FAA)  
MINNEAPOLIS, MINNESOTA



DEPARTURE ROUTE DESCRIPTION

TAKEOFF ALL RUNWAYS: Fly assigned heading for RADAR vectors to GEP R-072 to WLSTN/GEP 102 DME. Turbojet aircraft maintain 7000 or lower assigned altitude, all other aircraft maintain 5000 or lower assigned altitude. Thence . . . .

DME EQUIPPED AIRCRAFT RUNWAYS 12L/R DEPARTURES: For assigned headings from 060° clockwise to 100°, cross MSP 7 DME at or above 3500, maintain assigned altitude. If unable to comply, advise ATC as soon as possible prior to departure, thence . . . .

NON-DME EQUIPPED AIRCRAFT RUNWAYS 12L/R DEPARTURES: For assigned headings from 060° clockwise to 100°, cross FGT R-010 at or above 3500, maintain assigned altitude. If unable to comply, advise ATC as soon as possible prior to departure, thence . . . .

TAKEOFF RUNWAY 17: For assigned headings from 230° clockwise to 285° cross MSP 7 DME at or above 3500, maintain assigned altitude. If unable to comply, advise ATC as soon as possible prior to departure, thence . . . .

TAKEOFF RUNWAYS 30L/R: For assigned headings from 220° clockwise to 360° cross MSP 7 DME at or above 3500, maintain assigned altitude. If unable to comply, advise ATC as soon as possible prior to departure, thence . . . .

TAKEOFF RUNWAYS 4, 22, 35: Initially assigned heading, thence . . . .

. . . .on assigned transition or assigned route. Expect clearance to filed altitude/flight level 10 (ten) minutes after departure.

GREEN BAY TRANSITION (WLSTN7.GRB): From over WLSTN on GRB R-295 to GRB VORTAC.

NC-1, 22 FEB 2024 to 21 MAR 2024

NC-1, 22 FEB 2024 to 21 MAR 2024