

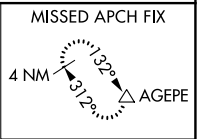
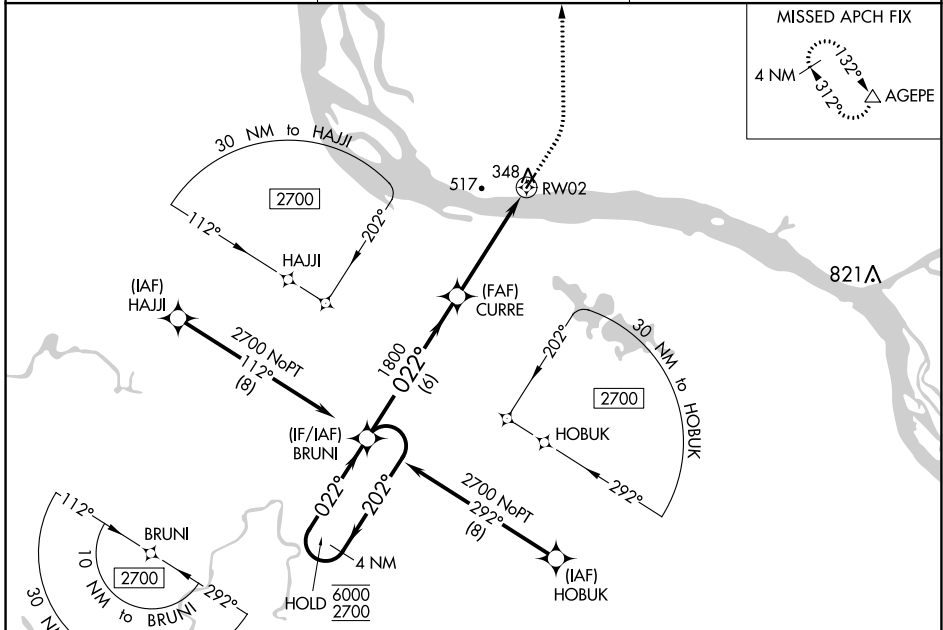
WAAS CH <b>56244</b> <b>W02A</b>	APP CRS <b>022°</b>	Rwy Idg TDZE Apt Elev	<b>3501</b> <b>334</b> <b>339</b>
--	------------------------	-----------------------------	---

# RNAV (GPS) RWY 2

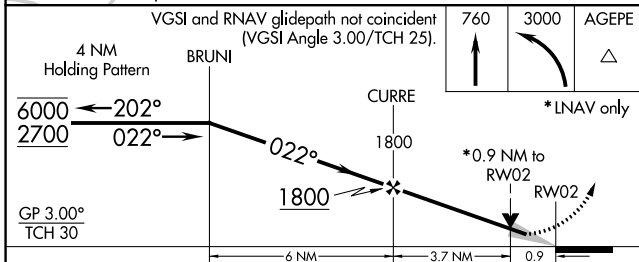
MOUNTAIN VILLAGE (MOU) (PAMO)

RNP APCH.  
 ▼ For uncompensated Baro-VNAV systems, LNAV/VNAV NA below -25°C or above 54°C.  
 MISSED APPROACH: Climb to 760 then climbing left turn to 3000 direct AGEPE and hold, continue climb-in-hold to 3000.

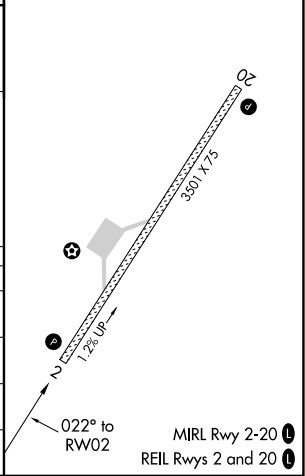
AWOS-3P <b>118.35</b>	ANCHORAGE CENTER <b>124.0</b>	CTAF <b>122.90</b>
--------------------------	----------------------------------	-----------------------



VGSI and RNAV glidepath not coincident (VGSI Angle 3.00/TCH 25).  
 760 3000 AGEPE  
 4 NM Holding Pattern BRUNI



ELEV 339	TDZE 334
----------	----------



CATEGORY	A	B	C	D
LPV DA		534-1	200 (200-1)	
LNAV/VNAV DA		584-1	250 (300-1)	
LNAV MDA		600-1	266 (300-1)	
<b>C</b> CIRCLING	700-1 361 (400-1)	840-1 501 (600-1)	840-1½ 501 (600-1½)	900-2 561 (600-2)

AK, 25 JAN 2024 to 21 MAR 2024

AK, 25 JAN 2024 to 21 MAR 2024