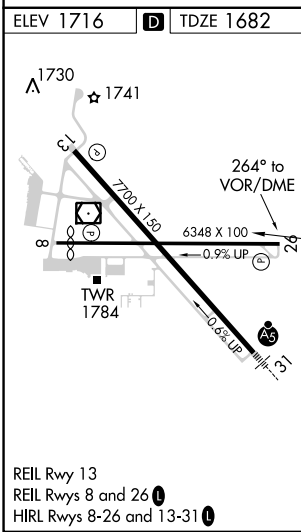
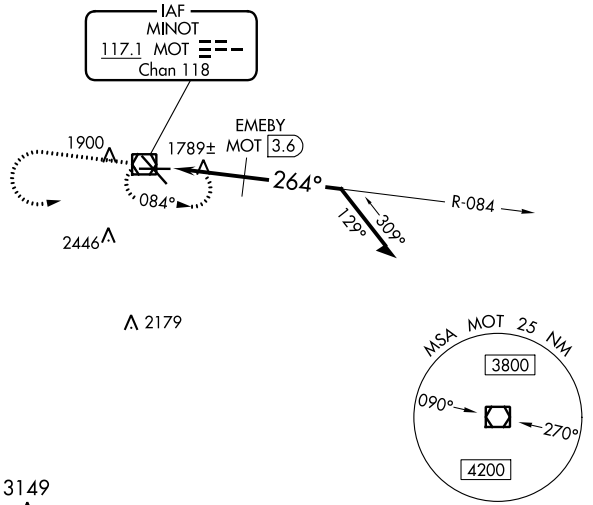


VOR/DME MOT <b>117.1</b> Chan <b>118</b>	APP CRS <b>264°</b>	Rwy Idg TDZE <b>1682</b> Apt Elev <b>1716</b>	<b>6348</b>
--	------------------------	---	-------------

# VOR RWY 26

MINOT INTL (MOT)

		MISSED APPROACH: Climb to 3600 then left turn direct MOT VOR/DME and hold.		
ASOS <b>118.725</b>	MINOT APP CON * <b>119.6 363.8</b>	MAGIC CITY TOWER * <b>118.2 (CTAF) 251.125</b>	GND CON <b>121.9</b>	UNICOM <b>122.95</b>



3149 Λ	3600	MOT	MOT VOR/DME	3500	084°	Remain within 10 NM
VGSI and descent angles not coincident (VGSI Angle 3.00/TCH 49).		MOT	EMEBY MOT 3.6	2540	264°	3400
		MOT	TCH 50	2540	2.91°	1.6 NM
CATEGORY	A	B	C	D		
S-26	2540-1 858 (900-1)	2540-1¼ 858 (900-1¼)	2540-2½ 858 (900-2½)	2540-2¾ 858 (900-2¾)		
CIRCLING	2540-1 824 (900-1)	2540-1¼ 824 (900-1¼)	2800-3	1084 (1100-3)		
EMEBY FIX MINIMUMS						
S-26	2040-1 358 (400-1)			2040-1¼ 358 (400-1¼)		
CIRCLING	2200-1 484 (500-1)	2240-1 524 (600-1)	2800-3	1084 (1100-3)		

NC-1, 22 FEB 2024 to 21 MAR 2024

NC-1, 22 FEB 2024 to 21 MAR 2024