

APP CRS	Rwy Idg	3060
013°	TDZE	1034
	Apt Elev	1042

RNAV (GPS) RWY 1

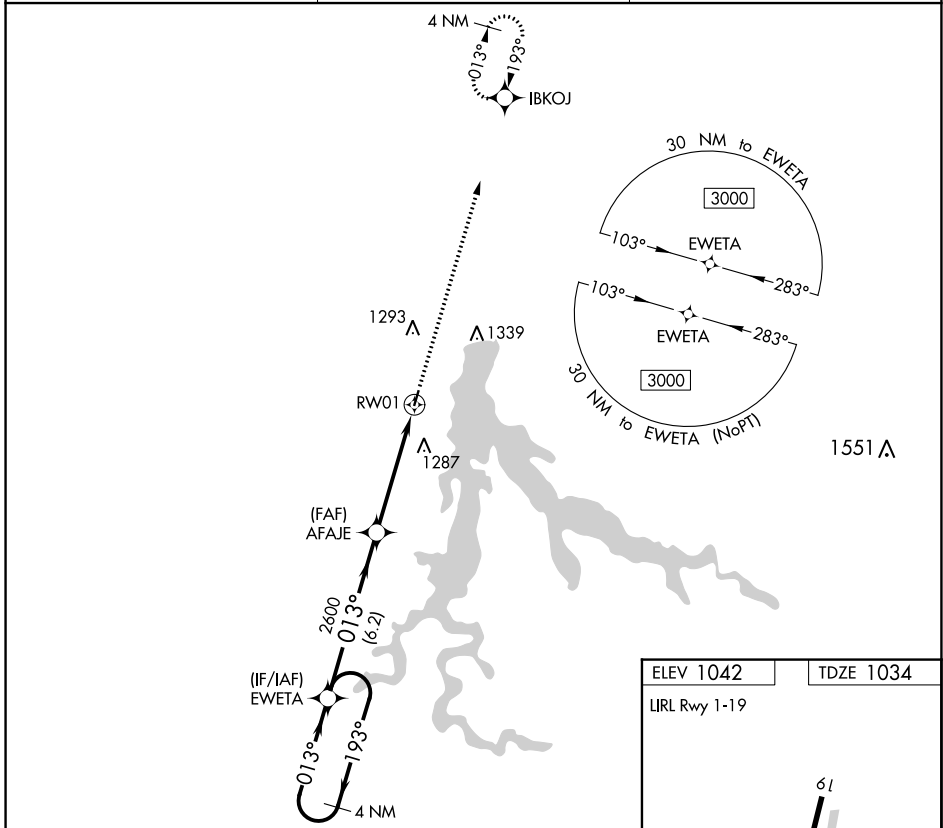
STOCKTON MUNI (MO3)

▽ Use Nevada altimeter setting; when not received, use Springfield altimeter setting and increase all MDA 40 feet. DME/DME RNP-0.3 NA. Helicopter visibility reduction below 1 SM NA. Procedure NA at night.

△ NA

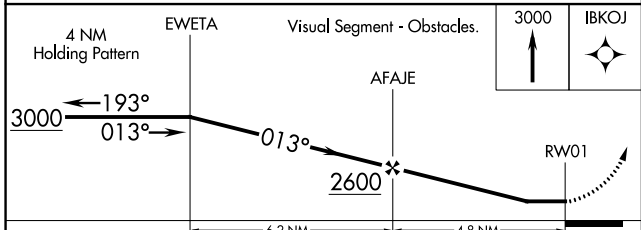
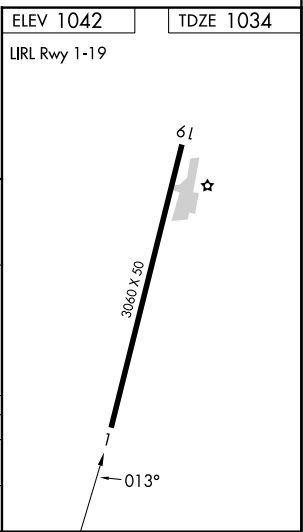
MISSED APPROACH: Climb to 3000 direct IBKOJ and hold.

NVD AWOS-3PT 119.175	SPRINGFIELD APP CON 124.95	CTAF 122.9
--------------------------------	--------------------------------------	----------------------



NC-3, 22 FEB 2024 to 21 MAR 2024

NC-3, 22 FEB 2024 to 21 MAR 2024



CATEGORY	A	B	C	D
LNVA MDA	1600-1	566 (600-1)	NA	
CIRCLING	1600-1 558 (600-1)	1700-1 658 (700-1)	NA	

WAAS CH 50334 W19A	APP CRS 193°	Rwy Idg 3060 TDZE 1037 Apt Elev 1042
--	------------------------	---

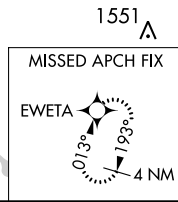
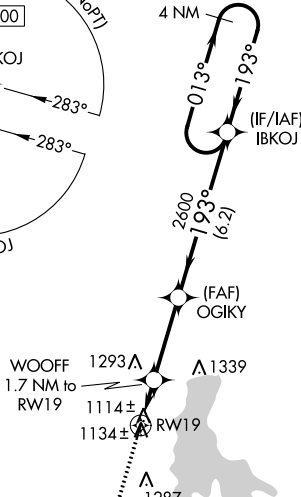
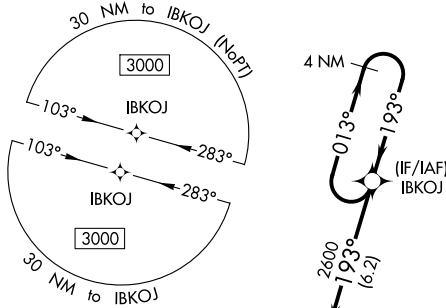
RNAV (GPS) RWY 19

STOCKTON MUNI (MO3)

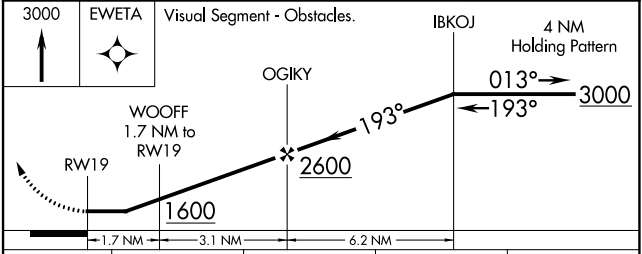
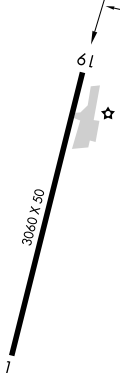
NA Procedure NA at night. Use Nevada altimeter setting; when not received, use Springfield altimeter setting and increase all MDA 40 feet. DME/DME RNP-0.3 NA. Helicopter visibility reduction below 1 SM NA.

MISSED APPROACH: Climb to 3000 direct EWETA and hold.

NVD AWOS-3PT 119.175	SPRINGFIELD APP CON 124.95	CTAF 122.9
--------------------------------	--------------------------------------	----------------------



ELEV 1042	TDZE 1037
-----------	-----------



CATEGORY	A	B	C	D
LP MDA	1460-1	423 (500-1)	NA	
LNAV MDA	1480-1	443 (500-1)	NA	
CIRCLING	1560-1 518 (600-1)	1700-1 658 (700-1)	NA	

NC-3, 22 FEB 2024 to 21 MAR 2024

NC-3, 22 FEB 2024 to 21 MAR 2024

VORTAC SGF 116.9 Chan 116	APP CRS 305°	Rwy Idg TDZE Apt Elev N/A N/A 1042
---	------------------------	--

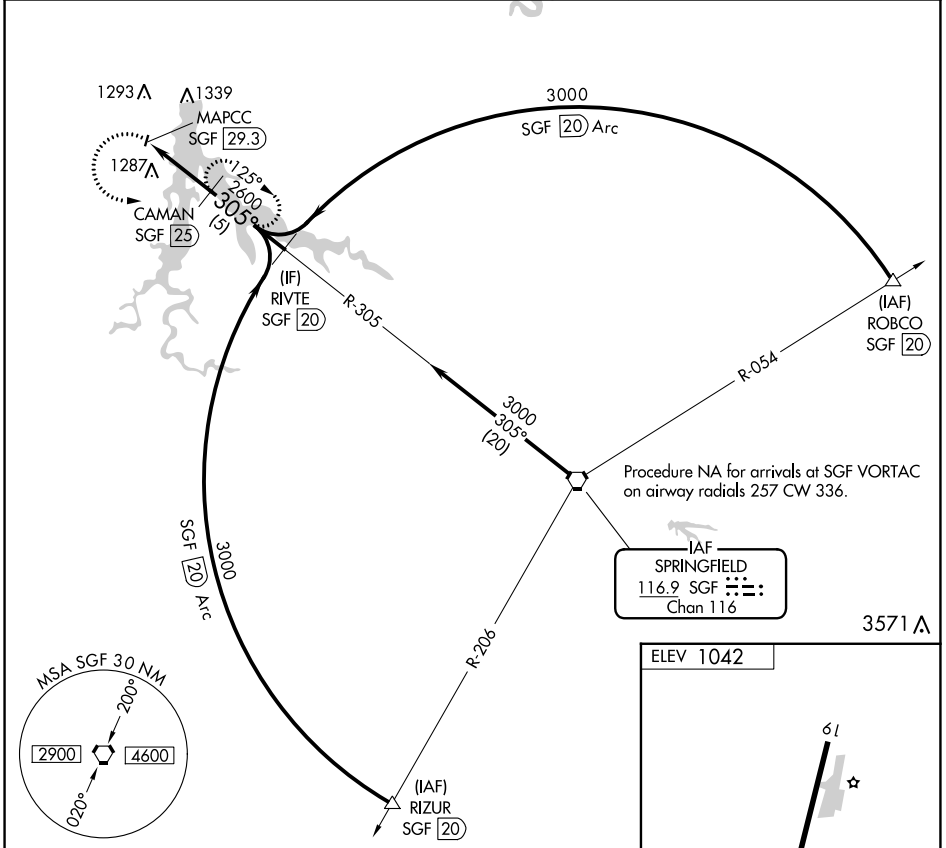
VOR/DME-A

STOCKTON MUNI (MO3)

NA Use Nevada altimeter setting; when not received, use Springfield altimeter setting and increase all MDA 20 feet. Procedure NA at night. Helicopter visibility reduction below 1 SM NA.

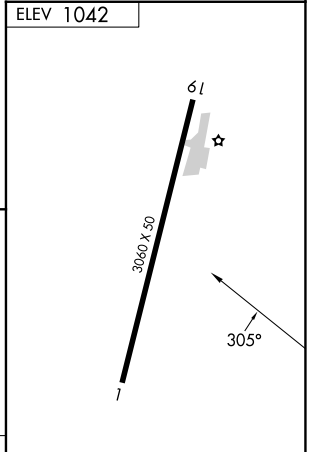
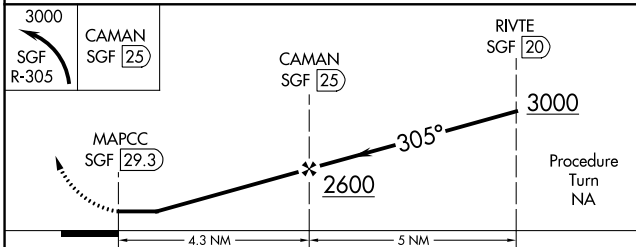
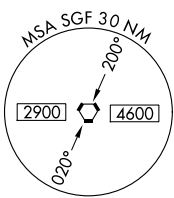
MISSED APPROACH: Climbing left turn to 3000 on SGF VORTAC R-305 to CAMAN/25 DME and hold.

NVD AWOS-3PT 119.175	SPRINGFIELD APP CON 124.95	CTAF 122.9
--------------------------------	--------------------------------------	----------------------



NC-3, 22 FEB 2024 to 21 MAR 2024

NC-3, 22 FEB 2024 to 21 MAR 2024



CATEGORY	A	B	C	D
CIRCLING	1620-1 578 (600-1)	1700-1¼ 658 (700-1¼)	NA	

LIRL Rwy 1-19