

LOC/DME I-PXY <b>111.5</b> Chan <b>52</b>	APP CRS <b>256°</b>	Rwy ldg <b>7867</b> TDZE <b>683</b> Apt Elev <b>729</b>
---	------------------------	---

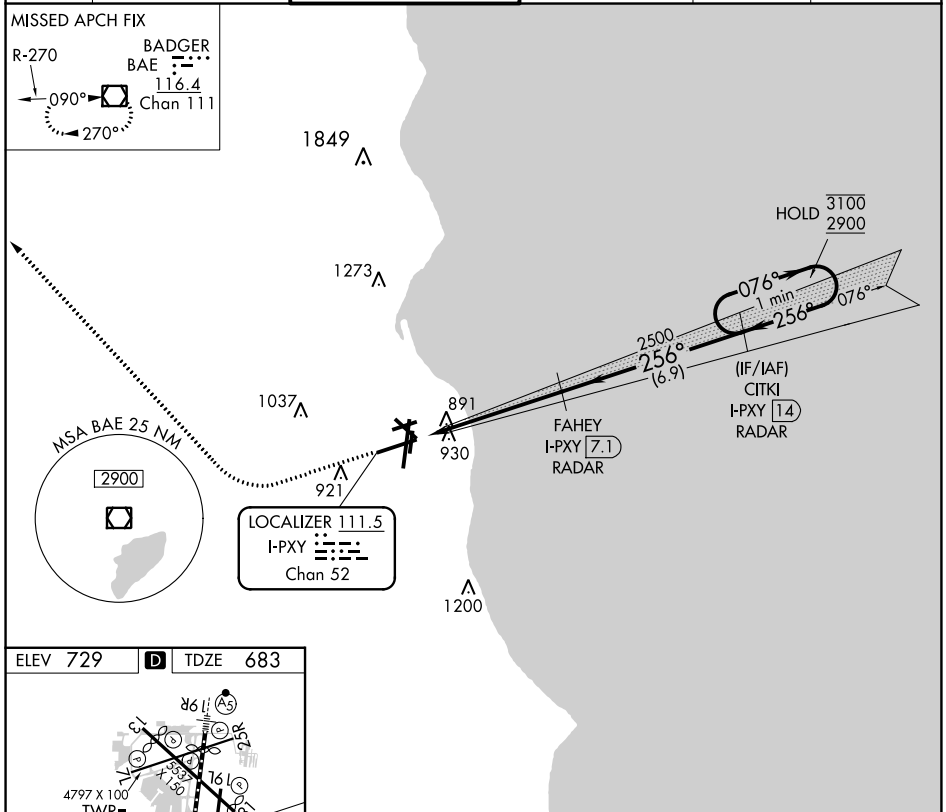
# LOC RWY 25L

GENERAL MITCHELL INTL (MKE)

RADAR required for procedure entry. DME or RADAR required.  
 ▼ Rwy 25L helicopter visibility reduction below 3/4 SM NA.

MISSED APPROACH: Climb to 2800 then right turn direct BAE VOR/DME and hold.

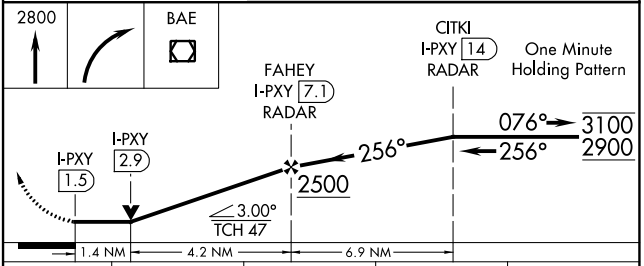
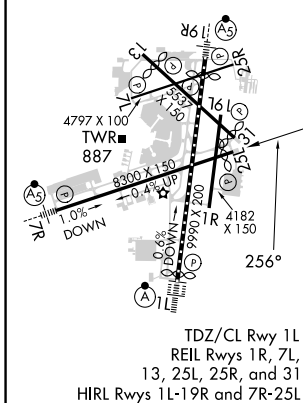
D-ATIS <b>126.4</b>	MILWAUKEE APP CON <b>126.5 307.0</b>	MILWAUKEE TOWER <b>124.575 269.05</b>	GND CON <b>121.8 263.125</b>	CLNC DEL <b>120.8</b>	CPDLC
------------------------	---	--	---------------------------------	--------------------------	-------



EC-3, 22 FEB 2024 to 21 MAR 2024

EC-3, 22 FEB 2024 to 21 MAR 2024

ELEV <b>729</b>	<b>D</b>	TDZE <b>683</b>
-----------------	----------	-----------------



	FAF to MAP 5.6 NM			
Knots	60	90	120	150
Min:Sec	5:36	3:44	2:48	2:14
	1:52			
CATEGORY	A	B	C	D
S-LOC 25L	1160-1	477 (500-1)	1160-1 3/8	477 (500-1 3/8)
<input checked="" type="checkbox"/> CIRCLING	1240-1	511 (600-1)	1240-1 1/2	1360-2
			511 (600-1 1/2)	631 (700-2)