

DVALL THREE ARRIVAL

MIAMI APP CON
 120.5 350.225
 FLL D-ATIS
 135.0
 FXE ATIS
 119.85
 KHST ATIS ★
 132.275 269.9
 MIA D-ATIS
 119.15
 OPF ATIS
 125.9
 PMP ATIS
 120.55
 TMB ATIS
 124.0

WEVER
 N25° 33.14' - W80° 54.82'
**TURBOJET VERTICAL NAVIGATION
 PLANNING INFORMATION**

Miami Intl landing East: Expect clearance
 to cross at 10000' and 250K.
 Miami Intl landing West: Expect clearance
 to cross at 14000' and 250K.

LA BELLE
 110.4 LBV
 Chan 41

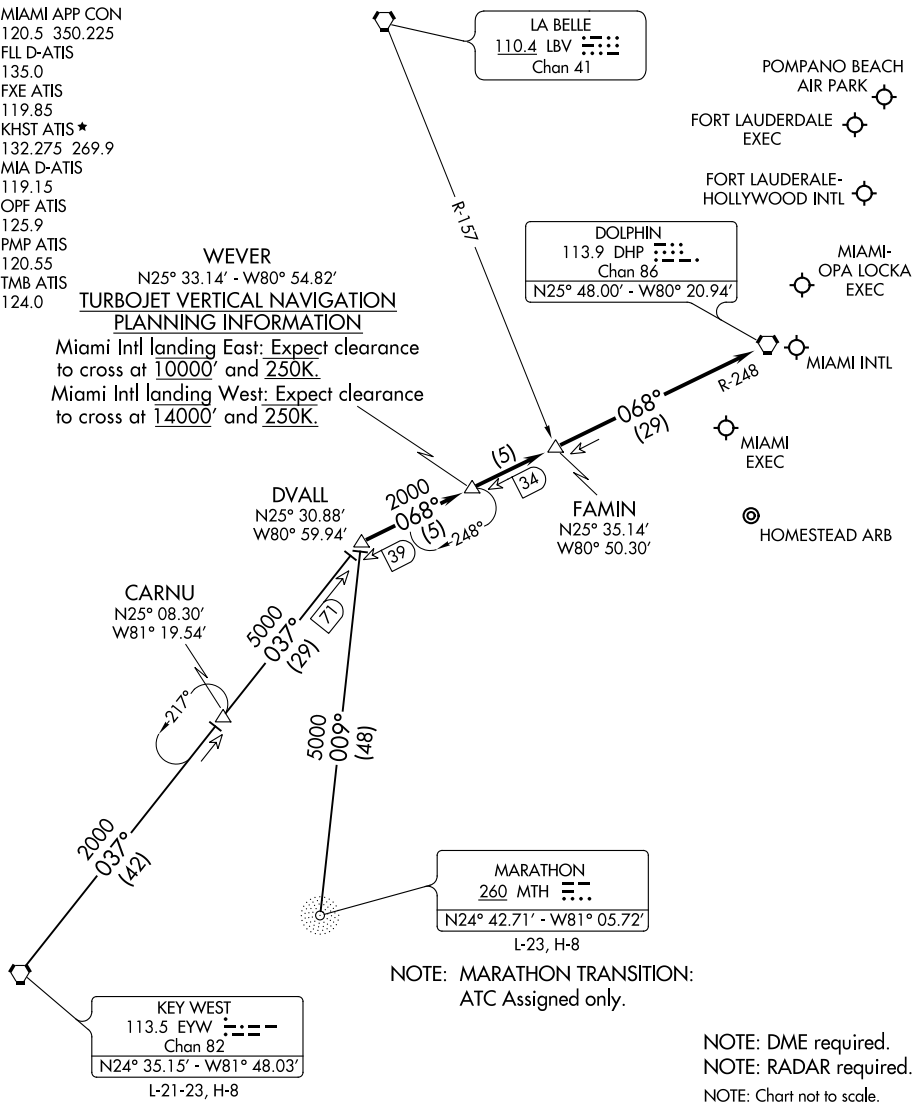
POMPANO BEACH AIR PARK
 FORT LAUDERDALE EXEC
 FORT LAUDERDALE-HOLLYWOOD INTL
 MIAMI-OPA LOCKA EXEC

DOLPHIN
 113.9 DHP
 Chan 86
 N25° 48.00' - W80° 20.94'

FAMIN
 N25° 35.14' - W80° 50.30'

MARATHON
 260 MTH
 L-23, H-8
 N24° 42.71' - W81° 05.72'

KEY WEST
 113.5 EYW
 Chan 82
 N24° 35.15' - W81° 48.03'
 L-21-23, H-8



NOTE: MARATHON TRANSITION:
 ATC Assigned only.

NOTE: DME required.
 NOTE: RADAR required.
 NOTE: Chart not to scale.

KEY WEST TRANSITION (EYW.DVALL3): From over EYW VORTAC on EYW R-037 to DVALL INT. Thence. . . .
MARATHON TRANSITION (MTH.DVALL3): From over MTH NDB on bearing 009° to DVALL INT. Thence. . . .
 . . . From over DVALL INT via DHP R-248 to DHP VORTAC. Expect RADAR vectors to final approach course after FAMIN INT.

SE-3, 22 FEB 2024 to 21 MAR 2024

SE-3, 22 FEB 2024 to 21 MAR 2024

DVALL THREE ARRIVAL