

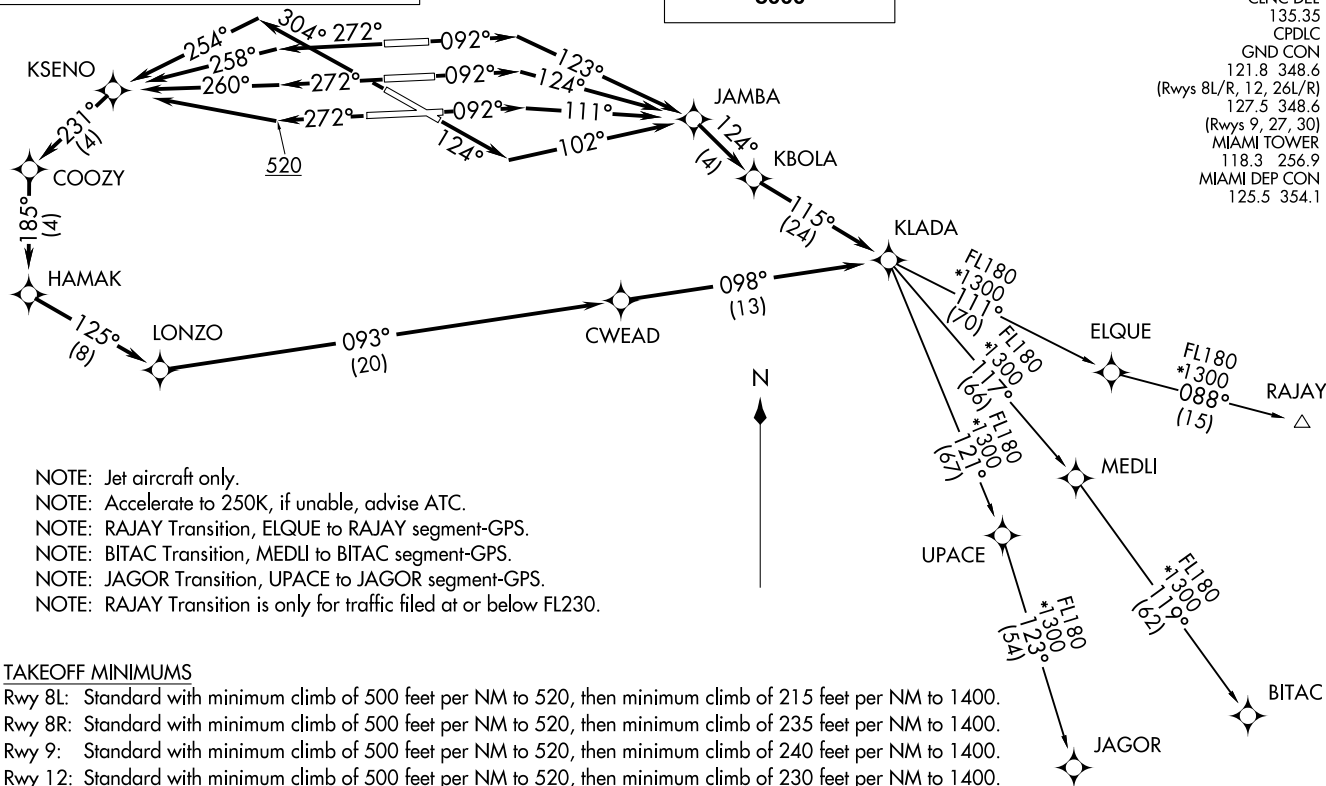
KLADA TWO DEPARTURE (RNAV)
(KLADA2.KLADA) 19MAR22

RNAV 1 - DME/DME/IRU or GPS.

RADAR required for non-GPS equipped aircraft.

**TOP ALTITUDE:
5000**

D-ATIS
133.675
CLNC DEL
135.35
CPDLC
GND CON
121.8 348.6
(Rwys 8L/R, 12, 26L/R)
127.5 348.6
(Rwys 9, 27, 30)
MIAMI TOWER
118.3 256.9
MIAMI DEP CON
125.5 354.1



(NARRATIVE ON FOLLOWING PAGE)

NOTE: Chart not to scale.

(KLADA2.KLADA) 22139
KLADA TWO DEPARTURE (RNAV)

AL-257 (FAA)

MIAMI INTL (MTIA)
MIAMI, FLORIDA

MIAMI, FLORIDA
MIAMI INTL (MTIA)



DEPARTURE ROUTE DESCRIPTION
SEE ADDITIONAL REQUIREMENTS ON AAUP

- TAKEOFF RUNWAY 8L: Climb on heading 092° to intercept course 123° to JAMBA, then on track 124° to KBOLA, then on track 115° to KLADA, thence. . . .
- TAKEOFF RUNWAY 8R: Climb on heading 092° to intercept course 124° to JAMBA, then on track 124° to KBOLA, then on track 115° to KLADA, thence. . . .
- TAKEOFF RUNWAY 9: Climb on heading 092° to intercept course 111° to JAMBA, then on track 124° to KBOLA, then on track 115° to KLADA, thence. . . .
- TAKEOFF RUNWAY 12: Climb on heading 124° to intercept course 102° to JAMBA, then on track 124° to KBOLA, then on track 115° to KLADA, thence. . . .
- TAKEOFF RUNWAY 26L: Climb on heading 272° to intercept course 260° to KSENO, then on track 231° to COOZY, then on track 185° to HAMAK, then on track 125° to LONZO, then on track 093° to CWEAD, then on track 098° to KLADA, thence. . . .
- TAKEOFF RUNWAY 26R: Climb on heading 272° to intercept course 258° to KSENO, then on track 231° to COOZY, then on track 185° to HAMAK, then on track 125° to LONZO, then on track 093° to CWEAD, then on track 098° to KLADA, thence. . . .
- TAKEOFF RUNWAY 27: Climb on heading 272° to 520, then direct KSENO, then on track 231° to COOZY, then on track 185° to HAMAK, then on track 125° to LONZO, then on track 093° to CWEAD, then on track 098° to KLADA, thence. . . .
- TAKEOFF RUNWAY 30: Climb on heading 304° to intercept course 254° to KSENO, then on track 231° to COOZY, then on track 185° to HAMAK, then on track 125° to LONZO, then on track 093° to CWEAD, then on track 098° to KLADA, thence. . . .

. . . on assigned transition, maintain 5000, expect filed altitude within 10 minutes after departure.

- BITAC TRANSITION (KLADA2.BITAC)
- JAGOR TRANSITION (KLADA2.JAGOR)
- RAJAY TRANSITION (KLADA2.RAJAY)

SE-3, 22 FEB 2024 to 21 MAR 2024

SE-3, 22 FEB 2024 to 21 MAR 2024