

WAAS CH 63038 W36A	APP CRS 356°	Rwy Idg 5513 TDZE 1304 Apt Elev 1304
--	------------------------	---

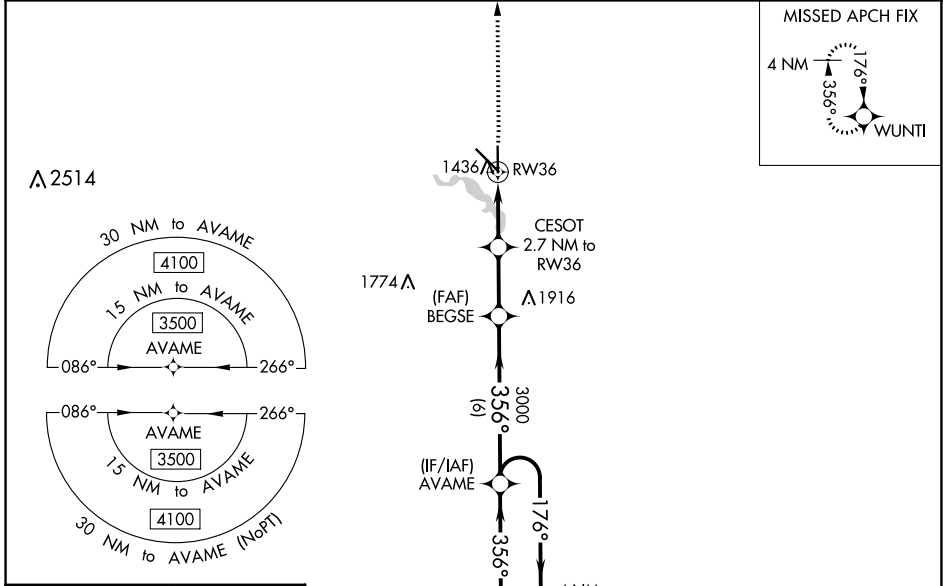
RNAV (GPS) RWY 36

MITCHELL MUNI (MHE)

⚠ For uncompensated Baro-VNAV systems, LNAV/VNAV NA below -21°C (-5°F) or above 54°C (130°F). DME/DME RNP-0.3 NA. When local altimeter setting not received, use Huron Rgnl altimeter setting and increase LPV DA to 1643, and LNAV/VNAV DA to 1697. Increase all MDA 100 feet. Increase LPV visibility, all Cats, to 1½ mile, LNAV/VNAV visibility, all Cats, and LNAV visibility Cats C/D to 3⁄8 mile and increase Circling Cat C visibility to 1⁄8 mile. Baro-VNAV and VDP NA when using Huron Rgnl altimeter setting.

MISSED APPROACH:
Climb to 3500 direct WUNTI and hold.

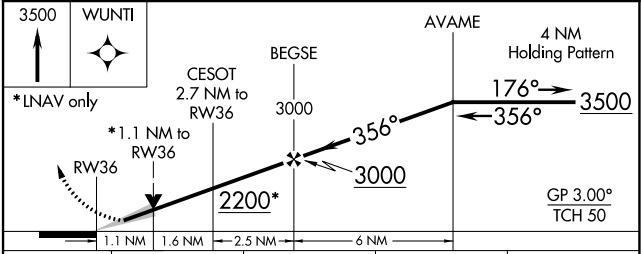
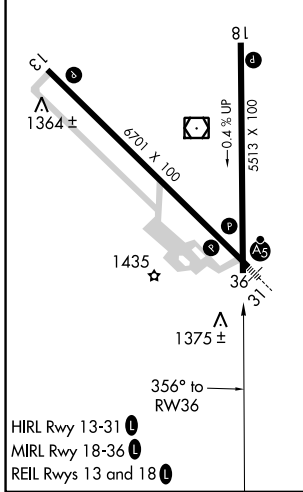
ASOS 124.175	MINNEAPOLIS CENTER 126.25 339.8	UNICOM 122.8 (CTAF) 0
------------------------	---	---------------------------------



NC-1, 22 FEB 2024 to 21 MAR 2024

NC-1, 22 FEB 2024 to 21 MAR 2024

ELEV 1304	TDZE 1304
------------------	------------------



CATEGORY	A	B	C	D
LPV DA		1554-1	250 (300-1)	
LNAV/VNAV DA		1608-1	304 (400-1)	
LNAV MDA	1700-1	396 (400-1)	1700-1½	396 (400-1½)
C CIRCLING	1740-1 436 (500-1)	1760-1 456 (500-1)	1820-1½ 516 (600-1½)	1860-2 556 (600-2)