

CRSON SEVEN DEPARTURE (RNAV)

MEMPHIS, TENNESSEE

D-ATIS
127.75
CLNC DEL

125.2

CPDLC

GND CON

121.0 379.2 (Rwy 9-27)

121.9 379.2 (Rwys 18C-36C, 18L-36R)

121.65 379.2 (Rwy 18R-36L)

MEMPHIS TOWER

118.3 257.8 (Rwy 9-27)

119.7 257.8 (Rwys 18C-36C, 18L-36R)

128.425 257.8 (Rwy 18R-36L)

MEMPHIS DEP CON

124.15 385.45

TOP ALTITUDE:
5000

TAKEOFF MINIMUMS:

Rwy 9, 18L/C/R, 27, 36L/C/R:

Standard with minimum climb of 500' per NM to 860.

NOTE: DME/DME/IRU or GPS required.

NOTE: RNAV 1.

NOTE: Turbojets only.

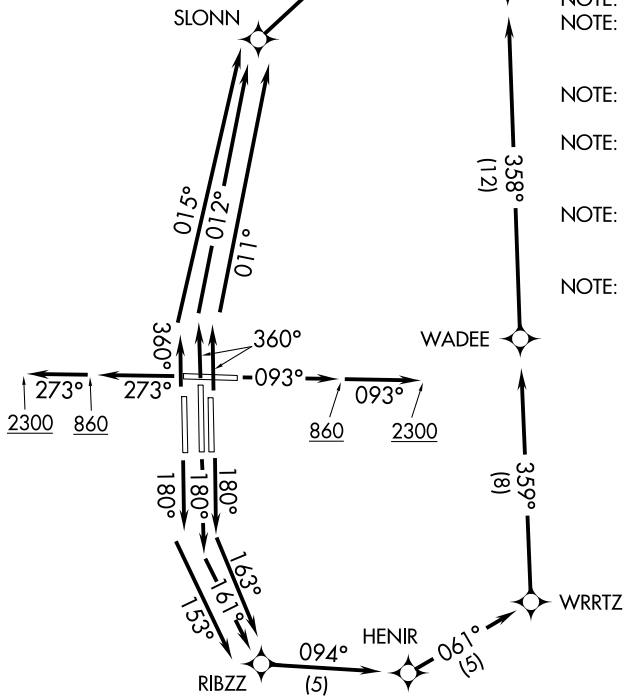
NOTE: Takeoff Rwy 18L/C/R, 36L/C/R -
RADAR required for non-GPS
equipped aircraft.

NOTE: Takeoff Rwy 9, 27 - RADAR required.

NOTE: Transponder code will be issued via PDC or Memphis clearance delivery.

NOTE: Accelerate to 250K, reaching 10000 MSL, maintain 250K or greater, if unable advise ATC.

NOTE: If unable to accept climb rate,
advise ATC on initial contact.



NOTE: Chart not to scale.

(NARRATIVE ON FOLLOWING PAGE)

CRSON SEVEN DEPARTURE (RNAV)

(CRSON7.CRSON) 31DEC20

MEMPHIS, TENNESSEE

MEMPHIS INTL (MEM)

SE-1, 22 FEB 2024 to 21 MAR 2024



DEPARTURE ROUTE DESCRIPTION

TAKEOFF RUNWAY 9: Climb on heading 093° to 860, then continue climb to 2300 on heading 093° or as assigned by ATC, for vectors to LYZZI, then on depicted route to CRSON, thence....

TAKEOFF RUNWAY 18C: Climb on heading 180° to intercept course 161° to RIBZZ, then on depicted route to CRSON, thence....

TAKEOFF RUNWAY 18L: Climb on heading 180° to intercept course 163° to RIBZZ, then on depicted route to CRSON, thence....

TAKEOFF RUNWAY 18R: Climb on heading 180° to intercept course 153° to RIBZZ, then on depicted route to CRSON, thence....

TAKEOFF RUNWAY 27: Climb on heading 273° to 860, then continue climb to 2300 on heading 273° or as assigned by ATC, for vectors to LYZZI, then on depicted route to CRSON, thence....

TAKEOFF RUNWAY 36C: Climb on heading 360° to intercept course 012° to SLONN, then on depicted route to CRSON, thence....

TAKEOFF RUNWAY 36L: Climb on heading 360° to intercept course 015° to SLONN, then on depicted route to CRSON, thence....

TAKEOFF RUNWAY 36R: Climb on heading 360° to intercept course 011° to SLONN, then on depicted route to CRSON, thence....

....maintain 5000. Expect clearance to filed altitude within ten (10) minutes after departure.

HUMMS TRANSITION (CRSON7.HUMMS):

SE-1, 22 FEB 2024 to 21 MAR 2024

SE-1, 22 FEB 2024 to 21 MAR 2024