

MERIDIAN, MISSISSIPPI

HI-TACAN or VOR-B

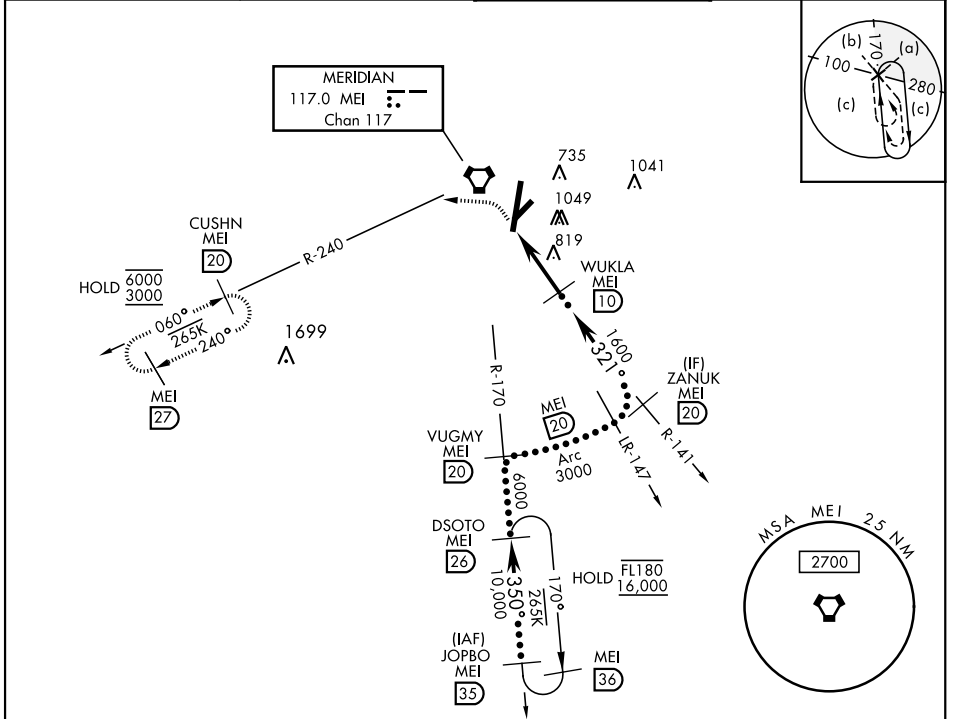
VORTAC MEI 117.0 Chan 117	APCH CRS 321°	Rwy Idg TDZE Arprt Elev N/A 298	AL-254 [USAF]	KEY FLD (KMEI)
---	-------------------------	--	---------------	----------------

DME required.

* Circling to Rwy 22 NA at night. Circling NA SE of Rwy 1 and 22.

MISSED APPROACH: Climbing left turn to 3000 on heading 270° and MEI VORTAC R-240 to CUSHN/ MEI 20 DME and hold.

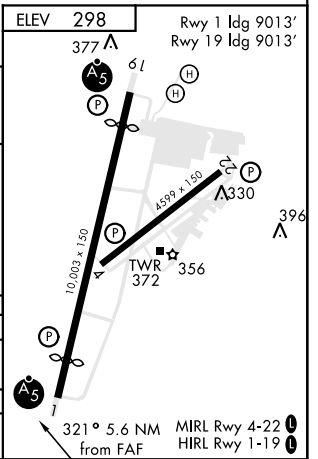
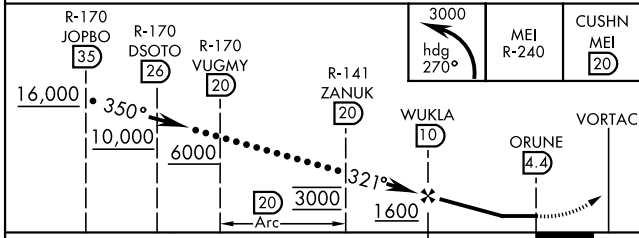
ATIS 126.475 291.675	MERIDIAN APP CON 120.5 269.325	TOWER★ 133.975 (CTAF) 0 257.8	GND CON 121.9 348.6
--------------------------------	--	--	-------------------------------



EMERG SAFE ALT 100 NM 3700

ELEV 298
377 A

Rwy 1 Idg 9013'
Rwy 19 Idg 9013'



CATEGORY	C	D	E
CIRCLING*	1140-2½ 842 (900-2½)	1140-2¾ 842 (900-2¾)	1140-3 842 (900-3)
HATTIESBURG-LAUREL RGNL ALTIMETER SETTING			
CIRCLING*	1280-3	982	(1000-3)

MERIDIAN, MISSISSIPPI 32° 20' N-88° 45' W KEY FLD (KMEI)

Amdt 4A 20JUN19

HI-TACAN or VOR-B

SC-4, 22 FEB 2024 to 21 MAR 2024

SC-4, 22 FEB 2024 to 21 MAR 2024