

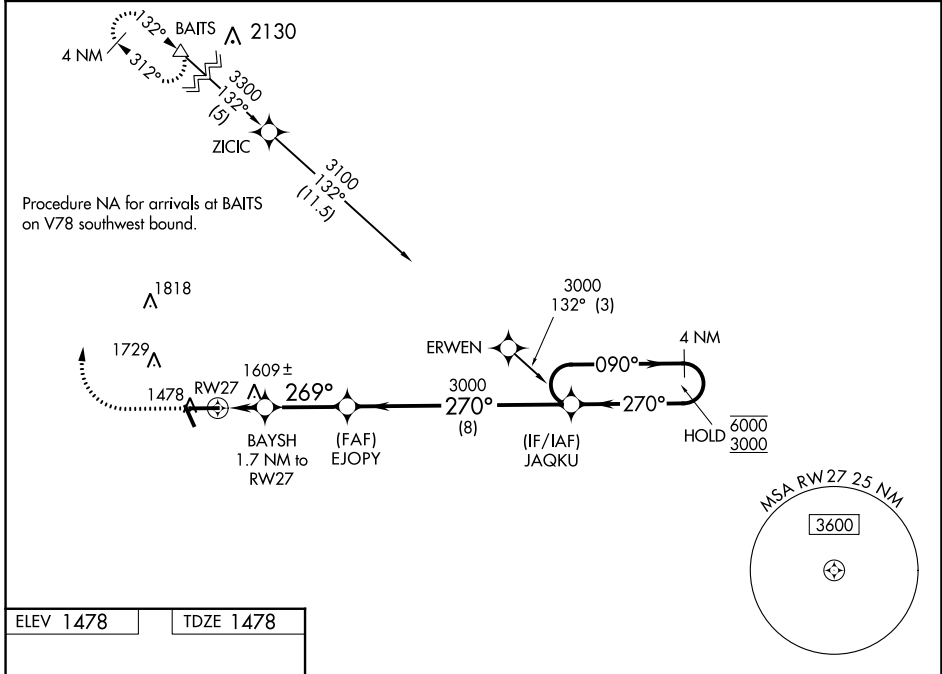
WAAS CH 66011 W27A	APP CRS 269°	Rwy Idg TDZE 1478 Apt Elev 1478	6000
--	------------------------	---	-------------

RNAV (GPS) RWY 27

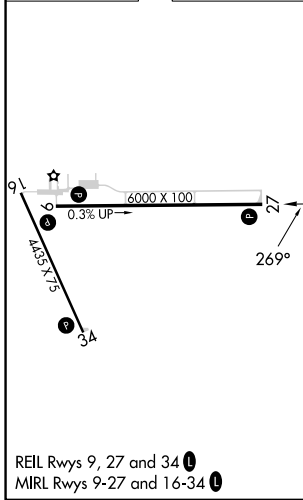
TAYLOR COUNTY (MDZ)

RNP APCH-GPS.	MISSED APPROACH: Climb to 2000 then climbing right turn to 3300 direct BAITS and hold.
⚠ For uncompensated Baro-VNAV systems, LNAV/VNAV NA below -17°C or above 54°C.	

AWOS-3 119.025	MINNEAPOLIS CENTER 124.4 317.7	UNICOM 122.8 (CTAF) 0
--------------------------	--	---------------------------------



ELEV 1478	TDZE 1478
-----------	-----------



	2000	3300	BAITS △	EJOPY 3000	JAQKU	4 NM Holding Pattern
				270°	090°	6000 3000
			BAYSH 1.7 NM to RW27	269°		GP 3.00° TCH 46
			RW27	1.1 NM to RW27	2060	
			1.1 NM	0.7 NM	2.9 NM	8 NM
CATEGORY	A		B		C	
LPV DA			1678-3/4		200 (200-3/4)	
LNAV/VNAV DA			1877-1 1/8		399 (400-1 1/8)	
LNAV MDA	1860-1		382 (400-1)		1860-1 1/8 382 (400-1 1/8)	
CIRCLING	1900-1 422 (500-1)		2040-1 562 (600-1)		2040-1 1/2 562 (600-1 1/2) 2180-2 1/4 702 (800-2 1/4)	

EC-3, 22 FEB 2024 to 21 MAR 2024

EC-3, 22 FEB 2024 to 21 MAR 2024