

LOC I-MDT <b>110.9</b>	APP CRS <b>128°</b>	Rwy Idg <b>8070</b>
		TDZE <b>308</b>
		Apt Elev <b>310</b>

# ILS or LOC RWY 13

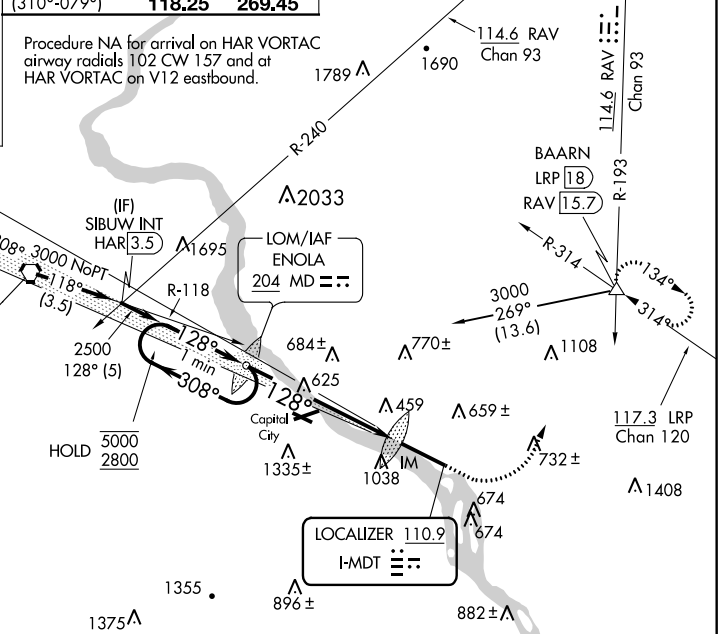
HARRISBURG INTL (MDT)

<p>Circling NA south of Rwy 13-31. -17°C</p>	<p>ALSF-2</p>	<p>MISSED APPROACH: Climb to 900 then climbing left turn to 3000 on heading 060° and RAV VORTAC R-193 to BAARN INT/LRP 18 DME and hold.</p>
--	---------------	---

<p>ATIS <b>118.8</b></p>	<p>HARRISBURG APP CON</p> <table border="1"> <tr> <td>(080°-179°)</td> <td><b>126.45</b></td> <td><b>281.525</b></td> </tr> <tr> <td>(180°-309°)</td> <td><b>124.1</b></td> <td><b>273.525</b></td> </tr> <tr> <td>(310°-079°)</td> <td><b>118.25</b></td> <td><b>269.45</b></td> </tr> </table>	(080°-179°)	<b>126.45</b>	<b>281.525</b>	(180°-309°)	<b>124.1</b>	<b>273.525</b>	(310°-079°)	<b>118.25</b>	<b>269.45</b>	<p>HARRISBURG INTL TOWER <b>124.8 269.35</b></p>	<p>GND CON <b>121.7 348.6</b></p>
(080°-179°)	<b>126.45</b>	<b>281.525</b>										
(180°-309°)	<b>124.1</b>	<b>273.525</b>										
(310°-079°)	<b>118.25</b>	<b>269.45</b>										

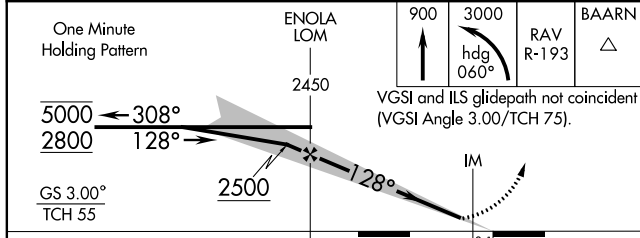
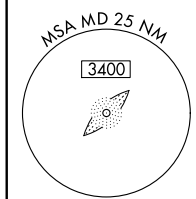
ALTERNATE MISSED APCH FIX

HARRISBURG HAR 115.35  
Chan 100 (Y)

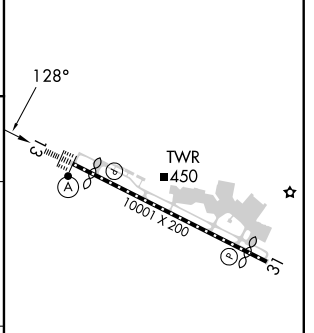


NE-4, 22 FEB 2024 to 21 MAR 2024

NE-4, 22 FEB 2024 to 21 MAR 2024



ELEV 310	<b>D</b>	TDZE 308
----------	----------	----------



CATEGORY	A	B	C	D
S-ILS 13		508/18	200 (200-½)	
S-LOC 13	900/24	592 (600-½)	900-1¼	592 (600-1¼)
CIRCLING	900-1 590 (600-1)	980-1 670 (700-1)	1000-2 690 (700-2)	1440-3 1130 (1200-3)

TDZ/CL Rwy 13				
REIL Rwy 31				
HIRL Rwy 13-31				
FAF to MAP 6.4 NM				
Knots	60	90	120	150
Min:Sec	6:24	4:16	3:12	2:34
			180	2:08