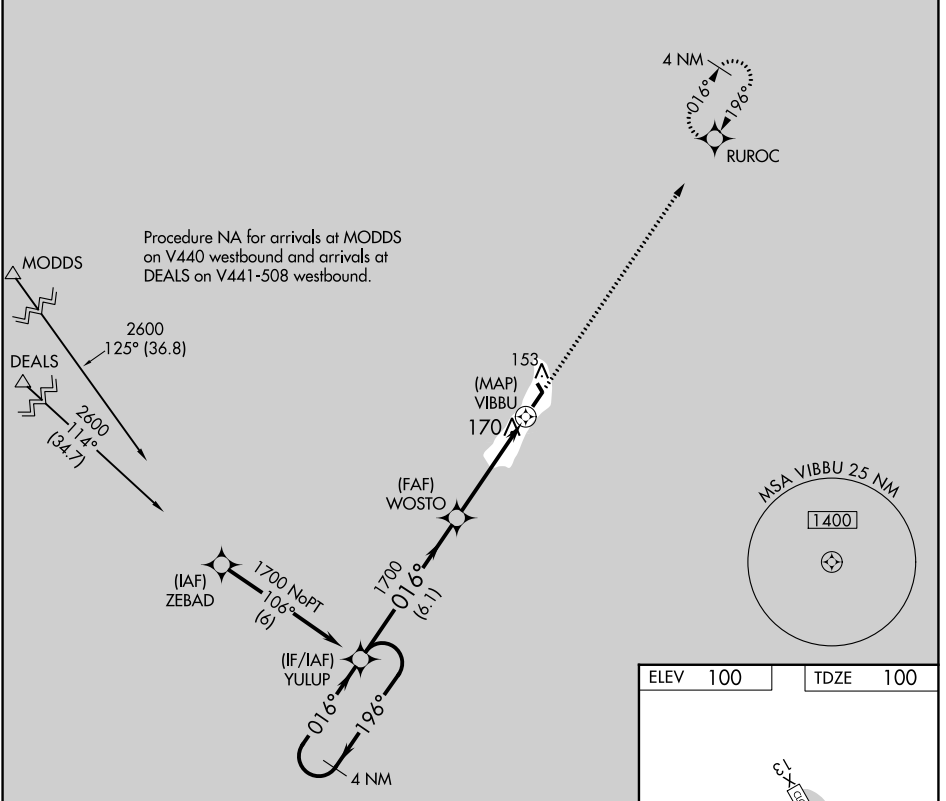


WAAS CH <b>86427</b> <b>W02A</b>	APP CRS <b>016°</b>	Rwy Idg TDZE Apt Elev	<b>3158</b> <b>100</b> <b>100</b>
--	------------------------	-----------------------------	---

**RNAV (GPS) RWY 2**  
MIDDLETON ISLAND (MDO) (P.A.M.D)

<b>▼</b> DME/DME RNP-0.3 NA Procedure NA at night. Helicopter visibility reduction below 1 SM NA.	MISSED APPROACH: Climb to 1700 direct RUROC and hold.
--	---

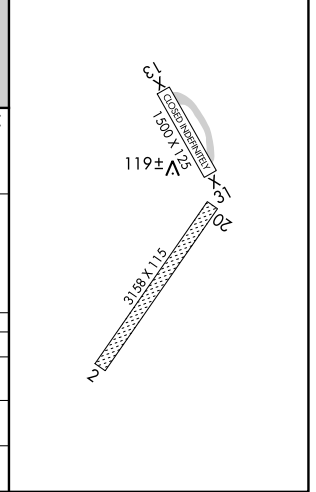
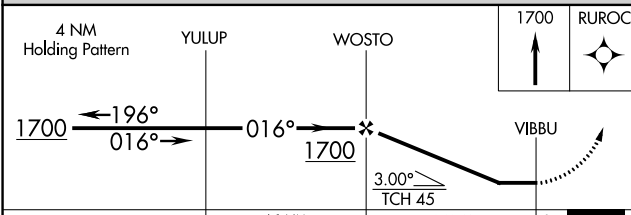
AWOS-3P <b>135.725</b>	ANCHORAGE CENTER <b>133.6 269.4</b>	JUNEAU RADIO <b>122.05</b>	CTAF <b>122.9</b>
---------------------------	--	-------------------------------	----------------------



AK, 25 JAN 2024 to 21 MAR 2024

AK, 25 JAN 2024 to 21 MAR 2024

ELEV 100	TDZE 100
----------	----------



CATEGORY	A	B	C	D
LP MDA	560-1	460 (500-1)	560-1 <sup>3</sup> / <sub>8</sub> 460 (500-1 <sup>3</sup> / <sub>8</sub> )	NA
LNAV MDA	580-1	480 (500-1)	580-1 <sup>3</sup> / <sub>8</sub> 480 (500-1 <sup>3</sup> / <sub>8</sub> )	NA
CIRCLING	600-1	500 (500-1)	600-1 <sup>1</sup> / <sub>2</sub> 500 (500-1 <sup>1</sup> / <sub>2</sub> )	NA