

WAAS CH 56218 W30A	APP CRS 304°	Rwy Idg TDZE Apt Elev	5698 2558 2583
--	------------------------	-----------------------------	---

RNAV (GPS) RWY 30

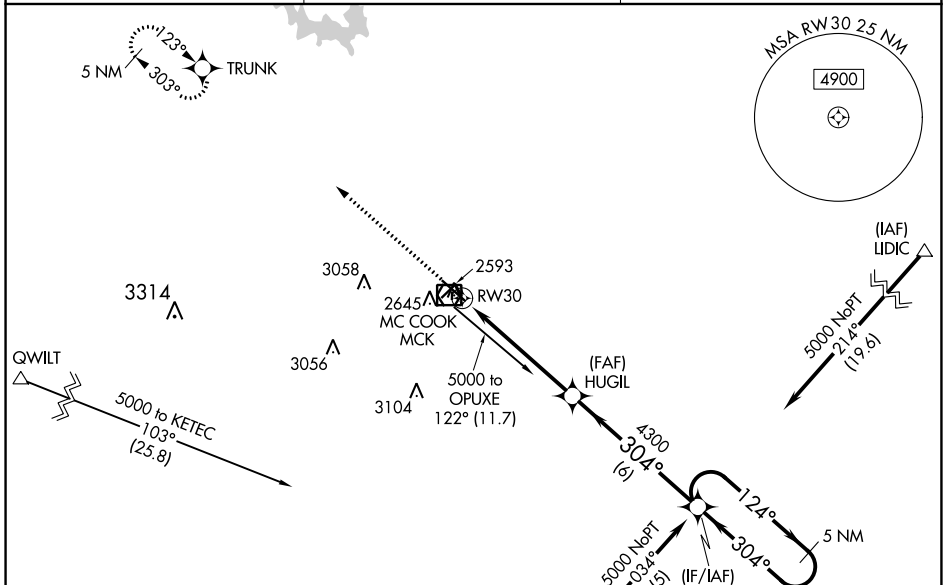
MC COOK BEN NELSON RGNL (MCK)

RNP APCH-GPS.

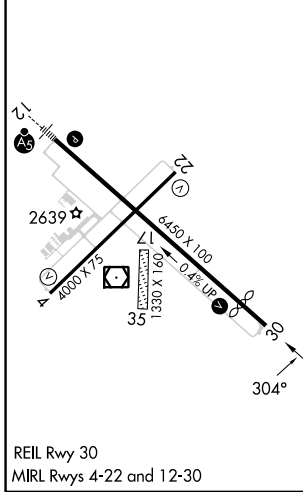
▼ When local altimeter setting not received, use Imperial Muni altimeter setting: increase LPV DA to 3023 feet, and all visibilities 1/2 SM; increase LNAV/VNAV DA to 3079 feet and all visibilities 3/8 SM; increase all MDA's 220 feet and visibility Cat C 3/4 SM. Baro-VNAV and VDP NA when using Imperial Muni altimeter setting. Circling NA to Rwy 17 and 35. For uncompensated Baro-VNAV systems, LNAV/VNAV NA below -20°C or above 54°C.

MISSED APPROACH: Climb to 5000 direct TRUNK and hold.

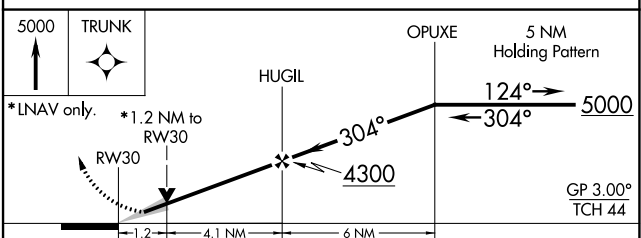
ASOS 119.025	DENVER CENTER 132.7 226.675	UNICOM 122.8 (CTAF)
------------------------	---------------------------------------	-------------------------------



ELEV 2583	D	TDZE 2558
------------------	----------	------------------



MC COOK, NEBRASKA
Orig-D 09SEP21



CATEGORY	A	B	C	D
LPV DA	2810-7/8		252 (300-7/8)	NA
LNAV/VNAV DA	2866-1		308 (300-1)	NA
LNAV MDA	2960-1		402 (400-1)	2960-1 1/8 402 (400-1 1/8)
CIRCLING	3040-1 457 (500-1)	3120-1 537 (600-1)	3360-2 1/4 777 (800-2 1/4)	NA

40°12'N-100°36'W

MC COOK BEN NELSON RGNL (MCK)

RNAV (GPS) RWY 30

NC-2, 22 FEB 2024 to 21 MAR 2024

NC-2, 22 FEB 2024 to 21 MAR 2024