

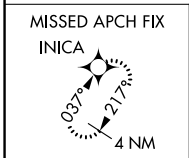
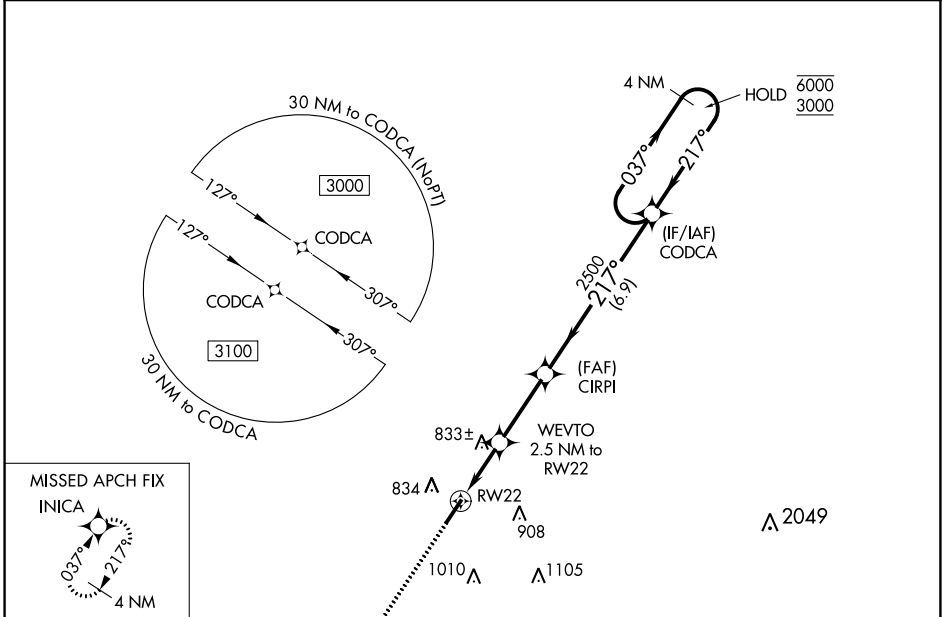
WAAS CH 42926 W22A	APP CRS 217°	Rwy ldg TDZE Apt Elev	5505 706 706
--	------------------------	-----------------------------	---

RNAV (GPS) RWY 22

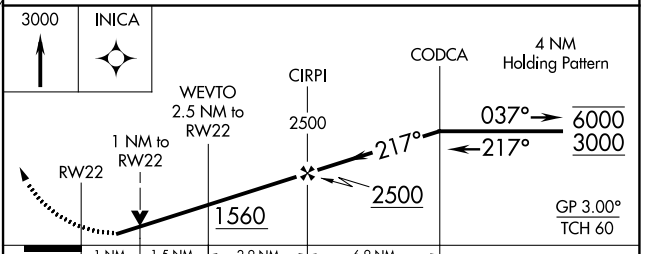
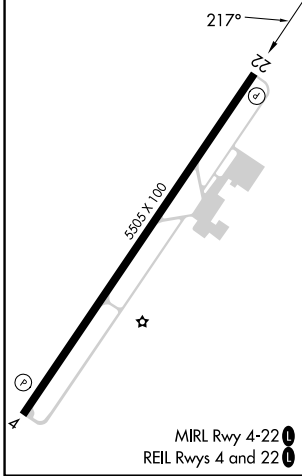
SPRINGFIELD ROBERTSON COUNTY (M91)

RNP APCH - GPS.		MISSED APPROACH: Climb to 3000 direct INICA and hold.
<p>▽ Rwy 22 helicopter visibility reduction below ¾ SM NA. For uncompensated Baro-VNAV systems, ▲ NA LNAV/VNAV NA below -16°C or above 39°C.</p>		

AWOS-3 120.675	NASHVILLE APP CON 119.35 372.0	UNICOM 123.0 (CTAF) 0
--------------------------	--	---------------------------------



ELEV 706	TDZE 706
-----------------	-----------------



CATEGORY	A	B	C	D
LPV DA	975-7/8		269 (300-7/8)	
LNAV/VNAV DA	1010-7/8		304 (400-7/8)	
LNAV MDA	1100-1	394 (400-1)	1100-1 1/8	394 (400-1 1/8)
C CIRCLING	1140-1 434 (500-1)	1160-1 454 (500-1)	1360-1 3/4 654 (700-1 3/4)	1540-2 3/4 834 (900-2 3/4)

SE-1, 22 FEB 2024 to 21 MAR 2024

SE-1, 22 FEB 2024 to 21 MAR 2024