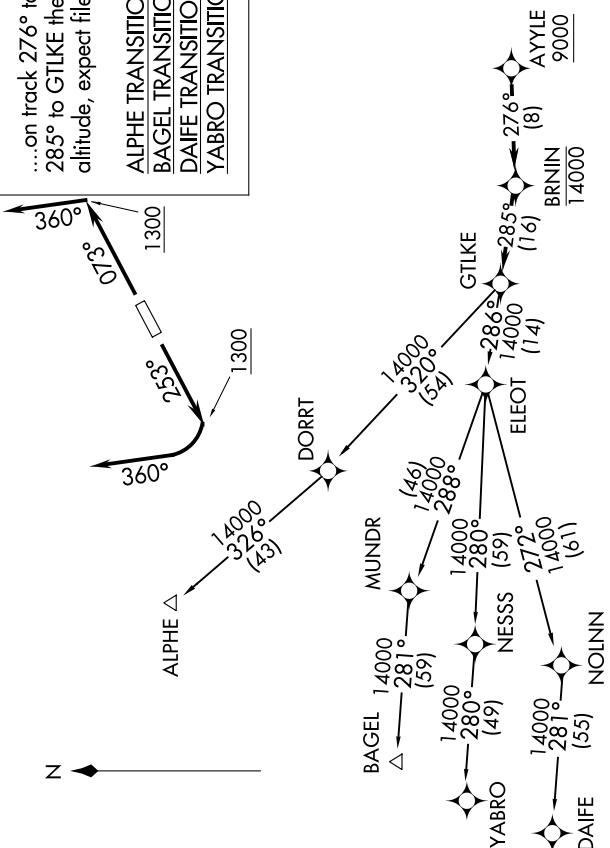


# GTLKE FOUR DEPARTURE (RNAV)

EC-2, 22 FEB 2024 to 21 MAR 2024

### TOP ALTITUDE: ASSIGNED BY ATC

ASOS  
118.925  
CLNC DEL  
125.7  
CTAF  
122.7  
CLEVELAND DEP CON  
125.35 346.325



### DEPARTURE ROUTE DESCRIPTION

**TAKEOFF RUNWAY 7:** Climb on heading 073° to 1300, then on heading 360° or as assigned by ATC for RADAR vectors to cross AYYLE at or above 9000, thence....  
**TAKEOFF RUNWAY 25:** Climb on heading 253° to 1300, then right turn heading 360° or as assigned by ATC for RADAR vectors to cross AYYLE at or above 9000, thence....

....on track 276° to cross BRNNIN at or below 14000, then on track 285° to GTLKE then on (transition). Maintain ATC assigned altitude, expect filed altitude 10 minutes after departure.

- ALPHE TRANSITION (GTLKE4.ALPHE)
- BAGEL TRANSITION (GTLKE4.BAGEL)
- DAIFE TRANSITION (GTLKE4.DAIFE)
- YABRO TRANSITION (GTLKE4.YABRO)

- NOTE: RADAR required.
- NOTE: RNAV 1.
- NOTE: DME/DME/IRU or GPS required.
- NOTE: BAGEL TRANSITION: For aircraft landing MDW only, or as assigned by ATC.
- NOTE: DAIFE TRANSITION: For aircraft landing ORD only, or as assigned by ATC.

### TAKEOFF MINIMUMS:

Rwys 7, 25: Standard with a minimum climb of 500' per NM to 1300.

NOTE: Chart not to scale.

# GTLKE FOUR DEPARTURE (RNAV)

EC-2, 22 FEB 2024 to 21 MAR 2024