

(BLOKR6.BLOKR) 22363

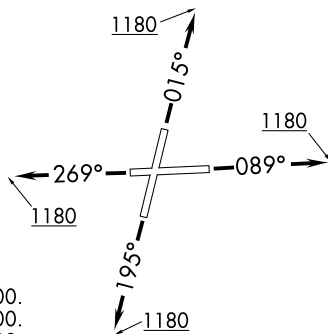
AL-6063 (FAA)

# BLOKR SIX DEPARTURE (RNAV)

LEWIS UNIVERSITY (L.O.T)  
CHICAGO/ROMEOVILLE, ILLINOIS

D-ATIS  
126.675  
GND CON  
120.425  
LEWIS TOWER ★  
134.8 (CTAF)  
CHICAGO DEP CON  
119.35 354.075

**TOP ALTITUDE:  
3000**



### TAKEOFF MINIMUMS:

- Rwy 2: Standard with minimum climb of 420' per NM to 2700.
- Rwy 9: Standard with minimum climb of 310' per NM to 2700.
- Rwy 20: Standard with minimum climb of 370' per NM to 2700.
- Rwy 27: Standard with minimum climb of 340' per NM to 2700.

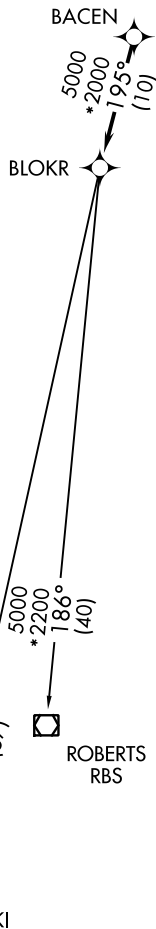
NOTE: RADAR required.

NOTE: DME/DME/IRU or GPS required.

NOTE: RNAV 1.

NOTE: Turbojet departures maintain 250K until advised by ATC.

NOTE: ROBERTS TRANSITION: For aircraft inbound to CML or STL, or as assigned by ATC.



### DEPARTURE ROUTE DESCRIPTION

TAKEOFF RUNWAY 2: Climb heading 015° to 1180, then as assigned by ATC, for vectors to BACEN. . . .

TAKEOFF RUNWAY 9: Climb heading 089° to 1180, then as assigned by ATC, for vectors to BACEN. Thence. . . .

TAKEOFF RUNWAY 20: Climb heading 195° to 1180, then as assigned by ATC, for vectors to BACEN. Thence. . . .

TAKEOFF RUNWAY 27: Climb heading 269° to 1180, then as assigned by ATC, for vectors to BACEN. Thence. . . .

. . . .on track 195° to BLOKR, then on (transition).  
Maintain 3000. Expect filed altitude 10 minutes after departure.

BEKKI TRANSITION (BLOKR6.BEKKI):  
ROBERTS TRANSITION (BLOKR6.RBS):

NOTE: Chart not to scale.

EC-3, 22 FEB 2024 to 21 MAR 2024

EC-3, 22 FEB 2024 to 21 MAR 2024

**BLOKR SIX DEPARTURE (RNAV)**  
(BLOKR6.BLOKR) 10OCT19

CHICAGO/ROMEOVILLE, ILLINOIS  
LEWIS UNIVERSITY (L.O.T)