

|  |                        |                             |   |
|--|------------------------|-----------------------------|---|
| WAAS<br>CH <b>78206</b><br><b>W09A</b> | APP CRS<br><b>090°</b> | Rwy Idg<br>TDZE<br>Apt Elev | <b>5000</b><br><b>717</b><br><b>717</b> |
|--|------------------------|-----------------------------|---|

# RNAV (GPS) RWY 9

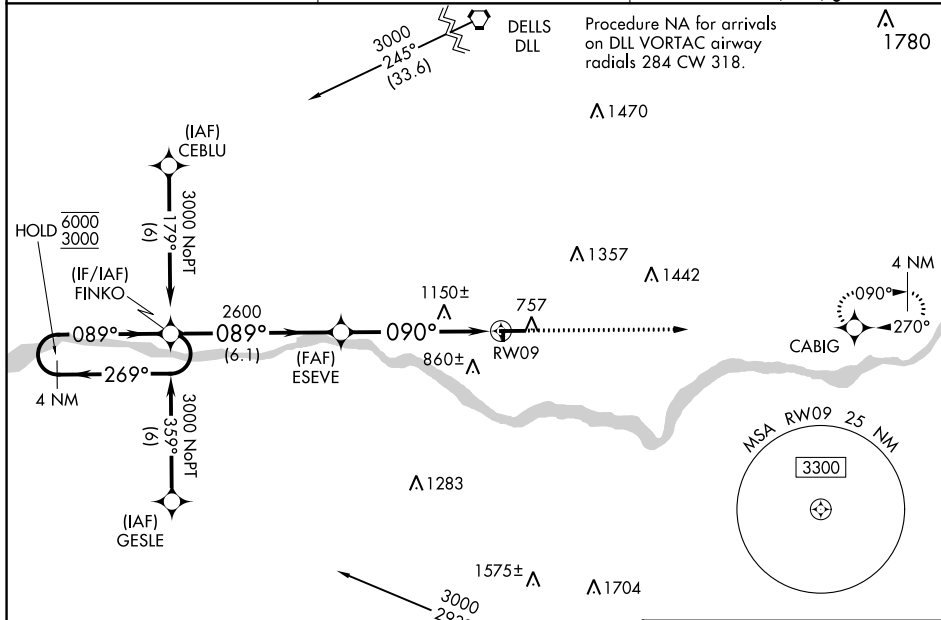
TRI-COUNTY RGNL (LNR)

RNP APCH

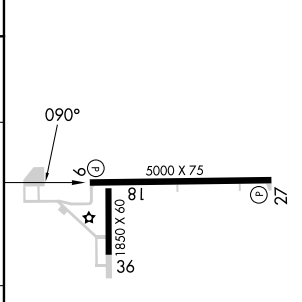
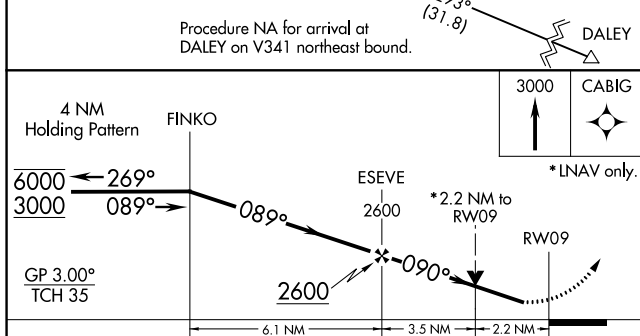
⚠ Circling Rwy 18, 36 NA at night. Baro-VNAV and VDP NA when using Dane County Rgnl-Truax Fld altimeter setting. Rwy 9 helicopter visibility reduction below 3/4 SM NA. For uncompensated Baro-VNAV systems, LNAV/VNAV NA below -22°C or above 54°C. When local altimeter setting not received, use Dane County Rgnl-Truax Fld altimeter setting and increase LPV DA to 1104, LNAV/VNAV DA to 1769, and all MDA 120 feet. Increase LPV visibility all Cats 1/8 SM, LNAV visibility Cat C and Circling visibility Cat A 1/4 SM, Circling visibility Cat C 1/2 SM.

MISSED APPROACH:  
Climb to 3000 direct CABIG and hold.

|                        |  |  |
|------------------------|--|--|
| ASOS<br><b>119.425</b> | MADISON APP CON *<br><b>135.45 343.7</b> | UNICOM<br><b>123.0</b> (CTAF) <b>1</b> |
|------------------------|--|--|



|          |          |
|----------|----------|
| ELEV 717 | TDZE 717 |
|----------|----------|



| CATEGORY     | A                     | B                             | C                             | D  |
|--------------|-----------------------|-------------------------------|-------------------------------|----|
| LPV DA       | 994-1                 | 277 (300-1)                   |                               | NA |
| LNAV/VNAV DA | 1659-4                | 942 (1000-4)                  |                               | NA |
| LNAV MDA     | 1460-1<br>743 (800-1) | 1460-1 1/4<br>743 (800-1 1/4) | 1460-2 1/4<br>743 (800-2 1/4) | NA |
| CIRCLING     | 1520-1<br>803 (900-1) | 1520-1 1/4<br>803 (900-1 1/4) | 1560-2 1/2<br>843 (900-2 1/2) | NA |

REIL Rwy 9 and 27 **1**

MRL Rwy 9-27 and 18-36 **1**

EC-3, 22 FEB 2024 to 21 MAR 2024

EC-3, 22 FEB 2024 to 21 MAR 2024