

VORTAC LMT 115.9 Chan 106	APP CRS 134°	Rwy ldg 10302 TDZE 4091 Apt Elev 4095
---	------------------------	--

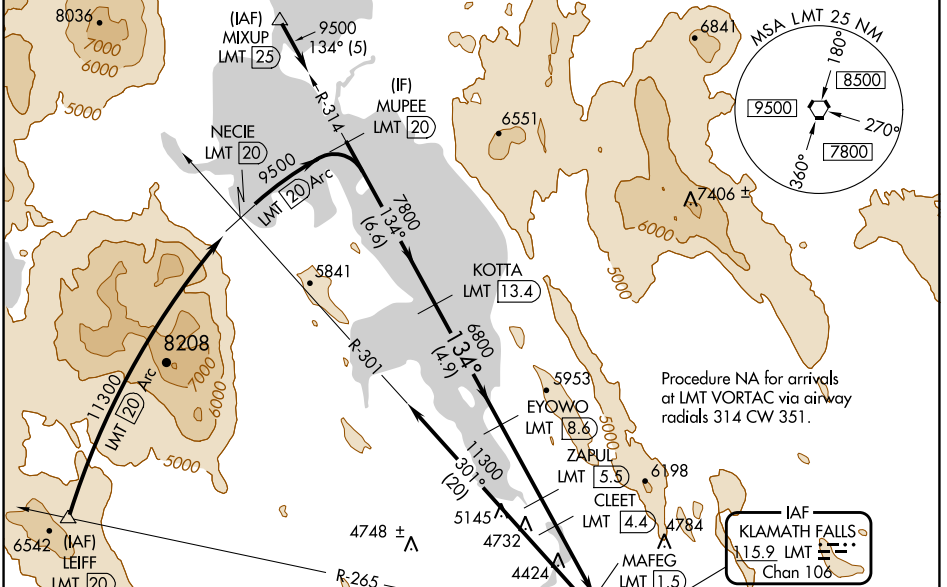
VOR/DME or TACAN RWY 14

CRATER LAKE/KLAMATH RGNL (LMT)

⚠ Circling NA for Cat D and E east of Rwy 14-32. Inop table does not apply to Cats B and C. Helicopter visibility reduction below ¼ SM NA.

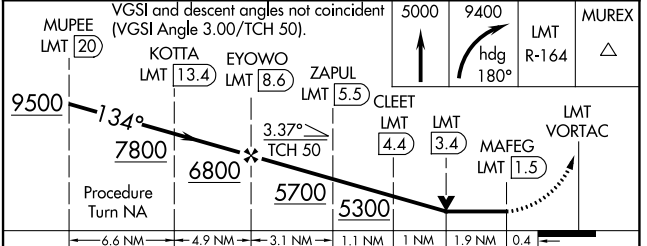
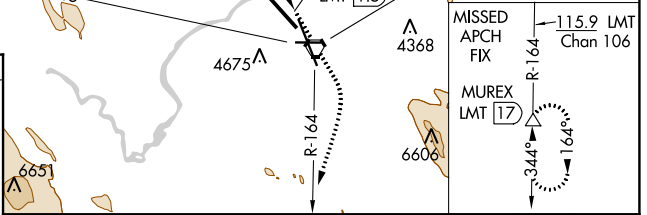
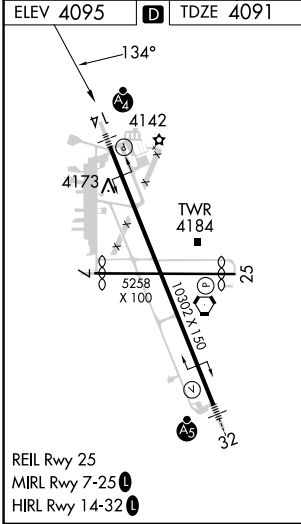
MALSF MISSED APPROACH: Climb to 5000 then climbing right turn to 9400 via heading 180° and LMT VORTAC R-164 to MUREX/LMT 17 DME and hold, continue climb-in-hold to 9400.

ATIS 126.5 263.0	KINGSLEY APP CON 123.675 270.8	KINGSLEY TOWER* 133.975 (CTAF) 0 257.8	GND CON 121.9 348.6	UNICOM 122.95
----------------------------	--	--	-------------------------------	-------------------------



Procedure NA for arrivals at LMT VORTAC via airway radials 314 CW 351.

ELEV 4095	D	TDZE 4091
------------------	----------	------------------



CATEGORY	A	B	C	D	E
S-14	4860-¾ 769 (800-¾)	4860-1¼ 769 (800-1¼)	4860-2¼ 769 (800-2¼)	4860-2½ 769 (800-2½)	4860-2¾ 769 (800-2¾)
C CIRCLING	4880-1 785 (800-1)	4980-1¼ 885 (900-1¼)	5420-3 1325 (1400-3)	5660-3 1565 (1600-3)	5700-3 1605 (1700-3)

NW-1, 22 FEB 2024 to 21 MAR 2024

NW-1, 22 FEB 2024 to 21 MAR 2024