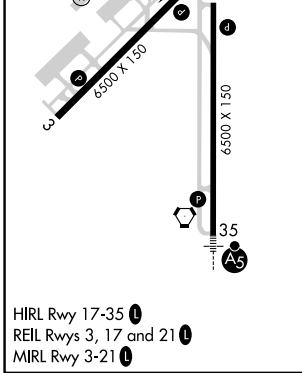
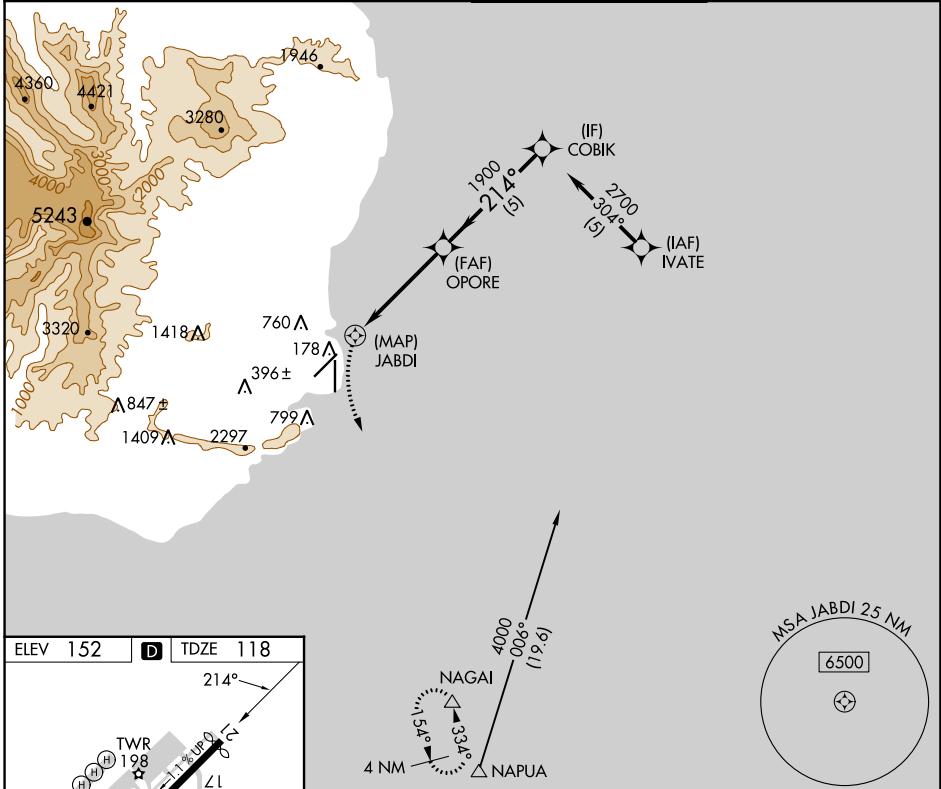


APP CRS	Rwy Idg	6295
214°	TDZE	118
	Apt Elev	152

RNAV (GPS) Y RWY 21

LHUE (LIH)(PHLI)

RNP APCH-GPS.		MISSED APPROACH: Climbing left turn to 3000 direct NAGAL and hold.	
<p>▼ Circling NA at night. Circling NA west of Rwy 17-35. ▲ Rwy 21 helicopter visibility reduction below 3/4 SM NA.</p>			
ATIS	HCF CENTER	LHUE TOWER ★	GND CON
127.2	126.5 269.4	118.9(CTAF) 0 263.1	121.9



ELEV 152	TDZE 118		
<p>3000 NAGAL VGSI and descent angles not coincident (VGSI Angle 3.00/TCH 45).</p>			
<p>1.5 NM to JABDI</p>		<p>COBIK</p>	
<p>JABDI</p>		<p>OPORE</p>	
<p>1900</p>		<p>2700</p>	
<p>1 NM</p>		<p>5 NM</p>	
CATEGORY	A	B	C
LNAV MDA	920-1¼	802 (800-1¼)	920-2½ 802 (800-2½)
C CIRCLING	920-1¼	768 (800-1¼)	920-2½ 768 (800-2½)