

WAAS CH <b>50221</b> <b>W23A</b>	APP CRS <b>233°</b>	Rwy Idg TDZE <b>124</b> Apt Elev <b>125</b>	<b>5502</b>
--	------------------------	---	-------------

# RNAV (GPS) RWY 23

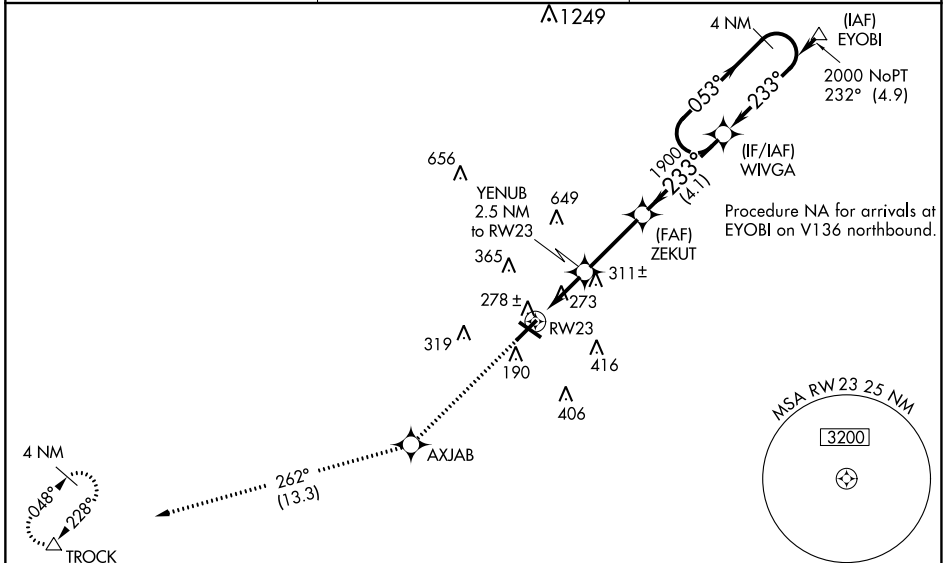
LUMBERTON RGNL (LBT)

RNP APCH - GPS.

**⚠** Rwy 23 helicopter visibility reduction below 3/4 SM NA. When local altimeter setting not received, use Maxton altimeter setting; increase LPV DA to 469 feet and all visibility 1/8 SM; LNAV/VNAV DA to 495 feet and all visibility 1/8 SM; increase all MDAs 60 feet and Circling visibility Cat C 1/4 SM. Baro-VNAV and VDP NA when using Maxton altimeter setting. Circling to Rwy 13 and 31 NA at night. For uncompensated Baro-VNAV systems, LNAV/VNAV NA below -15°C or above 54°C.

**MISSED APPROACH:**  
Climb to 2200 direct AXJAB and on track 262° to TROCK and hold.

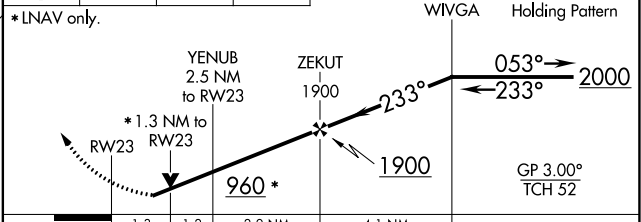
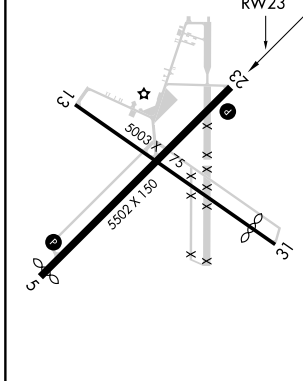
ASOS <b>134.775</b>	FAYETTEVILLE APP CON <b>133.0 290.25</b>	UNICOM <b>122.8 (CTAF) 0</b>
------------------------	---	---------------------------------



SE-2, 22 FEB 2024 to 21 MAR 2024

SE-2, 22 FEB 2024 to 21 MAR 2024

ELEV 125	TDZE 124	2200	AXJAB	TROCK	VGSI and RNAV glidepath not coincident (VGSI Angle 3.20/TCH 45).
		↑	✧	tr 262°	



CATEGORY	A	B	C	D
LPV DA		413-7/8 289 (300-7/8)		NA
LNAV/VNAV DA		439-7/8 315 (400-7/8)		NA
LNAV MDA	580-1	456 (500-1)	580-1 3/8 456 (500-1 3/8)	NA
CIRCLING	660-1	535 (600-1)	720-1 1/2 595 (600-1 1/2)	NA

MIRL Rwy 5-23 0  
REIL Rwy 5 and 23 0