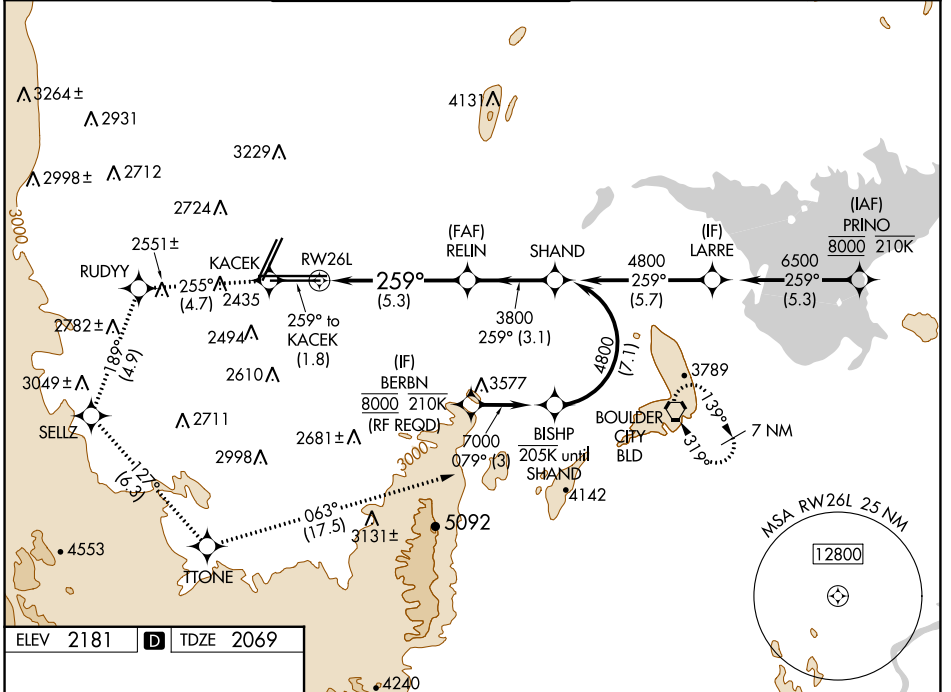


APP CRS	Rwy Idg	10526
259°	TDZE	2069
	Apt Elev	2181

RNAV (RNP) RWY 26L

HARRY REID INTL (LAS)

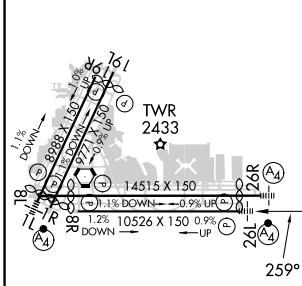
RNP AR APCH.		MALSF	MISSED APPROACH: Climb to 7000 on the RNAV missed approach route to BLD VORTAC and hold. *Missed approach requires minimum climb of 255 feet per NM to 3200.		
For uncompensated Baro-VNAV systems, procedure NA below 0°C or above 54°C.					
D-ATIS	LAS VEGAS APP CON	LAS VEGAS TOWER		GND CON	CLNC DEL
132.4	125.025 379.15 (West) 119.775 282.2 (East)	118.75 257.8 (Rwy 1L/19R, 1R/19L) 119.9 257.8 (Rwy 8L/26R, 8R/26L)		121.1 270.8 E of 1R/19L 121.9 254.3 W of 1R/19L	118.0 CPDLC



SW-4, 22 FEB 2024 to 21 MAR 2024

SW-4, 22 FEB 2024 to 21 MAR 2024

ELEV	2181	D	TDZE	2069
------	-------------	----------	------	-------------



7000	KACEK	RUDYY	SELLZ	TTONE	BLD
↑	◆	◆	◆	◆	◆
tr 259°	tr 255°	tr 189°	tr 127°	tr 063°	
VGSI and RNAV glidepath not coincident (VGSI Angle 3.00/TCH 84).					
See planview for multiple IF locations.					
	RELIN	SHAND			
	3800	4800			
	259°				
	3800				
	5.3 NM		3.1 NM		
RW26L	GP 3.00° TCH 60				
CATEGORY	A	B	C	D	
RNP 0.30 DA*	2450-7/8		381 (300-7/8)		
RNP 0.30 DA	2502-1		433 (400-1)		

MIRL Rwy 1R-19L
REIL Rwy 1R, 8R, 19L and 19R
HIRL Rwy 1L-19R, 8L-26R and 8R-26L

AUTHORIZATION REQUIRED