

WAAS CH 99732 W10A	APP CRS 101°	Rwy Idg 8005 TDZE 38 Apt Elev 40
--	------------------------	---

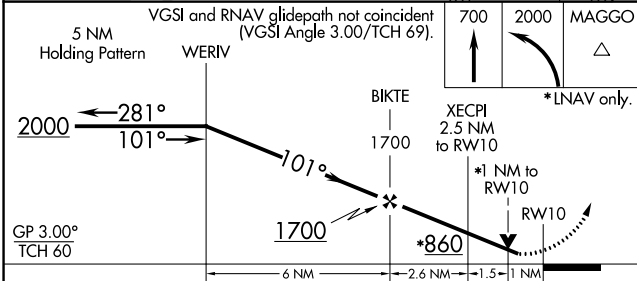
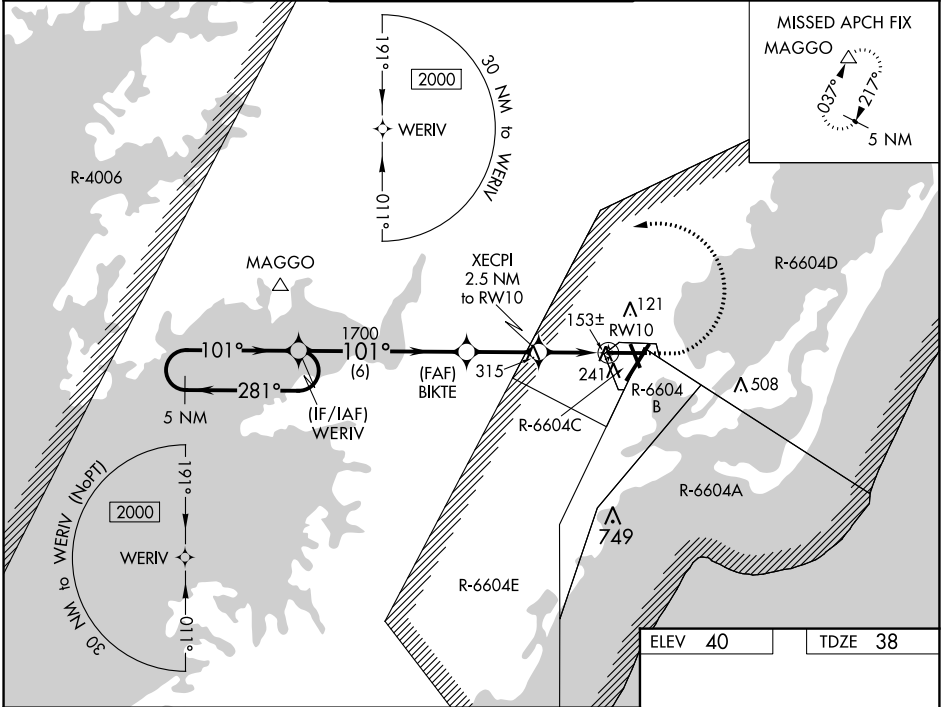
RNAV (GPS) RWY 10

WALLOPS FLIGHT FACILITY (WAL)

⚠ DME/DME RNP -0.3 NA. Rwy 10 helicopter visibility reduction below 3/4 SM NA. When local altimeter setting not received, use Salisbury altimeter setting and increase all DA 60 feet and all visibilities 1/4 SM. Increase all MDA 60 feet and all Cat C and D visibilities 1/4 SM. Baro-VNAV and VDP NA when using Salisbury altimeter setting. For uncompensated Baro-VNAV systems, LNAV/VNAV NA below -11°C (13°F) or above 54°C (130°F).

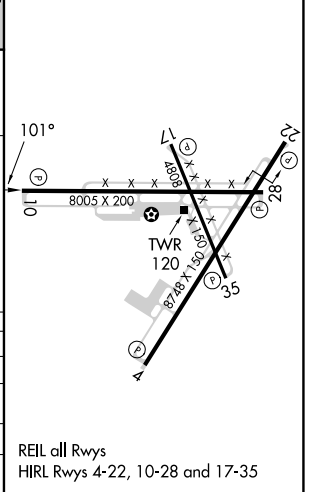
MISSED APPROACH: Climb to 700 then climbing left turn to 2000 direct MAGGO and hold.

ASOS 119.175	PATUXENT APP CON ★ 127.95 314.0	WALLOPS TOWER ★ 126.5 (CTAF) 306.975 (CTAF)	GND CON 127.875 269.325	CLNC DEL 121.7
------------------------	---	---	-----------------------------------	--------------------------



ELEV 40	TDZE 38
---------	---------

CATEGORY	A	B	C	D
LPV DA	330-1	292 (300-1)		
LNAV/VNAV DA	443-1 1/4	405 (500-1 1/4)		
LNAV MDA	420-1 382 (400-1)	420-1 1/8 382 (400-1 1/8)		
CIRCLING	600-1 560 (600-1)	620-1 1/2 580 (600-1 1/2)	860-2 3/4 820 (900-2 3/4)	



NE-3, 22 FEB 2024 to 21 MAR 2024

NE-3, 22 FEB 2024 to 21 MAR 2024

WAAS CH 69632 W17A	APP CRS 169°	Rwy Idg TDZE Apt Elev	4808 39 40
--	------------------------	-----------------------------	---------------------------------------

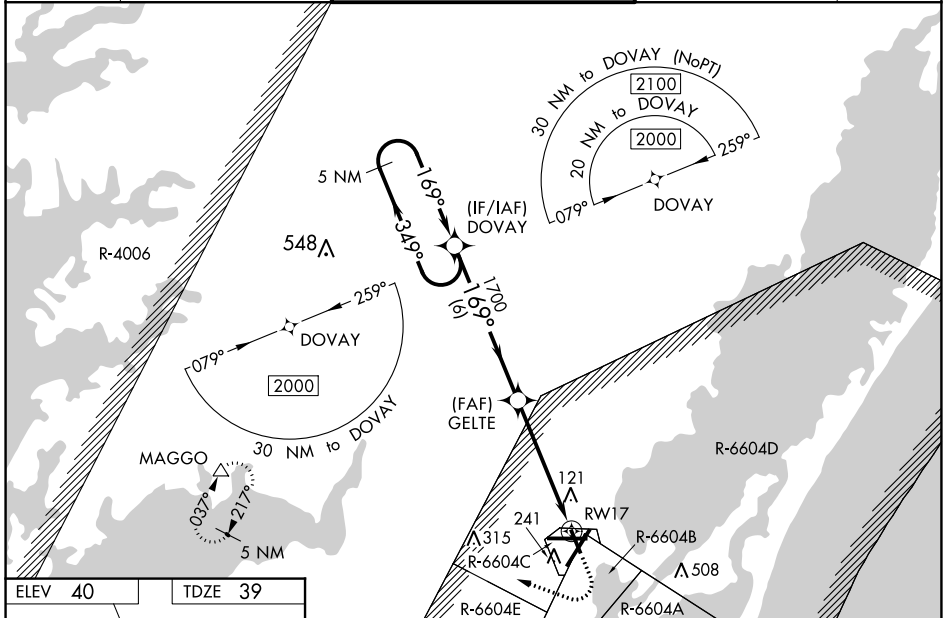
RNAV (GPS) RWY 17

WALLOPS FLIGHT FACILITY (WAL)

⚠ For uncompensated Baro-VNAV systems, LNAV/VNAV NA below -11°C (13°F) or above 54°C (130°F). DME/DME RNP-0.3 NA. Helicopter visibility reduction below 3/4 SM NA. When local altimeter setting not received, use Salisbury altimeter setting; increase LPV DA to 372 and all Cats visibility 1/8 mile, increase LNAV/VNAV DA to 437 and all Cats visibility 1/4 mile, increase all MDA 60 feet and LNAV Cats C/D visibility 1/8 mile and Circling Cat C visibility 1/4 mile. Baro-VNAV and VDP NA when using Salisbury altimeter setting.

MISSED APPROACH: Climb to 600 then climbing right turn to 2000 direct MAGGO and hold.

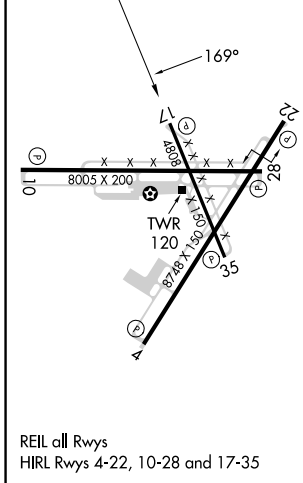
ASOS 119.175	PATUXENT APP CON * 127.95 314.0	WALLOPS TOWER * 126.5 (CTAF) 0 306.975 (CTAF) 0	GND CON 127.875 269.325	CLNC DEL 121.7
------------------------	---	---	-----------------------------------	--------------------------



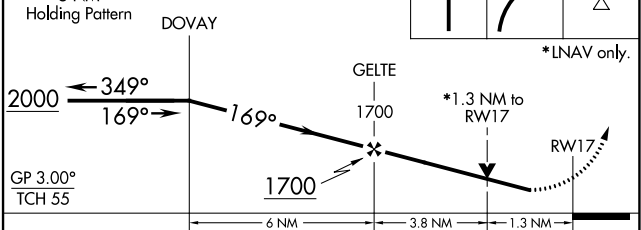
NE-3, 22 FEB 2024 to 21 MAR 2024

NE-3, 22 FEB 2024 to 21 MAR 2024

ELEV 40	TDZE 39
---------	---------



VGSI and RNAV glidepath not coincident (VGSI Angle 3.00/TCH 63).



CATEGORY	A	B	C	D
LPV DA		322-1	283 (300-1)	
LNAV/VNAV DA		387-1 1/8	348 (400-1 1/8)	
LNAV MDA	500-1	461 (500-1)	500-1 3/8	461 (500-1 1/8)
C CIRCLING	600-1	560 (600-1)	620-1 1/2 580 (600-1 1/2)	860-2 3/4 820 (900-2 3/4)

WAAS CH 86234 W22A	APP CRS 223°	Rwy Idg 8748 TDZE 36 Apt Elev 40
---------------------------------	------------------------	---

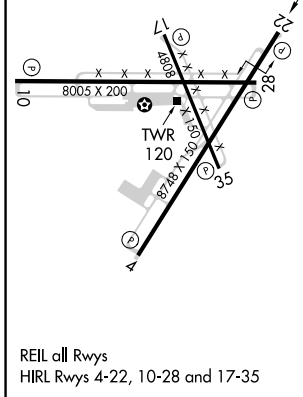
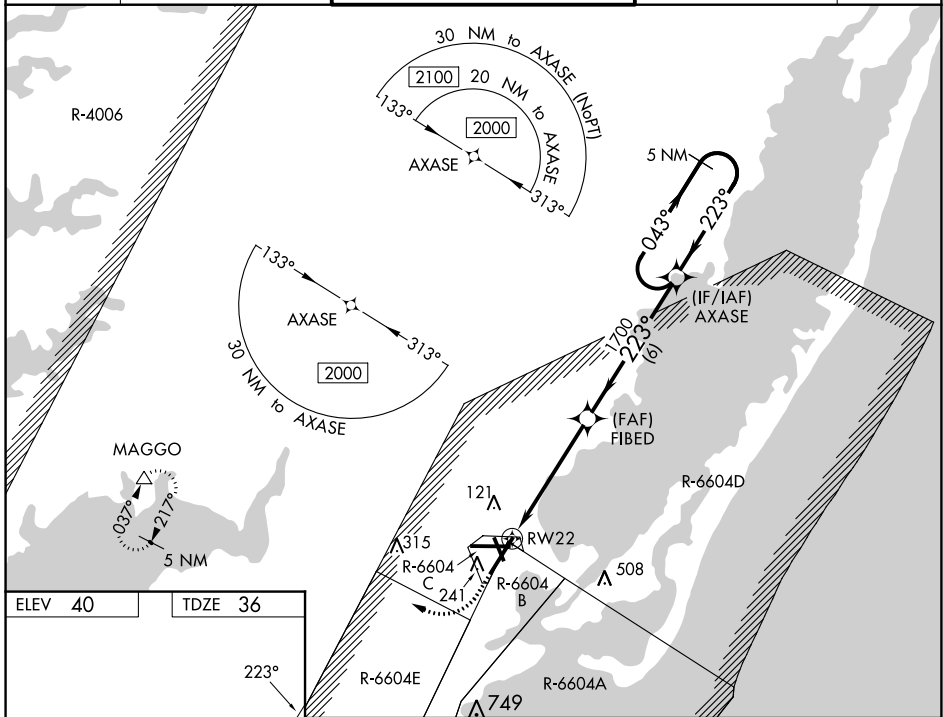
RNAV (GPS) RWY 22

WALLOPS FLIGHT FACILITY (WAL)

⚠ For uncompensated Baro-VNAV systems, LNAV/VNAV NA below -11°C (13°F) or above 54°C (130°F). DME/DME-RNP 0.3 NA. Helicopter visibility reduction below 3/4 SM NA. When local altimeter setting not received, use Salisbury altimeter setting; increase LPV DA to 367 and all Cats visibility 1/4 mile; increase LNAV/VNAV DA to 489 and all Cats visibility 1/8 mile; increase all MDA 60 feet and LNAV Cats C/D visibility 1/8 mile and Circling Cat C visibility 1/4 mile. Baro-VNAV and VDP NA when using Salisbury altimeter setting.

MISSED APPROACH:
Climb to 600 then climbing right turn to 2000 direct MAGGO and hold.

ASOS 119.175	PATUXENT APP CON ★ 127.95 314.0	WALLOPS TOWER ★ 126.5 (CTAF) 0 306.975 (CTAF) 0	GND CON 127.875 269.325	CLNC DEL 121.7
------------------------	---	---	-----------------------------------	--------------------------



ELEV 40	TDZE 36	MAGGO	VGSI and RNAV glidepath not coincident (VGSI Angle 3.00/TCH 60).
600	2000	1700	1700
↑	↻	↻	↻
* LNAV only.	* 1.3 NM to RW22	1700	2000
↻	↻	↻	↻
1.3 NM	3.8 NM	6 NM	5 NM Holding Pattern
			GP 3.00° TCH 50

CATEGORY	A	B	C	D
LPV DA		314-7/8	278 (300-7/8)	
LNAV/VNAV DA		436-1 1/8	400 (400-1 1/8)	
LNAV MDA	500-1	464 (500-1)	500-1 3/8	464 (500-1 3/8)
C CIRCLING	600-1	560 (600-1)	620-1 1/2 580 (600-1 1/2)	860-2 3/4 820 (900-2 3/4)

NE-3, 22 FEB 2024 to 21 MAR 2024

NE-3, 22 FEB 2024 to 21 MAR 2024

WAAS CH 45534 W28A	APP CRS 281°	Rwy Idg TDZE Apt Elev	8005 40 40
--	------------------------	-----------------------------	---------------------------------------

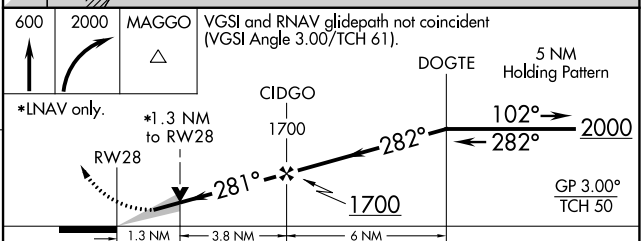
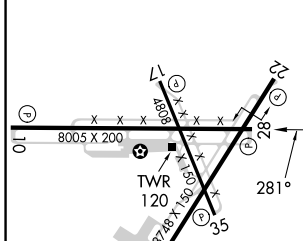
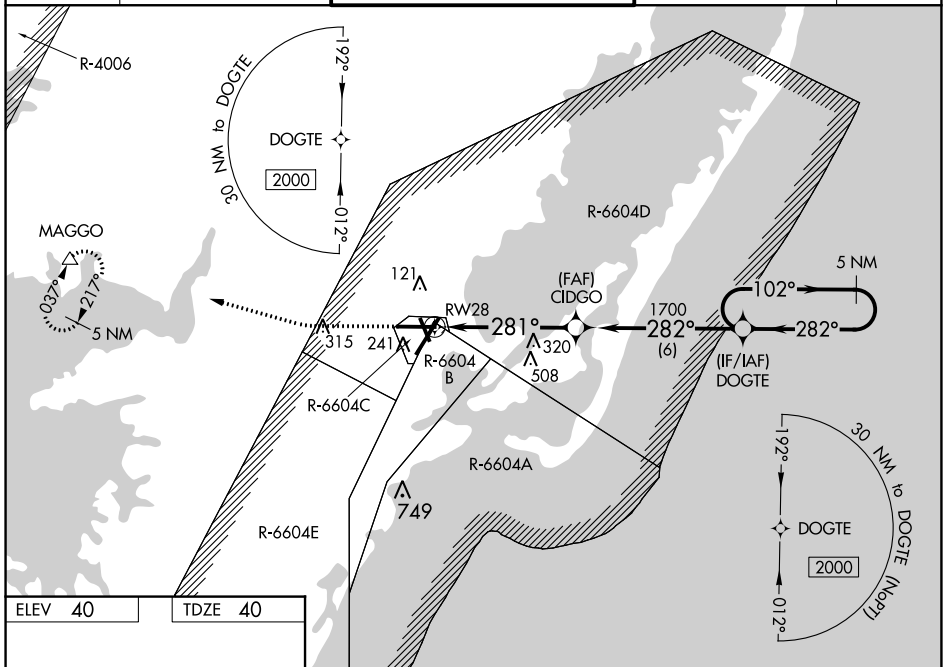
RNAV (GPS) RWY 28

WALLOPS FLIGHT FACILITY (WAL)

▼ For uncompensated Baro-VNAV systems, LNAV/VNAV NA below -11°C (13°F) or above 54°C (130°F). DME/DME RNP-0.3 NA. When local altimeter setting not received, use Salisbury altimeter setting: increase LPV DA to 343 and all Cats visibility ¼ mile; increase LNAV/VNAV DA to 453 and all Cats visibility ¼ mile; increase all MDA 60 feet and LNAV Cats C/D and Circling Cat C visibility ¼ mile. Baro-VNAV and YDP NA when using Salisbury altimeter setting.

▲ MISSED APPROACH: Climb to 600 then climbing right turn to 2000 direct MAGGO and hold.

ASOS 119.175	PATUXENT APP CON ★ 127.95 314.0	WALLOPS TOWER ★ 126.5 (CTAF) 306.975 (CTAF)	GND CON 127.875 269.325	CLNC DEL 121.7
------------------------	---	---	-----------------------------------	--------------------------



CATEGORY	A	B	C	D
LPV DA		290-¾	250 (300-¾)	
LNAV/VNAV DA		400-1½	360 (400-1½)	
LNAV MDA	520-1	480 (500-1)	520-1¾	480 (500-1½)
C CIRCLING	600-1	560 (600-1)	620-1½	860-2¾
			580 (600-1½)	820 (900-2¾)

NE-3, 22 FEB 2024 to 21 MAR 2024

NE-3, 22 FEB 2024 to 21 MAR 2024

WAAS CH 53732 W35A	APP CRS 349°	Rwy Idg TDZE Apt Elev	4808 39 40
--	------------------------	-----------------------------	---------------------------------------

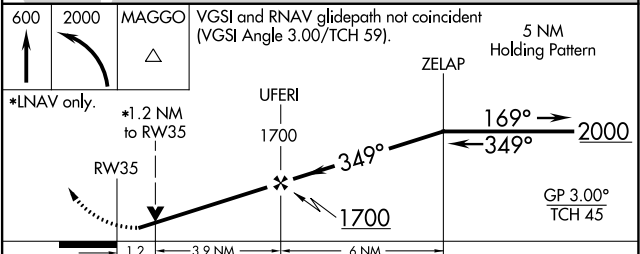
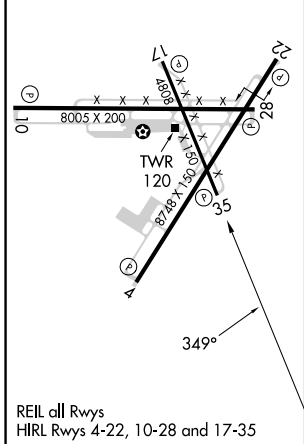
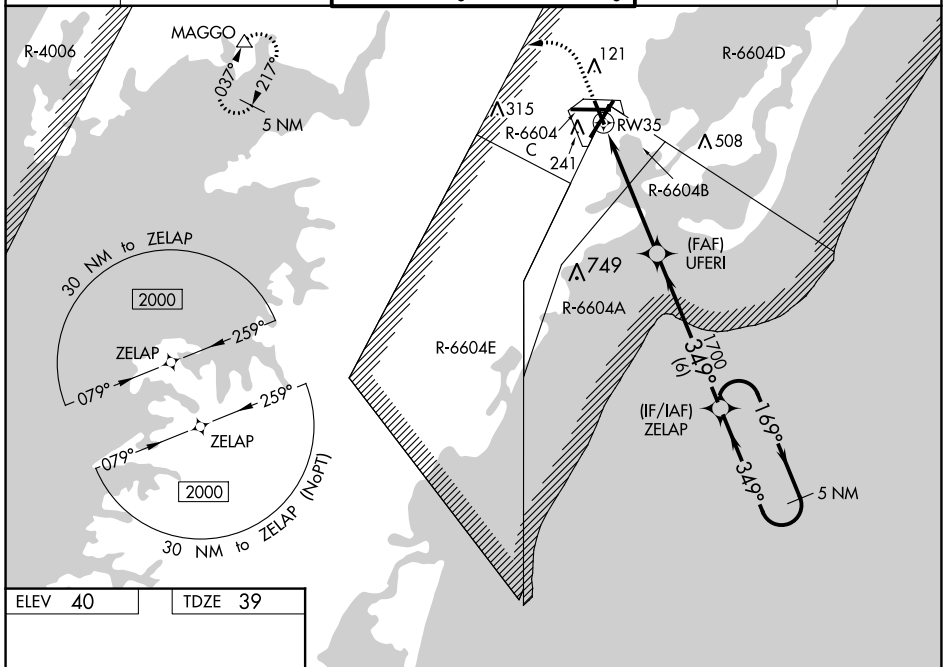
RNAV (GPS) RWY 35

WALLOPS FLIGHT FACILITY (WAL)

⚠ For uncompensated Baro-VNAV systems, LNAV/VNAV NA below -11°C (13°F) or above 54°C (130°F). DME/DME RNP-0.3 NA. When local altimeter setting not received, use Salisbury altimeter setting; increase LPV DA to 343; increase LNAV/VNAV DA to 464 and all Cats visibility ¼ mile; increase all MDA 60 feet and LNAV Cats C/D visibility ½ mile and Circling Cat C visibility ¼ mile. Baro-VNAV and VDP NA when using Salisbury altimeter setting. Helicopter visibility reduction below ¾ SM NA. Procedure NA when R-6604 active.

MISSED APPROACH: Climb to 600 then climbing left turn to 2000 direct MAGGO and hold.

ASOS 119.175	PATUXENT APP CON ★ 127.95 314.0	WALLOPS TOWER ★ 126.5 (CTAF) 0 306.975 (CTAF) 0	GND CON 127.875 269.325	CLNC DEL 121.7
------------------------	---	---	-----------------------------------	--------------------------



CATEGORY	A	B	C	D
LPV DA		289-1	250 (300-1)	
LNAV/VNAV DA		410-1¼	371 (400-1¼)	
LNAV MDA	460-1	421 (500-1)	460-1¼	421 (500-1¼)
CIRCLING	600-1	560 (600-1)	620-1½ 580 (600-1½)	860-2¾ 820 (900-2¾)

NE-3, 22 FEB 2024 to 21 MAR 2024

NE-3, 22 FEB 2024 to 21 MAR 2024

WAAS CH 56331 W04A	APP CRS 043°	Rwy Idg TDZE Apt Elev	8748 37 40
--	------------------------	-----------------------------	---------------------------------------

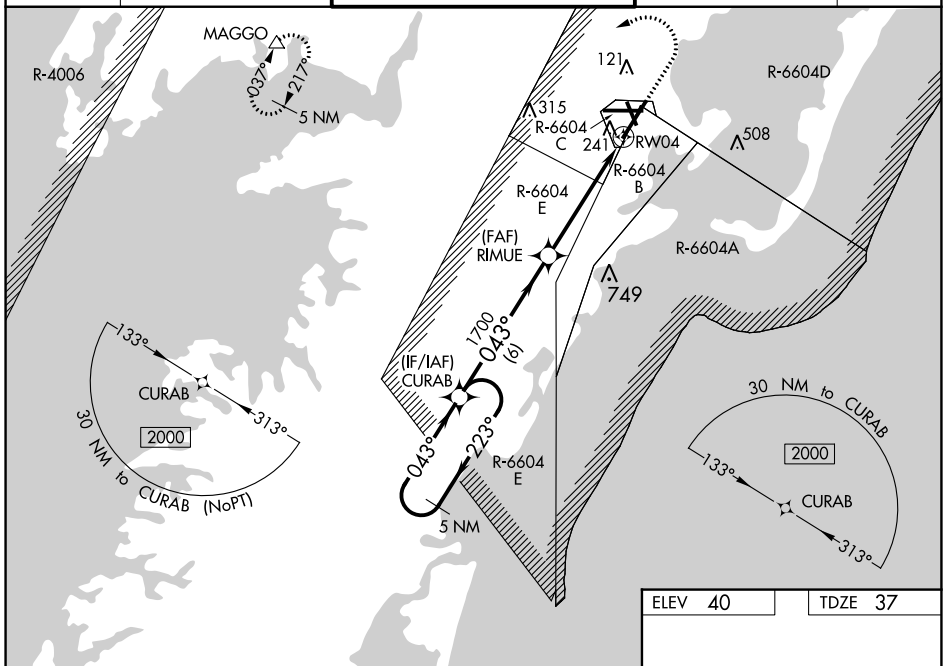
RNAV (GPS) RWY 4

WALLOPS FLIGHT FACILITY (WAL)

⚠ For uncompensated Baro-VNAV systems, LNAV/VNAV NA below -11°C (13°F) or above 54°C (130°F). DME/DME RNP-0.3 NA. When local altimeter setting not received, use Salisbury altimeter setting: increase LPV DA to 342 and all Cats visibility ¼ mile; increase LNAV/VNAV DA to 510 and all Cats visibility ¼ mile; increase all MDA 60 feet and LNAV Cats C/D and Circling Cat C visibility ¼ mile. Baro-VNAV and VDP NA when using Salisbury altimeter setting.

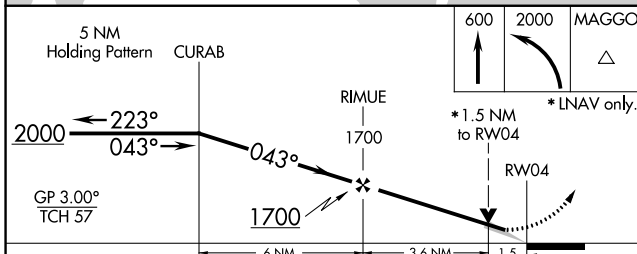
MISSED APPROACH: Climb to 600 then climbing left turn to 2000 direct MAGGO and hold.

ASOS 119.175	PATUXENT APP CON * 127.95 314.0	WALLOPS TOWER * 126.5 (CTAF) 0 306.975 (CTAF) 0	GND CON 127.875 269.325	CLNC DEL 121.7
------------------------	---	---	-----------------------------------	--------------------------

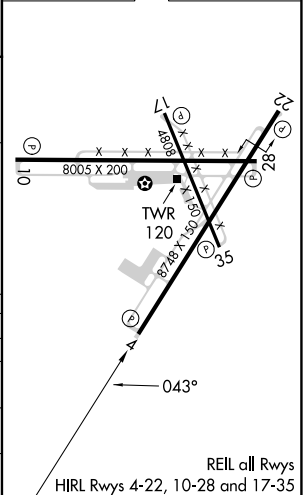


NE-3, 22 FEB 2024 to 21 MAR 2024

NE-3, 22 FEB 2024 to 21 MAR 2024



ELEV 40	TDZE 37
---------	---------



CATEGORY	A	B	C	D
LPV DA		287-¾	250 (300-¾)	
LNAV/VNAV DA		455-1⅞	418 (500-1⅞)	
LNAV MDA	560-1	523 (600-1)	560-1½	523 (600-1½)
C CIRCLING	600-1	560 (600-1)	620-1½ 580 (600-1½)	860-2¾ 820 (900-2¾)

VORTAC SBY 111.2 Chan 49	APP CRS SBY [24.1] Arc	Rwy Idg 8005 TDZE 38 Apt Elev 40
--	----------------------------------	---

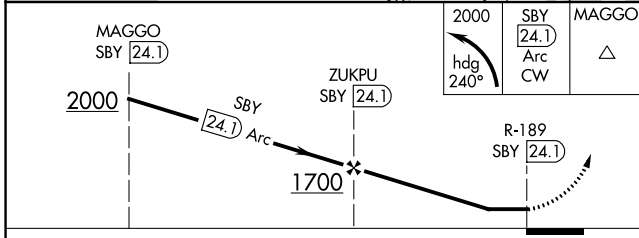
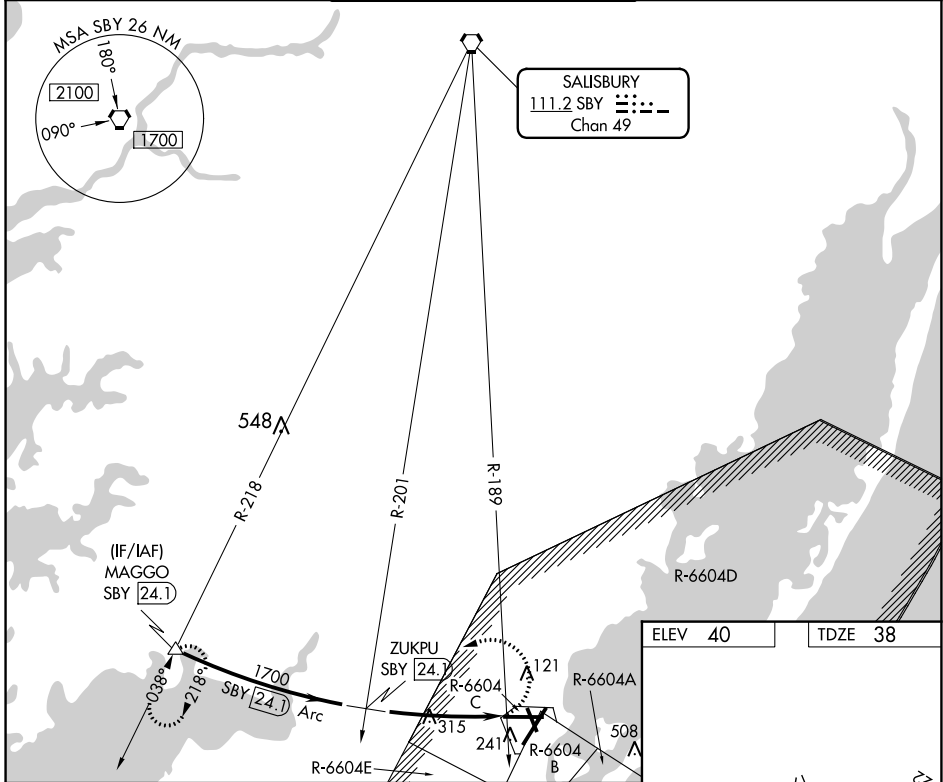
VOR/DME or TACAN RWY 10

WALLOPS FLIGHT FACILITY (WAL)

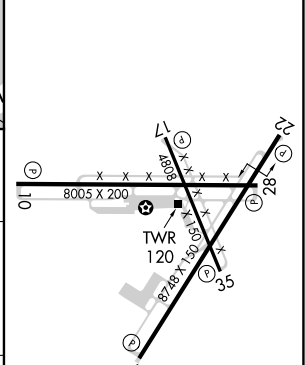
⚠ When local altimeter setting not received, use Salisbury altimeter setting and increase all MDA 60 feet and Circling Cts C/D visibility ¼ mile. Helicopter visibility reduction below ¾ SM NA.

MISSED APPROACH: Climbing left turn to 2000 on heading 240° and SBY VORTAC 24.1 DME Arc clockwise to MAGGO/SBY 24.1 DME and hold.

ASOS 119.175	PATUXENT APP CON ★ 127.95 314.0	WALLOPS TOWER ★ 126.5 (CTAF) 0 306.975 (CTAF) 0	GND CON 127.875 269.325	CLNC DEL 121.7
------------------------	---	---	-----------------------------------	--------------------------



ELEV 40	TDZE 38
---------	---------



CATEGORY	A	B	C	D
S-10	900-1¼	862 (900-1¼)	900-2½	862 (900-2½)
C CIRCLING	900-1¼	860 (900-1¼)	900-2½ 860 (900-2½)	900-2¾ 860 (900-2¾)

REIL all Rwys
HIRL Rwys 4-22, 10-28 and 17-35

NE-3, 22 FEB 2024 to 21 MAR 2024

NE-3, 22 FEB 2024 to 21 MAR 2024

VORTAC SWL 112.4 Chan 71	APP CRS 190°	Rwy Idg 4808 TDZE 39 Apt Elev 40
---------------------------------------	------------------------	---

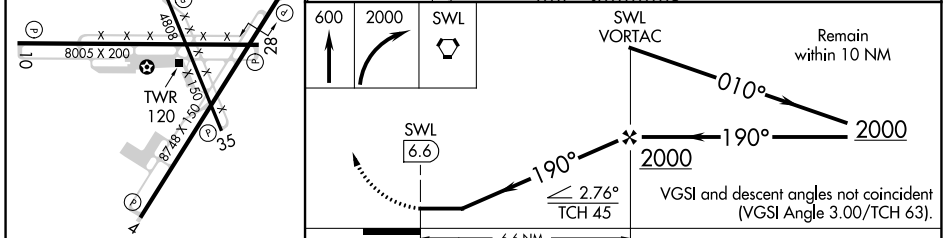
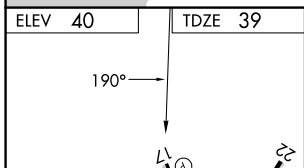
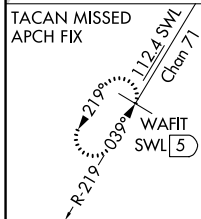
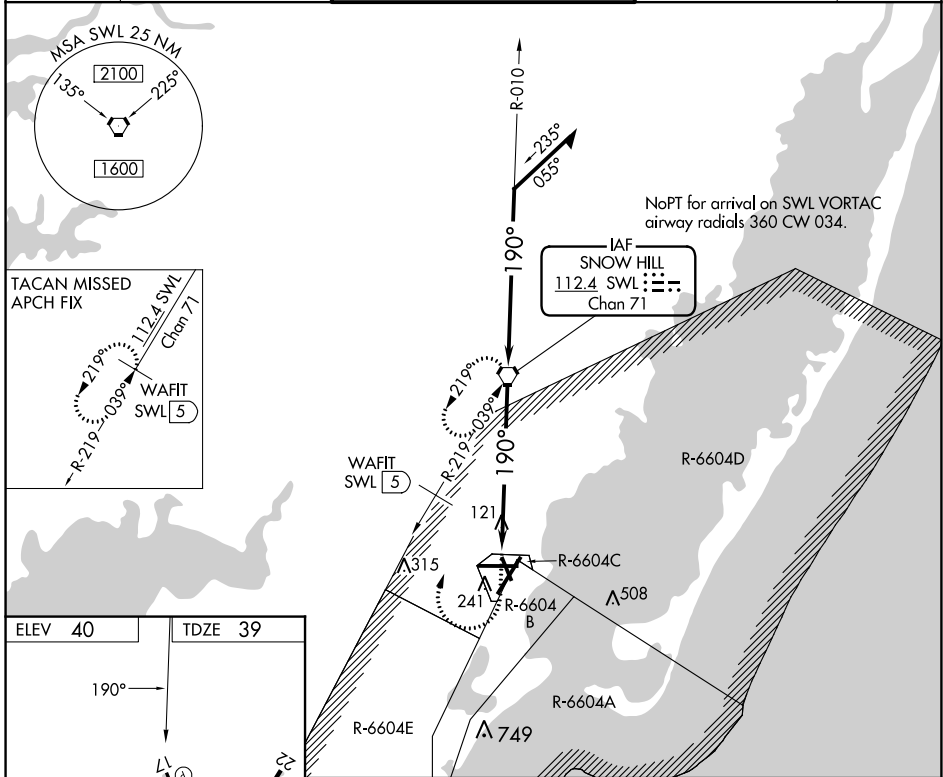
VOR or TACAN RWY 17

WALLOPS FLIGHT FACILITY (WAL)

⚠ When local altimeter setting not received, use Salisbury altimeter setting and increase all MDA 60 feet and S-17 Cats C/D and Circling Cat C visibility ¼ mile. Helicopter visibility reduction below ¾ SM NA.

MISSED APPROACH: Climb to 600 then climbing right turn to 2000 direct SWL VORTAC and hold. (TACAN aircraft climb to 600 then climbing right turn to 2000 on heading 300° and SWL VORTAC R-219 to WAFIT/SWL 5 DME and hold SW, LT 039° inbound.)

ASOS 119.175	PATUXENT APP CON ★ 127.95 314.0	WALLOPS TOWER ★ 126.5 (CTAF) 0 306.975 (CTAF) 0	GND CON 127.875 269.325	CLNC DEL 121.7
------------------------	---	---	-----------------------------------	--------------------------



REIL all Rwys
HIRL Rwys 4-22, 10-28 and 17-35

FAF to MAP 6.6 NM

Knots	60	90	120	150	180
Min:Sec	6:36	4:24	3:18	2:38	2:12

CATEGORY	A	B	C	D
S-17	540-1 501 (500-1)		540-1⅜ 501 (500-1⅜)	
C CIRCLING	600-1 560 (600-1)		620-1½ 580 (600-1½)	860-2¾ 820 (900-2¾)

NE-3, 22 FEB 2024 to 21 MAR 2024

NE-3, 22 FEB 2024 to 21 MAR 2024