

LOC I-VDI 110.3	APP CRS 249°	Rwy Idg TDZE Apt Elev	6002 273 274
---------------------------	------------------------	-----------------------------	---

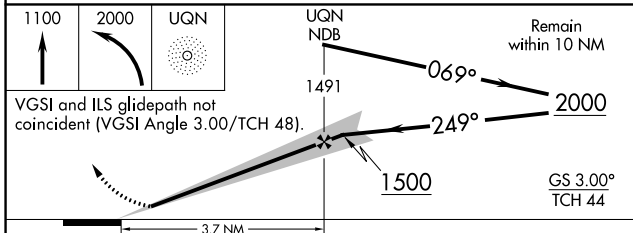
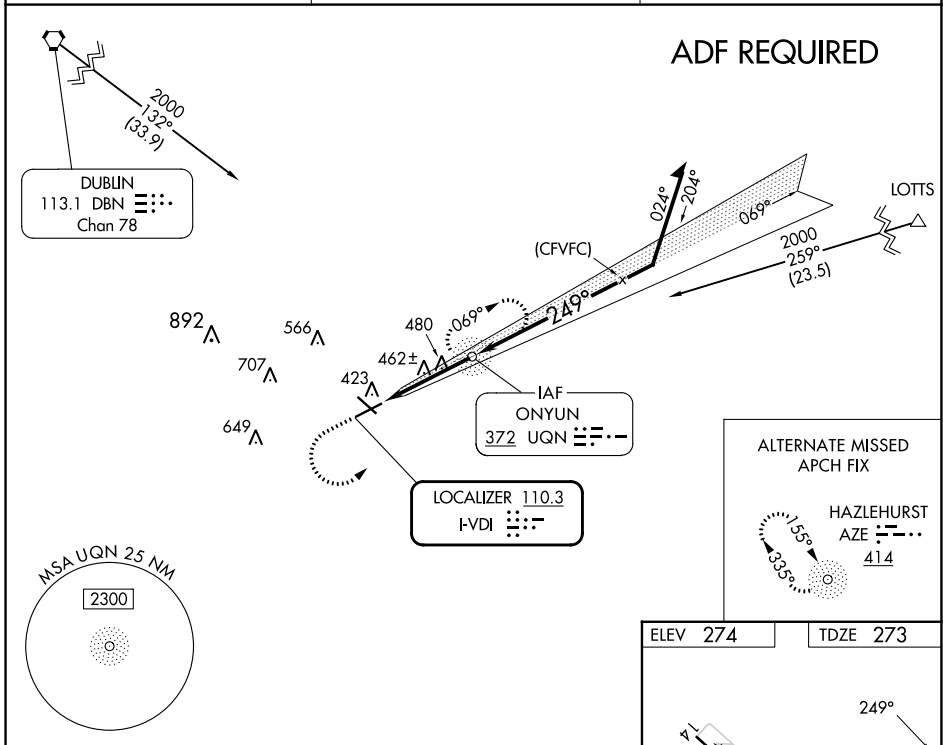
ILS or LOC RWY 25

VIDALIA RGNL (VDI)

NA When local altimeter setting not received, use Baxley altimeter setting and increase all DAs 77 feet and all MDAs 80 feet, increase S-LOC 25 Cat C/D visibility 1/8 mile, Circling Cat C/D visibility 1/4 mile. For inop MALSRL, increase S-LOC 25 Cat C/D visibility to 1 3/8 mile. For inop MALSRL, when using Baxley altimeter setting increase S-ILS 25 all Cats visibility to 3/8 mile. Night landing Rwy 32 NA. ADF required.

MALSRL
MISSED APPROACH: Climb to 1100 then climbing left turn to 2000 direct UQN NDB and hold.

AWOS-3 119.925	JACKSONVILLE CENTER 127.575 269.025	UNICOM 122.8 (CTAF)
--------------------------	---	-------------------------------



ELEV 274	TDZE 273
HIRL Rwy 7-25	
REIL Rwy 7	
FAF to MAP 3.7 NM	
Knots	60 90 120 150 180
Min:Sec	3:42 2:28 1:51 1:29 1:14

CATEGORY	A	B	C	D
S-ILS 25	473-1/2		200 (200-1/2)	
S-LOC 25	740-1/2	467 (500-1/2)	740-1	467 (500-1)
C CIRCLING	740-1	466 (500-1)	920-1 3/4 646 (700-1 3/4)	1060-2 1/2 786 (800-2 1/2)

SE-4, 22 FEB 2024 to 21 MAR 2024

SE-4, 22 FEB 2024 to 21 MAR 2024

RNAV (GPS) RWY 25

VIDALIA RGNL (VDI)

WAAS CH 69609 W25A	APP CRS 249°	Rwy Idg TDZE Apt Elev	6002 273 274
--	------------------------	-----------------------------	---

RNP APCH - GPS.

▼ Circling Rwy 32 NA at night. For uncompensated Baro-VNAV systems, LNAV/VNAV NA below -15°C or above 54°C. For inop ALS, increase LNAV/VNAV all Cats visibility to ¾ SM and LNAV Cat C/D to 1 ½ SM.

MALS/R

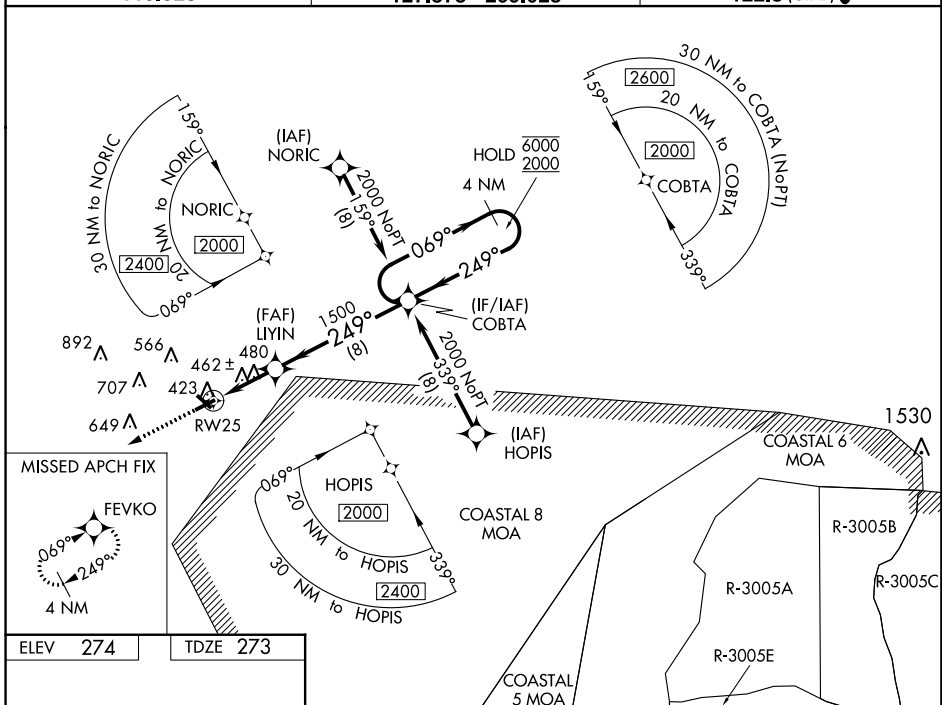


MISSED APPROACH:
Climb to 2000 direct FEVKO and hold.

AWOS-3
119.925

JACKSONVILLE CENTER
127.575 269.025

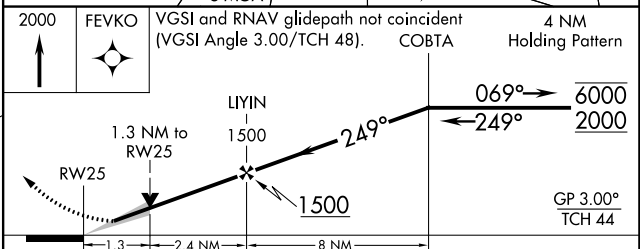
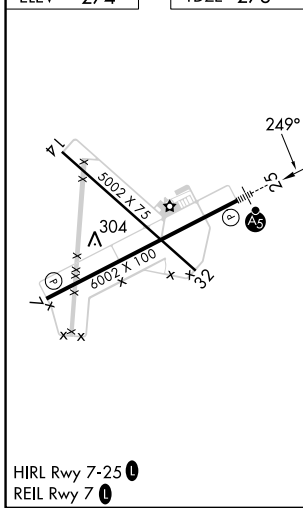
UNICOM
122.8 (CTAF) 0



SE-4, 22 FEB 2024 to 21 MAR 2024

SE-4, 22 FEB 2024 to 21 MAR 2024

ELEV 274	TDZE 273
----------	----------



CATEGORY	A	B	C	D
LPV DA	473-½		200 (200-½)	
LNAV/VNAV DA	584-½		311 (400-½)	
LNAV MDA	740-½ 467 (500-½)		740-1 467 (500-1)	
C CIRCLING	740-1 466 (500-1)		920-1¾ 1060-2½ 646 (700-1¾) 786 (800-2½)	

RNAV (GPS) RWY 7

VIDALIA RGNL (VDI)

WAAS CH 66037 W07A	APP CRS 069°	Rwy Idg TDZE Apt Elev	6002 274 274
--	------------------------	-----------------------------	---

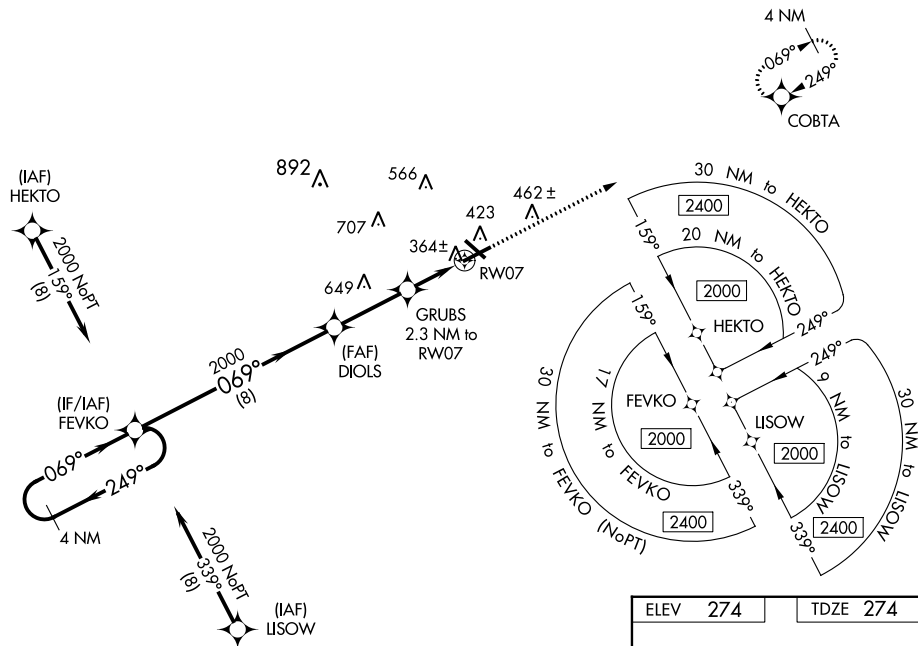
⚠ For uncompensated Baro-VNAV systems, LNAV/VNAV NA below -15°C (5°F) or above 54°C (130°F). DME/DME RNP-0.3 NA. When local altimeter setting not received, use Baxley altimeter setting and increase all DA 77 feet and all MDA 80 feet, increase LPV and LNAV/VNAV all Cats visibility ¼ mile, LNAV and Circling Cats C/D visibility ¼ mile. VDP and Baro-VNAV NA when using Baxley altimeter setting. Night Landing: Rwy 32 NA. Helicopter visibility reduction below ¾ SM NA.

MISSED APPROACH:
Climb to 2000 direct COBTA and hold.

AWOS-3
119.925

JACKSONVILLE CENTER
127.575 269.025

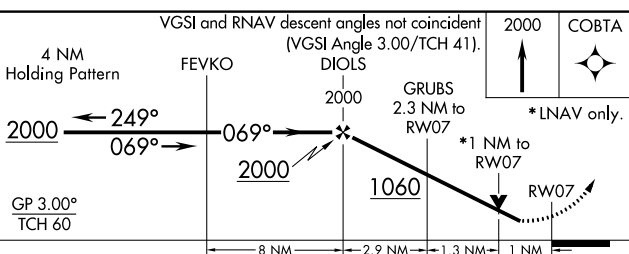
UNICOM
122.8 (CTAF) ①



SE-4, 22 FEB 2024 to 21 MAR 2024

SE-4, 22 FEB 2024 to 21 MAR 2024

ELEV 274	TDZE 274
-----------------	-----------------



CATEGORY	A	B	C	D
LPV DA		524-¾	250 (300-¾)	
LNAV/VNAV DA		527-¾	253 (300-¾)	
LNAV MDA		620-1	346 (400-1)	
C CIRCLING	740-1	466 (500-1)	920-1¾ 646 (700-1¾)	1060-2½ 786 (800-2½)

