

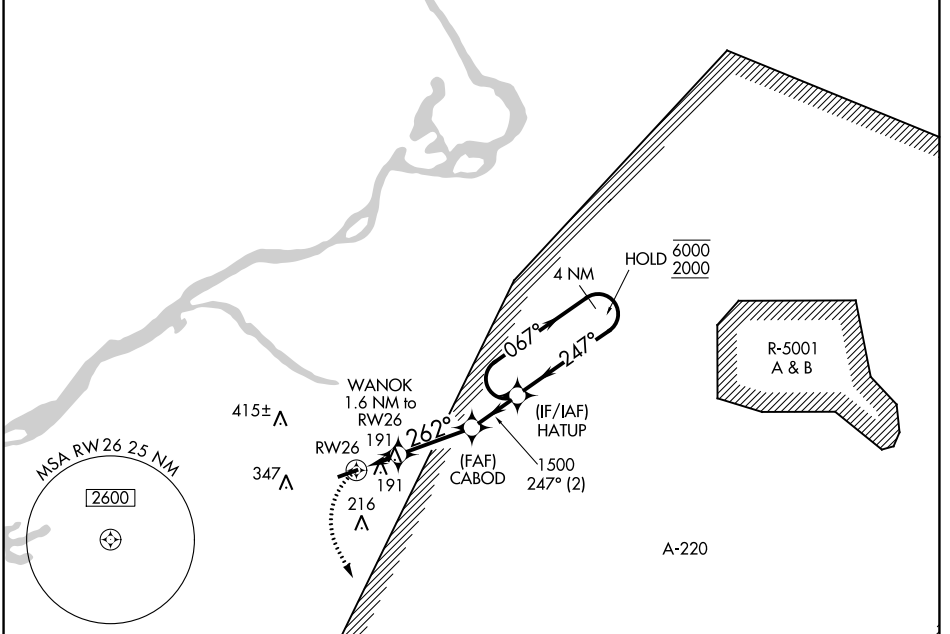
APP CRS	Rwy Idg	3881
262°	TDZE	53
	Apt Elev	53

RNAV (GPS) RWY 26

SOUTH JERSEY RGNL (VAY)

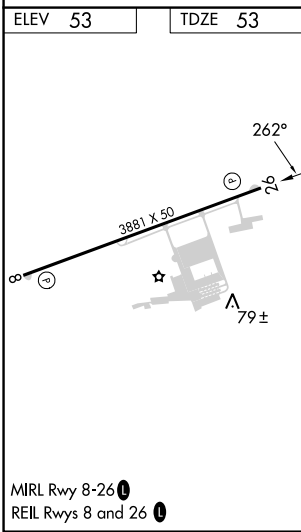
RNP APCH.		MISSED APPROACH: Climbing left turn to 2000 direct INNEZ and hold.	
Rwy 26 helicopter visibility reduction below 1 SM NA. Procedure NA at night.			

ASOS	MC GUIRE APP CON	UNICOM	123.3
119.325	126.475 363.8	122.8 (CTAF)	



NE-2, 22 FEB 2024 to 21 MAR 2024

NE-2, 22 FEB 2024 to 21 MAR 2024



ELEV 53	TDZE 53		
CATEGORY	A	B	C D
LNAV MDA	480-1	427 (500-1)	NA
CIRCLING	520-1	540-1	NA
	467 (500-1)	487 (500-1)	

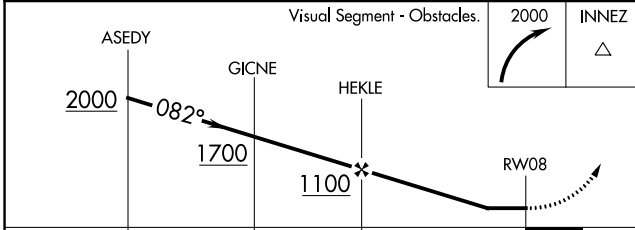
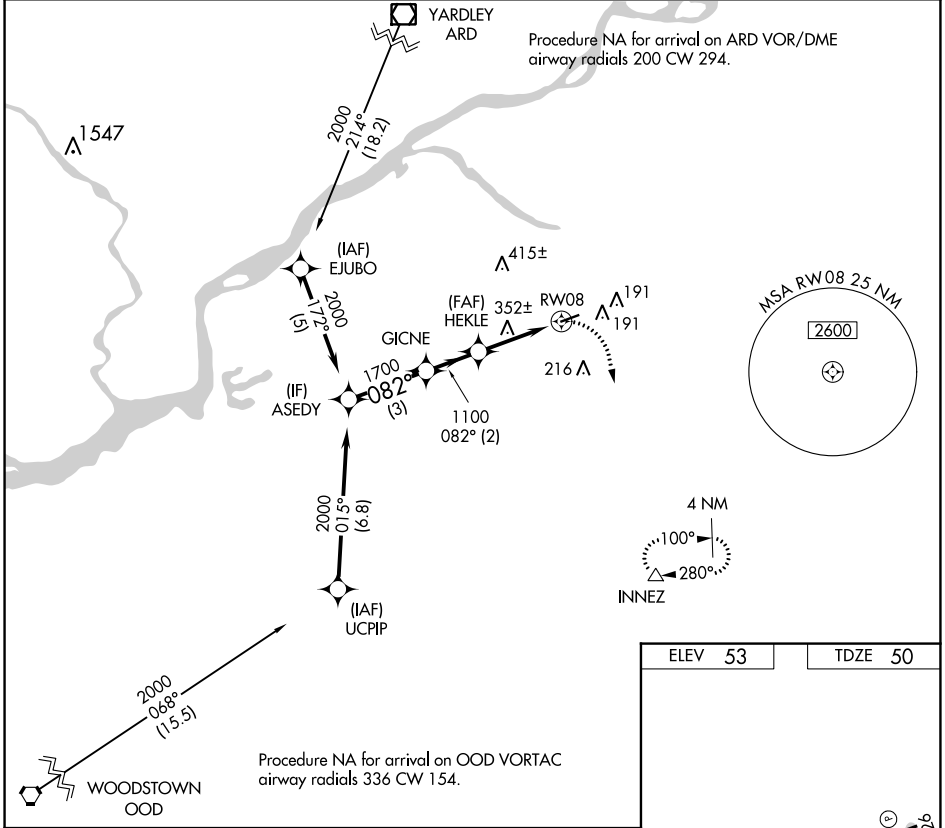
WAAS CH 69324 W08A	APP CRS 082°	Rwy Idg TDZE Apt Elev	3881 50 53
--	------------------------	-----------------------------	---------------------------------------

RNAV (GPS) RWY 8

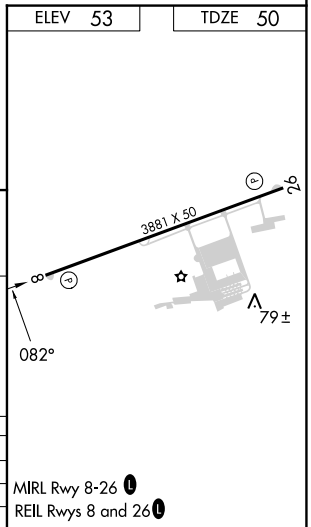
SOUTH JERSEY RGNL (VAY)

RNP APCH.	MISSED APPROACH: Climbing right turn to 2000 direct INNEZ and hold.
<p>▼ Procedure NA at night.</p> <p>▲ Rwy 8 helicopter visibility reduction below 1 SM NA.</p>	

ASOS 119.325	MC GUIRE APP CON 126.475 363.8	UNICOM 122.8 (CTAF)	123.3
------------------------	--	-------------------------------	--------------



	3 NM		2 NM		3.2 NM		
CATEGORY	A	B	C	D			
LP MDA	660-1	610 (700-1)			NA		
LNAV MDA	660-1	610 (700-1)			NA		
CIRCLING	660-1	607 (700-1)			NA		



NE-2, 22 FEB 2024 to 21 MAR 2024

NE-2, 22 FEB 2024 to 21 MAR 2024

VORTAC RBV 113.8 Chan 85	APP CRS 236°	Rwy Idg 3881 TDZE 53 Apt Elev 53
--	------------------------	---

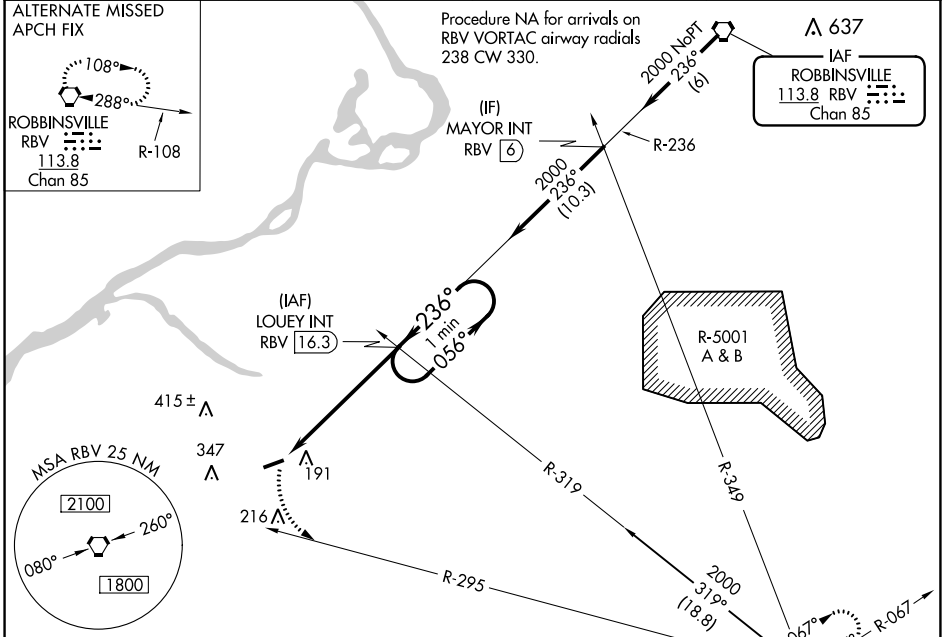
VOR RWY 26

SOUTH JERSEY RGNL (VAY)

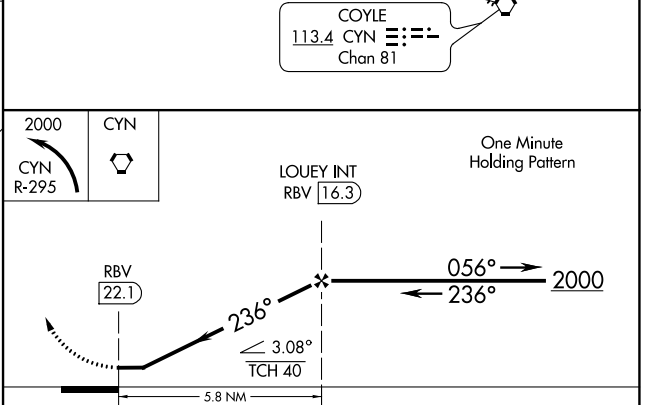
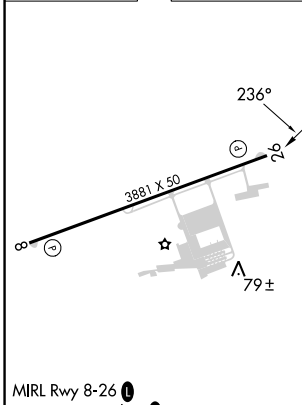
When local altimeter setting not received, use Northeast Philadelphia altimeter setting and increase all MDA 40 feet. Procedure NA at night. Helicopter visibility reduction below 1 SM NA.

MISSED APPROACH: Climbing left turn to 2000 on CYN VORTAC R-295 to CYN VORTAC and hold.

ASOS 119.325	MC GUIRE APP CON 126.475 363.8	UNICOM 122.8 (CTAF)	123.3
------------------------	--	-------------------------------	--------------



ELEV 53	TDZE 53
---------	---------



FAF to MAP 5.8 NM					
Knots	60	90	120	150	180
Min:Sec	5:48	3:52	2:54	2:19	1:56
CATEGORY	A	B	C	D	
S-26	640-1	587 (600-1)	NA		
CIRCLING	640-1	640-1 1/4	NA		
	587 (600-1)	587 (600-1 1/4)			

NE-2, 22 FEB 2024 to 21 MAR 2024

NE-2, 22 FEB 2024 to 21 MAR 2024