

LOC I-BUZ 111.7	APP CRS 037°	Rwy Idg TDZE Apt Elev	5500 904 904
---------------------------	------------------------	-----------------------------	---

ILS or LOC RWY 4

BOLTON FLD (TZR)

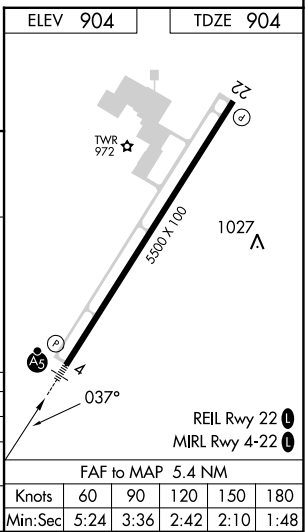
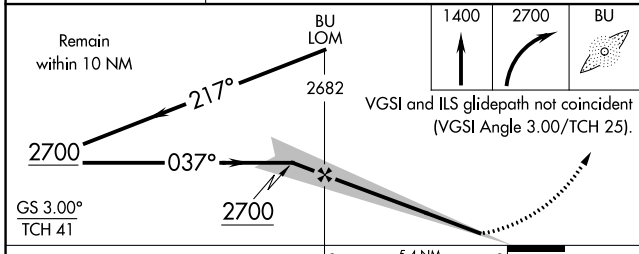
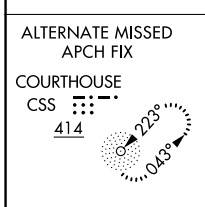
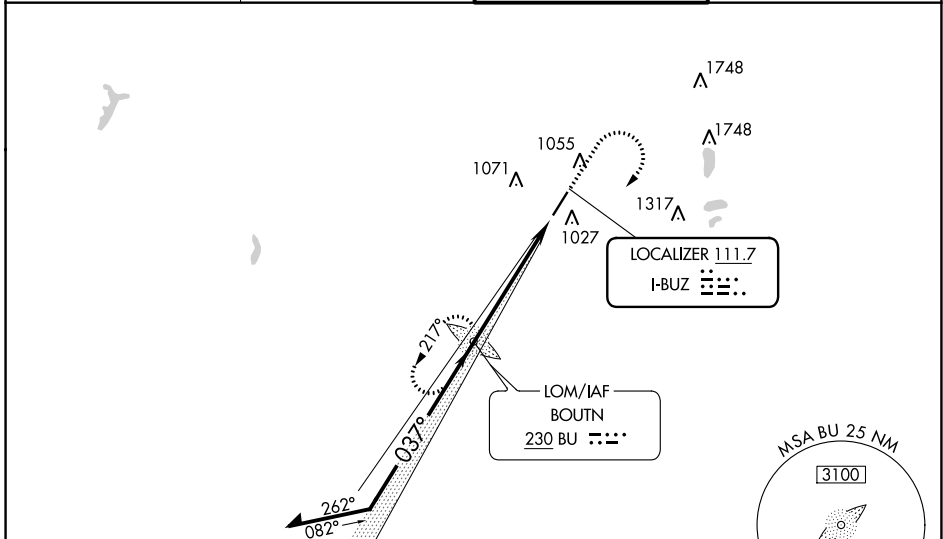
ADF required.
RADAR required for procedure entry.

▼ AutoPilot coupled approach NA below 1144.

MALSR

MISSED APPROACH: Climb to 1400 then climbing right turn to 2700 direct BU LOM and hold.

AWOS-3PT 135.925	COLUMBUS APP CON 134.0 279.6	BOLTON TOWER ★ 128.1 (CTAF) 0	GND CON 121.8
----------------------------	--	---	-------------------------



CATEGORY	A	B	C	D
S-ILS 4		1104-½	200 (200-½)	
S-LOC 4	1360-½ 456 (500-½)		1360-¾ 456 (500-¾)	1360-1 456 (500-1)
CIRCLING	1360-1 456 (500-1)	1380-1 476 (500-1)	1380-1½ 476 (500-1½)	1500-2 596 (600-2)

EC-2, 05 OCT 2023 to 02 NOV 2023

EC-2, 05 OCT 2023 to 02 NOV 2023

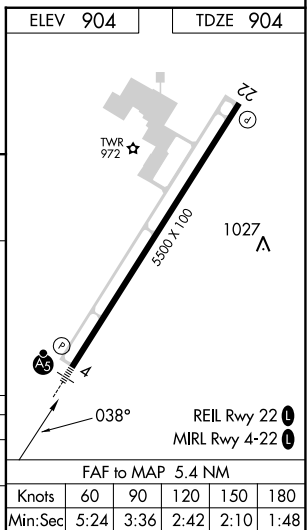
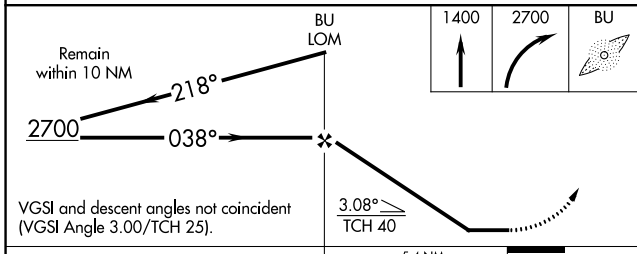
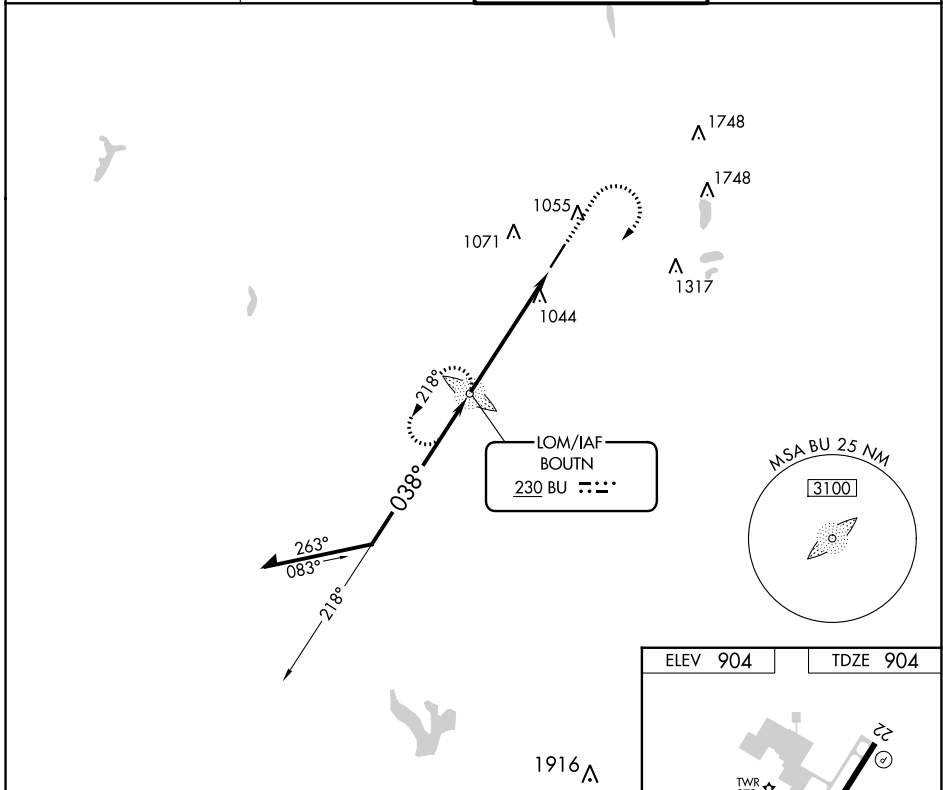
LOM BU 230	APP CRS 038°	Rwy Idg TDZE Apt Elev	5500 904 904
----------------------	------------------------	-----------------------------	---

NDB RWY 4

BOLTON FLD (TZR)

RADAR required for procedure entry.		MALS	MISSED APPROACH: Climb to 1400 then climbing right turn to 2700 direct BU LOM and hold.
∇	For inop ALS, increase S-4 Cats A/B visibility to 1 SM and S-4		
▲	Cats C/D visibility to 1 3/8 SM.		

AWOS-3PT 135.925	COLUMBUS APP CON 134.0 279.6	BOLTON TOWER★ 128.1 (CTAF)	GND CON 121.8
----------------------------	--	--------------------------------------	-------------------------



CATEGORY	A	B	C	D
S-4	1400-3/4	496 (500-3/4)	1400-1 496 (500-1)	1400-1 1/4 496 (500-1 1/4)
C CIRCLING	1400-1	496 (500-1)	1400-1 1/2 496 (500-1 1/2)	1500-2 596 (600-2)

EC-2, 05 OCT 2023 to 02 NOV 2023

EC-2, 05 OCT 2023 to 02 NOV 2023

WAAS CH 65641 W22A	APP CRS 217°	Rwy Idg TDZE Apt Elev	5500 904 904
--	------------------------	-----------------------------	---

RNAV (GPS) RWY 22

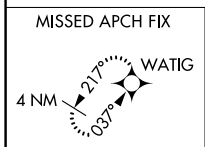
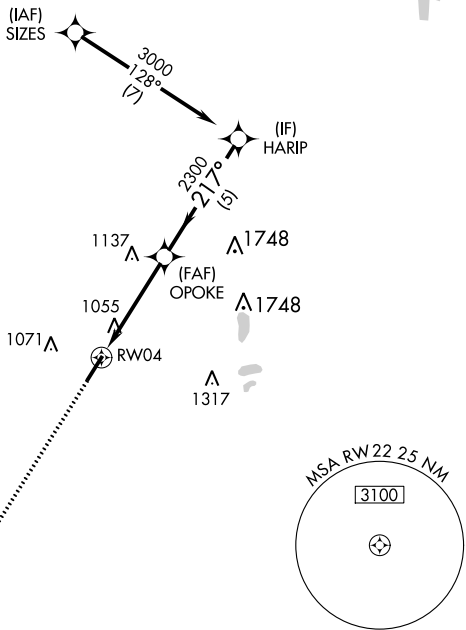
BOLTON FLD (TZR)

⚠ For uncompensated Baro-VNAV systems, LNAV/VNAV NA below -16°C (4°F) or above 54°C (130°F). Baro-VNAV and VDP NA when using John Glenn Columbus Intl altimeter setting. DME/DME RNP-0.3 NA. When local altimeter setting not received use John Glenn Columbus Intl setting and increase LPV DA to 1196 feet and LNAV/VNAV DA to 1382 feet and all MDA 60 feet; increase LPV and LNAV/VNAV all Cats visibility 1/8 SM, and LNAV Cat C/D visibility 1/4 SM.

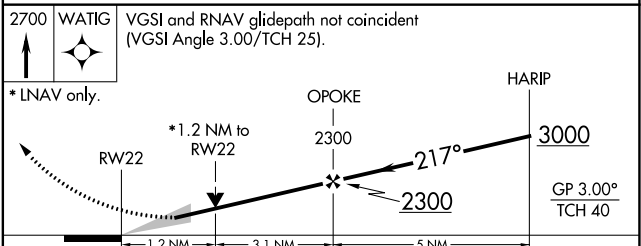
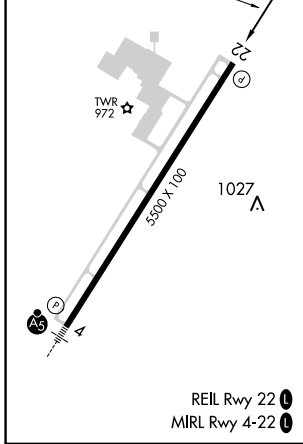
MISSED APPROACH:
Climb to 2700 direct WATIG and hold.

AWOS-3PT 135.925	COLUMBUS APP CON 134.0 279.6	BOLTON TOWER ★ 128.1 (CTAF) 0	GND CON 121.8
----------------------------	--	---	-------------------------

RADAR REQUIRED



ELEV 904	TDZE 904
-----------------	-----------------



CATEGORY	A	B	C	D
LPV DA	1154-7/8 250 (300-7/8)			
LNAV/VNAV DA	1339-1/2 435 (500-1/2)			
LNAV MDA	1320-1	416 (500-1)	1320-1 1/8	416 (500-1 1/8)
<input checked="" type="checkbox"/> CIRCLING	1360-1 456 (500-1)	1380-1 476 (500-1)	1380-1 1/2 476 (500-1 1/2)	1500-2 596 (600-2)

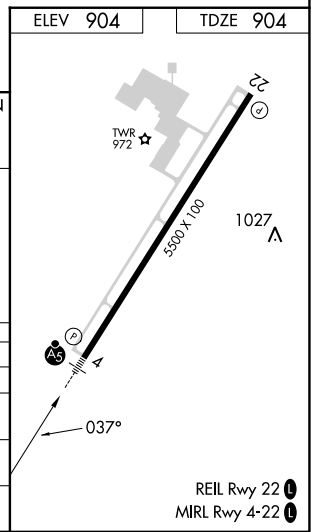
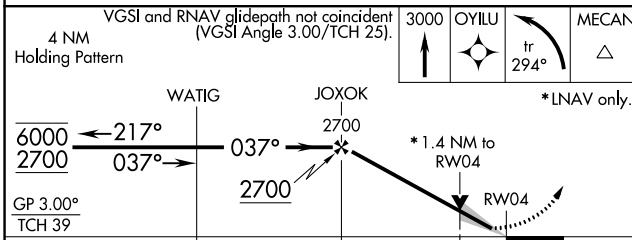
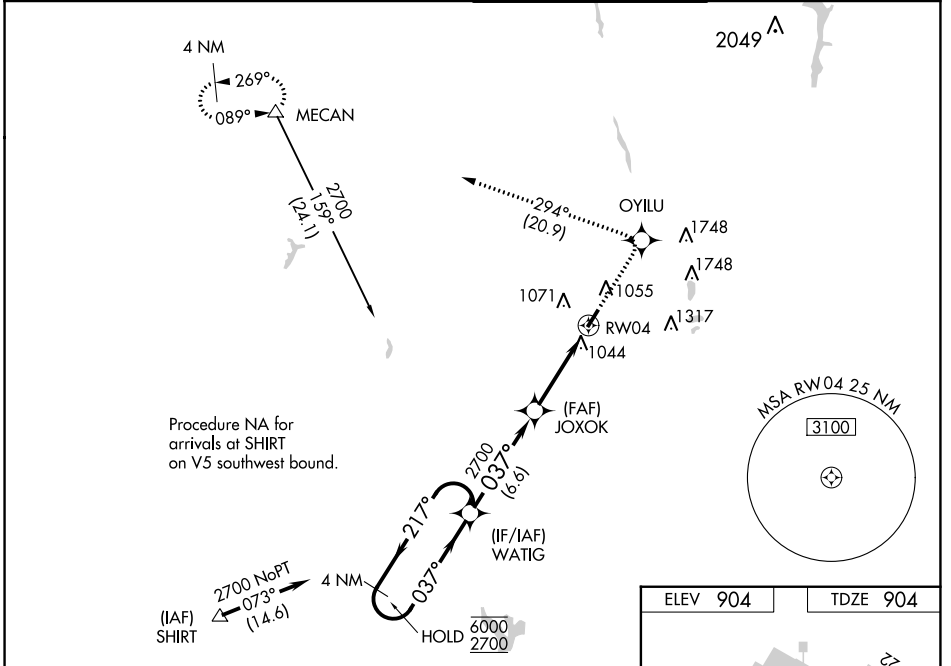
WAAS CH 90505 W04A	APP CRS 037°	Rwy Idg TDZE Apt Elev	5500 904 904
--	------------------------	-----------------------------	---

RNAV (GPS) RWY 4

BOLTON FLD (TZR)

RNP APCH.	MALSR	MISSED APPROACH: Climb to 3000 direct OYILU and left turn on track 294° to MECAN and hold.
<p>▼ For uncompensated Baro-VNAV systems, LNAV/VNAV NA below -16°C or above 54°C. For inop ALS, increase LNAV/VNAV all Cats visibility to 1¼ SM and LNAV Cats C/D visibility to 1½ SM.</p>		

AWOS-3PT 135.925	COLUMBUS APP CON 134.0 279.6	BOLTON TOWER ★ 128.1 (CTAF) 0	GND CON 121.8
----------------------------	--	---	-------------------------



CATEGORY	A	B	C	D
LPV DA	1163-½ 259 (300-½)			
LNAV/VNAV DA	1325-1 421 (500-1)			
LNAV MDA	1360-½	456 (500-½)	1360-⅞ 456 (500-⅞)	1360-1 456 (500-1)
CIRCLING	1360-1 456 (500-1)	1380-1 476 (500-1)	1380-1½ 476 (500-1½)	1500-2 596 (600-2)

EC-2, 05 OCT 2023 to 02 NOV 2023

EC-2, 05 OCT 2023 to 02 NOV 2023