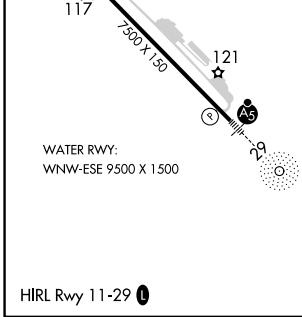
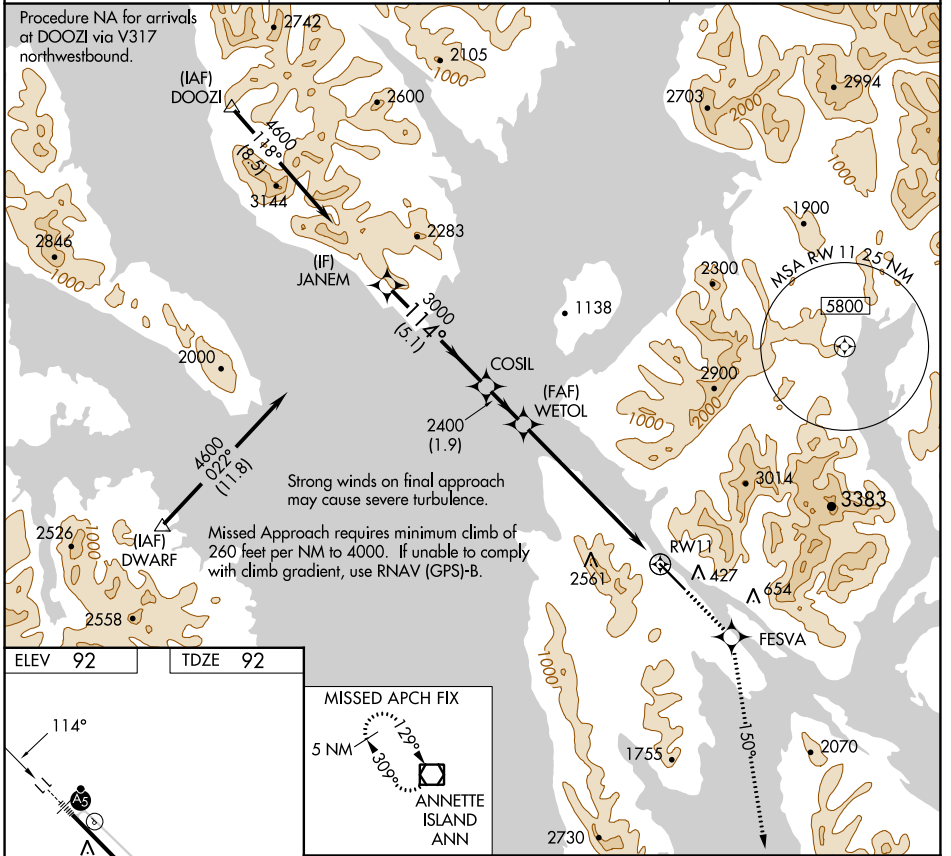


WAAS CH <b>58009</b> <b>W11A</b>	APP CRS <b>114°</b>	Rwy Idg TDZE Apt Elev <b>7500</b> <b>92</b> <b>92</b>
--	------------------------	--

# RNAV (GPS) RWY 11

KETCHIKAN INTL (KTN)(PAKT)

RNP APCH-GPS.		MALSRR	MISSED APPROACH: Climb to 5000 direct FESVA and on 150° track to ANN VOR/DME and hold.
▼ ▲ NA	For inoperative ALS, increase LPV DA visibility to RVR 6000.	AS	
AFIS <b>134.45</b>	ANCHORAGE CENTER <b>118.5 284.6</b>	KETCHIKAN RADIO <b>123.6 (CTAF) 0</b>	



Procedure	Turn NA	JANEM	COSIL	WETOL	5000	FESVA	150° tr	ANN
		4600	3000	2400	↑	✦	◻	
GP 3.00°								
TCH 50								
CATEGORY		A	B	C				D
LPV DA		442/40	350 (400-3/4)					NA

AK, 25 JAN 2024 to 21 MAR 2024

AK, 25 JAN 2024 to 21 MAR 2024