

LOC I-TCL <b>109.1</b> Chan 28	APP CRS <b>041°</b>	Rwy Idg <b>6498</b> TDZE <b>160</b> Apt Elev <b>170</b>
--------------------------------------	------------------------	---

# ILS or LOC RWY 4

TUSCALOOSA NTL (TCL)

RNP APCH - GPS. From ALICE, TIEDD or ROWLL.

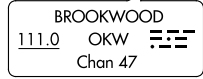
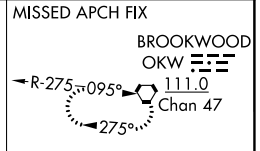
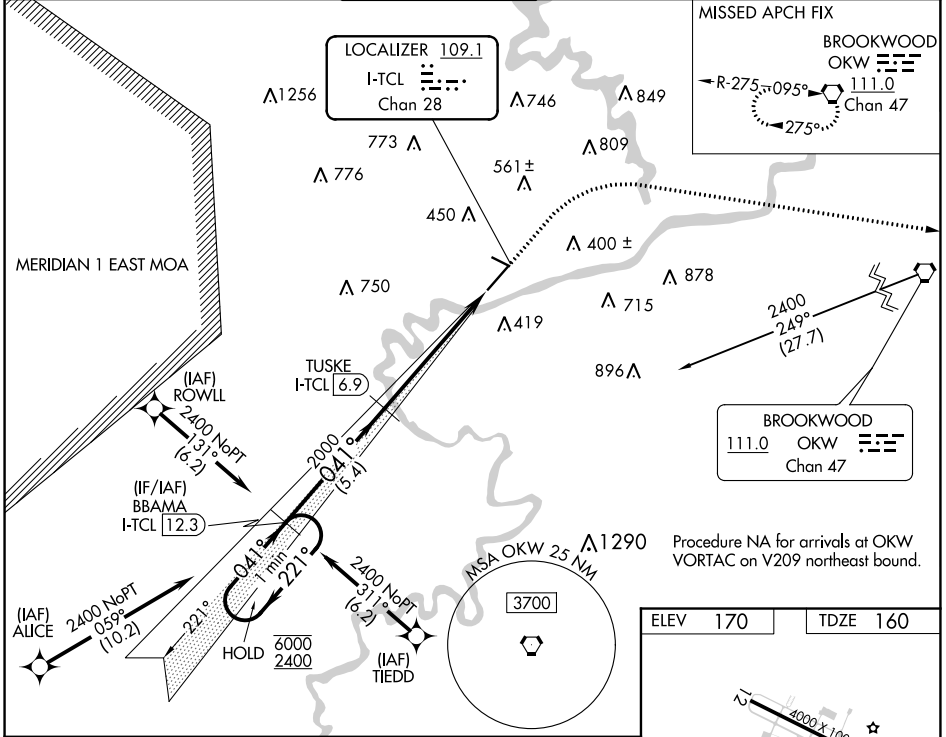
DME required.



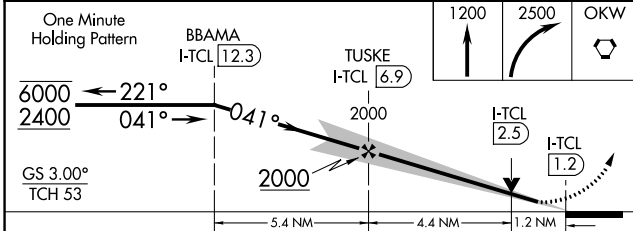
MISSED APPROACH: Climb to 1200 then climbing right turn to 2500 direct OKW VORTAC and hold.

**⚠** Circling Rwy 12, 30 NA at night.

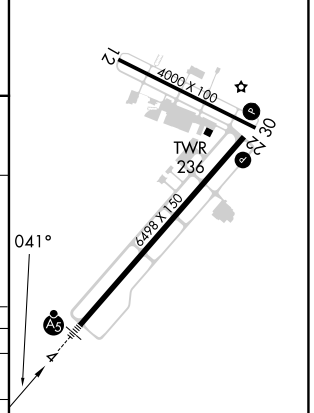
ASOS <b>132.825</b>	BIRMINGHAM APP CON <b>120.15 269.25</b>	TUSCALOOSA TOWER ★ <b>126.3</b> (CTAF) <b>0 256.7</b>	GND CON <b>121.8 257.95</b>	CLNC DEL <b>120.775</b>	UNICOM <b>122.95</b>
------------------------	--	--	--------------------------------	----------------------------	-------------------------



Procedure NA for arrivals at OKW VORTAC on V209 northeast bound.



ELEV 170	TDZE 160
----------	----------



CATEGORY	A	B	C	D
S-ILS 4		360-1/2	200 (200-1/2)	
S-LOC 4	600-1/2	440 (500-1/2)	600-3/4	440 (500-3/4)
<b>C</b> CIRCLING	720-1 550 (600-1)	800-1 630 (700-1)	960-2 1/4 790 (800-2 1/4)	960-2 1/2 790 (800-2 1/2)

SE-4, 22 FEB 2024 to 21 MAR 2024

SE-4, 22 FEB 2024 to 21 MAR 2024

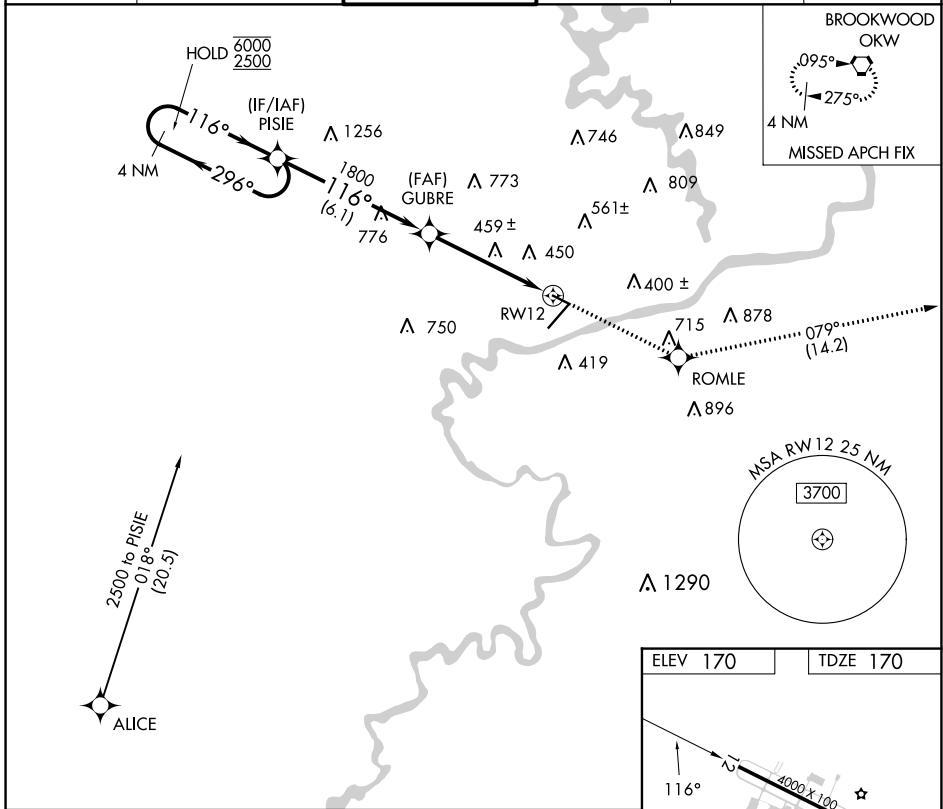
APP CRS	Rwy Idg	<b>4000</b>
<b>116°</b>	TDZE	<b>170</b>
	Apt Elev	<b>170</b>

# RNAV (GPS) RWY 12

TUSCALOOSA NTL (TCL)

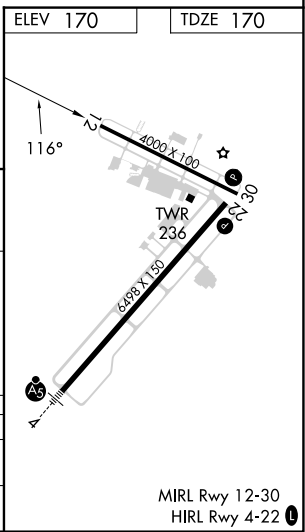
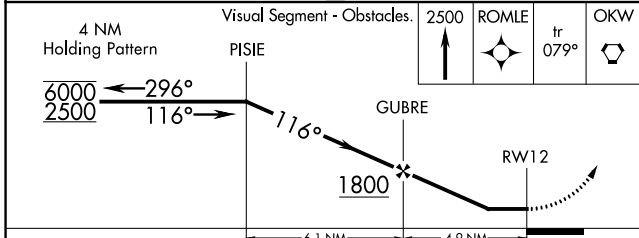
RNP APCH - GPS.	MISSED APPROACH: Climb to 2500 direct ROMLE then on track 079° to OKW VORTAC and hold.
<p>▼ Rwy 12 helicopter visibility reduction below 1 SM NA. Straight-in Rwy 12 NA at night,</p> <p>▲ Circling Rwy 30 NA at night.</p>	

ASOS <b>132.825</b>	BIRMINGHAM APP CON <b>120.15 269.25</b>	TUSCALOOSA TOWER ★ <b>126.3(CTAF) 0 256.7</b>	GND CON <b>121.8 257.95</b>	CLNC DEL <b>120.775</b>	UNICOM <b>122.95</b>
------------------------	--	--	--------------------------------	----------------------------	-------------------------



SE-4, 22 FEB 2024 to 21 MAR 2024

SE-4, 22 FEB 2024 to 21 MAR 2024



CATEGORY	A	B	C	D
LNAV MDA	720-1	550 (600-1)	720-1½	550 (600-1½)
CIRCLING	720-1 550 (600-1)	800-1 630 (700-1)	960-2¼ 790 (800-2¼)	960-2½ 790 (800-2½)

WAAS CH <b>81918</b> <b>W22A</b>	APP CRS <b>221°</b>	Rwy Idg TDZE Apt Elev	<b>6498</b> <b>164</b> <b>170</b>
--	------------------------	-----------------------------	---

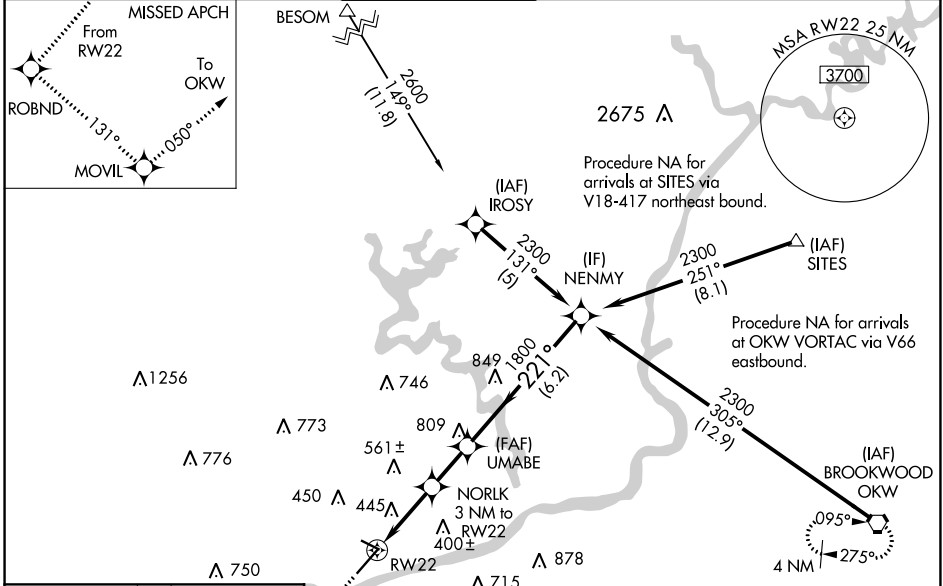
# RNAV (GPS) RWY 22

TUSCALOOSA NTL (TCL)

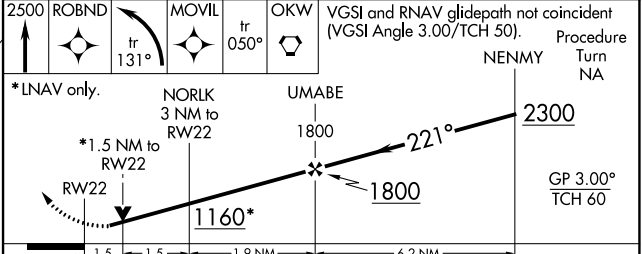
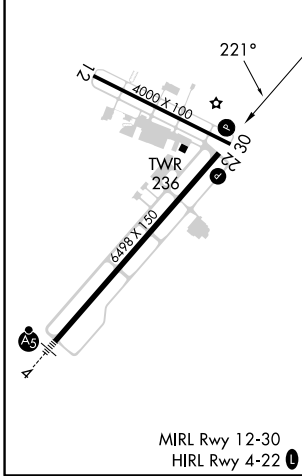
**▼** For uncompensated Baro-VNAV systems, LNAV/VNAV NA below -15°C (5°F) or above 48°C (118°F). DME/DME RNP-0.3 NA. Helicopter visibility reduction below 3/4 SM NA. When local altimeter setting not received, use Birmingham altimeter setting: increase LPV DA to 760 feet and all visibilities 1/2 SM; increase LNAV/VNAV DA to 937 feet and all visibilities 3/4 SM; increase all MDAs 180 feet and visibility LNAV Cats C and D 1/2 SM and Circling Cat C 3/4 SM and Cat D 1/2 SM. Baro-VNAV and VDP NA when using Birmingham altimeter setting. Circling Rwy 12, 30 NA at night.

**MISSED APPROACH:** Climb to 2500 direct ROBND and left turn on track 131° to MOVIL and on 050° track to OKW VORTAC and hold.

ASOS <b>132.825</b>	BIRMINGHAM APP CON <b>120.15 269.25</b>	TUSCALOOSA TOWER ★ <b>126.3(CTAF) 0 256.7</b>	GND CON <b>121.8 257.95</b>	CLNC DEL <b>120.775</b>	UNICOM <b>122.95</b>
------------------------	--	--	--------------------------------	----------------------------	-------------------------



ELEV 170	TDZE 164
----------	----------



CATEGORY	A	B	C	D
LPV DA		582-1½	418 (500-1½)	
LNAV/VNAV DA		759-2	595 (600-2)	
LNAV MDA	700-1	536 (600-1)	700-1½ 536 (600-1½)	700-1¾ 536 (600-1¾)
CIRCLING	720-1 550 (600-1)	800-1 630 (700-1)	960-2¼ 790 (800-2¼)	960-2½ 790 (800-2½)

SE-4, 22 FEB 2024 to 21 MAR 2024

SE-4, 22 FEB 2024 to 21 MAR 2024

APP CRS	Rwy Idg	<b>4000</b>
<b>297°</b>	TDZE	<b>170</b>
	Apt Elev	<b>170</b>

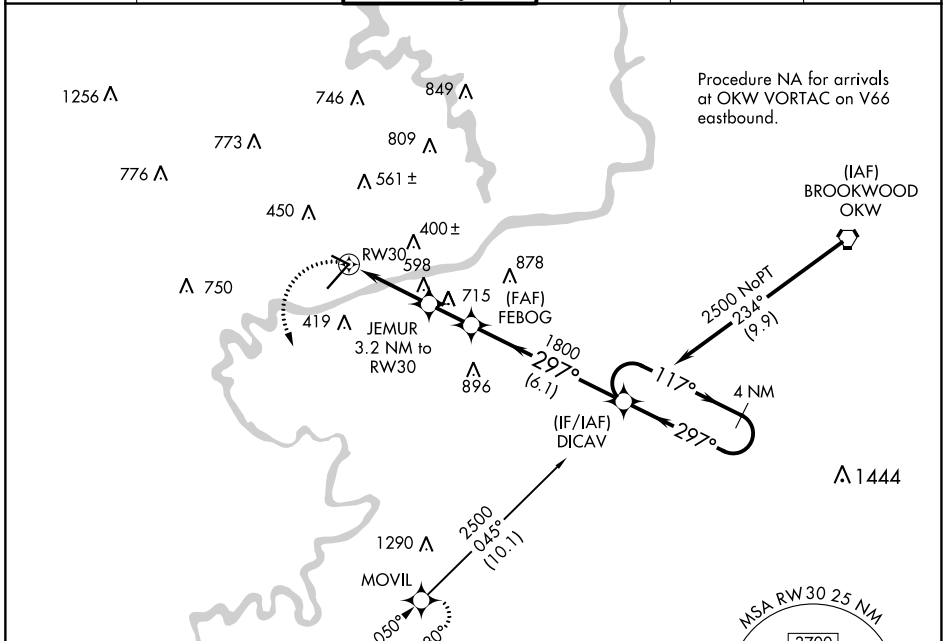
# RNAV (GPS) RWY 30

TUSCALOOSA NTL (TCL)

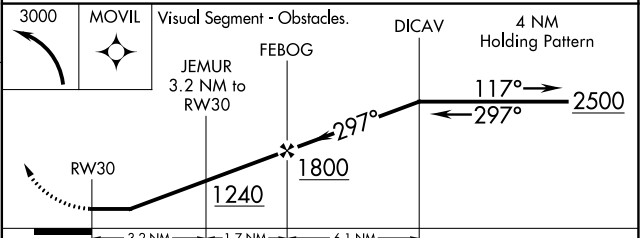
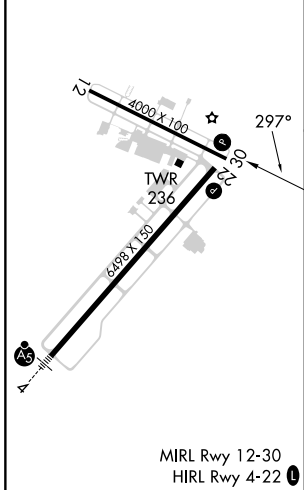
**⚠** DME/DME RNP-0.3 NA. Helicopter visibility reduction below 1 SM NA. When local altimeter setting not received, use Birmingham altimeter setting: increase all MDAs 180 feet and visibility LNAV Cats A and B ¼ SM, Cat C and D ½ SM, and Circling Cat C ¾ SM, Cat D ½ SM. Circling Rwy 12, 30 NA at night.

**⚠** MISSED APPROACH: Climbing left turn to 3000 direct MOVIL and hold.

ASOS <b>132.825</b>	BIRMINGHAM APP CON <b>120.15 269.25</b>	TUSCALOOSA TOWER ★ <b>126.3 (CTAF) 0 256.7</b>	GND CON <b>121.8 257.95</b>	CLNC DEL <b>120.775</b>	UNICOM <b>122.95</b>
------------------------	--	---	--------------------------------	----------------------------	-------------------------



ELEV 170	TDZE 170
----------	----------



CATEGORY	A	B	C	D
LNAV MDA	900-1	730 (800-1)	900-2	730 (800-2)
CIRCLING	900-1	730 (800-1)	960-2¼ 790 (800-2¼)	960-2½ 790 (800-2½)

SE-4, 22 FEB 2024 to 21 MAR 2024

SE-4, 22 FEB 2024 to 21 MAR 2024

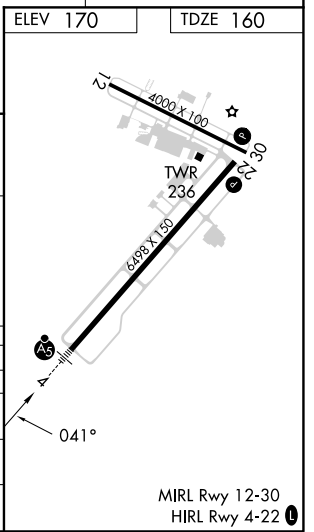
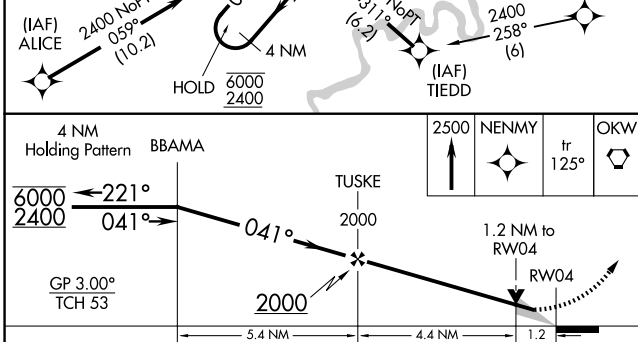
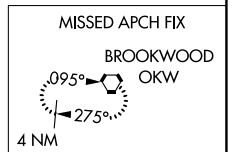
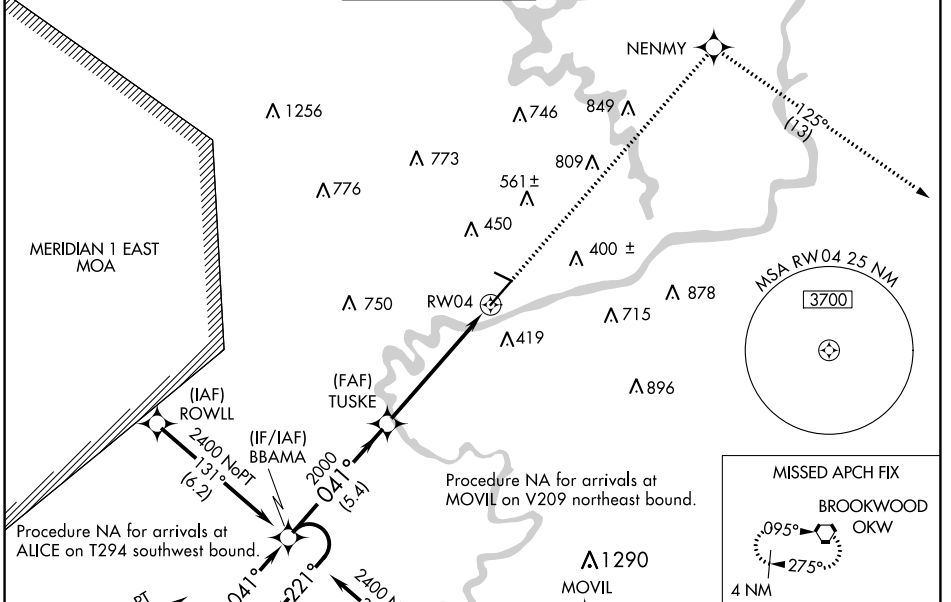
WAAS CH <b>48906</b> W04A	APP CRS <b>041°</b>	Rwy Idg TDZE Apt Elev	<b>6498</b> <b>160</b> <b>170</b>
---------------------------------	------------------------	-----------------------------	---

# RNAV (GPS) RWY 4

TUSCALOOSA NTL (TCL)

RNP APCH - GPS.	MALSR 	MISSED APPROACH: Climb to 2500 direct NENMY and on track 125° to OKW VORTAC and hold.
<p><b>▼</b> Circling Rwy 12, 30 NA at night. For uncompensated Baro-VNAV systems, LNAV/VNAV NA below -7°C or above 54°C. For inop ALS, increase LNAV/VNAV all Cats visibility to 1 1/8 SM.</p> <p><b>▲</b></p>		

ASOS <b>132.825</b>	BIRMINGHAM APP CON <b>120.15 269.25</b>	TUSCALOOSA TOWER ★ <b>126.3</b> (CTAF) <b>0 256.7</b>	GND CON <b>121.8 257.95</b>	CLNC DEL <b>120.775</b>	UNICOM <b>122.95</b>
------------------------	--	--	--------------------------------	----------------------------	-------------------------



CATEGORY	A	B	C	D
LPV DA		360-1/2	200 (200-1/2)	
LNAV/VNAV DA		575-3/4	415 (500-3/4)	
LNAV MDA	600-1/2	440 (500-1/2)	600-3/4	440 (500-3/4)
CIRCLING	720-1 550 (600-1)	800-1 630 (700-1)	960-2 1/4 790 (800-2 1/4)	960-2 1/2 790 (800-2 1/2)

SE-4, 22 FEB 2024 to 21 MAR 2024

SE-4, 22 FEB 2024 to 21 MAR 2024

TACAN LDK Chan <b>125</b> <b>(117.8)</b>	APP CRS <b>241°</b>	Rwy ldg <b>6498</b> TDZE <b>164</b> Apt Elev <b>170</b>
--	------------------------	---

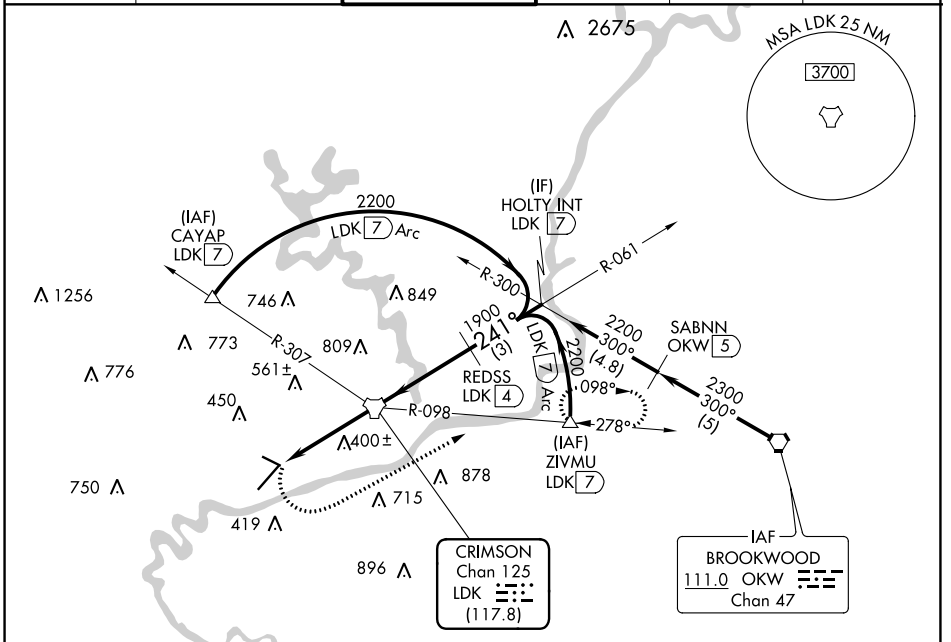
# TACAN RWY 22

TUSCALOOSA NTL (TCL)

**▼** Circling Rwy 12, 30 NA at night.  
**▲** Rwy 22 helicopter visibility reduction below  $\frac{3}{4}$  SM NA.

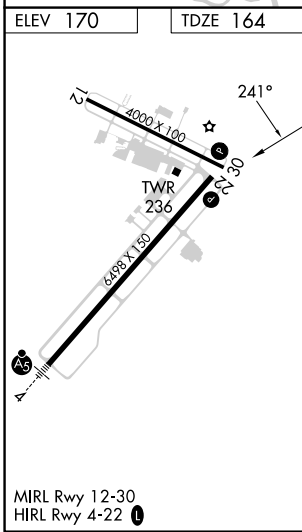
MISSED APPROACH: Climbing left turn to 2300 on heading 060° and LDK TACAN R-098 to ZIVMU/LDK 7 DME and hold.

ASOS <b>132.825</b>	BIRMINGHAM APP CON <b>120.15 269.25</b>	TUSCALOOSA TOWER ★ <b>126.3</b> (CTAF) <b>0 256.7</b>	GND CON <b>121.8 257.95</b>	CLNC DEL <b>120.775</b>	UNICOM <b>122.95</b>
------------------------	--	--	--------------------------------	----------------------------	-------------------------



SE-4, 22 FEB 2024 to 21 MAR 2024

SE-4, 22 FEB 2024 to 21 MAR 2024



2300	LDK R-098	ZIVMU	LDK TACAN	REDSS LDK 4	HOLTY INT LDK 7	2200
hdg 060°		△				
	1.8 NM	2.2 NM	4 NM	3 NM		
CATEGORY	A	B	C	D		
S-22	800-1	636 (700-1)	800-1 $\frac{3}{4}$	636 (700-1 $\frac{3}{4}$ )		
<b>C</b> CIRCLING	800-1	630 (700-1)	960-2 $\frac{1}{4}$ 790 (800-2 $\frac{1}{4}$ )	960-2 $\frac{1}{2}$ 790 (800-2 $\frac{1}{2}$ )		

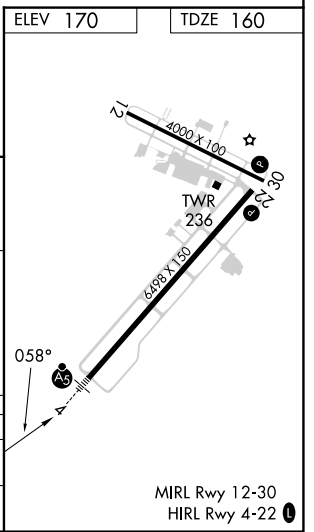
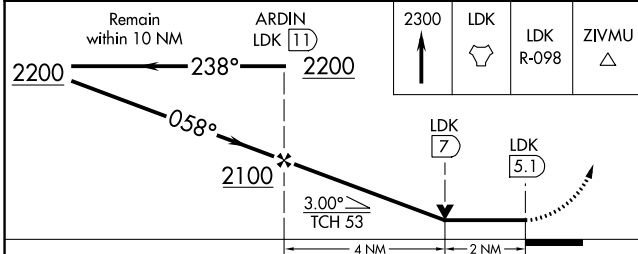
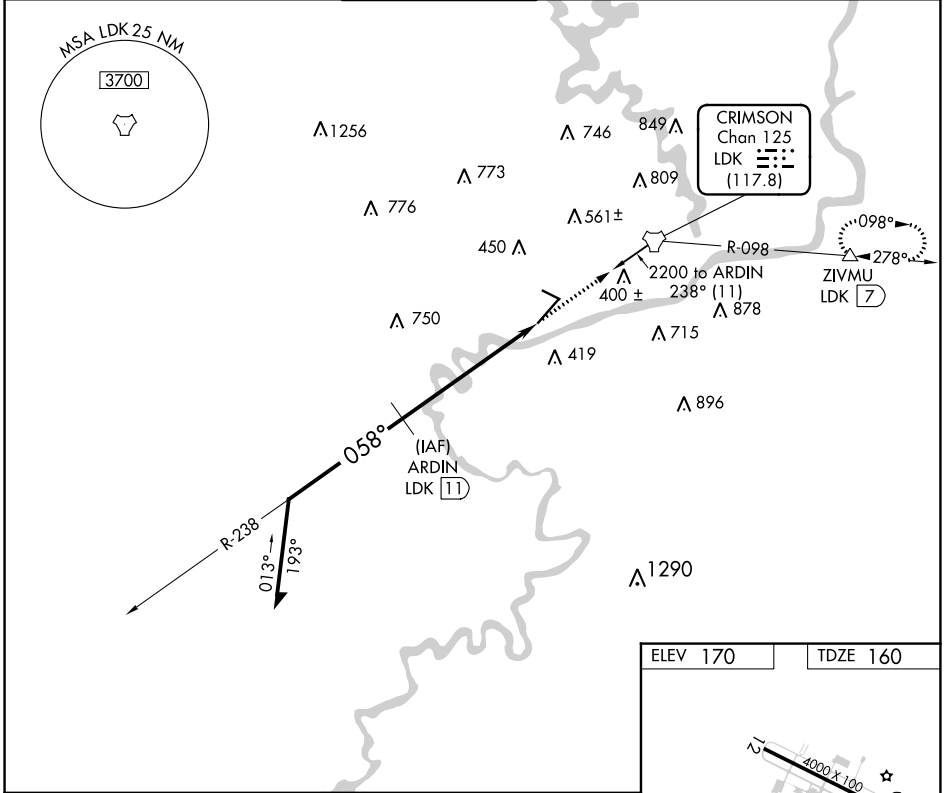
TACAN LDK Chan <b>125</b> <b>(117.8)</b>	APP CRS <b>058°</b>	Rwy ldg <b>6498</b> TDZE <b>160</b> Apt Elev <b>170</b>
---	---------------------	---

# TACAN RWY 4

TUSCALOOSA NTL (TCL)

	Circling Rwy 12, 30 NA at night. Inop table does not apply.		MISSED APPROACH: Climb to 2300 direct LDK TACAN and LDK TACAN R-098 to ZIVMU/LDK 7 DME and hold.

ASOS <b>132.825</b>	BIRMINGHAM APP CON <b>120.15 269.25</b>	TUSCALOOSA TOWER ★ <b>126.3</b> (CTAF) <b>0 256.7</b>	GND CON <b>121.8 257.95</b>	CLNC DEL <b>120.775</b>	UNICOM <b>122.95</b>
------------------------	--	--	--------------------------------	----------------------------	-------------------------



CATEGORY	A	B	C	D
S-4	840-1	680 (700-1)	840-1 $\frac{7}{8}$	680 (700-1 $\frac{7}{8}$ )
<b>C</b> CIRCLING	840-1	670 (700-1)	960-2 $\frac{1}{4}$ 790 (800-2 $\frac{1}{4}$ )	960-2 $\frac{1}{2}$ 790 (800-2 $\frac{1}{2}$ )

SE-4, 22 FEB 2024 to 21 MAR 2024

SE-4, 22 FEB 2024 to 21 MAR 2024

MIRL Rwy 12-30  
HIRL Rwy 4-22