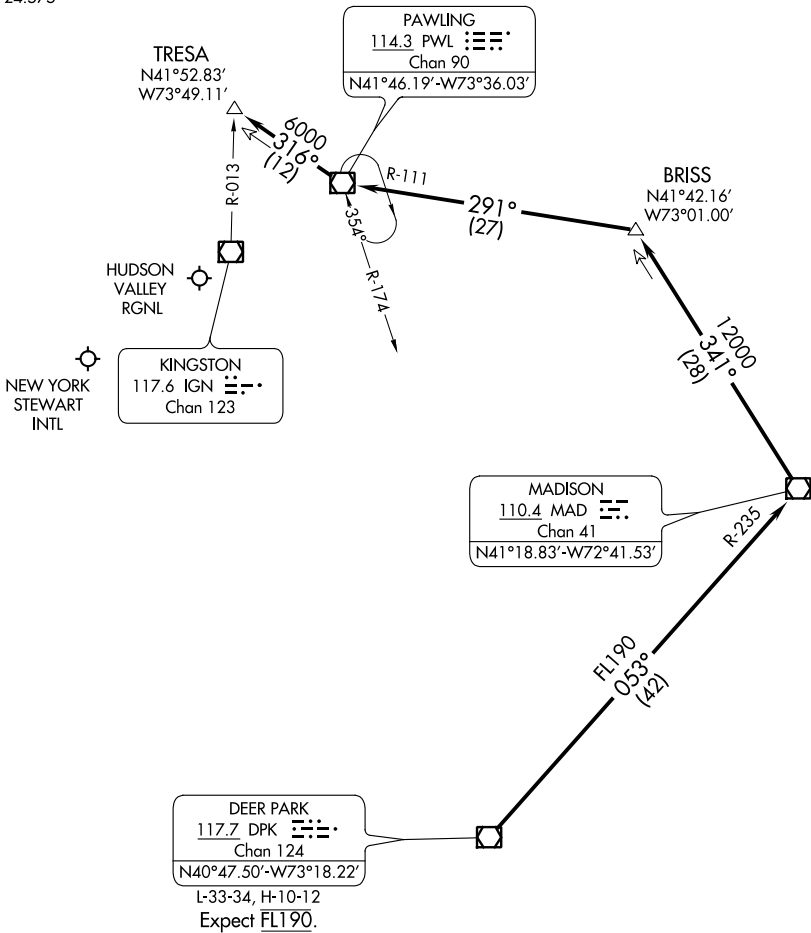


# HUDSON FOUR ARRIVAL

NEW YORK, NEW YORK

NEW YORK APP CON  
 132.75 363.1  
 POU ATIS  
 126.75  
 SWF ATIS  
 124.575



NE-2, 05 OCT 2023 to 02 NOV 2023

NE-2, 05 OCT 2023 to 02 NOV 2023

NOTE: RADAR required.

NOTE: Chart not to scale.

## ARRIVAL ROUTE DESCRIPTION

From over DPK VOR/DME on DPK R-053 and MAD R-235 to MAD VOR/DME, then on MAD R-341 to BRISS, then on PWL R-111 to PWL VOR/DME, then on PWL R-316 to TRESA. Expect RADAR vectors to final approach course.

# HUDSON FOUR ARRIVAL

NEW YORK, NEW YORK