

APP CRS 332°	Rwy Idg TDZE Apt Elev	3756 571 578
------------------------	-----------------------------	---

RNAV (GPS) RWY 32

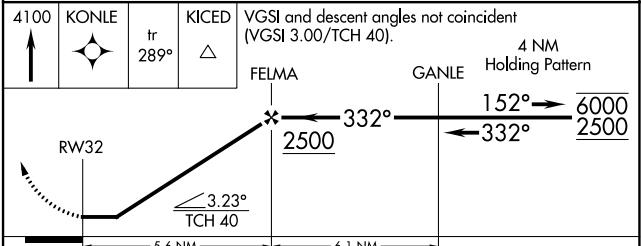
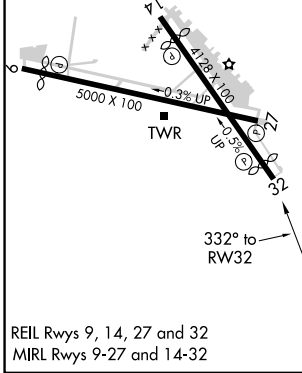
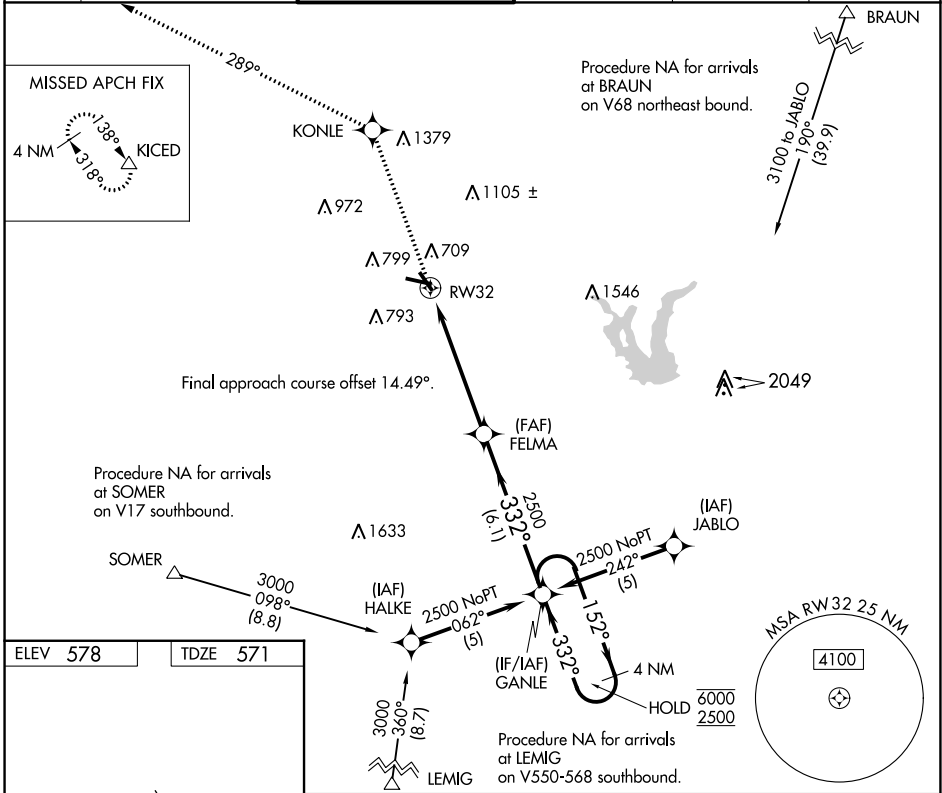
STINSON MUNI (SSF)

RNP APCH-GPS.

▼ Rwy 32 helicopter visibility reduction below 1 SM NA. Straight-in Rwy 32 NA at night, Circling Rwy 9, 14, and 32 NA at night.

MISSED APPROACH: Climb to 4100 direct KONLE and on track 289° to KICED and hold.

ATIS 128.8	SAN ANTONIO APP CON 125.7 290.225	STINSON TOWER ★ 118.2 (CTAF) 379.9	GND CON 121.7 379.9	CLNC DEL 121.7 (When twr closed)	UNICOM 122.95
----------------------	---	--	-------------------------------	---	-------------------------



CATEGORY	A	B	C	D
LNAV MDA	1020-1	449 (500-1)	1020-1 3/8 449 (500-1 3/8)	NA
CIRCLING	1040-1 462 (500-1)	1120-1 542 (600-1)	1260-2 682 (700-2)	NA

SC-3, 22 FEB 2024 to 21 MAR 2024

SC-3, 22 FEB 2024 to 21 MAR 2024

VOR SSF 108.4	APP CRS 337°	Rwy Idg 3756 TDZE 571 Apt Elev 578
-------------------------	------------------------	---

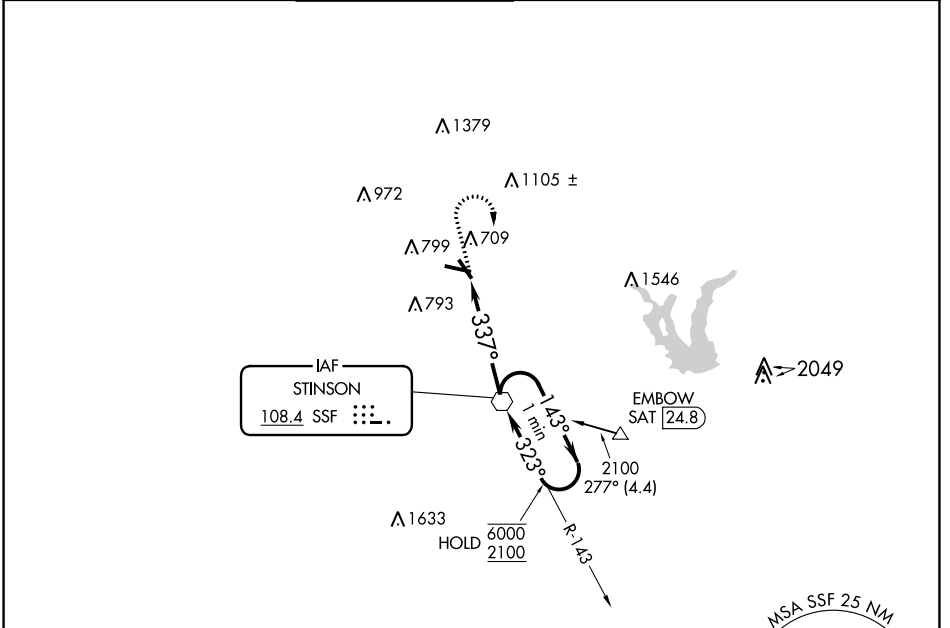
VOR RWY 32

STINSON MUNI (SSF)

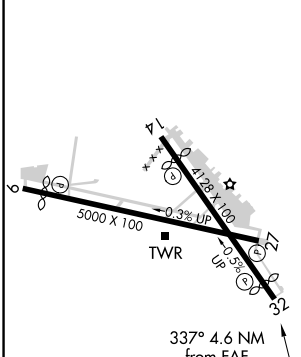
▼ Rwy 32 helicopter visibility reduction below 1 SM NA. Straight-in Rwy 32 NA at night, Circling Rwy 9, 14, and 32 NA at night.

MISSED APPROACH: Climb to 1400 then climbing right turn to 2500 direct SSF VOR and hold.

ATIS 128.8	SAN ANTONIO APP CON 125.7 290.225	STINSON TOWER* 118.2(CTAF) 379.9	GND CON 121.7 379.9	CLNC DEL 121.7 (When twr closed)	UNICOM 122.95
----------------------	---	--	-------------------------------	---	-------------------------

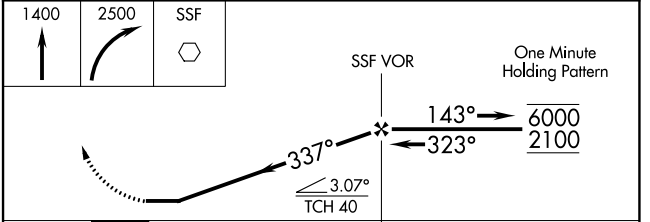


ELEV 578	TDZE 571
----------	----------



REIL Rwys 9, 14, 27 and 32
MIRL Rwys 9-27 and 14-32
FAF to MAP 4.6 NM

Knots	60	90	120	150	180
Min:Sec	4:36	3:04	2:18	1:50	1:32



CATEGORY	A	B	C	D
S-32	1020-1 449 (500-1)		1020-1 449 (500-1 3/8)	NA
CIRCLING	1040-1 462 (500-1)	1120-1 542 (600-1)	1260-2 682 (700-2)	NA

SC-3, 22 FEB 2024 to 21 MAR 2024

SC-3, 22 FEB 2024 to 21 MAR 2024