

ANAHEIM ONE DEPARTURE  
(ANAHM1.SJ) 19JUL18

JOHN WAYNE/ORANGE COUNTY (SNA)  
SANTA ANA, CALIFORNIA

(ANAHM1.SJ) 23334  
ANAHEIM ONE DEPARTURE

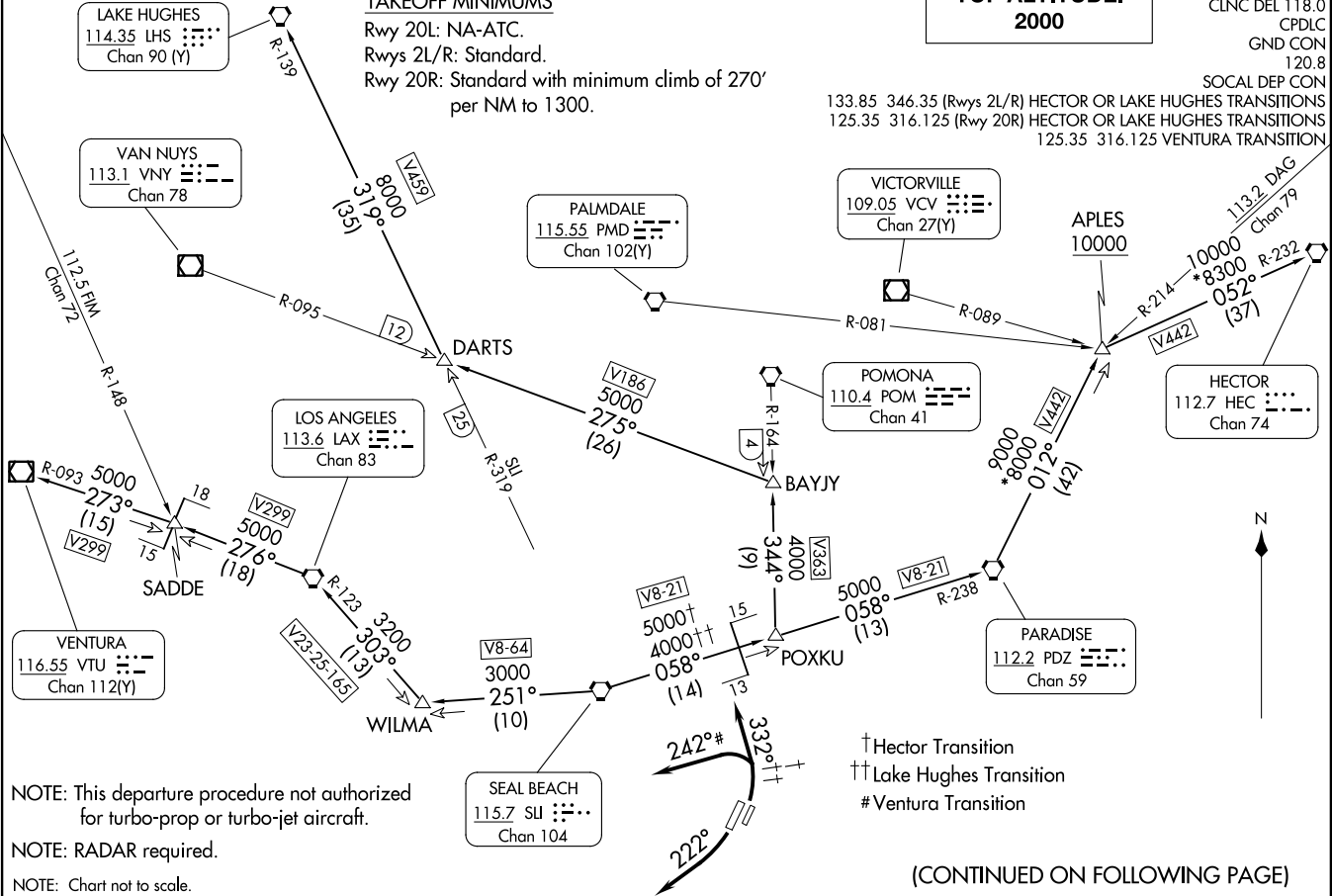
JOHN WAYNE/ORANGE COUNTY (SNA)  
SANTA ANA, CALIFORNIA  
AL-377 (FAA)

**TOP ALTITUDE:  
2000**

D-ATIS 126.0  
CLNC DEL 118.0  
CPDLC  
GND CON 120.8  
SOCAL DEP CON  
133.85 346.35 (Rwys 2L/R) HECTOR OR LAKE HUGHES TRANSITIONS  
125.35 316.125 (Rwy 20R) HECTOR OR LAKE HUGHES TRANSITIONS  
125.35 316.125 VENTURA TRANSITION

TAKEOFF MINIMUMS

Rwy 20L: NA-ATC.  
Rwys 2L/R: Standard.  
Rwy 20R: Standard with minimum climb of 270' per NM to 1300.



NOTE: This departure procedure not authorized for turbo-prop or turbo-jet aircraft.  
NOTE: RADAR required.  
NOTE: Chart not to scale.

† Hector Transition  
†† Lake Hughes Transition  
# Ventura Transition

(CONTINUED ON FOLLOWING PAGE)



DEPARTURE ROUTE DESCRIPTION

TAKEOFF RUNWAY 20R: Turn right heading 222° for vectors to SLI VORTAC, thence. . . .

TAKEOFF RUNWAYS 2L/R (HECTOR or LAKE HUGHES TRANSITION): Turn left heading 332° for vectors to SLI VORTAC, thence. . . .

TAKEOFF RUNWAYS 2L/R (VENTURA TRANSITION): Turn left heading 242° for vectors to LAX VORTAC, thence. . . .

. . . .on (transition) or (assigned route). Maintain 2000 and expect filed altitude 10 minutes after departure.

HECTOR TRANSITION (ANAHM1.HEC): From over SLI VORTAC on SLI R-058 and PDZ R-238 to PDZ VORTAC, then on PDZ R-012 to APLES, then on HEC R-232 to HEC VORTAC.

LAKE HUGHES TRANSITION (ANAHM1.LHS): From over SLI VORTAC on SLI R-058 and PDZ R-238 to POXKU, then on POM R-164 to BAYJY, then on VNY R-095 to DARTS, then on LHS R-139 to LHS VORTAC.

VENTURA TRANSITION (ANAHM1.VTU): From over SLI VORTAC on SLI R-251 to WILMA, then on LAX R-123 to LAX VORTAC, then on LAX R-276 to SADDE, then on VTU R-093 to VTU VOR/DME.

SW-3, 22 FEB 2024 to 21 MAR 2024

SW-3, 22 FEB 2024 to 21 MAR 2024

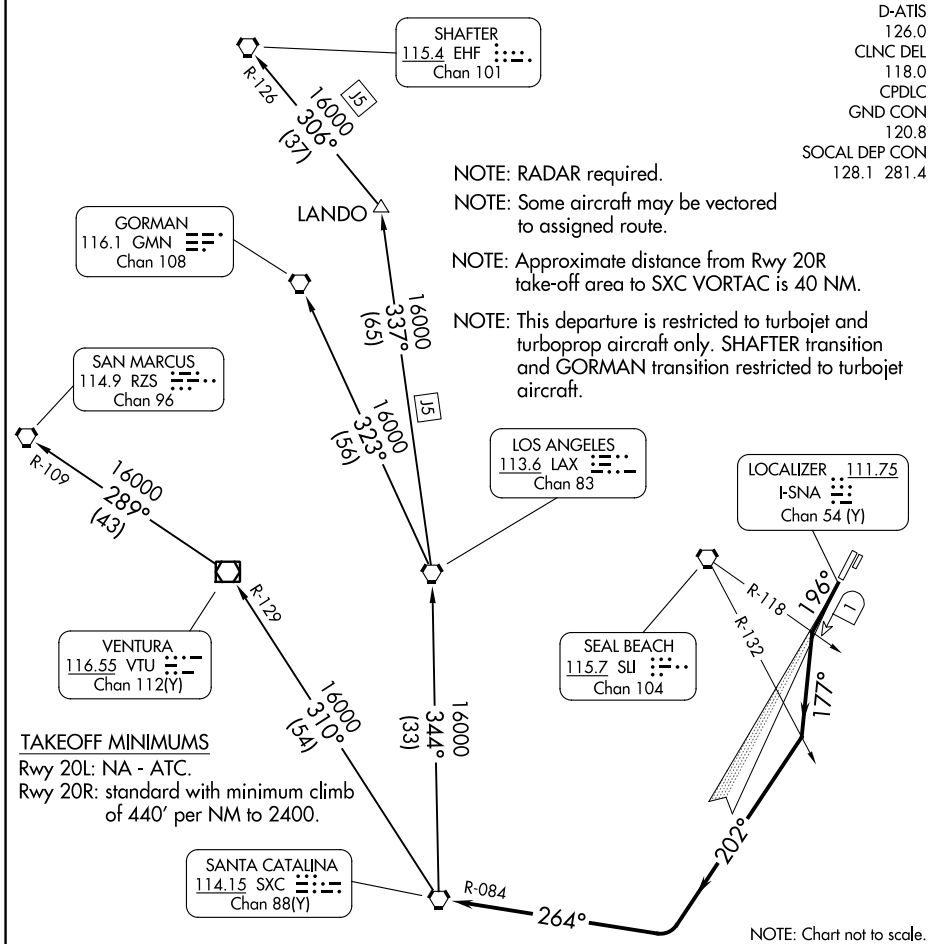
D-ATIS 126.0  
CLNC DEL 118.0  
CPDLC  
GND CON 120.8  
SOCAL DEP CON 128.1 281.4

NOTE: RADAR required.

NOTE: Some aircraft may be vectored to assigned route.

NOTE: Approximate distance from Rwy 20R take-off area to SXC VORTAC is 40 NM.

NOTE: This departure is restricted to turbojet and turboprop aircraft only. SHAFTER transition and GORMAN transition restricted to turbojet aircraft.



**TAKEOFF MINIMUMS**

Rwy 20L: NA - ATC.  
Rwy 20R: standard with minimum climb of 440' per NM to 2400.

NOTE: Chart not to scale.

**DEPARTURE ROUTE DESCRIPTION**

**TAKEOFF RUNWAY 20R:** Climb heading 196° or I-SNA localizer south course to I-SNA 1 DME fix or SLI R-118, turn left heading 177°, cross SLI R-132 then turn right heading 202°, intercept and proceed via SXC R-084 to SXC VORTAC, thence . . . .

. . . . via (transition) or (assigned route). Expect filed altitude ten minutes after departure.

**GORMAN TRANSITION (CHANL3.GMN):** From over SXC VORTAC on SXC R-344 to LAX VORTAC, then on LAX R-323 to GMN VORTAC.

**SAN MARCUS TRANSITION (CHANL3.RZS):** From over SXC VORTAC on SXC R-310 and VTU R-129 to VTU VOR/DME, then on VTU R-289 and RZS R-109 to RZS VORTAC.

**SHAFTER TRANSITION (CHANL3.EHF):** From over SXC VORTAC on SXC R-344 to LAX VORTAC, then on LAX R-337 to LANDO INT, then on EHF R-126 to EHF VORTAC.

EL TORO FOUR DEPARTURE  
(ELB4,ELB) 08JAN15

JOHN WAYNE/ORANGE COUNTY (SNA)  
SANTA ANA, CALIFORNIA

D-ATIS 126.0  
CLNC DEL 118.0  
CPDLC  
GND CON  
120.8  
JOHN WAYNE TOWER\*  
126.8 343.625  
SOCAL DEP CON  
133.85 346.35

EL TORO  
117.2 ELB  
Chan 119

SANTA CATALINA  
114.15 SXC  
Chan 88(Y)

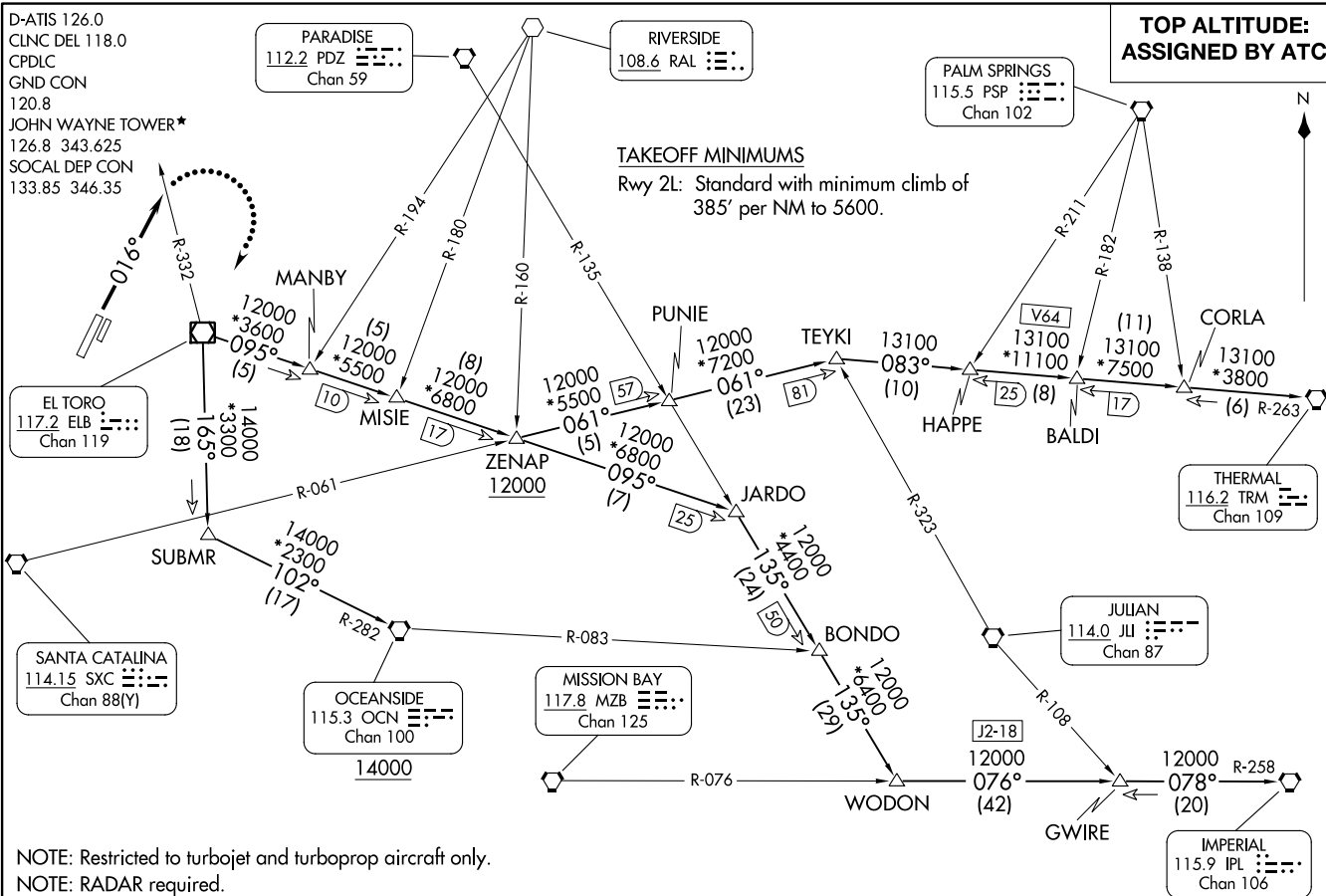
PARADISE  
112.2 PDZ  
Chan 59

RIVERSIDE  
108.6 RAL

PALM SPRINGS  
115.5 PSP  
Chan 102

TOP ALTITUDE:  
ASSIGNED BY ATC

TAKEOFF MINIMUMS  
Rwy 2L: Standard with minimum climb of  
385' per NM to 5600.



NOTE: Restricted to turbojet and turboprop aircraft only.  
NOTE: RADAR required.  
NOTE: Chart not to scale.

(CONTINUED ON FOLLOWING PAGE)

EL TORO FOUR DEPARTURE  
(ELB4,ELB) 23334

JOHN WAYNE/ORANGE COUNTY (SNA)  
SANTA ANA, CALIFORNIA  
AL-377 (FAA)



DEPARTURE ROUTE DESCRIPTION

TAKEOFF RUNWAY 2L: Climb heading 016° for vectors to ELB VOR/DME, thence . . . .  
. . . . (transition) or (assigned route). Expect filed altitude ten minutes after departure.

LOST COMMUNICATIONS: If not in contact with departure control by ELB R-332,  
turn right direct ELB VOR/DME, climb to 7000 and proceed on assigned transition  
or route. Climb to filed altitude ten minutes after departure.

IMPERIAL TRANSITION (ELB4.IPL): From over ELB VOR/DME on ELB R-095  
to JARDO, then on PDZ R-135 to WODON, then on MZB R-076 and IPL R-258  
to GWIRE, then on IPL R-258 to IPL VORTAC.

OCEANSIDE TRANSITION (ELB4.OCN): From over ELB VOR/DME on ELB R-165  
to SUBMR, then on OCN R-282 to OCN VORTAC.

THERMAL TRANSITION (ELB4.TRM): From over ELB VOR/DME on ELB R-095  
to ZENAP, then on SXC R-061 to TEYKI, then on TRM R-263 to TRM VORTAC.

SW-3, 22 FEB 2024 to 21 MAR 2024

SW-3, 22 FEB 2024 to 21 MAR 2024

(FINZZ3.FINZZ) 22251

# FINZZ THREE DEPARTURE (RNAV)

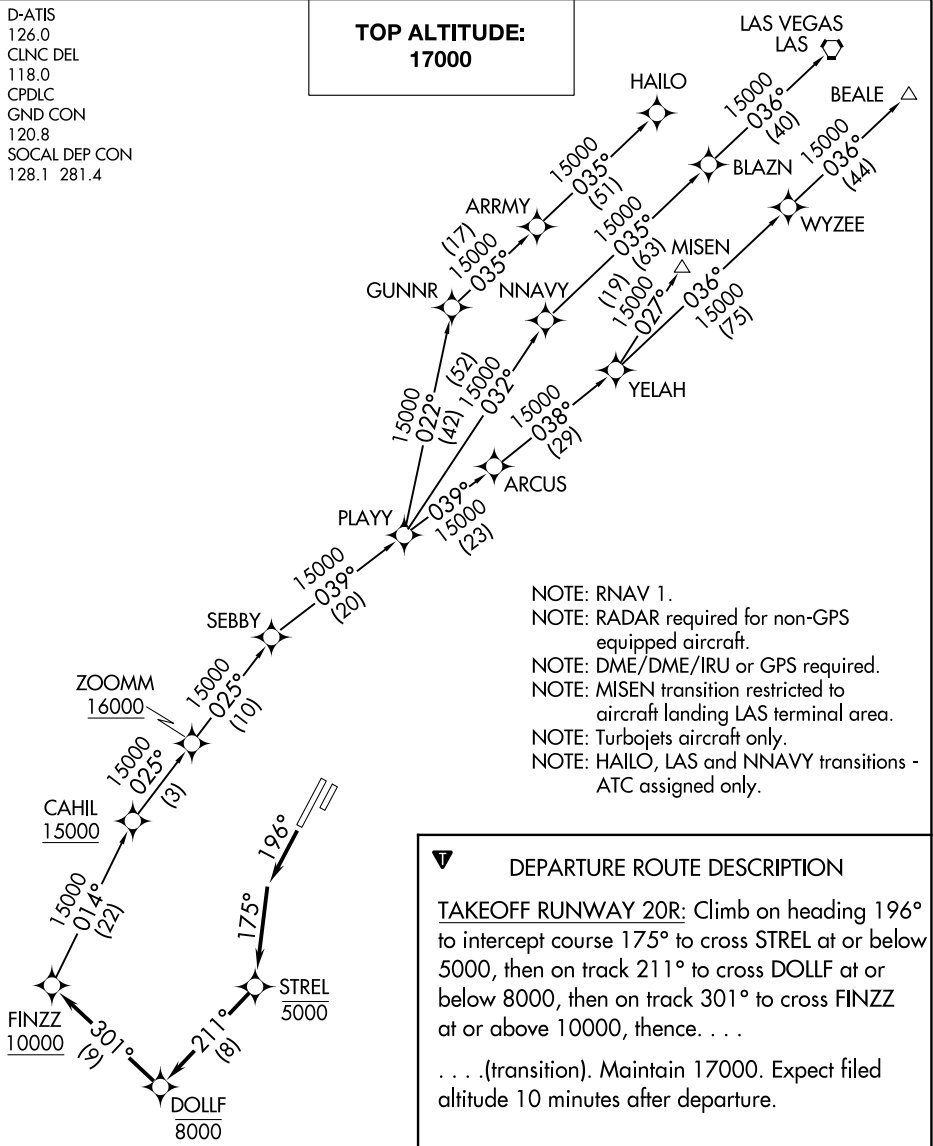
JOHN WAYNE/ORANGE COUNTY (SNA)

AL-377 (FAA)

SANTA ANA, CALIFORNIA

D-ATIS  
126.0  
CLNC DEL  
118.0  
CPDLC  
GND CON  
120.8  
SOCAL DEP CON  
128.1 281.4

**TOP ALTITUDE:  
17000**



- NOTE: RNAV 1.
- NOTE: RADAR required for non-GPS equipped aircraft.
- NOTE: DME/DME/IRU or GPS required.
- NOTE: MISEN transition restricted to aircraft landing LAS terminal area.
- NOTE: Turbojets aircraft only.
- NOTE: HAILO, LAS and NNAVY transitions - ATC assigned only.

## DEPARTURE ROUTE DESCRIPTION

**TAKEOFF RUNWAY 20R:** Climb on heading 196° to intercept course 175° to cross STREL at or below 5000, then on track 211° to cross DOLLF at or below 8000, then on track 301° to cross FINZZ at or above 10000, thence. . . .

. . . (transition). Maintain 17000. Expect filed altitude 10 minutes after departure.

- BEALE TRANSITION (FINZZ3.BEALE)
- HAILO TRANSITION (FINZZ3.HAILO)
- LAS VEGAS TRANSITION (FINZZ3.LAS)
- MISEN TRANSITION (FINZZ3.MISEN)
- NNAVY TRANSITION (FINZZ3.NNAVY)

### TAKEOFF MINIMUMS

Rwy 20R: Standard with a minimum climb of 320' per NM to 560.

NOTE: Chart not to scale.

# FINZZ THREE DEPARTURE (RNAV)

(FINZZ3.FINZZ) 10SEP20

SANTA ANA, CALIFORNIA

JOHN WAYNE/ORANGE COUNTY (SNA)

SW-3, 22 FEB 2024 to 21 MAR 2024

SW-3, 22 FEB 2024 to 21 MAR 2024

HAWWC THREE DEPARTURE (RNAV)  
(HAWWC3, HAWWC) 19Jul18

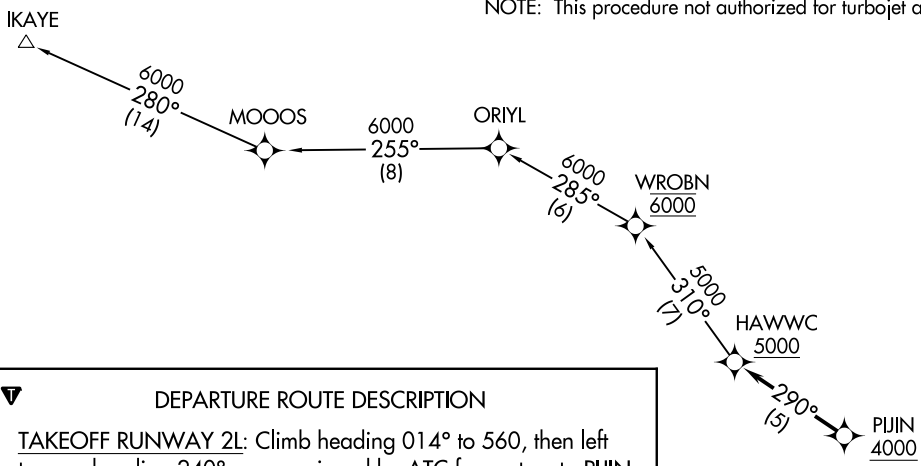
(HAWWC3, HAWWC) 22251  
HAWWC THREE DEPARTURE (RNAV)

JOHN WAYNE/ORANGE COUNTY (SNA)  
SANTA ANA, CALIFORNIA  
AL-377 (FAA)

D-ATIS 126.0  
CLNC DEL 118.0  
CPDLC 120.8  
GND CON 126.8 343.625  
SOCAL DEP CON 125.35 316.125  
JOHN WAYNE TOWER\* 126.8 343.625  
SOCAL DEP CON 125.35 316.125

**TOP ALTITUDE:**  
**6000**

NOTE: RADAR required.  
NOTE: RNAV 1.  
NOTE: DME/DME/IRU or GPS required.  
NOTE: This procedure not authorized for turbojet aircraft.



**DEPARTURE ROUTE DESCRIPTION**

**TAKEOFF RUNWAY 2L:** Climb heading 014° to 560, then left turn on heading 240° or as assigned by ATC for vectors to PIJIN, cross PIJIN at or above 4000, then on track 290° to cross HAWWC at or above 5000, thence . . . .

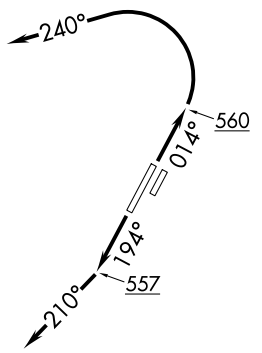
**TAKEOFF RUNWAY 20R:** Climb heading 194° to 557, then on heading 210° or as assigned by ATC for vectors to PIJIN, cross PIJIN at or above 4000, then on track 290° to cross HAWWC at or above 5000, thence . . . .

. . . . on (transition). Maintain 6000. Expect higher altitude 10 minutes after departure.

**IKAYE TRANSITION (HAWWC3.IKAYE)**

**TAKEOFF MINIMUMS**  
Rwys 2R, 20L: NA-ATC.  
Rwy 2L: Standard.  
Rwy 20R: Standard with minimum climb of 270' per NM to 1300.

NOTE: Chart not to scale.



JOHN WAYNE/ORANGE COUNTY (SNA)  
SANTA ANA, CALIFORNIA

# HHERO THREE DEPARTURE (RNAV) AL-377 (FAA)

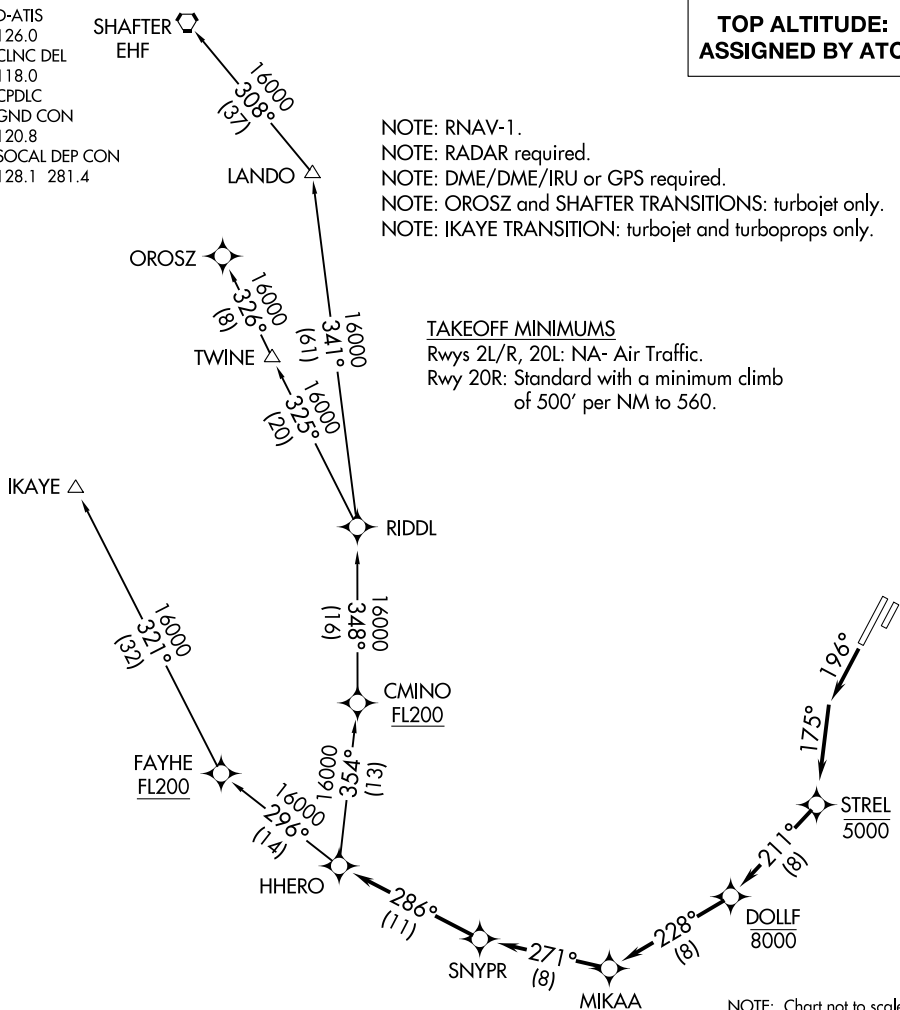
D-ATIS  
126.0  
CLNC DEL  
118.0  
CPDLC  
GND CON  
120.8  
SOCAL DEP CON  
128.1 281.4

**TOP ALTITUDE:  
ASSIGNED BY ATC**

NOTE: RNAV-1.  
NOTE: RADAR required.  
NOTE: DME/DME/IRU or GPS required.  
NOTE: OROSZ and SHAFTER TRANSITIONS: turbojet only.  
NOTE: IKAYE TRANSITION: turbojet and turboprops only.

### TAKEOFF MINIMUMS

Rwys 2L/R, 20L: NA- Air Traffic.  
Rwy 20R: Standard with a minimum climb  
of 500' per NM to 560.



SW-3, 22 FEB 2024 to 21 MAR 2024

SW-3, 22 FEB 2024 to 21 MAR 2024

NOTE: Chart not to scale.

### DEPARTURE ROUTE DESCRIPTION

TAKEOFF RUNWAY 20R: Climb heading 196° to intercept course 175° to cross STREL at or below 5000, then on track 211° to cross DOLLF at or below 8000, then on depicted route to HHERO, thence. . . .

. . . .(transition). Maintain altitude assigned by ATC. Expect filed altitude 10 minutes after departure.

IKAYE TRANSITION (HHERO3.IKAYE)

OROSZ TRANSITION (HHERO3.OROSZ)

SHAFTER TRANSITION (HHERO3.EHF)

## HHERO THREE DEPARTURE (RNAV)

(HHERO3.HHERO) 19JUL18



(HOBOW3.HOBOW) 22251

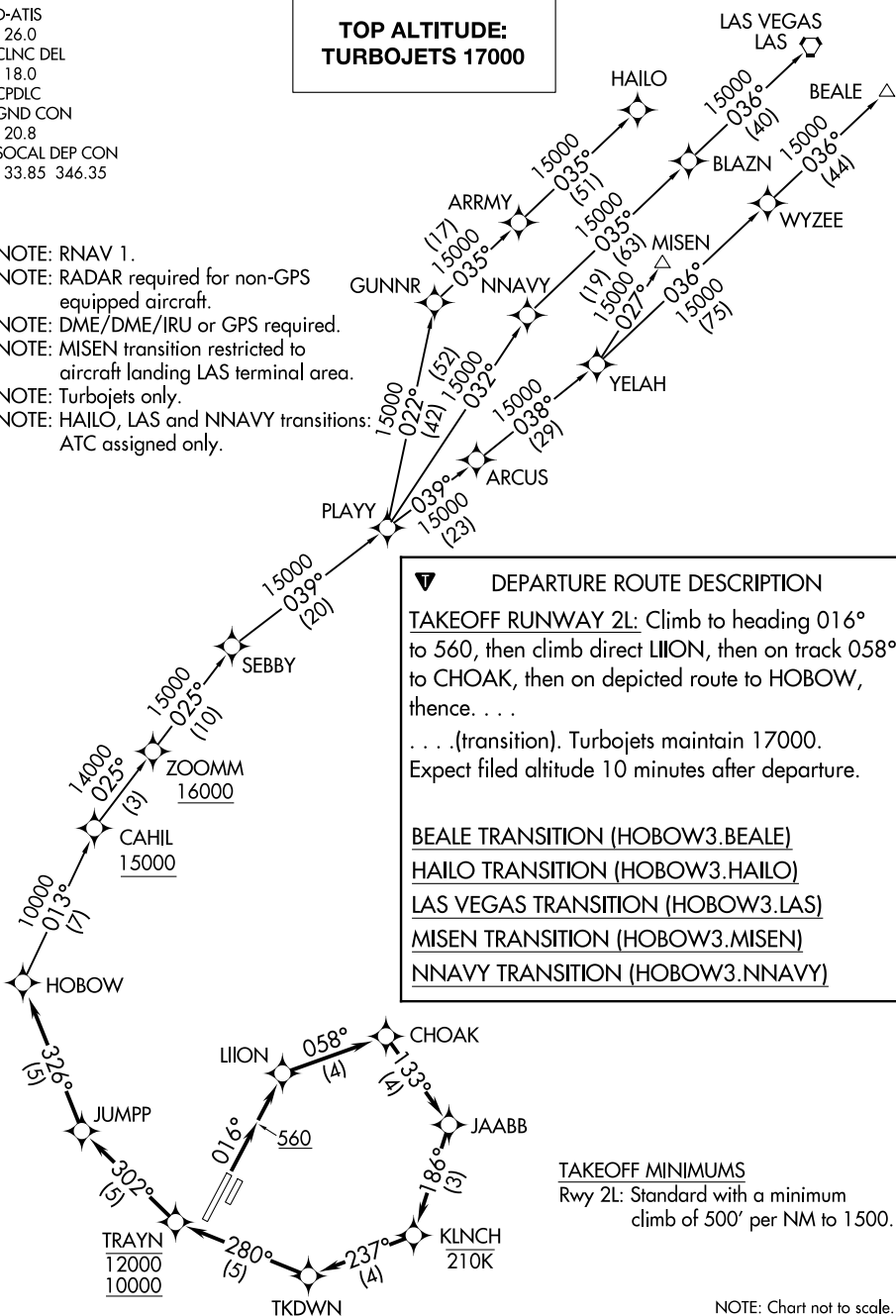
# HOBOW THREE DEPARTURE (RNAV)

JOHN WAYNE/ORANGE COUNTY (SNA)  
SANTA ANA, CALIFORNIA

D-ATIS  
126.0  
CLNC DEL  
118.0  
CPDLC  
GND CON  
120.8  
SOCAL DEP CON  
133.85 346.35

**TOP ALTITUDE:  
TURBOJET'S 17000**

- NOTE: RNAV 1.
- NOTE: RADAR required for non-GPS equipped aircraft.
- NOTE: DME/DME/IRU or GPS required.
- NOTE: MISEN transition restricted to aircraft landing LAS terminal area.
- NOTE: Turbojets only.
- NOTE: HAILO, LAS and NNAVY transitions: ATC assigned only.



**DEPARTURE ROUTE DESCRIPTION**

TAKEOFF RUNWAY 2L: Climb to heading 016° to 560, then climb direct LIION, then on track 058° to CHOAK, then on depicted route to HOBOW, thence. . . .

. . . (transition). Turbojets maintain 17000. Expect filed altitude 10 minutes after departure.

BEALE TRANSITION (HOBOW3.BEALE)  
HAILO TRANSITION (HOBOW3.HAILO)  
LAS VEGAS TRANSITION (HOBOW3.LAS)  
MISEN TRANSITION (HOBOW3.MISEN)  
NNAVY TRANSITION (HOBOW3.NNAVY)

**TAKEOFF MINIMUMS**  
 Rwy 2L: Standard with a minimum climb of 500' per NM to 1500.

NOTE: Chart not to scale.

## HOBOW THREE DEPARTURE (RNAV)

(HOBOW3.HOBOW) 10SEP20

SANTA ANA, CALIFORNIA  
JOHN WAYNE/ORANGE COUNTY (SNA)

SW-3, 22 FEB 2024 to 21 MAR 2024

SW-3, 22 FEB 2024 to 21 MAR 2024

IRVINE FIVE DEPARTURE  
(IRV5, IRV) 28FEB19

JOHN WAYNE/ORANGE COUNTY (SN/A)  
SANTA ANA, CALIFORNIA

D-ATIS  
126.0  
CLNC DEL  
118.0  
CPDLC  
GND CON  
120.8  
SOCAL DEP CON  
133.85 346.35

**TOP ALTITUDE:  
ASSIGNED BY ATC**

SHAFTER  
115.4 EHF  
Chan 101

NOTE: Restricted to jet and turboprop aircraft only. SHAFTER and GORMAN restricted to jet aircraft only.  
NOTE: RADAR required.

DAGGETT  
113.2 DAG  
Chan 79

PARADISE  
112.2 PDZ  
Chan 59

EL TORO  
117.2 ELB  
Chan 119

SEAL BEACH  
115.7 SLI  
Chan 104  
15000

LOS ANGELES  
113.6 LAX  
Chan 83

SANTA CATALINA  
114.15 SXC  
Chan 88(Y)  
16000

GORMAN  
116.1 GMN  
Chan 108

SAN MARCUS  
114.9 RZS  
Chan 96

VENTURA  
116.55 VTU  
Chan 112(Y)



NOTE: Chart not to scale.

(CONTINUED ON FOLLOWING PAGE)

TAKEOFF MINIMUMS

Rwy 2L, Standard with minimum climb of 385' per NM to 5600.

(IRV5, IRV) 23334  
IRVINE FIVE DEPARTURE

AL-377 (FAA)

JOHN WAYNE/ORANGE COUNTY (SN/A)  
SANTA ANA, CALIFORNIA



DEPARTURE ROUTE DESCRIPTION

TAKEOFF RUNWAY 2L: Climb heading 016° to 3000, continue climb to assigned altitude on assigned heading for RADAR vectors to ELB VOR/DME R-215.  
Thence . . . .

. . . . on (transition) or assigned route. Maintain ATC assigned altitude, expect filed altitude ten minutes after departure.

LOST COMMUNICATIONS: If not in contact with departure control by ELB R-332, turn right direct ELB VOR/DME, climb to 7000 and proceed via assigned transition or route. Climb to filed altitude ten minutes after departure.

DAGGETT TRANSITION (IRV5.DAG): From over ELB VOR/DME on ELB R-215 and SLI R-148 to SLI VORTAC, then on SLI R-022 to POM VORTAC, then on POM R-033 and DAG R-214 to DAG VORTAC.

GORMAN TRANSITION (IRV5.GMN): From over ELB VOR/DME on ELB R-215 and SXC R-055 to SXC VORTAC, then on SXC R-344 to LAX VORTAC, then on LAX R-323 to GMN VORTAC.

SAN MARCUS TRANSITION (IRV5.RZS): From over ELB VOR/DME on ELB R-215 and SXC R-055 to SXC VORTAC, then on SXC R-310 and VTU R-129 to VTU VOR/DME, then on VTU R-289 and RZS R-109 to RZS VORTAC.

SEAL BEACH TRANSITION (IRV5.SLI): From over ELB VOR/DME on ELB R-215 and on SLI R-148 to SLI VORTAC.

SHAFTER TRANSITION (IRV5.EHF): From over ELB VOR/DME on ELB R-215 and SXC R-055 to SXC VORTAC, then on SXC R-344 to LAX VORTAC, then on LAX R-337 and EHF R-126 to EHF VORTAC.

SW-3, 22 FEB 2024 to 21 MAR 2024

SW-3, 22 FEB 2024 to 21 MAR 2024

MIKAA ONE DEPARTURE (RNAV)  
(MIKAA1 .MIKAA) 27APR17

SANTA ANA, CALIFORNIA  
JOHN WAYNE/ORANGE COUNTY (SNTA)

### DEPARTURE ROUTE DESCRIPTION

TAKEOFF RUNWAY 2L: Climb heading 016° to 560, then direct LIION, then on track 058° to CHOAK, then on depicted route to MIKAA thence. . . .

. . . . (transition). Maintain 14000, expect filed altitude within 10 minutes of departure.

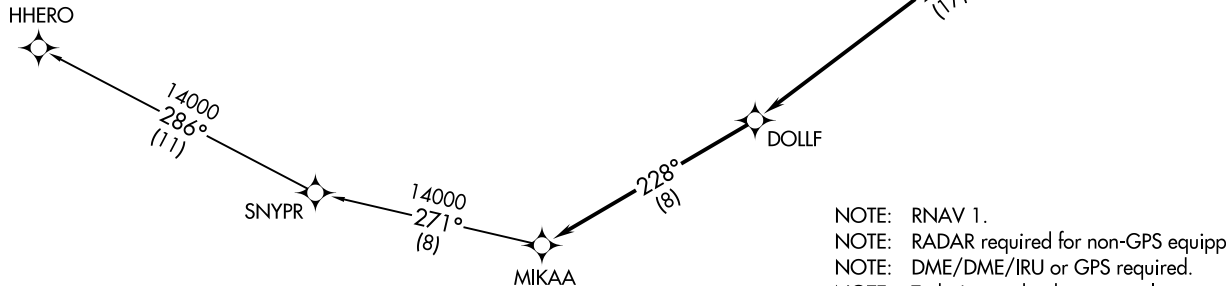
HHERO TRANSITION (MIKAA1.HHERO)

### TAKEOFF MINIMUMS

Rwy 2L: Standard with a minimum climb of 500' per NM to 1500.

**TOP ALTITUDE:  
14000**

D-ATIS 126.0  
CLNC DEL 118.0  
CPDLC  
GND CON 120.8  
SOCAL DEP CON 133.85 346.35



- NOTE: RNAV 1.
- NOTE: RADAR required for non-GPS equipped aircraft.
- NOTE: DME/DME/IRU or GPS required.
- NOTE: Turbojets and turboprops only.

NOTE: Chart not to scale.

(MIKAA1 .MIKAA) 22251  
MIKAA ONE DEPARTURE (RNAV)

AL-377 (FAA)  
JOHN WAYNE/ORANGE COUNTY (SNTA)  
SANTA ANA, CALIFORNIA

(MUSEL8.MUSEL) 23334

# MUSEL EIGHT DEPARTURE

AL-377 (FAA)

JOHN WAYNE/ORANGE COUNTY (SNA)  
SANTA ANA, CALIFORNIA

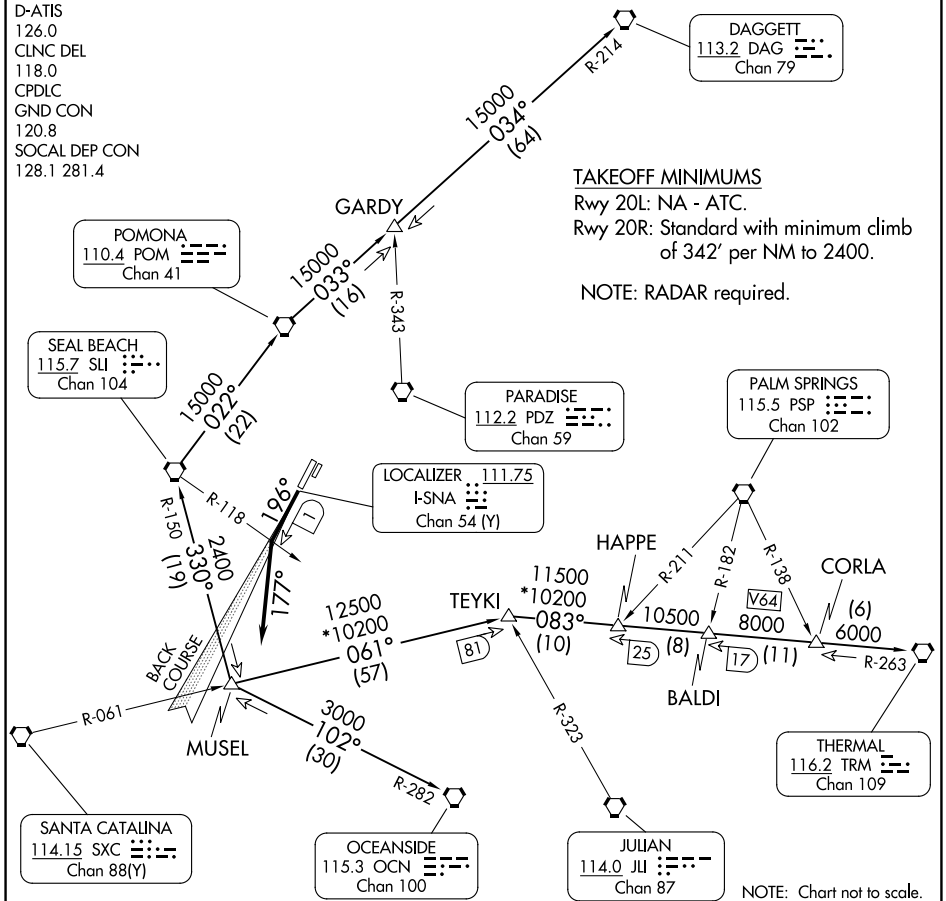
D-ATIS  
126.0  
CLNC DEL  
118.0  
CPDLC  
GND CON  
120.8  
SOCAL DEP CON  
128.1 281.4

DAGGETT  
113.2 DAG  
Chan 79

### TAKEOFF MINIMUMS

Rwy 20L: NA - ATC.  
Rwy 20R: Standard with minimum climb  
of 342' per NM to 2400.

NOTE: RADAR required.



SW-3, 22 FEB 2024 to 21 MAR 2024

SW-3, 22 FEB 2024 to 21 MAR 2024

NOTE: Chart not to scale.

## DEPARTURE ROUTE DESCRIPTION

**TAKEOFF RUNWAY 20R:** Climb heading 196° or I-SNA localizer south course to I-SNA 1 DME fix or SLI R-118, turn left heading 177° for vectors to MUSEL INT.

Thence . . . .

. . . . on (transition) or (assigned route). Expect filed altitude ten minutes after departure.

**DAGGETT TRANSITION (MUSEL8.DAG):** From over MUSEL INT on SLI R-150 to SLI VORTAC, then on SLI R-022 to POM VORTAC, then on POM R-033 to GARDY INT and on DAG R-214 to DAG VORTAC.

**OCEANSIDE TRANSITION (MUSEL8.OCN):** From over MUSEL INT on OCN R-282 to OCN VORTAC.

**SEAL BEACH TRANSITION (MUSEL8.SLI):** From over MUSEL INT on SLI R-150 to SLI VORTAC.

**THERMAL TRANSITION (MUSEL8.TRM):** From over MUSEL INT on SXC R-061 to TEYKI INT and TRM R-263 to TRM VORTAC.

# MUSEL EIGHT DEPARTURE

(MUSEL8.MUSEL) 10NOV16

SANTA ANA, CALIFORNIA  
JOHN WAYNE/ORANGE COUNTY (SNA)

**TOP ALTITUDE:  
13000**

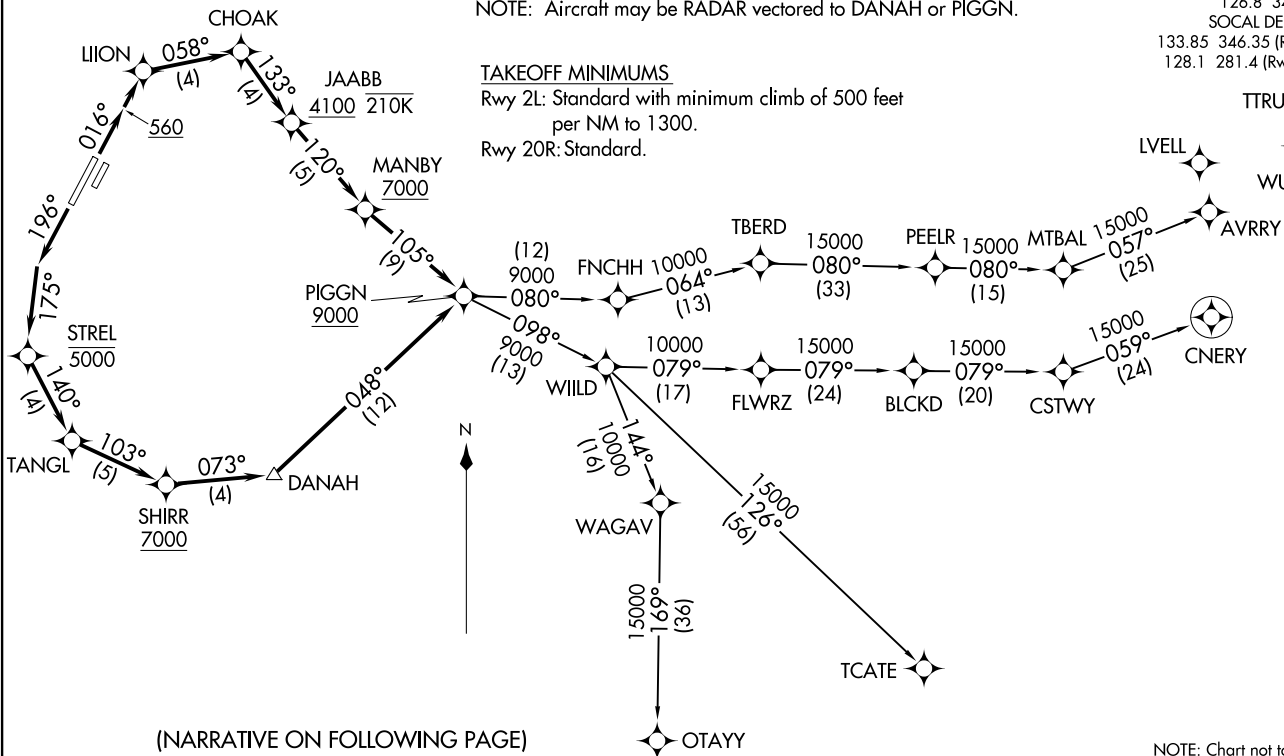
- NOTE: RADAR required.
- NOTE: RNAV-1.
- NOTE: DME/DME/IRU or GPS required.
- NOTE: Turbojet and turboprop only.
- NOTE: Parachute jumping all hours, 14000' and below, north of route between PIGGN and FNCHH.
- NOTE: Aircraft may be RADAR vectored to DANAH or PIGGN.

**TAKEOFF MINIMUMS**  
 Rwy 2L: Standard with minimum climb of 500 feet per NM to 1300.  
 Rwy 20R: Standard.

D-ATIS 126.0  
 CLNC DEL 118.0  
 CPDLC  
 GND CON 120.8  
 JOHN WAYNE TOWER \* 126.8 343.625  
 SOCAL DEP CON 133.85 346.35 (Rwy 2L)  
 128.1 281.4 (Rwy 20R)

PIGGN THREE DEPARTURE (RNAV)  
(PIGGN3.PIGGN) 24MAR22

SANTA ANA, CALIFORNIA  
JOHN WAYNE/ORANGE COUNTY (SNA)



TTRUE ✦  
 WURMO ✦

(PIGGN3.PIGGN) 22251  
PIGGN THREE DEPARTURE (RNAV)

JOHN WAYNE/ORANGE COUNTY (SNA)  
SANTA ANA, CALIFORNIA  
AI-377 (FAA)

(NARRATIVE ON FOLLOWING PAGE)

NOTE: Chart not to scale.



DEPARTURE ROUTE DESCRIPTION

TAKEOFF RUNWAY 2L: Climb on heading 016° to 560, then direct LIION, then on track 058° to CHOAK, then on track 133° to cross JAABB at or above 4100 and at or below 210K, then on track 120° to cross MANBY at or above 7000, then on track 105° to cross PIGGN at or above 9000, thence. . . .

TAKEOFF RUNWAY 20R: Climb on heading 196° to intercept course 175° to cross STREL at or below 5000, then on track 140° to TANGL, then on track 103° to cross SHIRR at or above 7000, then on track 073° to DANAH, then on track 048° to cross PIGGN at or above 9000, thence. . . .

. . . . on (transition) maintain 13000. Expect filed altitude 10 minutes after departure.

AVRRY TRANSITION (PIGGN3.AVRRY)

CNERY TRANSITION (PIGGN3.CNERY)

OTAYY TRANSITION (PIGGN3.OTAYY)

TCATE TRANSITION (PIGGN3.TCATE)

SW-3, 22 FEB 2024 to 21 MAR 2024

SW-3, 22 FEB 2024 to 21 MAR 2024

STAY FOUR DEPARTURE (RNAV)  
(STAY4.STAY) 24MAR22

SANTA ANA, CALIFORNIA  
JOHN WAYNE/ORANGE COUNTY (SNA)

D-ATIS  
126.0  
CLNC DEL  
118.0  
CPDLC  
GND CON  
120.8  
JOHN WAYNE TOWER\*  
126.8 343.625  
SOCAL DEP CON  
128.1 281.4

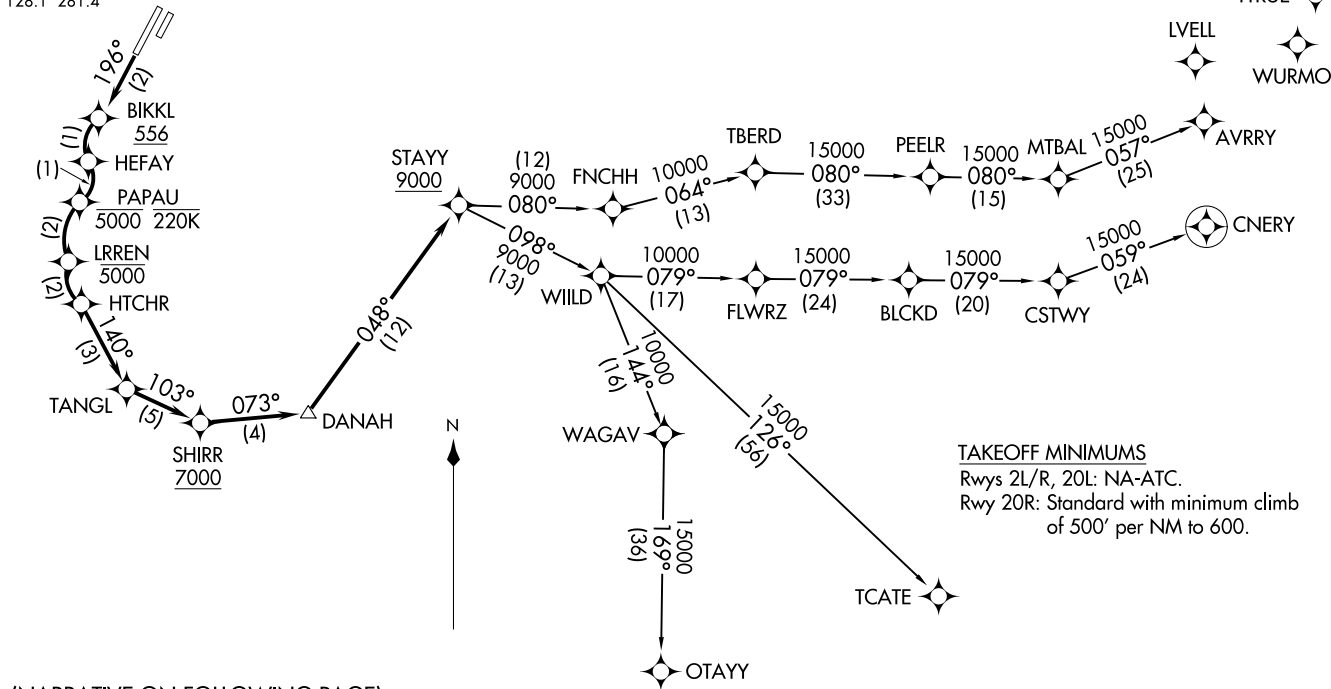
NOTE: RNP 1.  
NOTE: RF required.  
NOTE: GPS required.  
NOTE: RADAR required.  
NOTE: Turbojet only.  
NOTE: Parachute jumping all hours, 14000 and below,  
north of route between STAYY and FNCHH.  
NOTE: Do not file-To be assigned by ATC.

TOP ALTITUDE:  
13000

(STAY4.STAY) 22251  
STAY FOUR DEPARTURE (RNAV)

AL-377 (FAA)

JOHN WAYNE/ORANGE COUNTY (SNA)  
SANTA ANA, CALIFORNIA



(NARRATIVE ON FOLLOWING PAGE)





DEPARTURE ROUTE DESCRIPTION

TAKEOFF RUNWAY 20R: Climb on course 196° to cross BIKKL at or above 556, then left turn to HEFAY, then right turn to cross PAPAU at or below 5000 and at or below 220K, then left turn to cross LRREN at or below 5000, then left turn to HTCHR, then on track 140° to TANGL, then on track 103° to cross SHIRR at or above 7000, then on track 073° to DANAH, then on track 048° to cross STAYY at or above 9000, thence. . . .

. . . .on (transition). Maintain 13000. Expect filed altitude 10 minutes after departure.

AVRRY TRANSITION (STAYY4.AVRRY)

CNERY TRANSITION (STAYY4.CNERY)

OTAYY TRANSITION (STAYY4.OTAYY)

TCATE TRANSITION (STAYY4.TCATE)

SW-3, 22 FEB 2024 to 21 MAR 2024

SW-3, 22 FEB 2024 to 21 MAR 2024