

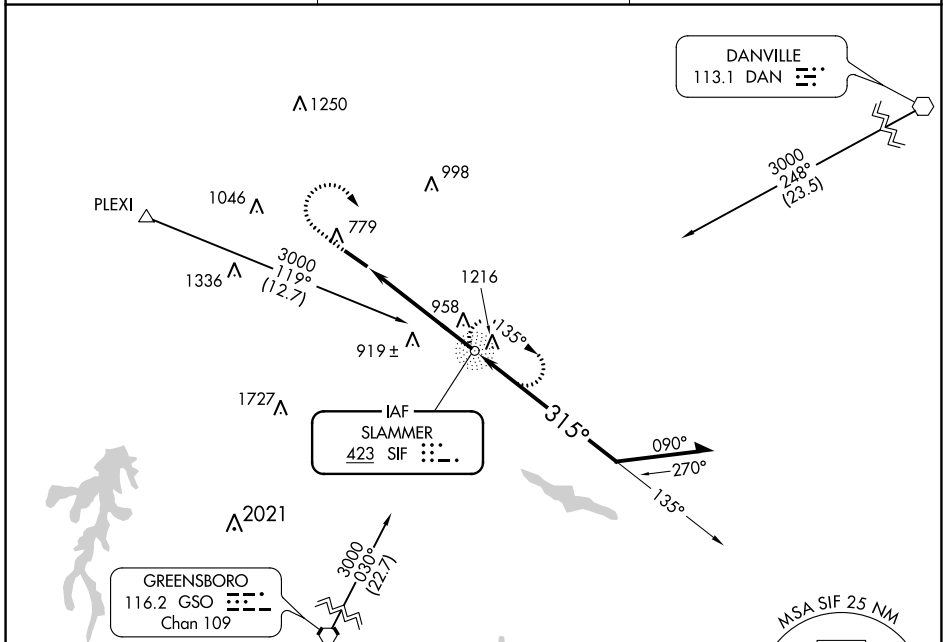
NDB SIF	APP CRS	Rwy Idg TDZE	5200
423	315°	Apt Elev	668
			694

NDB RWY 31

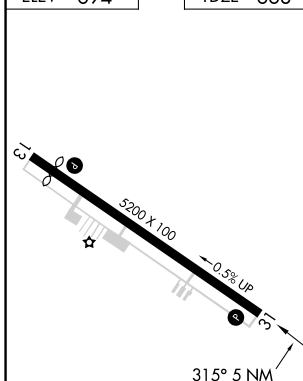
ROCKINGHAM COUNTY NC SHILOH (SIF)

▼ Rwy 31 helicopter visibility reduction below 1 SM NA. **▲** MISSED APPROACH: Climb to 1600 then climbing right turn to 2600 direct SIF NDB and hold.

AWOS-3 119.775	GREENSBORO APP CON 124.35 269.225	UNICOM 122.8 (CTAF) 0
--------------------------	---	---------------------------------



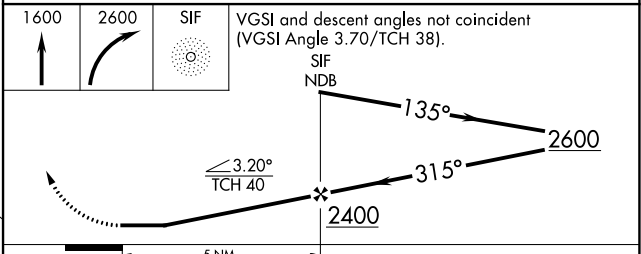
ELEV 694	TDZE 668
----------	----------



REIL Rwy 13 and 31 **0**
HIRL Rwy 13-31 **0**

FAF to MAP 5 NM

Knots	60	90	120	150	180
Min:Sec	5:00	3:20	2:30	2:00	1:40



CATEGORY	A	B	C	D
S-31	1220-1	552 (600-1)	1220-1½ 552 (600-1½)	1220-1¾ 552 (600-1¾)
CIRCLING	1280-1 586 (600-1)	1320-1 626 (700-1)	1360-1¾ 666 (700-1¾)	1420-2¼ 726 (800-2¼)

SE-2, 30 NOV 2023 to 28 DEC 2023

SE-2, 30 NOV 2023 to 28 DEC 2023

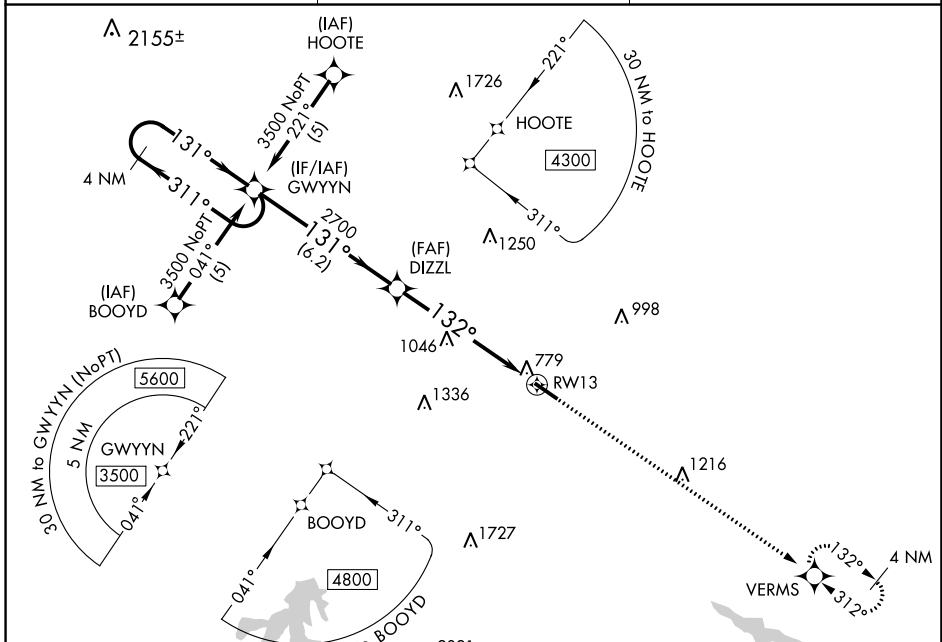
APP CRS	Rwy Idg	4700
132°	TDZE	691
	Apt Elev	694

RNAV (GPS) RWY 13

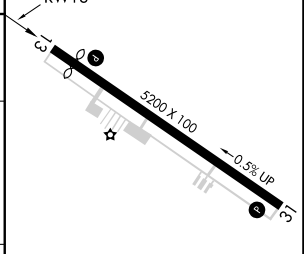
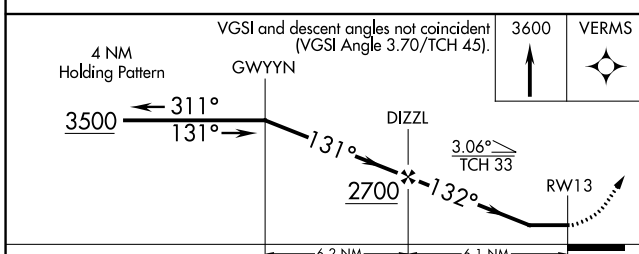
ROCKINGHAM COUNTY NC SHILOH (SIF')

RNP APCH.
 ▼ Rwy 13 helicopter visibility reduction below 1 SM NA.
 ▲ Procedure NA at night.
 MISSED APPROACH: Climb to 3600 direct VERMS and hold.

AWOS-3 119.775	GREENSBORO APP CON 124.35 269.225	UNICOM 122.8 (CTAF) 1
--------------------------	---	---------------------------------



ELEV	694	TDZE	691
------	-----	------	-----



CATEGORY	A	B	C	D	
LNVA MDA	1300-1	609 (700-1)	1300-1¼ 609 (700-1¼)	1300-2 609 (700-2)	
CIRCLING	1300-1 606 (700-1)	1320-1 626 (700-1)	1360-1¼ 666 (700-1¼)	1420-2¼ 726 (800-2¼)	REIL Rwy 13 and 31 1 HIRL Rwy 13-31 1

SE-2, 30 NOV 2023 to 28 DEC 2023

SE-2, 30 NOV 2023 to 28 DEC 2023

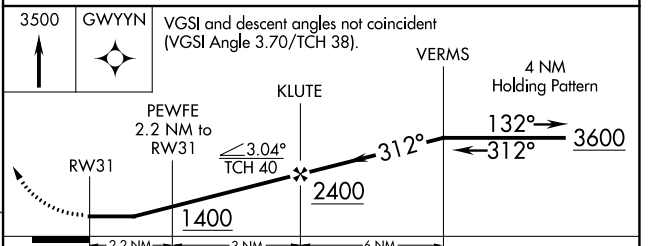
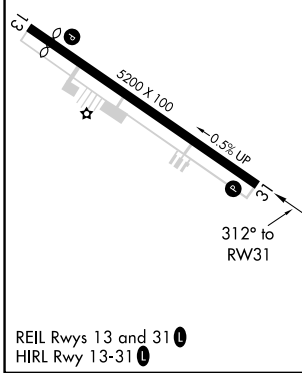
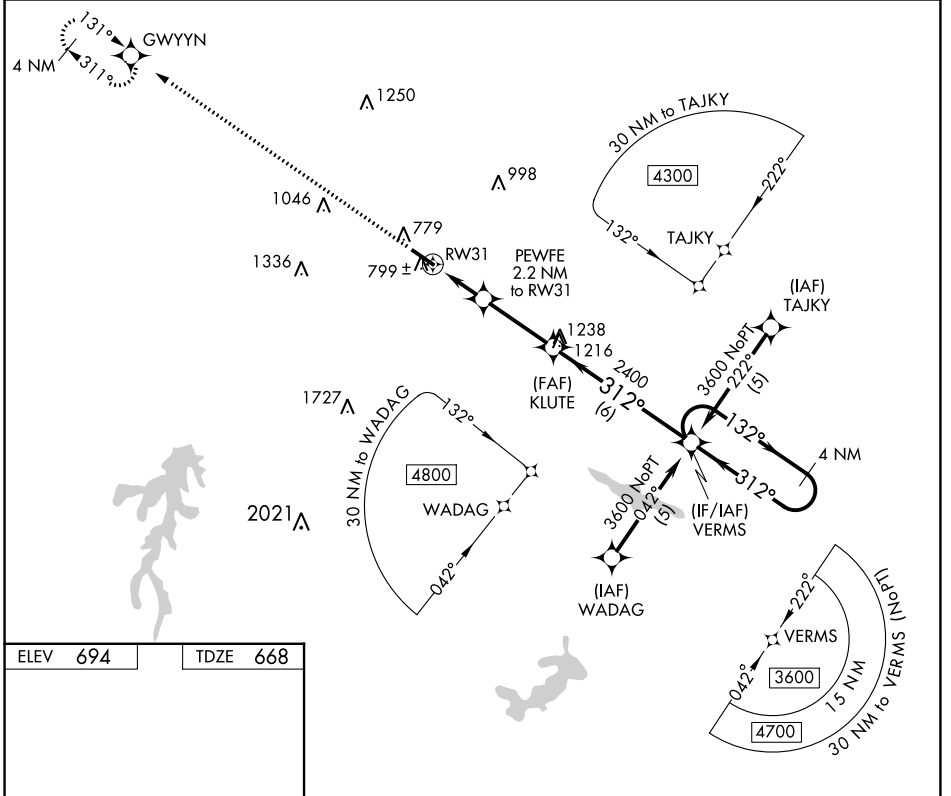
APP CRS	Rwy Idg	5200
312°	TDZE	668
	Apt Elev	694

RNAV (GPS) RWY 31

ROCKINGHAM COUNTY NC SHILOH (SIF')

RNP APCH.	MISSED APPROACH: Climb to 3500 direct GWYYN and hold.
Rwy 31 helicopter visibility reduction below 1 SM NA.	

AWOS-3 119.775	GREENSBORO APP CON 124.35 269.225	UNICOM 122.8 (CTAF) 0
--------------------------	---	---------------------------------



CATEGORY	A	B	C	D
LNAV MDA	1060-1 392 (400-1)			1060-1¼ 392 (400-1¼)
CIRCLING	1280-1 586 (600-1)	1320-1 626 (700-1)	1360-1¾ 666 (700-1¾)	1420-2¼ 726 (800-2¼)

SE-2, 30 NOV 2023 to 28 DEC 2023

SE-2, 30 NOV 2023 to 28 DEC 2023

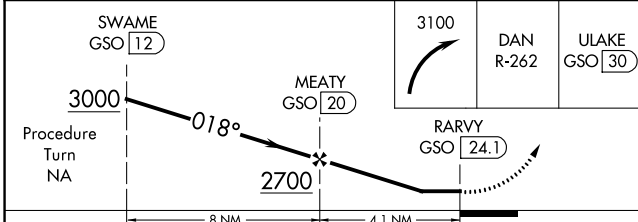
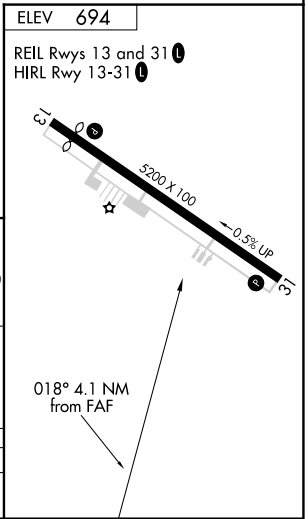
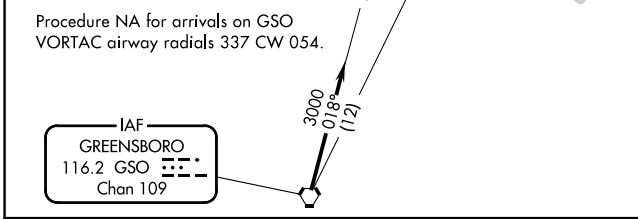
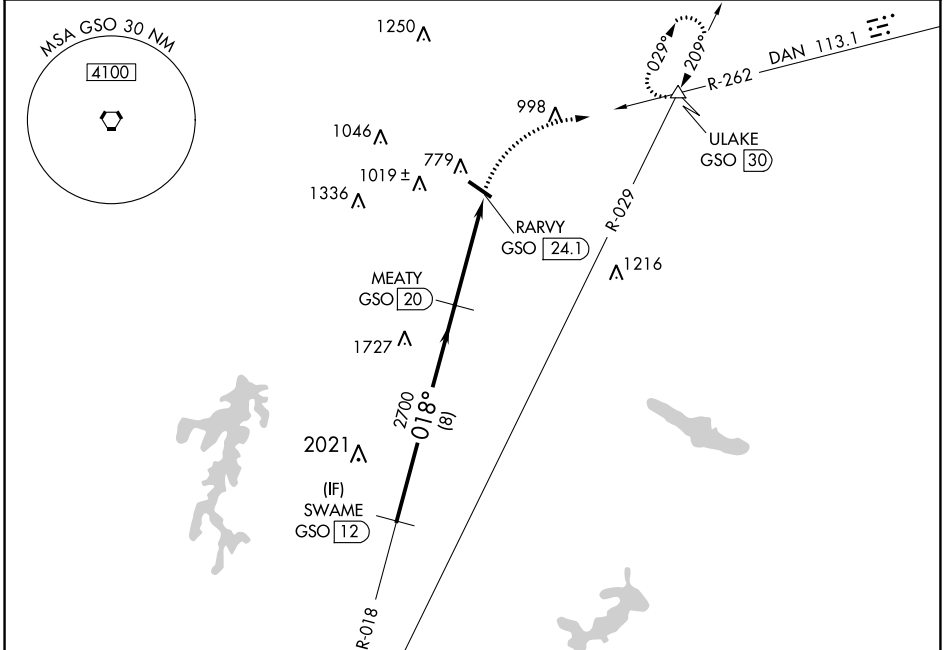
VORTAC GSO 116.2 Chan 109	APP CRS 018°	Rwy Idg TDZE Apt Elev N/A N/A 694
---	------------------------	---

VOR/DME-A

ROCKINGHAM COUNTY NC SHILOH (SIF')

<p>▼ Helicopter visibility reduction NA. ▲ NA Procedure NA at night.</p>	<p>MISSED APPROACH: Climbing right turn to 3100 via DAN VOR R-262 to ULAKE/GSO 30 DME and hold.</p>
--	---

<p>AWOS-3 119.775</p>	<p>GREENSBORO APP CON 124.35 269.225</p>	<p>UNICOM 122.8 (CTAF)</p>
----------------------------------	---	---------------------------------------



CATEGORY	A	B	C	D
CIRCLING	1400-1 706 (800-1)	1400-1¼ 706 (800-1¼)	1400-2 706 (800-2)	1420-2¼ 726 (800-2¼)

SE-2, 30 NOV 2023 to 28 DEC 2023

SE-2, 30 NOV 2023 to 28 DEC 2023