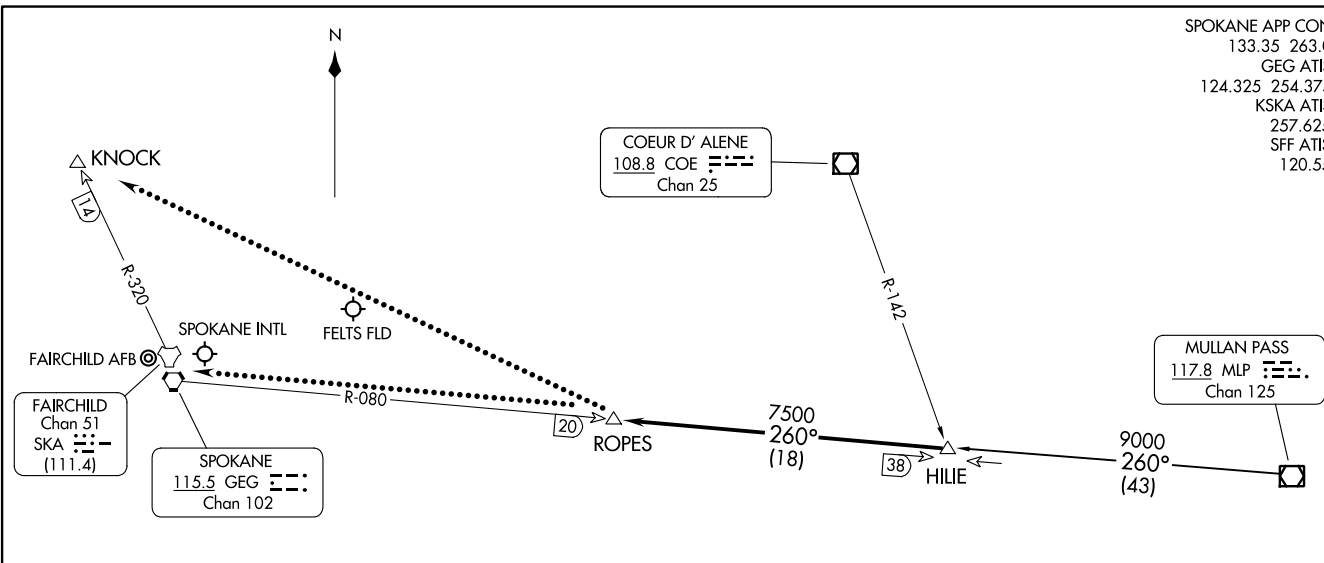


HILIE THREE ARRIVAL
(HILIE;HILIE3) 15JUN23

(HILIE;HILIE3) 23334
HILIE THREE ARRIVAL

SPOKANE APP CON
133.35 263.0
GEG ATIS
124.325 254.375
KSKA ATIS
257.625
SFF ATIS
120.55



AL-403 (FAA)

SPOKANE, WASHINGTON

ARRIVAL ROUTE DESCRIPTION

MULLAN PASS TRANSITION (MLP.HILIE3): From over MLP VOR/DME on MLP R-260 to HILIE. Thence. . .

. . . From over HILIE on SPOKANE VORTAC (GEG) R-080 to ROPES. Expect RADAR vectors to final approach course.

LOST COMMUNICATIONS

After ROPES:

LANDING SPOKANE INTL or FELTS FLD: Proceed to GEG VORTAC on GEG R-080, maintain last assigned altitude to GEG.

LANDING FAIRCHILD AFB: Proceed to KNOCK direct, maintain last assigned altitude to KNOCK.

NOTE: DME and RADAR required.

NOTE: Chart not to scale.

SPOKANE, WASHINGTON

ARRIVAL ROUTE DESCRIPTION

EPHRATA TRANSITION (EPH.ZOOMR2): From over EPH VORTAC on EPH R-065 to ZOOMR. Thence. . . .

MOSES LAKE TRANSITION (MWH.ZOOMR2): From over MWH VOR/DME on MWH R-054 to ZOOMR. Thence. . . .

. . . . From over ZOOMR on SPOKANE VORTAC (GEG) R-239 to GANGS. Expect RADAR vectors to final approach course.

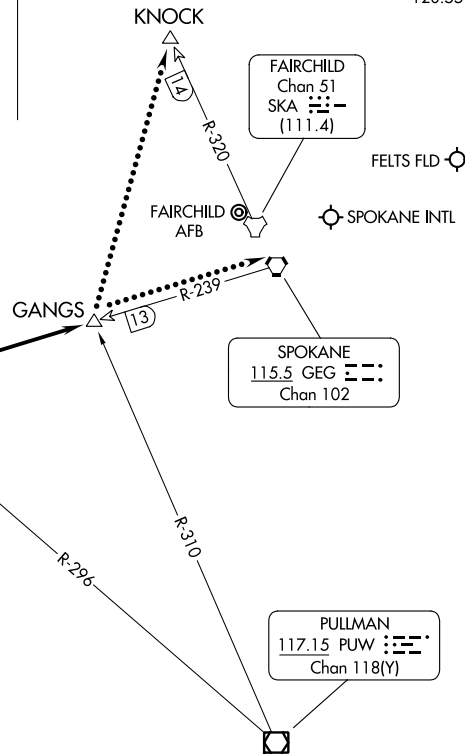
LOST COMMUNICATIONS

After GANGS:

LANDING SPOKANE INTL or FELTS FLD: Proceed to GEG VORTAC on GEG R-239, maintain last assigned altitude to GEG.

LANDING FAIRCHILD AFB: Proceed to KNOCK DME fix direct, maintain last assigned altitude to KNOCK.

SPOKANE APP CON	
123.75	282.25
GEG ATIS	
124.325	254.375
KSKA ATIS	
257.625	
SFF ATIS	
120.55	



NOTE: DME and RADAR required.

NOTE: Chart not to scale.

ZOOMR TWO ARRIVAL
(ZOOMR.ZOOMR2) 15JUN23

SPOKANE, WASHINGTON

(ZOOMR.ZOOMR2) 23334
ZOOMR TWO ARRIVAL

AL-403 (FAA)

SPOKANE, WASHINGTON