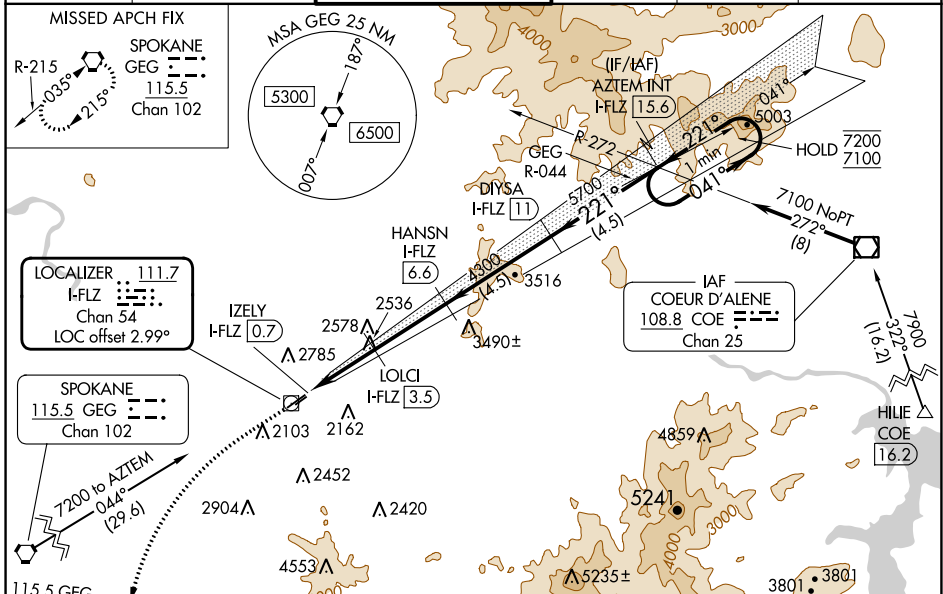


LOC/DME I-FLZ	APP CRS	Rwy Idg	4499
111.7	221°	TDZE	1957
Chan 54		Apt Elev	1957

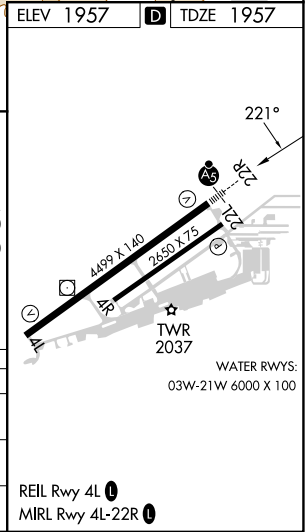
ILS or LOC RWY 22R

FELTS FLD (S/F)

DME required.		MALSR		MISSED APPROACH: Climb to 3300 then climbing left turn to 5000 on heading 200° and GEG VORTAC R-080 to GEG VORTAC and hold.	
<p>▼ Circling NA northwest of Rwy 4L-22R. Circling Rwy 22L NA at night.</p> <p>⚠ Rwy 22R helicopter visibility reduction below 3/4 SM NA. For inop ALS, increase S-ILS Cat A/B/C visibility to 7/8 SM, increase S-LOC Cat A visibility to 1 SM and Cat C visibility to 2 1/2 SM.</p> <p>❄ -16°C</p>					
ATIS	SPOKANE APP CON	FELTS TOWER ★	GND CON	CLNC DEL	UNICOM
120.55	133.35 263.0	132.5 (CTAF) 239.025	121.7	121.7	122.95



ELEV 1957	TDZE 1957																						
<table border="1"> <tr> <td>3300</td> <td>5000</td> <td>GEG</td> </tr> <tr> <td>hdg 200°</td> <td>R-080</td> <td></td> </tr> </table>	3300	5000	GEG	hdg 200°	R-080		<table border="1"> <tr> <td>HANSN I-FLZ [6.6]</td> <td>DIYSA I-FLZ [11]</td> <td>AZTEM INT I-FLZ [15.6]</td> </tr> <tr> <td>LOLCI I-FLZ [3.5]</td> <td>LOLCI I-FLZ [3.5]</td> <td>One Minute Holding Pattern</td> </tr> </table>	HANSN I-FLZ [6.6]	DIYSA I-FLZ [11]	AZTEM INT I-FLZ [15.6]	LOLCI I-FLZ [3.5]	LOLCI I-FLZ [3.5]	One Minute Holding Pattern										
3300	5000	GEG																					
hdg 200°	R-080																						
HANSN I-FLZ [6.6]	DIYSA I-FLZ [11]	AZTEM INT I-FLZ [15.6]																					
LOLCI I-FLZ [3.5]	LOLCI I-FLZ [3.5]	One Minute Holding Pattern																					
<table border="1"> <tr> <td>IZELY I-FLZ [0.7]</td> <td>I-FLZ [2.7]</td> <td>I-FLZ [3.5]</td> <td>I-FLZ [6.6]</td> <td>I-FLZ [11]</td> <td>I-FLZ [15.6]</td> </tr> <tr> <td>0.1</td> <td>2</td> <td>0.8</td> <td>3</td> <td>4.5</td> <td>4.5</td> </tr> </table>	IZELY I-FLZ [0.7]	I-FLZ [2.7]	I-FLZ [3.5]	I-FLZ [6.6]	I-FLZ [11]	I-FLZ [15.6]	0.1	2	0.8	3	4.5	4.5	<table border="1"> <tr> <td>3140</td> <td>4300</td> <td>5700</td> <td>7200</td> <td>7100</td> </tr> <tr> <td>GS 3.60°</td> <td>TCH 43</td> <td></td> <td></td> <td></td> </tr> </table>	3140	4300	5700	7200	7100	GS 3.60°	TCH 43			
IZELY I-FLZ [0.7]	I-FLZ [2.7]	I-FLZ [3.5]	I-FLZ [6.6]	I-FLZ [11]	I-FLZ [15.6]																		
0.1	2	0.8	3	4.5	4.5																		
3140	4300	5700	7200	7100																			
GS 3.60°	TCH 43																						
CATEGORY	A	B	C	D																			
S-ILS 22R	2257-1/2 300 (300-1/2)			NA																			
S-LOC 22R	2800-3/4	843 (900-3/4)	2800-1/8 843 (900-1/8)	NA																			
CIRCLING	2800-1/4 843 (900-1/4)	2800-1/2 843 (900-1/2)	3100-3 1143 (1200-3)	NA																			



NW-1, 30 NOV 2023 to 28 DEC 2023

NW-1, 30 NOV 2023 to 28 DEC 2023

WAAS CH 65931 W04A	APP CRS 038°	Rwy Idg TDZE Apt Elev	4499 1949 1957
--	------------------------	-----------------------------	---

RNAV (GPS) RWY 4L

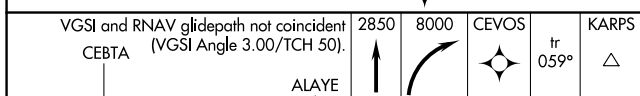
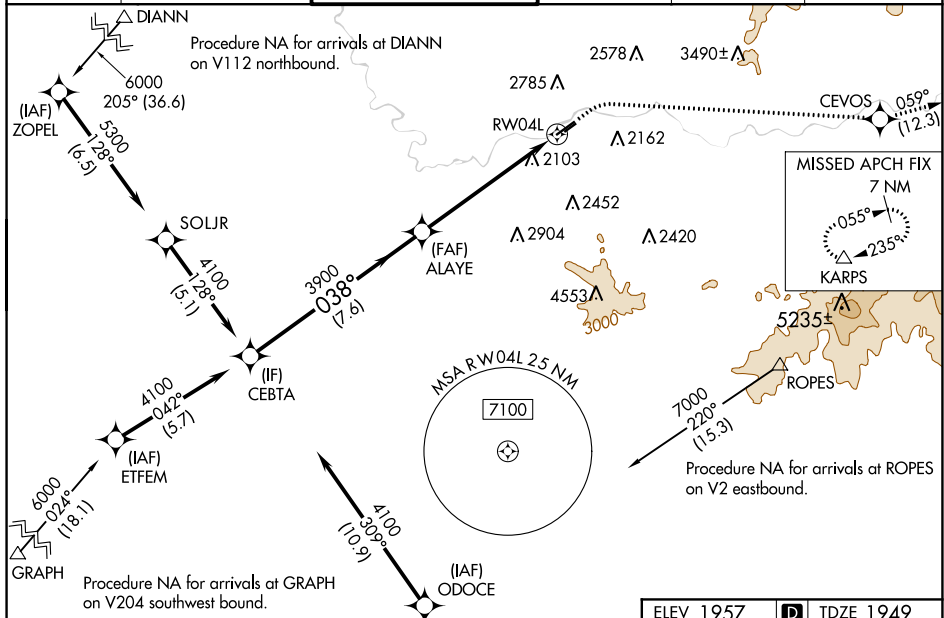
FELTS FLD (S'F'F)

RNP APCH - GPS.

⚠ Circling to Rwy 22L NA at night. Circling NA northwest of Rwy 4L-22R. Rwy 4L helicopter visibility reduction below $\frac{3}{4}$ SM NA. For uncompensated Baro-VNAV systems, LNAV/VNAV NA below -18°C or above 54°C.

⚠ MISSED APPROACH: Climb to 2850 then climbing right turn to 8000 direct CEVOS and on track 059° to KARPS and hold, continue climb-in-hold to 8000.
* LPV missed approach requires minimum climb of 330 feet per NM to 5400.

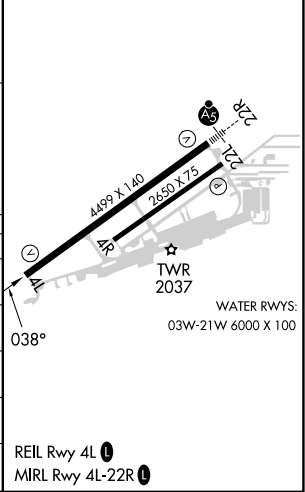
ATIS 120.55	SPOKANE APP CON 133.35 263.0	FELTS TOWER * 132.5 (CTAF) 239.025	GND CON 121.7	CLNC DEL 121.7	UNICOM 122.95
-----------------------	--	--	-------------------------	--------------------------	-------------------------



ELEV 1957	D TDZE 1949
-----------	--------------------

GP 3.00° TCH 56	4100	038°	3900	3900	2.6 NM to RWY04L	RWY04L

CATEGORY	A	B	C	D
LPV DA*		2203- $\frac{3}{4}$	254 (300- $\frac{3}{4}$)	
LPV DA		2529-1 $\frac{5}{8}$	580 (600-1 $\frac{5}{8}$)	
LNAV/VNAV DA		2779-2 $\frac{1}{2}$	830 (900-2 $\frac{1}{2}$)	
LNAV MDA	2820-1 871 (900-1)	2820-1 $\frac{1}{4}$ 871 (900-1 $\frac{1}{4}$)	2820-2 $\frac{1}{2}$	871 (900-2 $\frac{1}{2}$)
CIRCLING	2820-1 $\frac{1}{4}$	863 (900-1 $\frac{1}{4}$)	3100-3 1143 (1200-3)	3360-3 1403 (1500-3)



NW-1, 30 NOV 2023 to 28 DEC 2023

NW-1, 30 NOV 2023 to 28 DEC 2023

SPOKANE, WASHINGTON

AL-402 (FAA)

23334

VORTAC GEG 115.5 Chan 102	APP CRS 046°	Rwy Idg TDZE 1949 Apt Elev 1957
---	------------------------	---

VOR RWY 4L

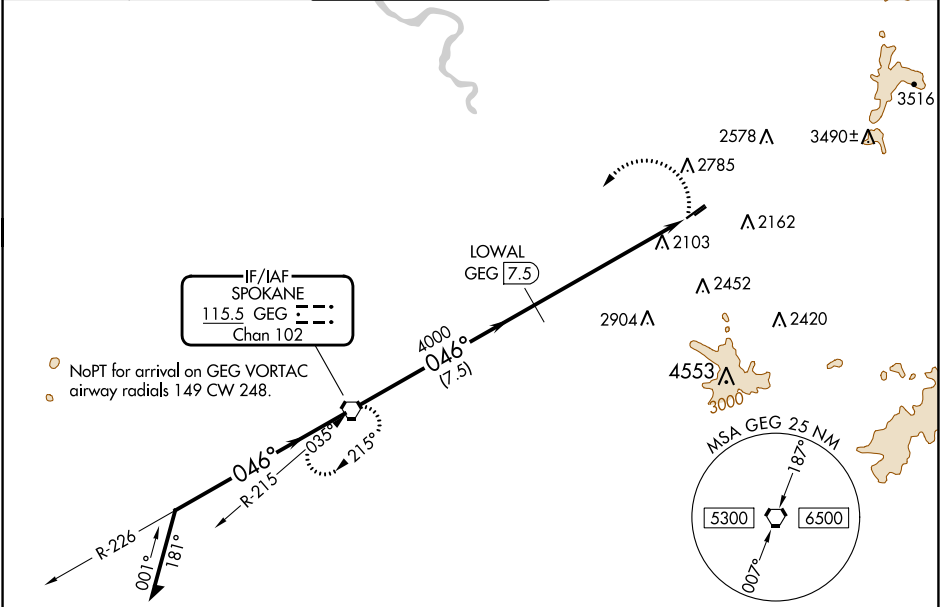
FELTS FLD (S'F'F)

DME required.

⚠ Circling NA northwest of Rwy 4L-22R. Circling Rwy 22L NA at night. Rwy 4L helicopter visibility reduction below ¾ SM NA.
❄ -16°C

MISSED APPROACH: Climbing left turn to 4500 direct GEG VORTAC and hold.

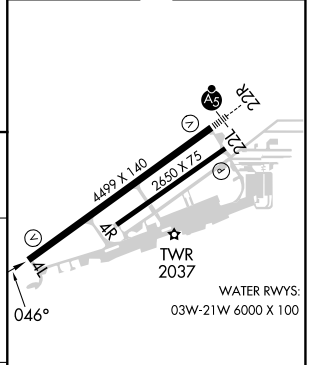
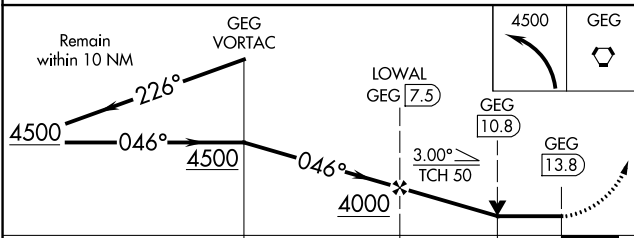
ATIS 120.55	SPOKANE APP CON 133.35 263.0	FELTS TOWER * 132.5 (CTAF) 239.025	GND CON 121.7	CLNC DEL 121.7	UNICOM 122.95
-----------------------	--	--	-------------------------	--------------------------	-------------------------



NW-1, 30 NOV 2023 to 28 DEC 2023

NW-1, 30 NOV 2023 to 28 DEC 2023

ELEV 1957	D TDZE 1949
-----------	--------------------



CATEGORY	A	B	C	D
S-4L	2960-1¼ 1011 (1100-1¼)	2960-1½ 1011 (1100-1½)	2960-3	1011 (1100-3)
C CIRCLING	2960-1¼ 1003 (1100-1¼)	2960-1½ 1003 (1100-1½)	3100-3 1143 (1200-3)	3360-3 1403 (1500-3)

SPOKANE, WASHINGTON
Amdt 6B 15JUN23

47°41'N-117°19'W

FELTS FLD (S'F'F) VOR RWY 4L