

FELTS FOUR DEPARTURE
21 JUL 16

SPOKANE, WASHINGTON
FELTS FLD (SPTF)

DEPARTURE ROUTE DESCRIPTION

TAKEOFF RUNWAYS 4L/R: Climb heading 038° to 5000. Expect RADAR vectors to assigned airway/route, thence. . . .

TAKEOFF RUNWAYS 22L/R: Climbing left turn heading 190° to 5500. Expect RADAR vectors to assigned airway/route, thence. . . .
. . . .maintain 12000 or assigned lower altitude, expect filed altitude/flight level 10 minutes after departure.

LOST COMMUNICATIONS: Climb direct GEG VORTAC before proceeding on course. Cross GEG VORTAC at or above: northeast bound V120-448 and eastbound V2 5200.

**TOP ALTITUDE:
12000**

SPOKANE DEP CON
133.35 263.0
ATIS
120.55
GND CON
121.7
FELTS TOWER★
132.5 239.025



WHATCOM
113.0 HUH
Chan 77

EPHRATA
112.6 EPH
Chan 73

SPOKANE
115.5 GEG
Chan 102

MOSES LAKE
115.0 MWH
Chan 97

YAKIMA
116.0 YKM
Chan 107

PASCO
113.75 PSC
Chan 84(Y)

PULLMAN
117.15 PUW
Chan 118(Y)

NEZ PERCE
114.45 MQG
Chan 91(Y)

PENDLETON
114.7 PDT
Chan 94

WALLA WALLA
116.4 ALW
Chan 111

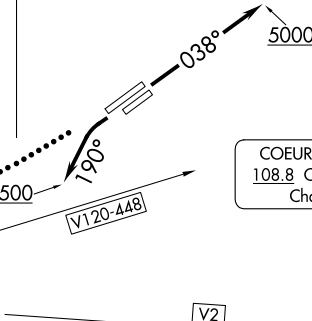
COEUR D'ALENE
108.8 COE
Chan 25

MULLAN PASS
117.8 MLP
Chan 125

TAKEOFF MINIMUMS

Rwys 4L/R: Standard with minimum climb of 400' per NM to 5000.

Rwys 22L/R: Standard with minimum climb of 370' per NM to 5500.



23334
FELTS FOUR DEPARTURE

AI-402 (FAA)

FELTS FLD (SPTF)
SPOKANE, WASHINGTON

NOTE: RADAR required.

NOTE: Chart not to scale.

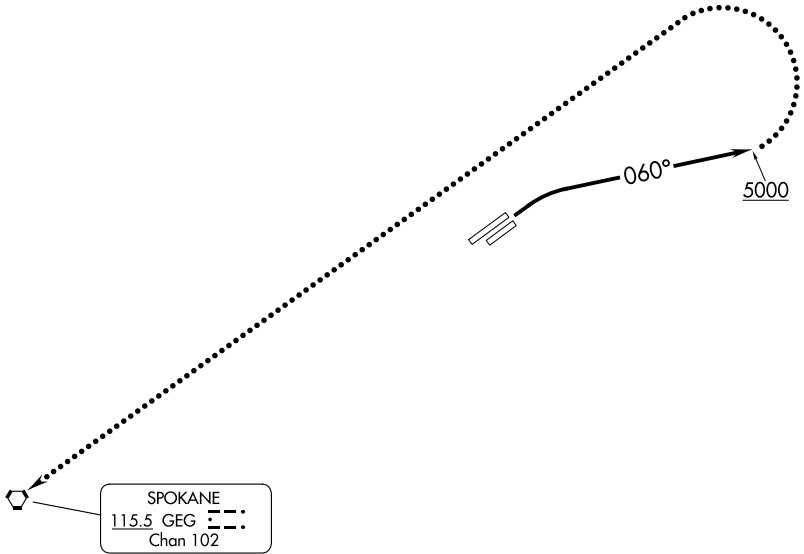
HAYDEN FOUR DEPARTURE

AL-402 (FAA)

FELTS FLD (SFF)
SPOKANE, WASHINGTON

SPOKANE DEP CON
133.35 263.0
ATIS
120.55
GND CON
121.7
FELTS TOWER★
132.5 239.025

TOP ALTITUDE:
12000



NW-1, 22 FEB 2024 to 21 MAR 2024

NW-1, 22 FEB 2024 to 21 MAR 2024

TAKEOFF MINIMUMS

Rwys 22L/R: NA- ATC.

Rwys 4L/R: Standard with minimum climb of 400' per NM to 5000.

NOTE: RADAR required.

NOTE: Chart not to scale.



DEPARTURE ROUTE DESCRIPTION

TAKEOFF RUNWAYS 22L/R: NA - ATC.

TAKEOFF RUNWAYS 4L/R: Climbing right turn heading 060° to 5000. Expect RADAR vectors to assigned route/fix.

LOST COMMUNICATIONS: If no radio contact with departure control after leaving 3000, continue climb to 5000, then left turn direct to GEG VORTAC, thence proceed on course.

HAYDEN FOUR DEPARTURE

SPOKANE, WASHINGTON
FELTS FLD (SFF)