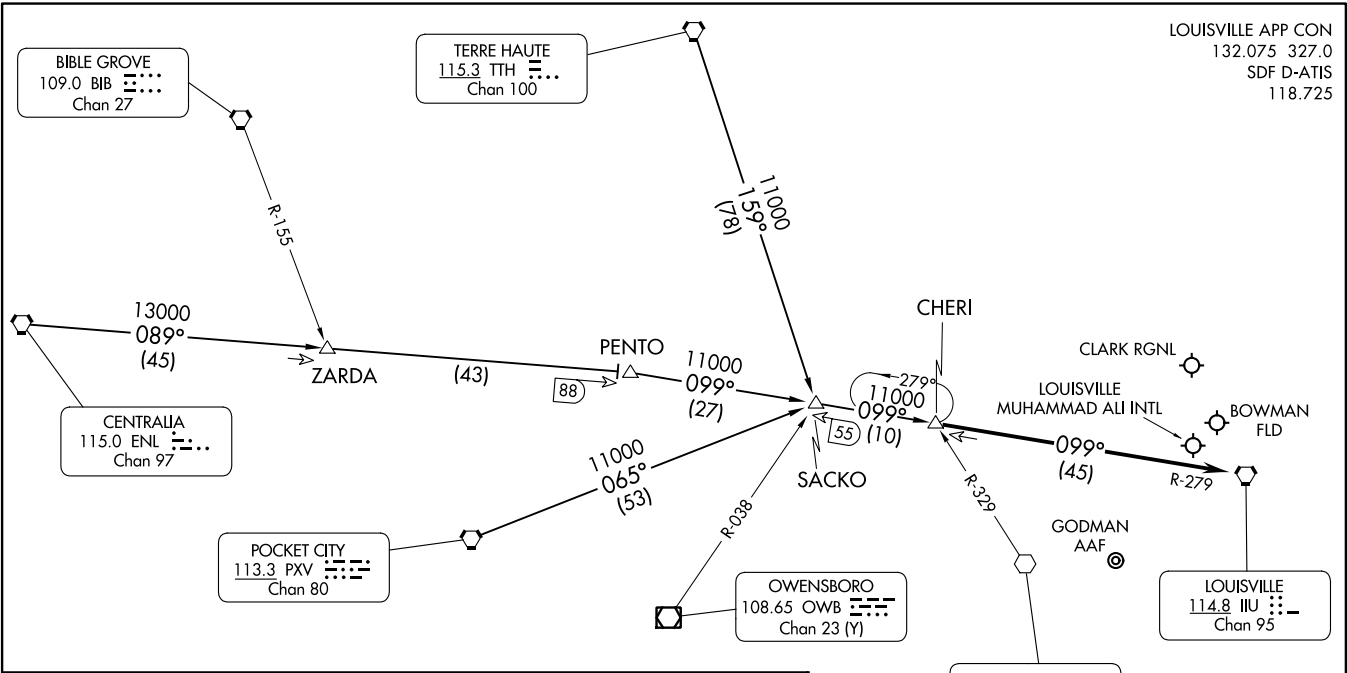


LOUISVILLE APP CON
132.075 327.0
SDF D-ATIS
118.725



ARRIVAL ROUTE DESCRIPTION

CENTRALIA TRANSITION (ENL.CHER14): From over ENL VORTAC via ENL R-089 and IIU R-279 to CHERI INT. Thence. . .

POCKET CITY TRANSITION (PXV.CHER14): From over PXV VORTAC via PXV R-065 and IIU R-279 to CHERI INT. Thence. . .

TERRE HAUTE TRANSITION (TTH.CHER14): From over TTH VORTAC via TTH R-159 and IIU R-279 to CHERI INT. Thence. . .

. . . . From over CHERI INT on IIU R-279 to IIU VORTAC. Expect radar vectors.

NOTE: Radar required.

NOTE: Chart not to scale.

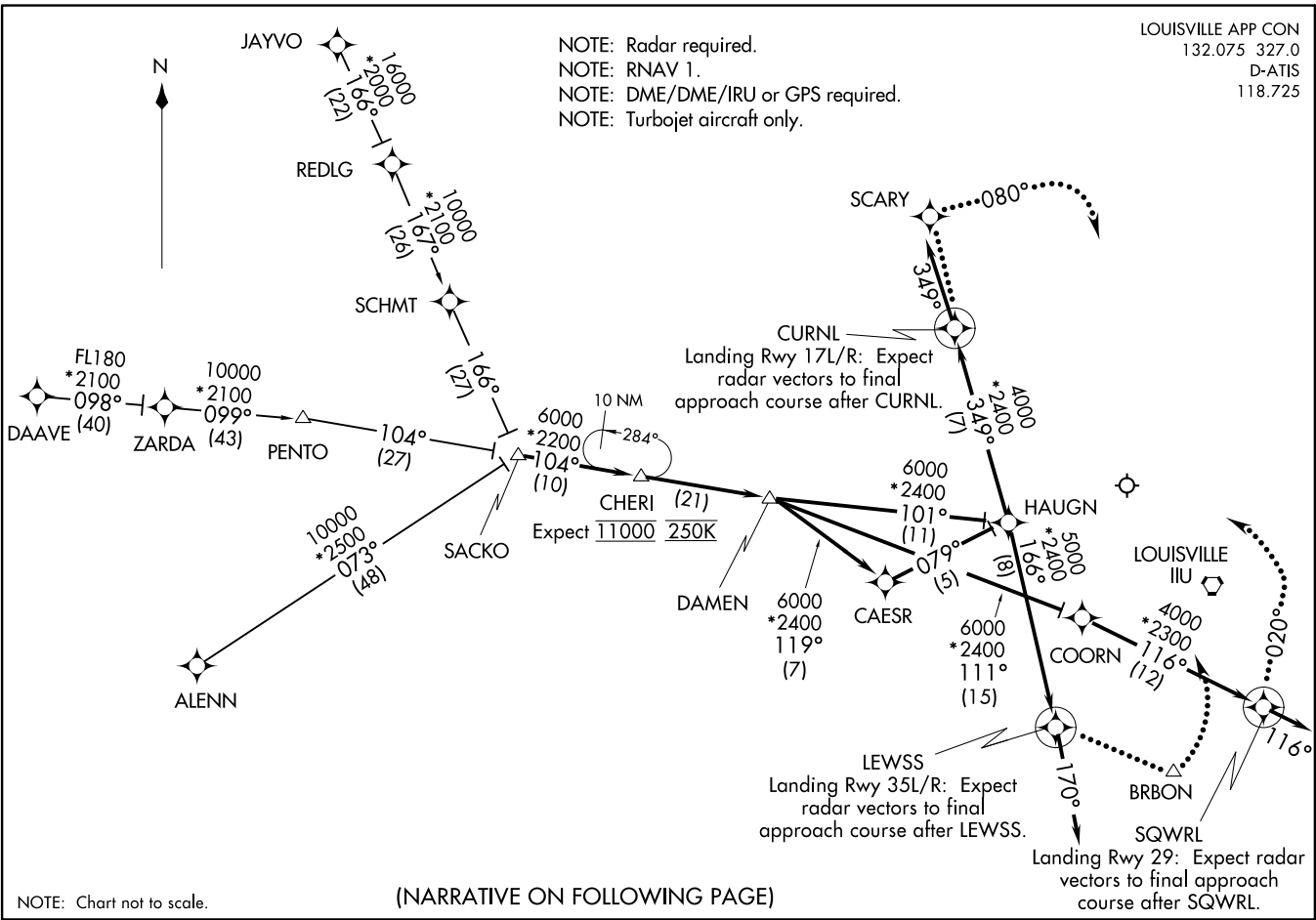
LOUISVILLE APP CON
132.075 327.0
D-ATIS
118.725

NOTE: Radar required.
NOTE: RNAV 1.
NOTE: DME/DME/IRU or GPS required.
NOTE: Turbojet aircraft only.

(SACKO DAMEN5) 1922Z
DAMEN FIVE ARRIVAL (RNAV)

AT-239 (FAA)

LOUISVILLE MUHAMMAD ALI INTL (SDF)
LOUISVILLE, KENTUCKY



NOTE: Chart not to scale.

(NARRATIVE ON FOLLOWING PAGE)

DAMEN FIVE ARRIVAL (RNAV)
(SACKO DAMEN5) 15AUG19

LOUISVILLE, KENTUCKY
LOUISVILLE MUHAMMAD ALI INTL (SDF)

DAMEN FIVE ARRIVAL (RNAV)

ARRIVAL ROUTE DESCRIPTION

ALENN TRANSITION (ALENN.DAMEN5):

DAAVE TRANSITION (DAAVE.DAMEN5):

JAYVO TRANSITION (JAYVO.DAMEN5):

From SACKO on track 104° to CHERI, then on track 104° to DAMEN, then on assigned runway transition.

LANDING RWY 17L/R: From DAMEN on track 119° to CAESR, then on track 079° to HAUGN, then on track 349° to CURNL, then on track 349°. Expect radar vectors to final approach course.

LANDING RWY 29: From DAMEN on track 111° to COORN, then on track 116° to SQWRL, then on track 116°. Expect radar vectors to final approach course.

LANDING RWY 35L/R: From DAMEN on track 101° to HAUGN, then on track 166° to LEWSS, then on track 170°. Expect radar vectors to final approach course.

LOST COMMUNICATIONS:

Landing Rwy 17L/R: Track to CURNL, cross CURNL at 4000, then proceed direct SCARY, at SCARY fly heading 080°, maintain 4000: intercept and execute ILS or LOC Rwy 17R approach, if unable proceed to IIIU VORTAC and hold, maintain 6000.

Landing Rwy 29: Track to SQWRL, cross SQWRL at 3000, at SQWRL fly heading 020°, maintain 3000. Intercept and execute LOC Rwy 29 approach. If unable, proceed to IIIU VORTAC and hold, maintain 6000.

Landing Rwy 35L/R: Track to LEWSS, cross LEWSS at 5000, then proceed direct BRBON, maintain 5000, execute ILS or LOC Rwy 35L approach. If unable, proceed to IIIU VORTAC and hold, maintain 6000.


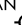

SE-1, 22 FEB 2024 to 21 MAR 2024

SE-1, 22 FEB 2024 to 21 MAR 2024

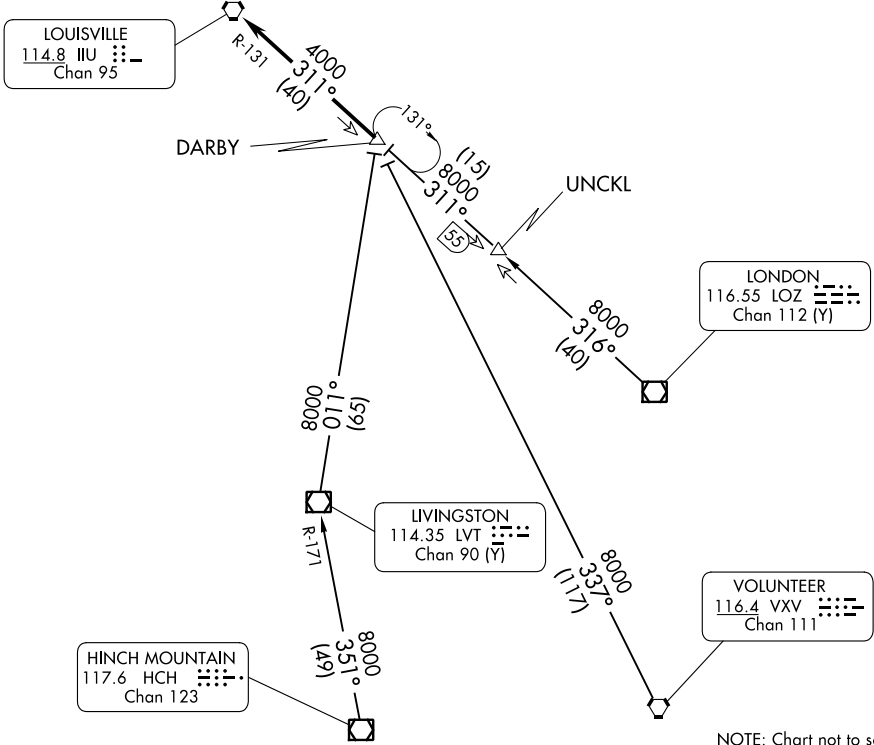
DARBY EIGHT ARRIVAL

LOUISVILLE, KENTUCKY

LOUISVILLE APP CON
 132.075 327.0
 LOU ATIS
 124.15
 SDF D-ATIS
 118.725

CLARK RGNL 
 BOWMAN FLD 
 LOUISVILLE MUHAMMAD ALI INTL 

NOTE: RADAR required.
 NOTE: DME required for LONDON and UNCKL transitions.



NOTE: Chart not to scale.

ARRIVAL ROUTE DESCRIPTION

HINCH MOUNTAIN TRANSITION (HCH.DARBY8): From over HCH VOR/DME on HCH R-351 and LVT R-171 to LVT VOR/DME, then on LVT R-011 to DARBY. Thence. . .

LONDON TRANSITION (LOZ.DARBY8): From over LOZ VOR/DME on LOZ R-316 to UNCKL, then on IIU R-131 to DARBY. Thence. . .

UNCKL TRANSITION (UNCKL.DARBY8): From over UNCKL on IIU R-131 to DARBY. Thence. . .

VOLUNTEER TRANSITION (VXV.DARBY8): From over VXV VORTAC on VXV R-337 to DARBY. Thence. . .

. . . from DARBY on IIU R-131 to IIU VORTAC. Expect RADAR vectors to final course.

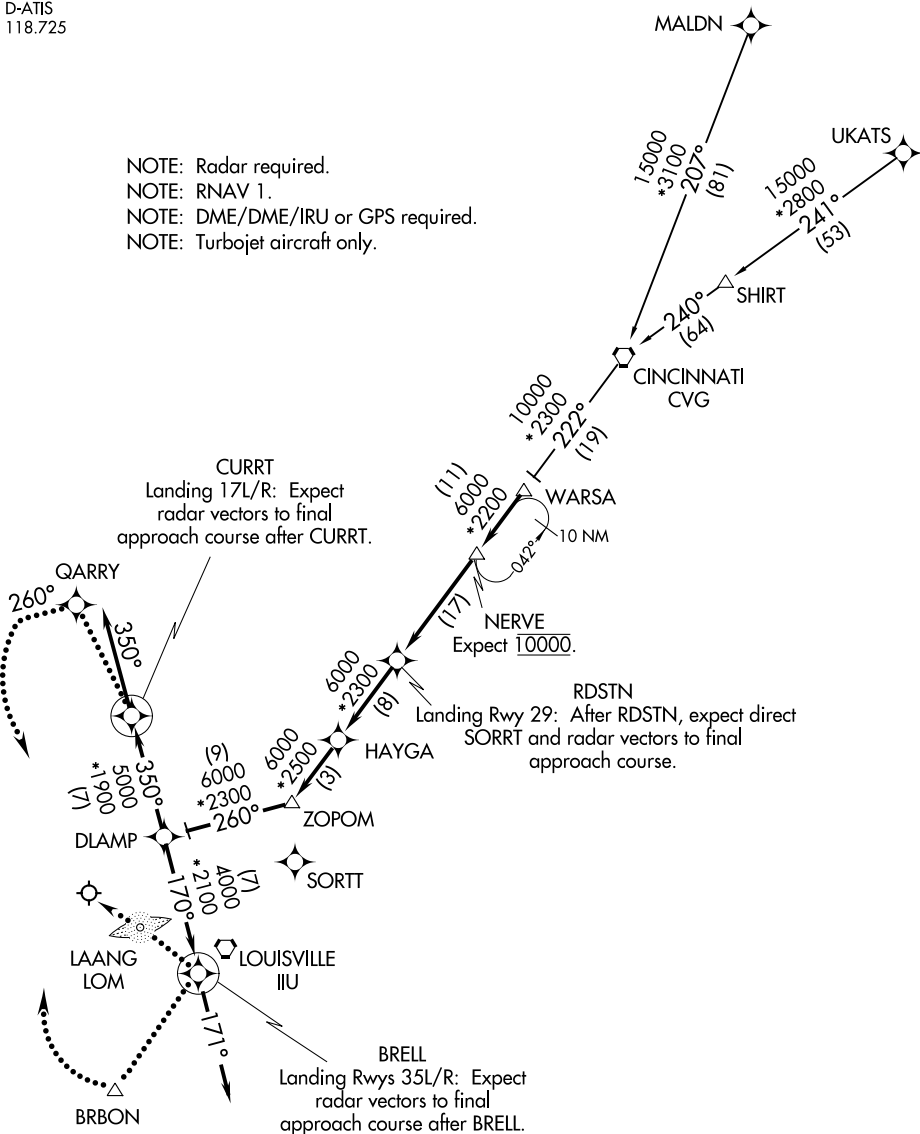
SE-1, 22 FEB 2024 to 21 MAR 2024

SE-1, 22 FEB 2024 to 21 MAR 2024

DLAMP SIX ARRIVAL (RNAV)

LOUISVILLE APP CON
132.075 327.0
D-ATIS
118.725

- NOTE: Radar required.
- NOTE: RNAV 1.
- NOTE: DME/DME/IRU or GPS required.
- NOTE: Turbojet aircraft only.



SE-1, 22 FEB 2024 to 21 MAR 2024

SE-1, 22 FEB 2024 to 21 MAR 2024

NOTE: Chart not to scale.

(NARRATIVE ON FOLLOWING PAGE)

DLAMP SIX ARRIVAL (RNAV)

DLAMP SIX ARRIVAL (RNAV)

ARRIVAL ROUTE DESCRIPTION

CINCINNATI TRANSITION (CVG.DLAMP6):

MALDN TRANSITION (MALDN.DLAMP6):

UKATS TRANSITION (UKATS.DLAMP6):

From WARSA on track 222° to NERVE, then on track 222° to RDSTN, then on track 222° to HAYGA, then on track 222° to ZOPOM, then on track 260° to DLAMP, then on assigned runway transition.

LANDING RWYS 17L/R: From DLAMP on track 350° to CURRT, then on track 350°. Expect radar vectors to final approach course.

LANDING RWY 29: From DLAMP on track 170° to BRELL, then on track 171°. Expect radar vectors to final approach course after RDSTN.

LANDING RWYS 35L/R: From DLAMP on track 170° to BRELL, then on track 171°. Expect radar vectors to final approach course.

LOST COMMUNICATIONS:

Landing Rwy 17L/R: Track to CURRT, cross CURRT at 5000, then proceed direct QARRY, at QARRY fly heading 260°, maintain 5000, intercept and execute ILS or LOC Rwy 17L approach. If unable, proceed to IIU VORTAC and hold, maintain 6000.

Landing Rwy 29: Track to BRELL, cross BRELL at 4000, then proceed direct LAANG LOM, maintain 4000, execute LOC Rwy 29 approach. If unable, proceed to IIU VORTAC and hold, maintain 6000.

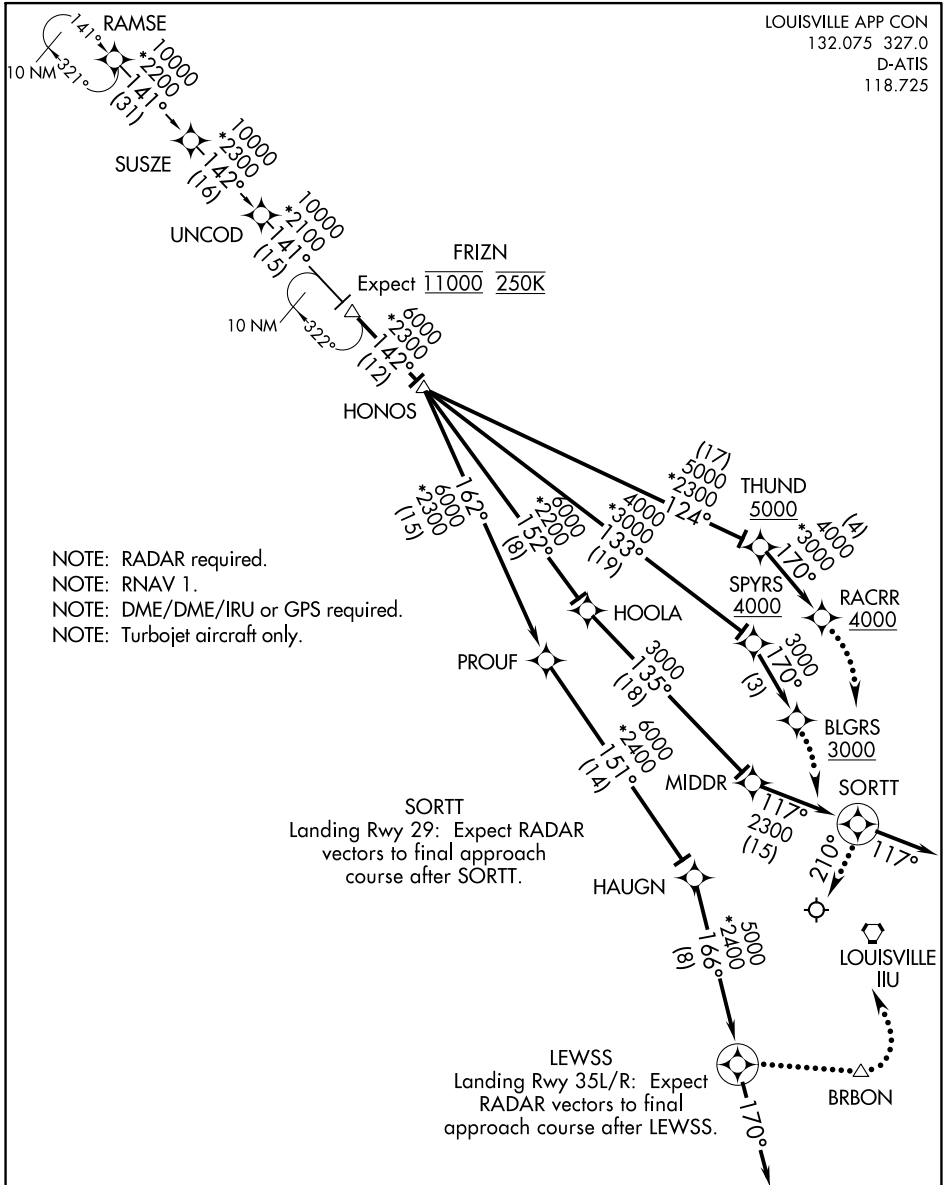
Landing Rwy 35L/R: Track to BRELL, cross BRELL at 4000, then proceed direct BRBON, maintain 4000. Execute ILS or LOC Rwy 35R approach. If unable proceed to IIU VORTAC and hold maintain 6000.

SE-1, 22 FEB 2024 to 21 MAR 2024

SE-1, 22 FEB 2024 to 21 MAR 2024

FRIZN FIVE ARRIVAL (RNAV)

LOUISVILLE APP CON
132.075 327.0
D-ATIS
118.725



SE-1, 22 FEB 2024 to 21 MAR 2024

SE-1, 22 FEB 2024 to 21 MAR 2024

(NARRATIVE ON FOLLOWING PAGE)

NOTE: Chart not to scale.

FRIZN FIVE ARRIVAL (RNAV)

FRIZN FIVE ARRIVAL (RNAV)

ARRIVAL ROUTE DESCRIPTION

RAMSE TRANSITION (RAMSE.FRIZN5)

From FRIZN on track 142° to HONOS, then on assigned runway transition.

LANDING RWY 17L: From HONOS on track 124° to cross THUND at or above 5000, then on track 170° to cross RACRR at or above 4000. Expect ILS or LOC Rwy 17L.

LANDING RWY 17R: From HONOS on track 133° to cross SPYRS at or above 4000, then on track 170° to cross BLGRS at or above 3000. Expect ILS or LOC Rwy 17R.

LANDING RWY 29: From HONOS on track 152° to HOOLA, then on track 135° to MIDDR, then on track 117° to SORTT, then on track 117°. Expect RADAR vectors to final approach course.

LANDING RWYS 35L/R: From HONOS on track 162° to PROUF, then on track 151° to HAUGN, then on track 166° to LEWSS, then on track 170°. Expect RADAR vectors to final approach course.

LOST COMMUNICATIONS:

Landing Rwy 17L: Track to RACRR, cross RACRR at or above 4000, intercept and execute ILS or LOC Rwy 17L approach. If unable, proceed to IIIU VORTAC and hold, maintain 6000.

Landing Rwy 17R: Track to BLGRS, cross BLGRS at or above 3000, intercept and execute ILS or LOC Rwy 17R approach. If unable, proceed to IIIU VORTAC and hold, maintain 6000.

Landing Rwy 29: Track to SORTT, maintain 3000, at SORTT fly heading 210°, maintain 3000, intercept and execute LOC RWY 29 approach. If unable, proceed to IIIU VORTAC and hold, maintain 6000.

Landing Rwy 35L/R: Track to LEWSS, cross LEWSS at 5000, then proceed direct BRBON, maintain 5000, execute ILS OR LOC RWY 35L approach. If unable proceed to IIIU VORTAC and hold, maintain 6000.

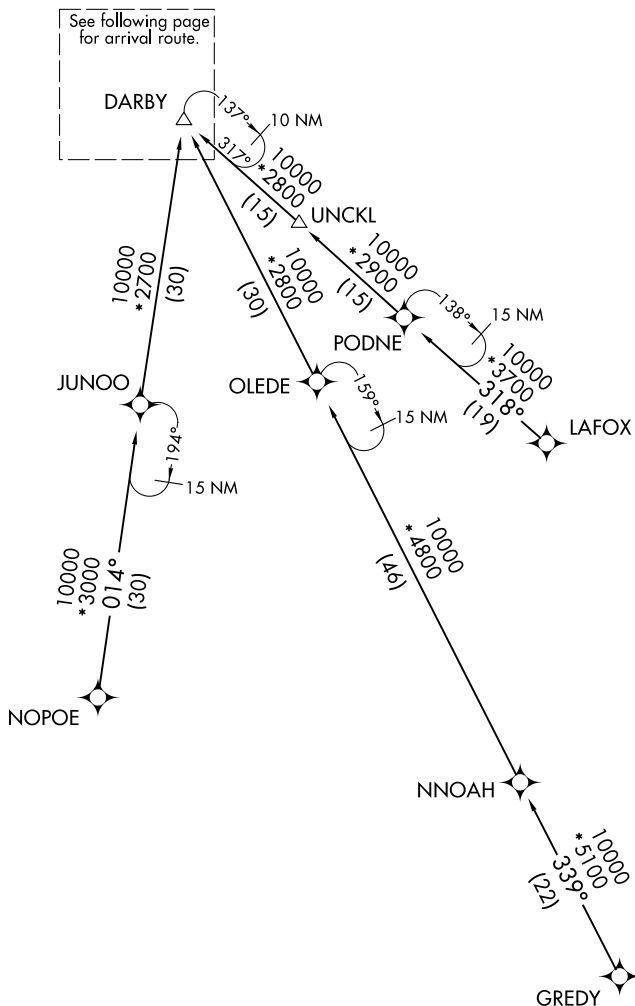
SE-1, 22 FEB 2024 to 21 MAR 2024

SE-1, 22 FEB 2024 to 21 MAR 2024

MAUDD SIX ARRIVAL (RNAV) Transition Routes

LOUISVILLE APP CON
132.075 327.0
D-ATIS
118.725

- NOTE: RADAR required.
- NOTE: RNAV 1.
- NOTE: DME/DME/IRU or GPS required.
- NOTE: Turbojet aircraft only.



NOTE: Chart not to scale.

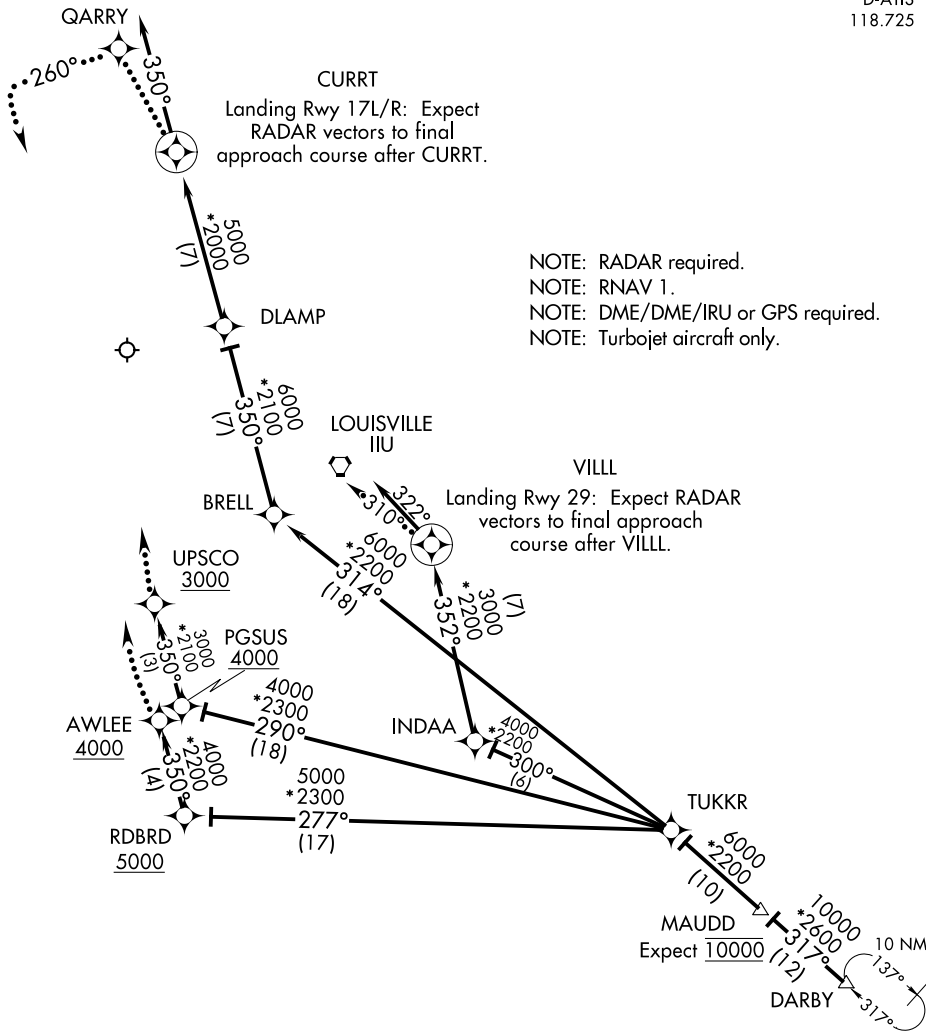
(CONTINUED ON FOLLOWING PAGE)

SE-1, 22 FEB 2024 to 21 MAR 2024

SE-1, 22 FEB 2024 to 21 MAR 2024

MAUDD SIX ARRIVAL (RNAV) Arrival Routes

LOUISVILLE APP CON
132.075 327.0
D-ATIS
118.725



SE-1, 22 FEB 2024 to 21 MAR 2024

SE-1, 22 FEB 2024 to 21 MAR 2024

NOTE: Chart not to scale.

(NARRATIVE ON FOLLOWING PAGE)

MAUDD SIX ARRIVAL (RNAV)

ARRIVAL ROUTE DESCRIPTION

GREY TRANSITION (GREY.MAUDD6)

LAFOX TRANSITION (LAFOX.MAUDD6)

NOPOE TRANSITION (NOPOE.MAUDD6)

UNCKL TRANSITION (UNCKL.MAUDD6)

From DARBY on track 317° to MAUDD, then on track 317° to TUKKR. Then on assigned runway transition.

LANDING RWYS 17L/R: From TUKKR on track 314° to BRELL, then on track 350° to DLAMP, then on track 350° to CURRT, then on track 350°. Expect radar vectors to final approach course.

LANDING RWY 29: From TUKKR on track 300° to INDAA, then on track 352° to VILL, then on heading 322°, or as assigned by ATC. Expect radar vectors to final approach course.

LANDING RWY 35L: From TUKKR on track 277° to cross RDBRD at or above 5000, then on track 350° to cross AWLEE at or above 4000. Expect ILS or LOC Rwy 35L.

LANDING RWY 35R: From TUKKR on track 290° to cross PGSUS at or above 4000, then on track 350° to cross UPSCO at or above 3000. Expect ILS or LOC Rwy 35R.

LOST COMMUNICATIONS:

LANDING RWYS 17L/R: Track to CURRT, cross CURRT at 5000, then proceed direct QARRY, at QARRY fly heading 260°, maintain 5000, intercept and execute ILS or LOC RWY 17L approach. If unable, proceed to IIU VORTAC and hold, maintain 6000.

LANDING RWY 29: Track to VILL, cross VILL at 3000, at VILL fly heading 310°, intercept and execute LOC RWY 29 approach. If unable, proceed to IIU VORTAC and hold, maintain 6000.

LANDING RWY 35L: Track to AWLEE, cross AWLEE at or above 4000, intercept and execute ILS or LOC Rwy 35L approach. If unable, proceed to IIU VORTAC and hold, maintain 6000.

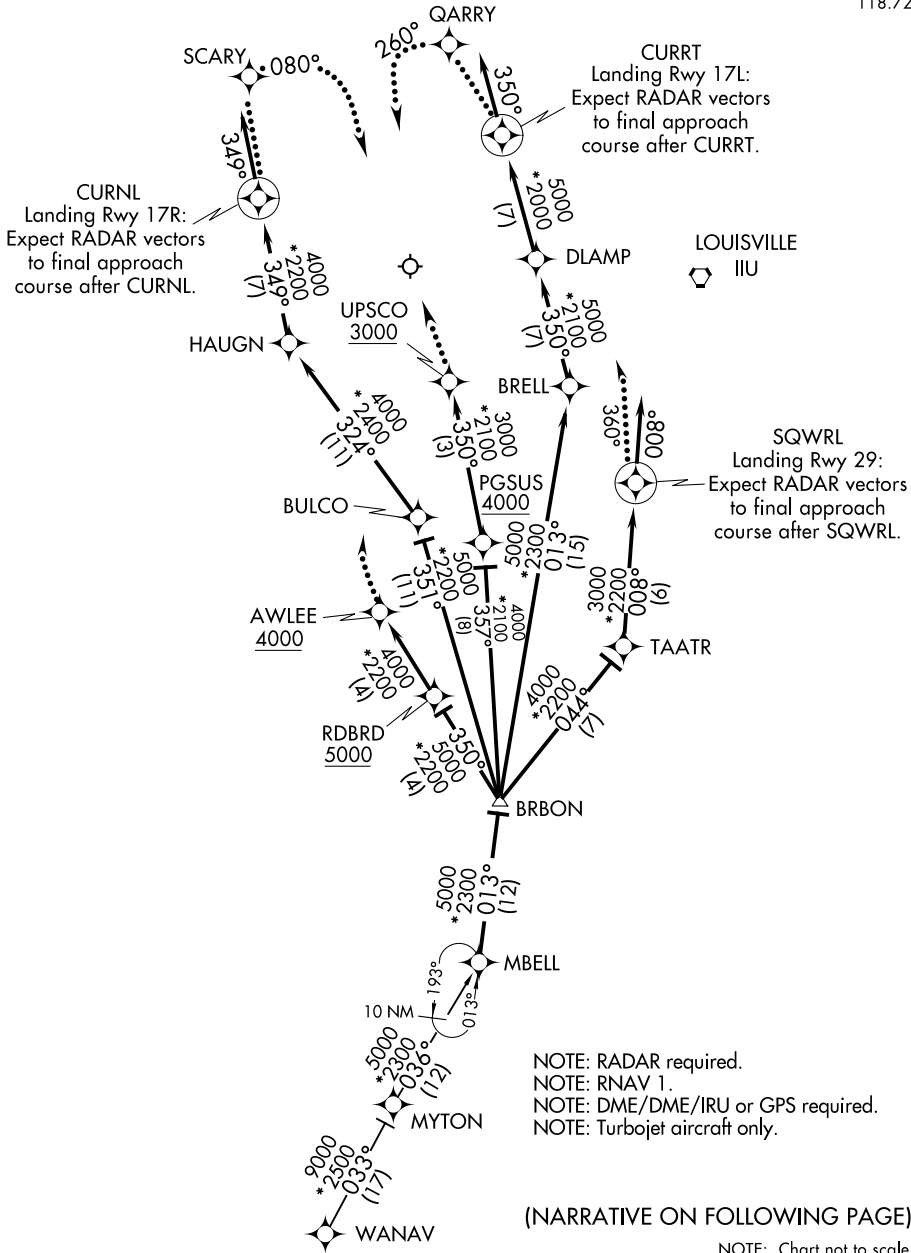
LANDING RWY 35R: Track to UPSCO, cross UPSCO at or above 3000, intercept and execute ILS or LOC Rwy 35R approach. If unable, proceed to IIU VORTAC and hold, maintain 6000.

SE-1, 22 FEB 2024 to 21 MAR 2024

SE-1, 22 FEB 2024 to 21 MAR 2024

MBELL FOUR ARRIVAL (RNAV)

LOUISVILLE APP CON
132.075 327.0
D-ATIS
118.725



SE-1, 22 FEB 2024 to 21 MAR 2024

SE-1, 22 FEB 2024 to 21 MAR 2024

MBELL FOUR ARRIVAL (RNAV)

MBELL FOUR ARRIVAL (RNAV)

ARRIVAL ROUTE DESCRIPTION

MYTON TRANSITION (MYTON.MBELL4):
WANAV TRANSITION (WANAV.MBELL4):

From MBELL on track 013° to BRBON, then on assigned runway transition.

Landing Rwy 17L: From BRBON on track 013° to BRELL, then on track 350° to DLAMP, then on track 350° to CURRT, then on track 350°. Expect RADAR vectors to final approach course.

Landing Rwy 17R: From BRBON on track 351° to BULCO, then on track 324° to HAUGN, then on track 349° to CURNL, then on track 349°. Expect RADAR vectors to final approach course.

Landing Rwy 29: From BRBON on track 044° to TAATR, then on track 008° to SQWRL, then on track 008°. Expect RADAR vectors to final approach course.

Landing Rwy 35L: From BRBON on track 350° to cross RDBRD at or above 5000, then on track 350° to cross AWLEE at or above 4000. Expect ILS or LOC Rwy 35L.

Landing Rwy 35R: From BRBON on track 357° to cross PGSUS at or above 4000, then on track 350° to cross UPSCO at or above 3000. Expect ILS or LOC Rwy 35R.

LOST COMMUNICATIONS:

Landing Rwy 17L: Track to CURRT, cross CURTT at 5000, then proceed direct QARRY, at QARRY fly heading 260°, maintain 5000, intercept and execute ILS or LOC Rwy 17L approach. If unable, proceed to IIIU VORTAC and hold, maintain 6000.

Landing Rwy 17R: Track to CURNL, cross CURNL at 4000, then proceed direct SCARY, at SCARY fly heading 080°, maintain 4000, intercept and execute ILS or LOC Rwy 17R approach. If unable, proceed to IIIU VORTAC and hold, maintain 6000.

Landing Rwy 29: Track to SQWRL, cross SQWRL at 3000, at SQWRL fly heading 360°, intercept and execute LOC Rwy 29 approach. If unable, proceed to IIIU VORTAC and hold, maintain 6000.

Landing Rwy 35L: Track to AWLEE, cross AWLEE at or above 4000, intercept and execute ILS or LOC Rwy 35L approach. If unable, proceed to IIIU VORTAC and hold, maintain 6000.

Landing Rwy 35R: Track to UPSCO, cross UPSCO at or above 3000, intercept and execute ILS or LOC Rwy 35R approach. If unable, proceed to IIIU VORTAC and hold, maintain 6000.

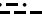
SE-1, 22 FEB 2024 to 21 MAR 2024

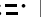
SE-1, 22 FEB 2024 to 21 MAR 2024


REDSTONE SIX ARRIVAL


LOUISVILLE, KENTUCKY

LOUISVILLE APP CON
 132.075 327.0
 LOU ATIS
 124.15
 SDF D-ATIS
 118.725

ROSEWOOD
 117.5 ROD 
 Chan 122

CINCINNATI
 117.3 CVG 
 Chan 120

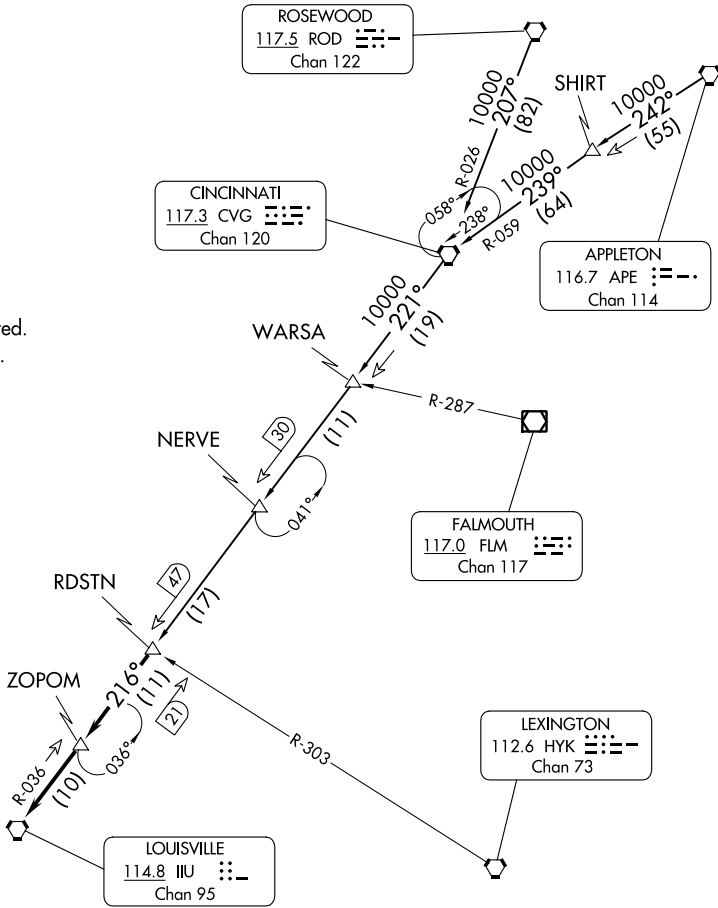
APPLETON
 116.7 APE 
 Chan 114

FALMOUTH
 117.0 FLM 
 Chan 117

LEXINGTON
 112.6 HYK 
 Chan 73

LOUISVILLE
 114.8 IIU 
 Chan 95

NOTE: RADAR required.
 NOTE: DME required.



NOTE: Chart not to scale.

ARRIVAL ROUTE DESCRIPTION

APPLETON TRANSITION (APE.RDSTN6): From over APE VORTAC via APE R-242 and CVG R-059 to CVG VORTAC, then via CVG R-221 to RDSTN. Thence....

CINCINNATI TRANSITION (CVG.RDSTN6): From over CVG VORTAC via CVG R-221 to RDSTN. Thence....

ROSEWOOD TRANSITION (ROD.RDSTN6): From over ROD VORTAC via ROD R-207 and CVG R-026 to CVG VORTAC, then via CVG R-221 to RDSTN. Thence....

....from over RDSTN on IIU R-036 to ZOPOM, then on IIU R-036 to IIU VORTAC.
 Expect radar vectors to final approach after ZOPOM.

REDSTONE SIX ARRIVAL

LOUISVILLE, KENTUCKY