

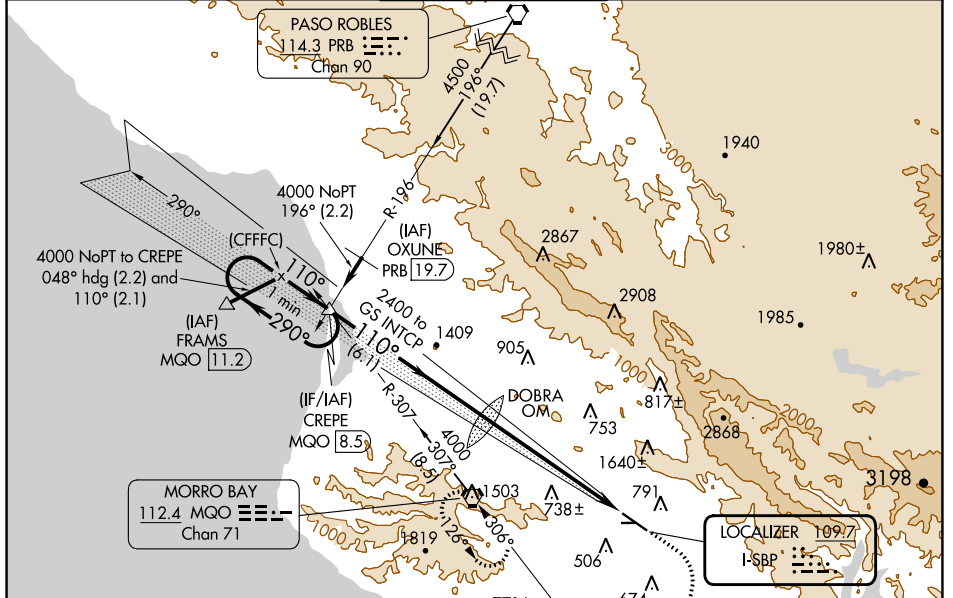
LOC I-SBP 109.7	APP CRS 110°	Rwy ldg TDZE Apt Elev	5300 198 212
---------------------------	------------------------	-----------------------------	---

ILS RWY 11

SLO COUNTY (SBP)

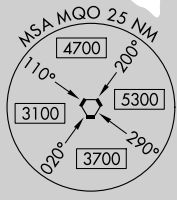
	MALS R 	MISSED APPROACH: Climb to 900 then climbing right turn to 3300 on heading 175° and on MQO VORTAC R-126 to MQO VORTAC and hold, continue climb-in-hold to 3300.		
--	------------	--	--	--

ATIS* 120.6	SANTA BARBARA APP CON* 127.725 244.575	SAN LUIS TOWER* 124.0 (CTAF) 379.9	GND CON 121.6	UNICOM 122.95
-----------------------	--	--	-------------------------	-------------------------

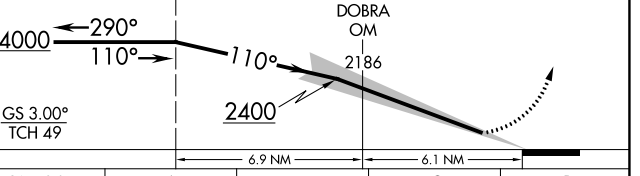


When GS not used, use LOC RWY 11 procedure.

ELEV 212	D	TDZE 198
----------	----------	----------



One Minute Holding Pattern	CREPE INT MQO 8.5	900	3300	MQO R-126	MQO
----------------------------	-------------------	-----	------	-----------	-----



CATEGORY	A	B	C	D
S-ILS 11		398-1/2	200 (200-1/2)	

REIL Rwy 29
 HIRL Rwy 11-29

SW-3, 22 FEB 2024 to 21 MAR 2024

SW-3, 22 FEB 2024 to 21 MAR 2024

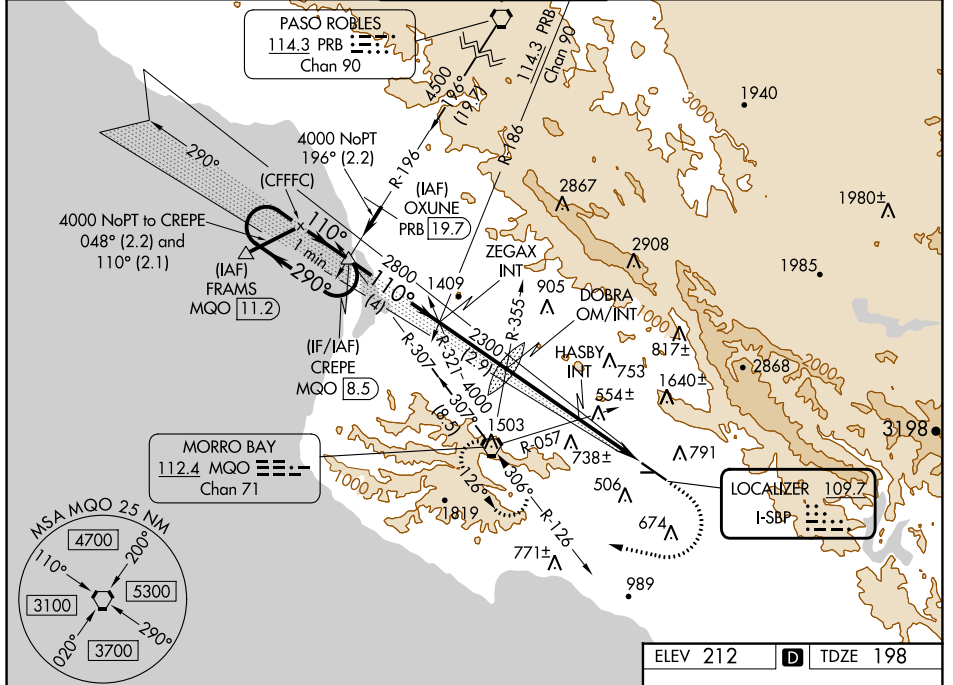
LOC I-SBP 109.7	APP CRS 110°	Rwy ldg TDZE Apt Elev	5300 198 212
---------------------------	------------------------	-----------------------------	---

LOC RWY 11

SLO COUNTY (SBP)

	Circling NA north of Rwy 11-29.	MALS	MISSED APPROACH: Climb to 1200 then climbing right turn to 3300 on heading 267° and on MQO VORTAC R-126 to MQO VORTAC and hold.	

ATIS* 120.6	SANTA BARBARA APP CON* 127.725 244.575	SAN LUIS TOWER* 124.0 (CTAF) 379.9	GND CON 121.6	UNICOM 122.95
-----------------------	--	--	-------------------------	-------------------------



SW-3, 22 FEB 2024 to 21 MAR 2024

SW-3, 22 FEB 2024 to 21 MAR 2024

VGS1 and descent angles not coincident (VGS1 Angle 3.00/TCH 50).		1200	3300	MQO	MQO
One Minute Holding Pattern			hdg 267°		
4000 ← 290° 110° →	CREPE MQO 8.5	ZEGAX INT	DOBRA OM/INT	HASBY INT	3.23° TCH 50
2800		2300		1180	
4 NM		2.9 NM		3.2 NM	
2.9 NM		2.9 NM		2.9 NM	
CATEGORY	A	B	C	D	
S-11	1180-3/4 982 (1000-3/4)	1180-1 982 (1000-1)	1180-2 1/2 982 (1000-2 1/2)		
CIRCLING	1180-1 1/4 968 (1000-1 1/4)	1220-1 1/2 1008 (1100-1 1/2)	1460-3 1248 (1300-3)	1560-3 1348 (1400-3)	
HASBY INT MINIMUMS (DUAL VOR RECEIVERS REQUIRED)					
S-11	760-1/2 562 (600-1/2)	760-1 1/4 562 (600-1 1/4)	760-1 1/4 562 (600-1 1/4)		
CIRCLING	840-1 628 (700-1)	1220-1 1/2 1008 (1100-1 1/2)	1460-3 1248 (1300-3)	1560-3 1348 (1400-3)	
REIL Rwy 29		HIRL Rwy 11-29			
FAF to MAP 6.1 NM					
Knots		60	90	120	150 180
Min:Sec		6:06	4:04	3:03	2:26 2:02

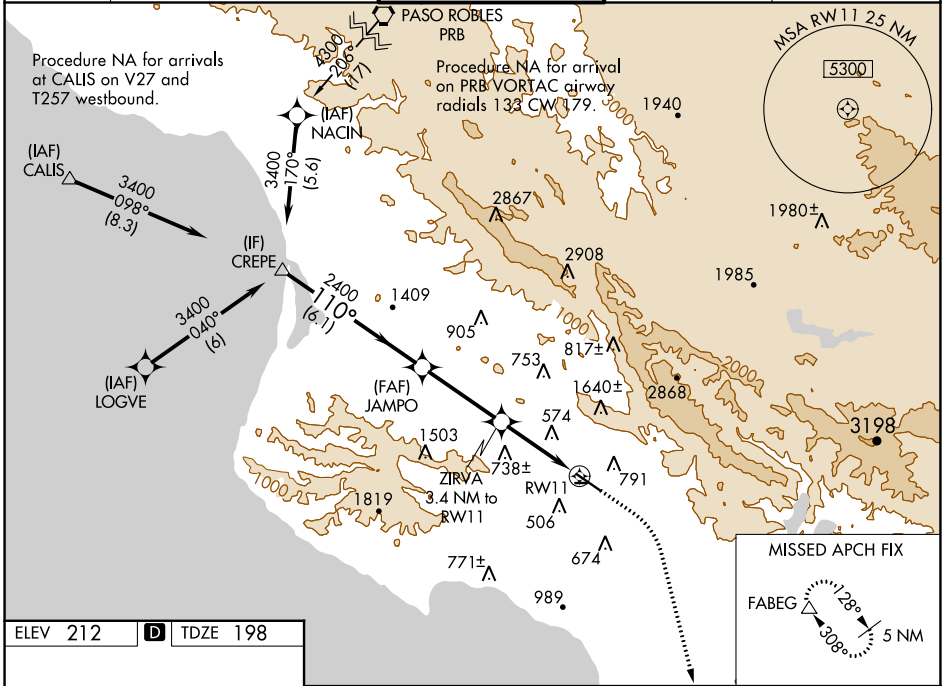
WAAS CH 50328 W11A	APP CRS 110°	Rwy Idg TDZE 198 Apt Elev 212	5300
--	------------------------	---	-------------

RNAV (GPS) RWY 11

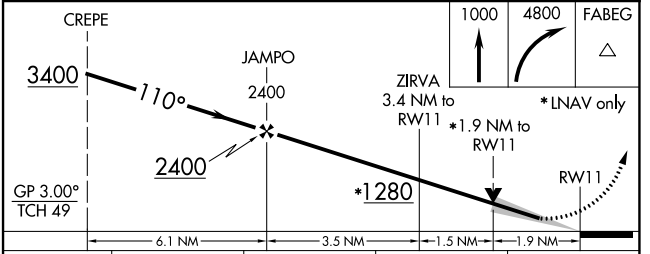
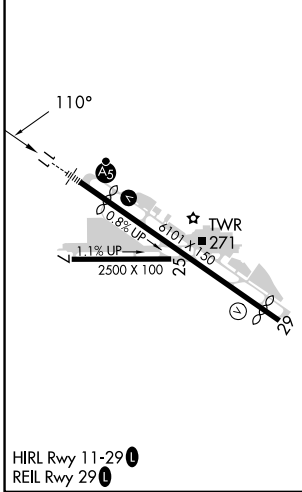
SLO COUNTY (SBP)

RNP APCH.	MALSR	MISSED APPROACH: Climb to 1000 then climbing right turn to 4800 direct FABEG and hold, continue climb-in-hold to 4800.
<p>⚠ Circling NA north of Rwy 11-29. Circling Rwy 25 NA at night. For uncompensated Baro-VNAV systems, LNAV/VNAV NA below 0°C or above 54°C. For inop ALS, increase LNAV/VNAV all Cats visibility to 2 SM.</p>		

ATIS* 120.6	SANTA BARBARA APP CON* 127.725 244.575	SAN LUIS TOWER* 124.0 (CTAF) 0 379.9	GND CON 121.6	UNICOM 122.95
-----------------------	--	--	-------------------------	-------------------------



ELEV 212	D	TDZE 198
----------	----------	----------



CATEGORY	A	B	C	D
LPV DA		398-1/2	200 (200-1/2)	
LNAV/VNAV DA		946-1 3/4	748 (800-1 3/4)	
LNAV MDA	840-1/2	642 (700-1/2)	840-1 3/8	642 (700-1 3/8)
C CIRCLING	840-1 628 (700-1)	1220-1 1/2 1008 (1100-1 1/2)	1460-3 1248 (1300-3)	1560-3 1348 (1400-3)

SW-3, 22 FEB 2024 to 21 MAR 2024

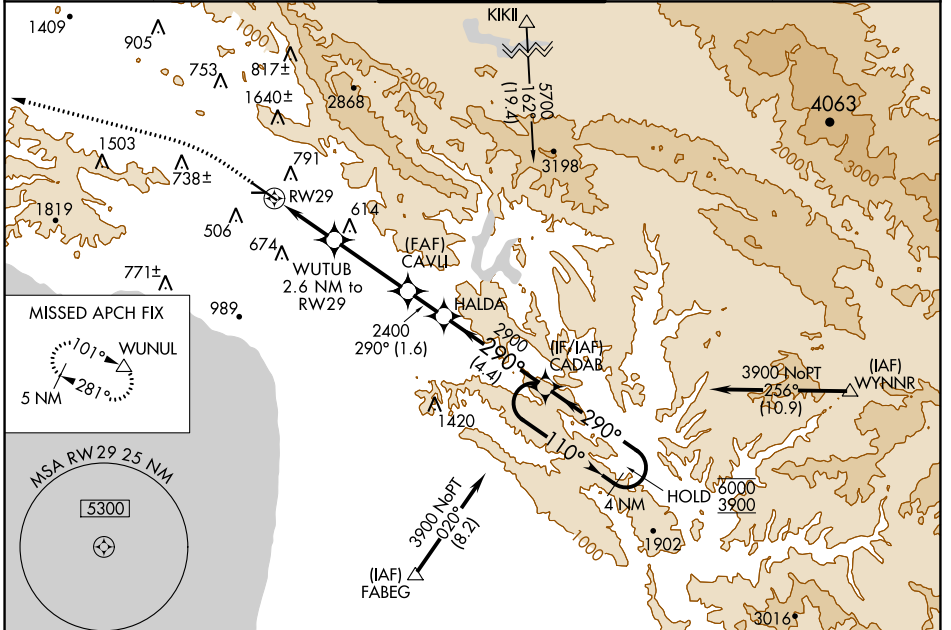
SW-3, 22 FEB 2024 to 21 MAR 2024

WAAS CH 53443	APP CRS 290°	Rwy Idg TDZE Apt Elev	5600 212 212
W29A			

RNAV (GPS) RWY 29

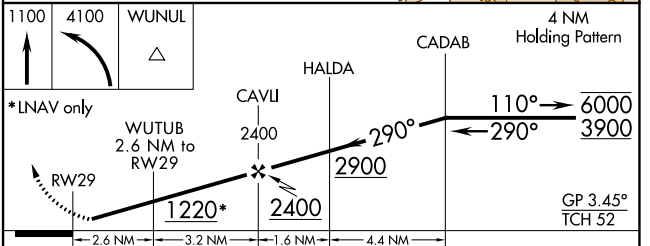
SLO COUNTY (SBP)

RNP APCH ⚠ Circling to Rwy 25 NA at night. Circling NA north of Rwy 11-29. ⚠ Rwy 29 helicopter visibility reduction below 3/4 SM NA. For uncompensated Baro-VNAV systems, LNAV/VNAV NA below 0° C or above 52° C.		MISSED APPROACH: Climb to 1100 then climbing left turn to 4100 direct WUNUL and hold, continue climb-in-hold to 4100.		
ATIS* 120.6	SANTA BARBARA APP CON* 127.725 244.575	SAN LUIS TOWER* 124.0 (CTAF) 0 379.9	GND CON 121.6	UNICOM 122.95

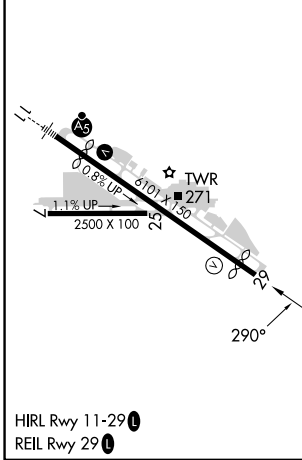


ELEV 212	D	TDZE 212
----------	----------	----------

Procedure NA for arrivals at FABEG on V27, T261 southeast bound.



CATEGORY	A	B	C	D
LPV DA		831-1 ³ / ₄	619 (700-1 ³ / ₄)	
LNAV/VNAV DA		835-1 ³ / ₄	623 (700-1 ³ / ₄)	
LNAV MDA	1000-1 788 (800-1)	1000-1 ¹ / ₄ 788 (800-1 ¹ / ₄)	1000-2 ¹ / ₂ 788 (800-2 ¹ / ₂)	788 (800-2 ¹ / ₂)
C CIRCLING	1000-1 788 (800-1)	1220-1 ¹ / ₂ 1008 (1100-1 ¹ / ₂)	1460-3 1248 (1300-3)	1560-3 1348 (1400-3)



SW-3, 22 FEB 2024 to 21 MAR 2024

SW-3, 22 FEB 2024 to 21 MAR 2024

VORTAC MQO 112.4 Chan 71	APP CRS 084°	Rwy Idg TDZE Apt Elev	N/A N/A 212
---------------------------------------	------------------------	-----------------------------	--

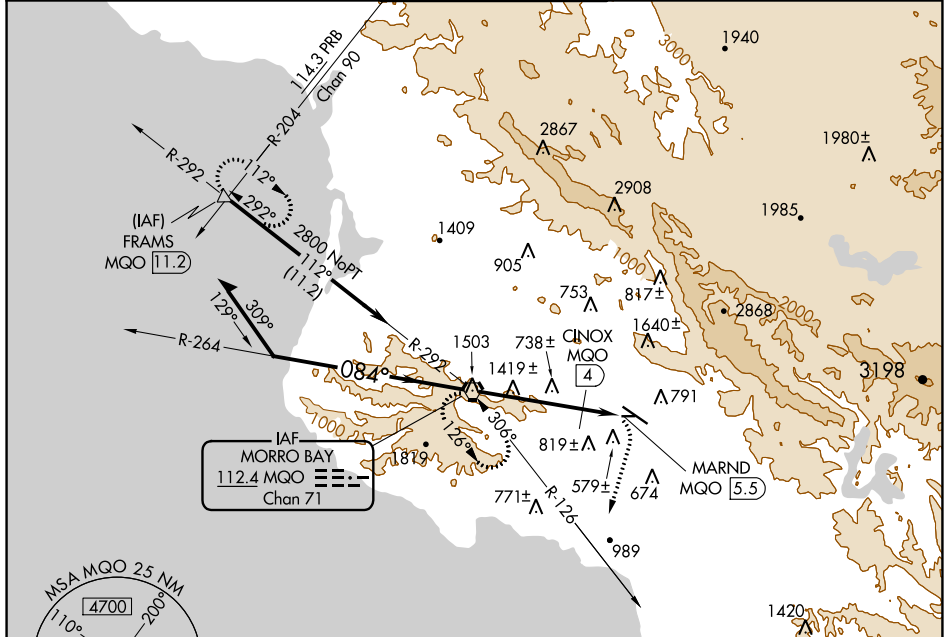
VOR or TACAN-A

SLO COUNTY (SBP)

⚠ Circling NA north of Rwy 11-29.

MISSED APPROACH: Climbing right turn to 3100 via heading 175° and MQO R-126 to MQO VORTAC and hold. (TACAN Aircraft continue climb to 4000 via MQO R-292 to FRAMS 11.2 DME and hold east, right turns, 292° inbound.)

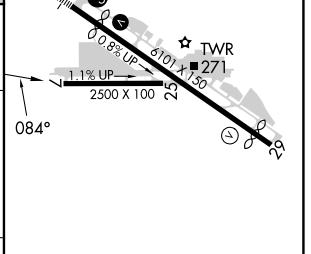
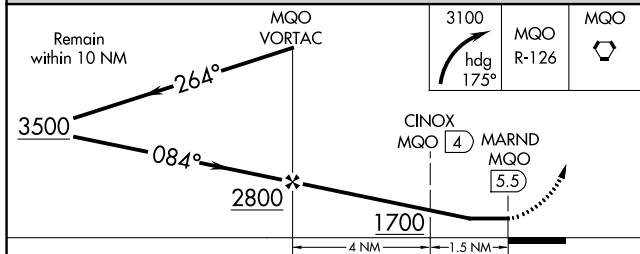
ATIS★ 120.6	SANTA BARBARA APP CON★ 127.725 244.575	SAN LUIS TOWER★ 124.0 (CTAF) 0 379.9	GND CON 121.6	UNICOM 122.95
-----------------------	--	--	-------------------------	-------------------------



SW-3, 22 FEB 2024 to 21 MAR 2024

SW-3, 22 FEB 2024 to 21 MAR 2024

ELEV 212	D
----------	----------



CATEGORY	A	B	C	D	HIRL Rwy 11-29 Ⓛ REIL Rwy 29 Ⓛ
CIRCLING	1700-1¼ 1488 (1500-1¼)	1700-1½ 1488 (1500-1½)	1700-3	1488 (1500-3)	
TACAN OR DME MINIMA					
CIRCLING	1120-1¼ 908 (1000-1¼)	1220-1½ 1008 (1100-1½)	1460-3 1248 (1300-3)	1560-3 1348 (1400-3)	FAF to MAP 5.5 NM
				Knots	60 90 120 150 180
				Min:Sec	5:30 3:40 2:45 2:12 1:50