

LOC I-RVS	APP CRS	Rwy Idg	5102
109.95	010°	TDZE	626
		Apt Elev	638

ILS or LOC RWY 1L

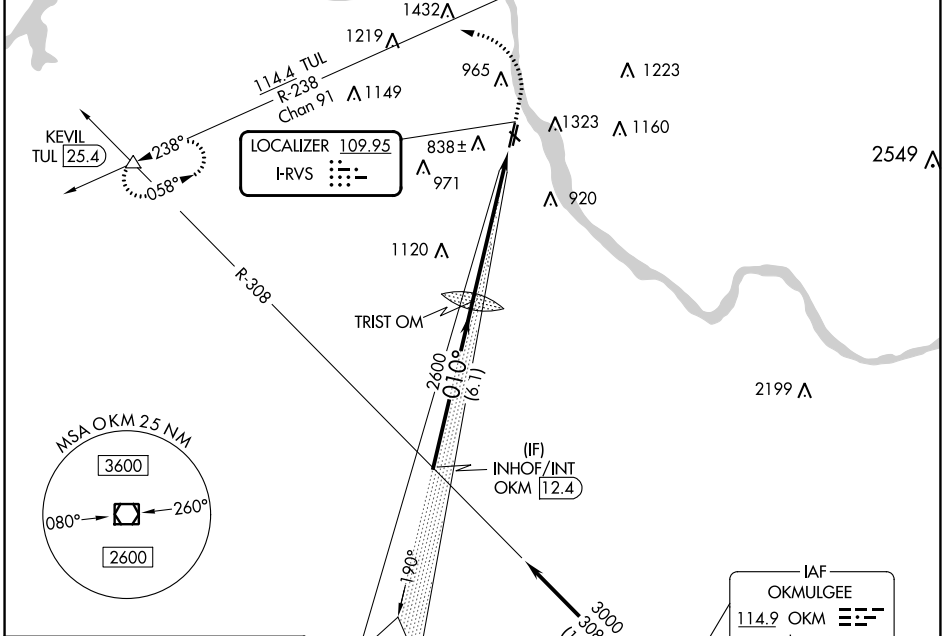
TULSA RIVERSIDE (RVS)



Circling NA northeast of Rwys 31 and 19L.

MISSED APPROACH: Climb to 1500 then climbing left turn to 2600 on heading 280° and TUL VORTAC R-238 to KEVIL INT/TUL 25.4 DME and hold.

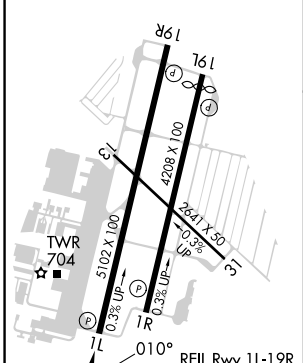
ATIS	TULSA APP CON	RIVERSIDE TOWER *	GND CON	CLNC DEL	UNICOM
126.5	134.7	120.3 (CTAF) 0	121.7	124.5	122.95



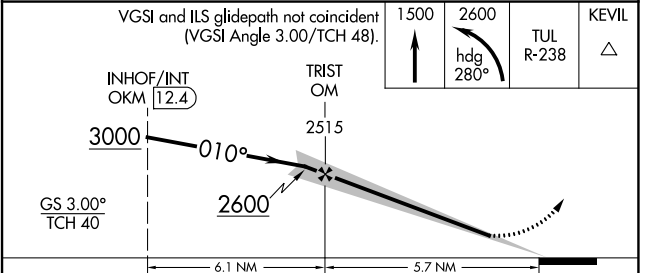
SC-1, 22 FEB 2024 to 21 MAR 2024

SC-1, 22 FEB 2024 to 21 MAR 2024

ELEV 638	D	TDZE 626
----------	----------	----------



Procedure NA for arrival on OKM VOR/DME airway radials 308 CW 359.



CATEGORY	A	B	C	D
S-ILS 1L	826- ³ / ₄ 200 (200- ³ / ₄)			
S-LOC 1L	1220-1	594 (600-1)	1220-1 ³ / ₄	594 (600-1 ³ / ₄)
CIRCLING	1260-1 622 (700-1)	1280-1 642 (700-1)	1280-1 ³ / ₄ 642 (700-1 ³ / ₄)	1360-2 1/4 722 (800-2 1/4)

TULSA, OKLAHOMA

AL-5427 (FAA)

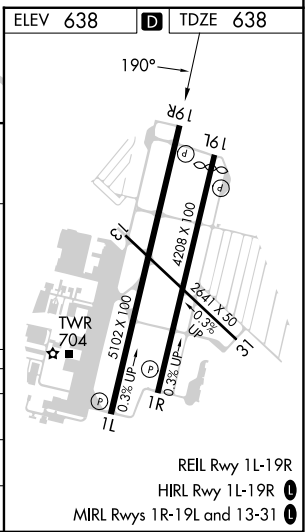
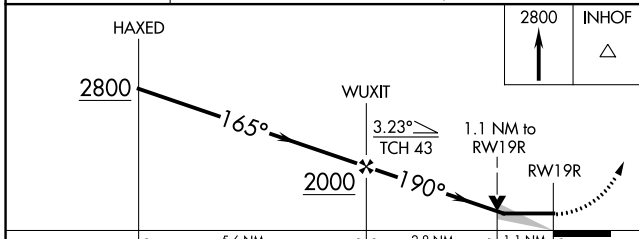
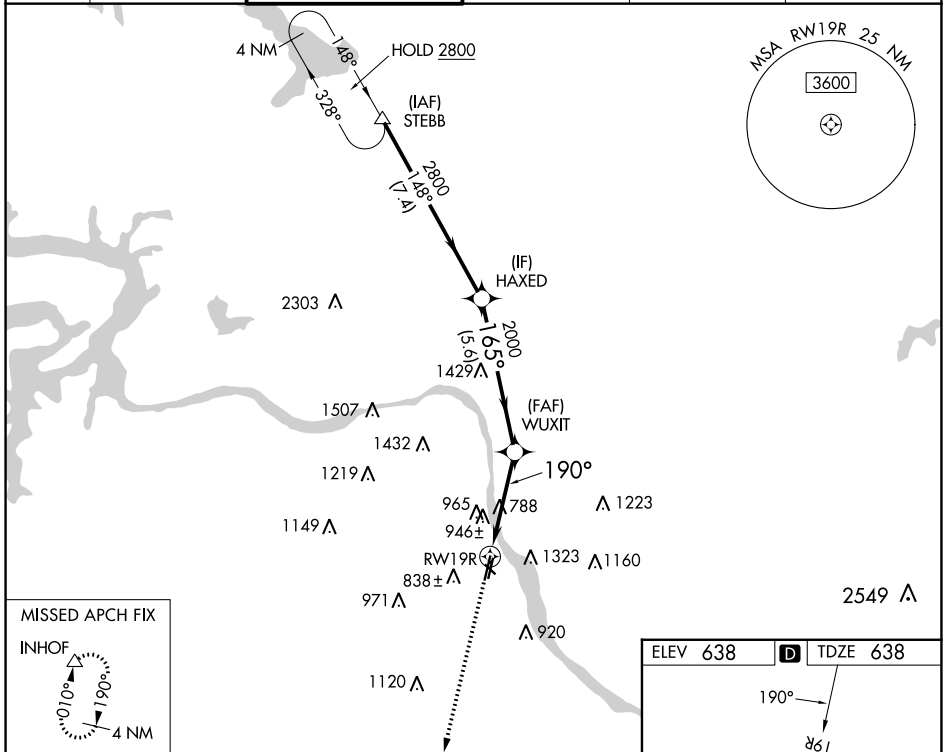
24025

WAAS CH 81939 W19A	APP CRS 190°	Rwy Idg TDZE 638 Apt Elev 638	5102
--	------------------------	---	-------------

RNAV (GPS) RWY 19R

TULSA RIVERSIDE (RVS)

<p>▽ ▲ Circling NA northeast of Rwsys 31 and 19L. DME/DME RNP-0.3 NA.</p>		<p>MISSED APPROACH: Climb to 2800 direct INHOF and hold.</p>			
ATIS 126.5	TULSA APP CON 134.7	RIVERSIDE TOWER * 120.3 (CTAF) 0	GND CON 121.7	CLNC DEL 124.5	UNICOM 122.95



CATEGORY	A	B	C	D
LP MDA	1040-1	402 (500-1)	1040-1 $\frac{1}{8}$	402 (500-1 $\frac{1}{8}$)
LNVA MDA	1200-1	562 (600-1)	1200-1 $\frac{5}{8}$	562 (600-1 $\frac{5}{8}$)
C CIRCLING	1260-1 622 (700-1)	1280-1 642 (700-1)	1280-1 $\frac{3}{4}$ 642 (700-1 $\frac{3}{4}$)	1380-2 $\frac{1}{2}$ 742 (800-2 $\frac{1}{2}$)

TULSA, OKLAHOMA
Amdt 1 02MAR17

36°02'N-95°59'W

RNAV (GPS) RWY 19R

TULSA RIVERSIDE (RVS)

SC-1, 22 FEB 2024 to 21 MAR 2024

SC-1, 22 FEB 2024 to 21 MAR 2024

WAAS CH 97321 W01A	APP CRS 010°	Rwy Idg 5102 TDZE 626 Apt Elev 638
--	------------------------	---

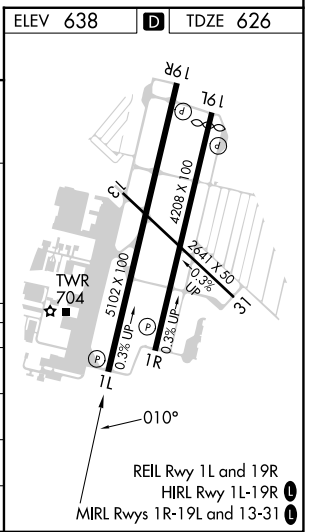
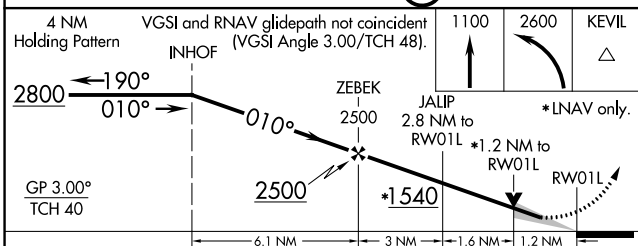
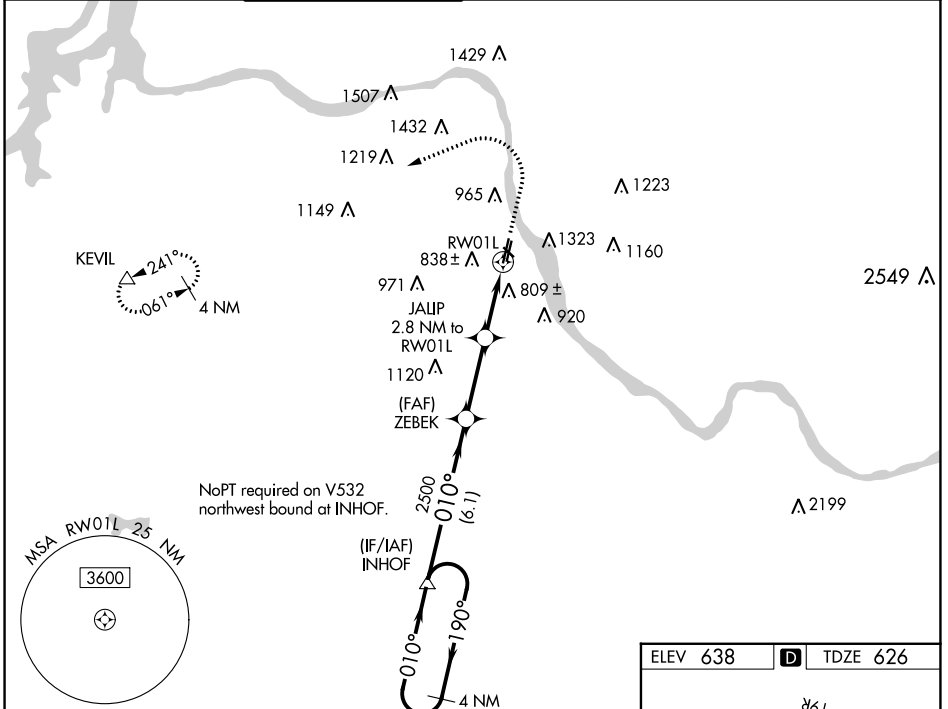
RNAV (GPS) RWY 1L

TULSA RIVERSIDE (RVS)

⚠ For uncompensated Baro-VNAV systems, LNAV/VNAV NA below -12°C (11°F) or above 54°C (130°F). Circling NA northeast of Rwy 31 and 19L. DME/DME RNP-0.3 NA.

⚠ MISSED APPROACH: Climb to 1100 then climbing left turn to 2600 direct KEVIL and hold.

ATIS 126.5	TULSA APP CON 134.7	RIVERSIDE TOWER * 120.3 (CTAF) 0	GND CON 121.7	CLNC DEL 124.5	UNICOM 122.95
----------------------	-------------------------------	--	-------------------------	--------------------------	-------------------------



CATEGORY	A	B	C	D
LPV DA	826- ³ / ₄ 200 (200- ³ / ₄)			
LNAV/VNAV DA	1126- ¹ / ₄ 500 (500- ¹ / ₄)			
LNAV MDA	1060-1	434 (500-1)	1060- ¹ / ₄	434 (500- ¹ / ₄)
C CIRCLING	1260-1 622 (700-1)	1280-1 642 (700-1)	1280- ³ / ₄ 642 (700- ³ / ₄)	1380- ² / ₂ 742 (800- ² / ₂)

SC-1, 22 FEB 2024 to 21 MAR 2024

SC-1, 22 FEB 2024 to 21 MAR 2024

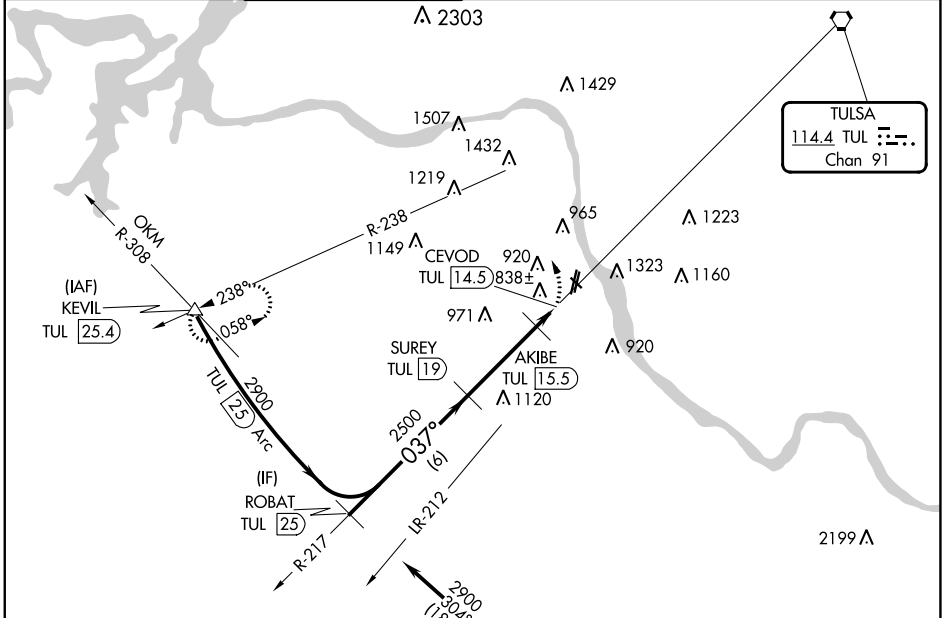
VORTAC TUL 114.4 Chan 91	APP CRS 037°	Rwy Idg TDZE Apt Elev N/A N/A 638
--	------------------------	---

VOR/DME-A
TULSA RIVERSIDE (RVS)

⚠ Circling NA northeast of Rwys 31 and 19L. When local altimeter setting not received, use Tulsa Int'l altimeter setting and increase MDA 40 feet; increase Cat C/D visibilities ¼ mile.

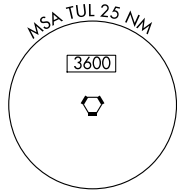
MISSED APPROACH: Climbing left turn to 2900 via heading 280° and TUL R-238 to KEVIL Int/TUL 25.4 DME and hold.

ATIS 126.5	TULSA APP CON 134.7	RIVERSIDE TOWER * 120.3 (CTAF) 0	GND CON 121.7	CLNC DEL 124.5	UNICOM 122.95
----------------------	-------------------------------	---	-------------------------	--------------------------	-------------------------

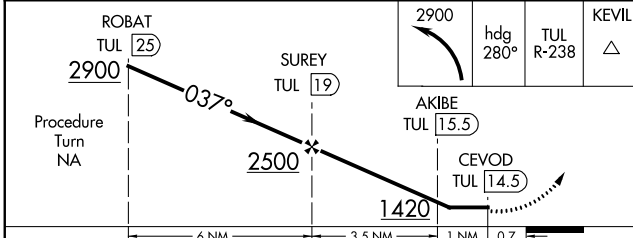
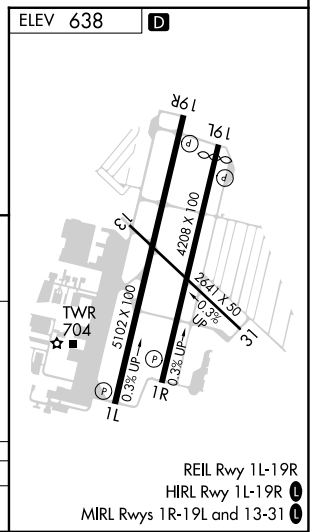


SC-1, 22 FEB 2024 to 21 MAR 2024

SC-1, 22 FEB 2024 to 21 MAR 2024



IAF
OKMULGEE
114.9 OKM
Chan 96



CATEGORY	A	B	C	D
C CIRCLING	1260-1 622 (700-1)	1280-1 642 (700-1)	1280-1 ¾ 642 (700-1 ¾)	1380-2 ½ 742 (800-2 ½)

REIL Rwy 11L-19R
HIRL Rwy 11L-19R **0**
MIRL Rwys 1R-19L and 13-31 **0**