

(ALPYN1.ALPYN) 22307

ALPYN ONE DEPARTURE (RNAV)

AL-346 (FAA)

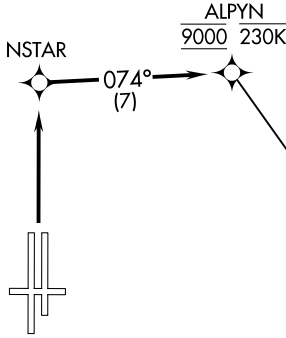
RENO/TAHOE INTL (RNO)
RENO, NEVADA

TOP ALTITUDE:
FL190

RNAV 1 - DME/DME/IRU or GPS.

RADAR required for non-GPS equipped aircraft.

D-ATIS
135.8 363.0
CLNC DEL
124.9 370.85
CPDLC
GND CON
121.9 348.6
RENO TOWER
118.7 257.8
NORCAL DEP CON
119.2 279.55



0 400
* 6 400
1 3 2°
(27)

RYANN
15000

1 5000
* 9 300
1 23°
(21)

YERIN
16000

TAKEOFF MINIMUMS

Rwys 8, 26, 17L/R: NA-ATC.

Rwy 35L: Standard with minimum climb of 500' per NM to 4915, then 314' per NM to 8100.

Rwy 35R: Standard with minimum climb of 500' per NM to 4915, then 317' per NM to 8100.

NOTE: Chart not to scale.



DEPARTURE ROUTE DESCRIPTION

TAKEOFF RUNWAYS 35L/R: Climb direct NSTAR, then on track 074° to cross ALPYN at 9000 and at or below 230K, thence

. . . .on YERIN transition maintain FL190 or assigned altitude. Expect filed altitude 5 minutes after departure.

YERIN TRANSITION (ALPYN1.YERIN)

ALPYN ONE DEPARTURE (RNAV)

(ALPYN1.ALPYN) 03NOV22

RENO, NEVADA
RENO/TAHOE INTL (RNO)

SW-4, 22 FEB 2024 to 21 MAR 2024

SW-4, 22 FEB 2024 to 21 MAR 2024

(FMG9.FMG) 22307

MUSTANG NINE DEPARTURE

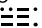
AL-346 (FAA)

RENO/TAHOE INTL (RNO)
RENO, NEVADA

D-ATIS
135.8 363.0
CLNC DEL
124.9 370.85
CPDLC
GND CON
121.9 348.6
RENO TOWER
118.7 257.8
NORCAL DEP CON
119.2 279.55

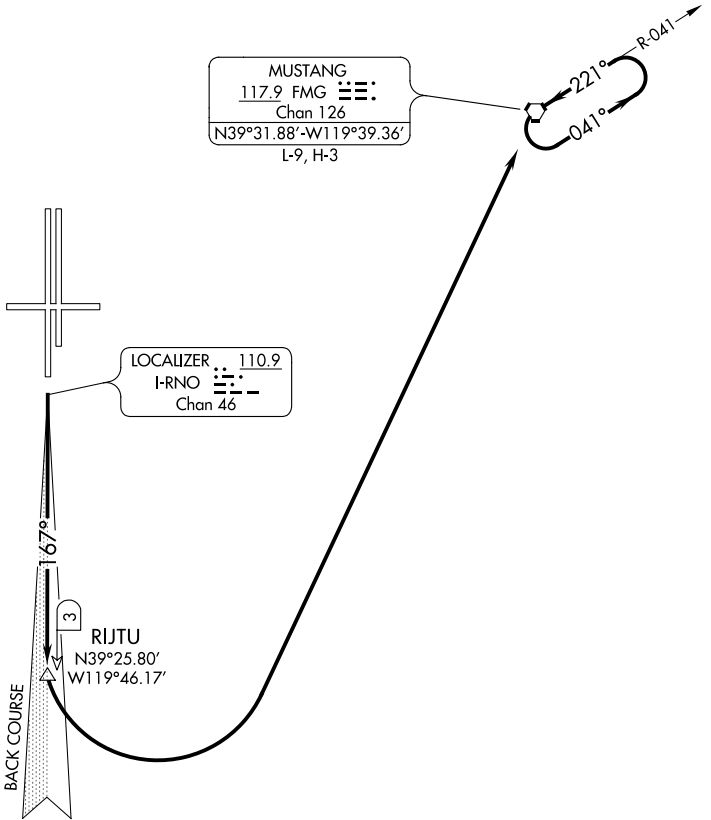
DME required.

**TOP ALTITUDE:
10000**

MUSTANG
117.9 FMG 
Chan 126
N39°31.88'-W119°39.36'
L-9, H-3

LOCALIZER . 110.9
I-RNO 
Chan 46

RIJTU
N39°25.80'
W119°46.17'



TAKEOFF MINIMUMS

Rwy 8: NA- obstacles.

Rwys 26, 35L/R: NA- ATC.

Rwy 17L: Standard with minimum climb of 740' per NM to 8000 or, 600-1¼ with minimum climb of 525' per NM to 8000.

Rwy 17R: Standard with minimum climb of 740' per NM to 8000 or, 600-1¼ with minimum climb of 525' per NM to 8000.

NOTE: Chart not to scale.

DEPARTURE ROUTE DESCRIPTION

TAKEOFF RUNWAYS 17L/R: Climb to 10000 or assigned altitude, on I-RNO south course to RIJTU/3 DME, then left turn direct FMG VORTAC. Climb in FMG holding pattern to depart FMG VORTAC at or above MEA/MCA for direction of flight. Expect filed altitude within 5 minutes after departure.

MUSTANG NINE DEPARTURE

(FMG9.FMG) 03NOV22

RENO, NEVADA
RENO/TAHOE INTL (RNO)

SW-4, 22 FEB 2024 to 21 MAR 2024

SW-4, 22 FEB 2024 to 21 MAR 2024

(PVINE5.PVINE) 23166

PVINE FIVE DEPARTURE (RNAV)

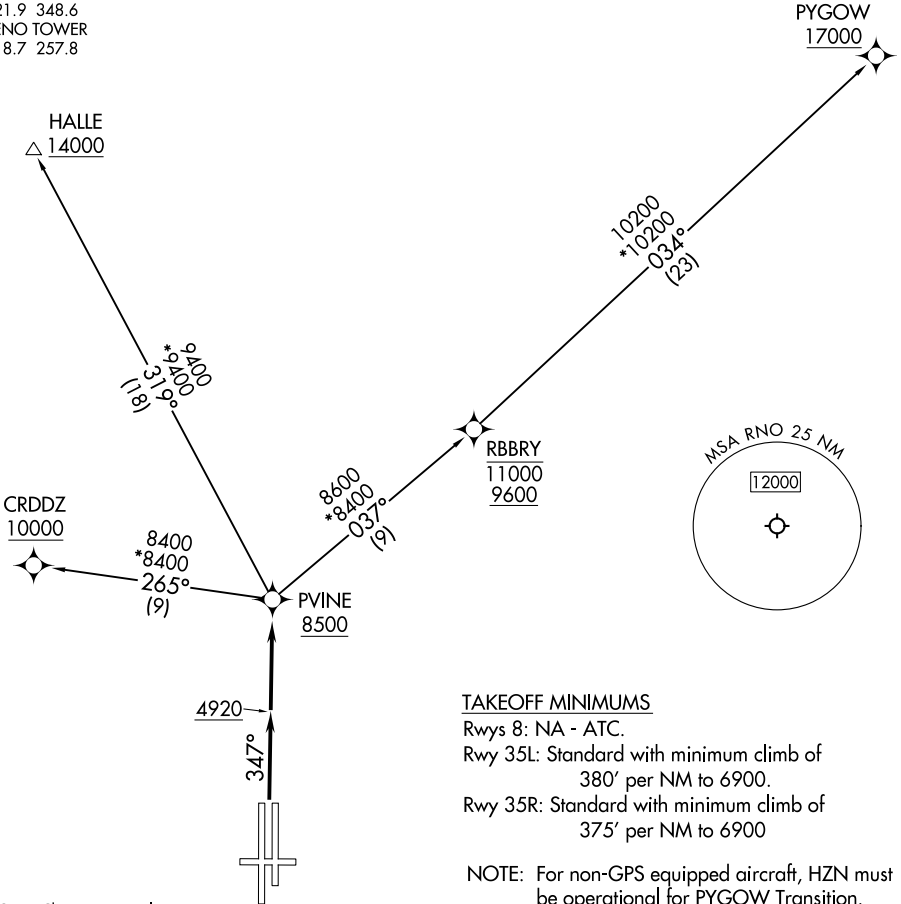
AL-346 (FAA)

RENO/TAHOE INTL (RNO)
RENO, NEVADA

NORCAL DEP CON
126.3 353.9
D-ATIS
135.8 363.0
CLNC DEL
124.9 370.85
GND CON
121.9 348.6
RENO TOWER
118.7 257.8

RNAV 1 - DME/DME/IRU or GPS.
RADAR required for non-GPS equipped aircraft.

**TOP ALTITUDE:
FL190**



TAKEOFF MINIMUMS

Rwys 8: NA - ATC.

Rwy 35L: Standard with minimum climb of 380' per NM to 6900.

Rwy 35R: Standard with minimum climb of 375' per NM to 6900

NOTE: For non-GPS equipped aircraft, HZN must be operational for PYGOW Transition.

NOTE: Chart not to scale.



DEPARTURE ROUTE DESCRIPTION

TAKEOFF RUNWAYS 35L/R: Climb on heading 347° to 4920, then direct PVINE, thence. . . .
. . . .Maintain FL190 or assigned altitude. Expect filed altitude 5 minutes after departure.

CRDDZ TRANSITION (PVINE5.CRDDZ)

HALLE TRANSITION (PVINE5.HALLE)

PYGOW TRANSITION (PVINE5.PYGOW)

PVINE FIVE DEPARTURE (RNAV)

(PVINE5.PVINE) 15JUN23

RENO, NEVADA
RENO/TAHOE INTL (RNO)

SW-4, 22 FEB 2024 to 21 MAR 2024

SW-4, 22 FEB 2024 to 21 MAR 2024

RENO ONE DEPARTURE

AL-346 (FAA)

RENO/TAHOE INTL (RNO)
RENO, NEVADA

TAKEOFF MINIMUMS

RADAR required.

**TOP ALTITUDE:
FL190**

D-ATIS	135.8	363.0
CLNC DEL	124.9	370.85
CPDLC		
GND CON	121.9	348.6
RENO TOWER	118.7	257.8

Rwy 8: NA- Obstacles.

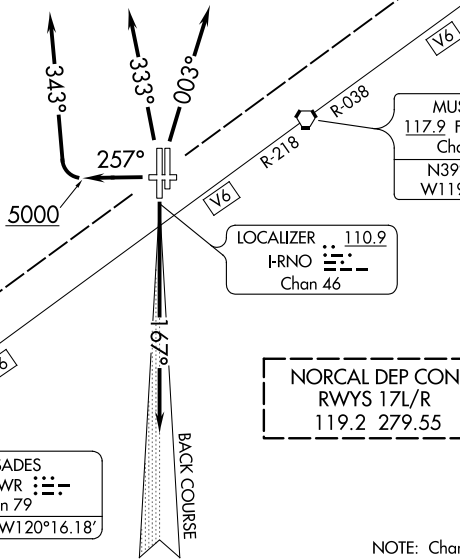
Rwy 17L: Standard with minimum climb of 730' per NM to 10900,
or 600-1¼ with minimum climb of 352' per NM to 10900.

Rwy 17R: Standard with minimum climb of 460' per NM to 10900,
or 300-1 with minimum climb of 395' per NM to 10900.

Rwy 26: Standard with minimum climb of 500' per NM to 9700.

Rwys 35L/R: Standard with minimum climb of 480' per NM to 8700,
or 500-1½ with minimum climb of 430' per NM to 8700.

NORCAL DEP CON
RWYS 26 AND 35L/R
126.3 353.9



LOCALIZER 110.9
RNO
Chan 46

PALISADES
113.2 SWR
Chan 79
N39°10.82'-W120°16.18'

NORCAL DEP CON
RWYS 17L/R
119.2 279.55

NOTE: Chart not to scale.

SW-4, 22 FEB 2024 to 21 MAR 2024

SW-4, 22 FEB 2024 to 21 MAR 2024

DEPARTURE ROUTE DESCRIPTION

TAKEOFF RUNWAYS 17L/R: Climb on heading 167° and RNO localizer south course.

Thence. . .

TAKEOFF RUNWAY 26: Climb on heading 257° to 5000 then climbing right turn heading 343°. Thence. . .

TAKEOFF RUNWAYS 35L/R: Climb on heading 333° CW 003° as assigned by ATC. Thence. . .

. . . All aircraft maintain FL190 or assigned altitude. Expect filed altitude within 5 minutes after departure. Expect RADAR vectors to assigned route/fix.

LOST COMMUNICATIONS: If not in contact with departure control within one minute after takeoff, maintain assigned heading until passing 10000, thence. . .

RUNWAYS 17L/R DEPARTURES: Turn left direct FMG VORTAC, then on assigned route.

RUNWAYS 26 and 35L/R DEPARTURES: Turn right direct FMG VORTAC, then on assigned route.

RENO ONE DEPARTURE

WAGGE SEVEN DEPARTURE
(WAGGEZ, WAGGE) 03NOV22

(WAGGEZ, WAGGE) 23222
WAGGE SEVEN DEPARTURE

D-ATIS
135.8 363.0
CLINC DEL
124.9 370.85
CPDLC
GND CON
121.9 348.6
RENO TOWER
118.7 257.8
NORCAL DEP CON
119.2 279.55



**TOP ALTITUDE:
FL190**

MUSTANG
117.9 FMG
Chan 126

LOVELOCK
116.5 LLC
Chan 112
N40°07.52'-W118°34.66'
L-9-11, H-3

LOCALIZER 110.9
I-RNO
Chan 46

HAZEN
114.1 HZN
Chan 88

PALISADES
113.2 SWR
Chan 79

JERGA
N39°21.03'
W119°30.21'

WAGGE
N39°15.71'
W119°46.19'

BACK COURSE

NOTE: Chart not to scale.

TAKEOFF MINIMUMS

Rwys 8, 26, 35L/R: NA- ATC.
Rwy 17L: Standard with minimum climb of 740' per NM to 8000.
Rwy 17R: Standard with minimum climb of 370' per NM to 9200.

DEPARTURE ROUTE DESCRIPTION

TAKEOFF RUNWAY 17L: Climbing right turn heading 177° to intercept I-RNO south course to WAGGE INT, thence. . . .

TAKEOFF RUNWAY 17R: Climb on I-RNO south course to WAGGE INT, thence. . . .

. . . .on (transition) or assigned route. All aircraft maintain FL190 or assigned altitude. Expect filed altitude within 5 minutes after departure.

LOVELOCK TRANSITION (WAGGEZ.LLC): From over WAGGE INT on HZN R-230 to JERGA INT, then on LLC R-206 to LLC VORTAC.

AL-346 (FAA)

RENO/TAHOE INTL (RNO)
RENO, NEVADA

RENO, NEVADA
RENO/TAHOE INTL (RNO)

(ZEFFR8.ZEFFF) 23166

ZEFFR EIGHT DEPARTURE (RNAV)

AL-346 (FAA)

RENO/TAHOE INTL (RNO)
RENO, NEVADA

NORCAL DEP CON
119.2 279.55
D-ATIS
135.8 363.0
CLNC DEL
124.9 370.85
GND CON
121.9 348.6
RENO TOWER
118.7 257.8

RNAV 1 - GPS.

RADAR required.

**TOP ALTITUDE:
FL190**

TAKEOFF MINIMUMS

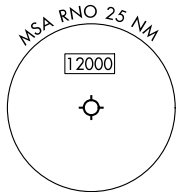
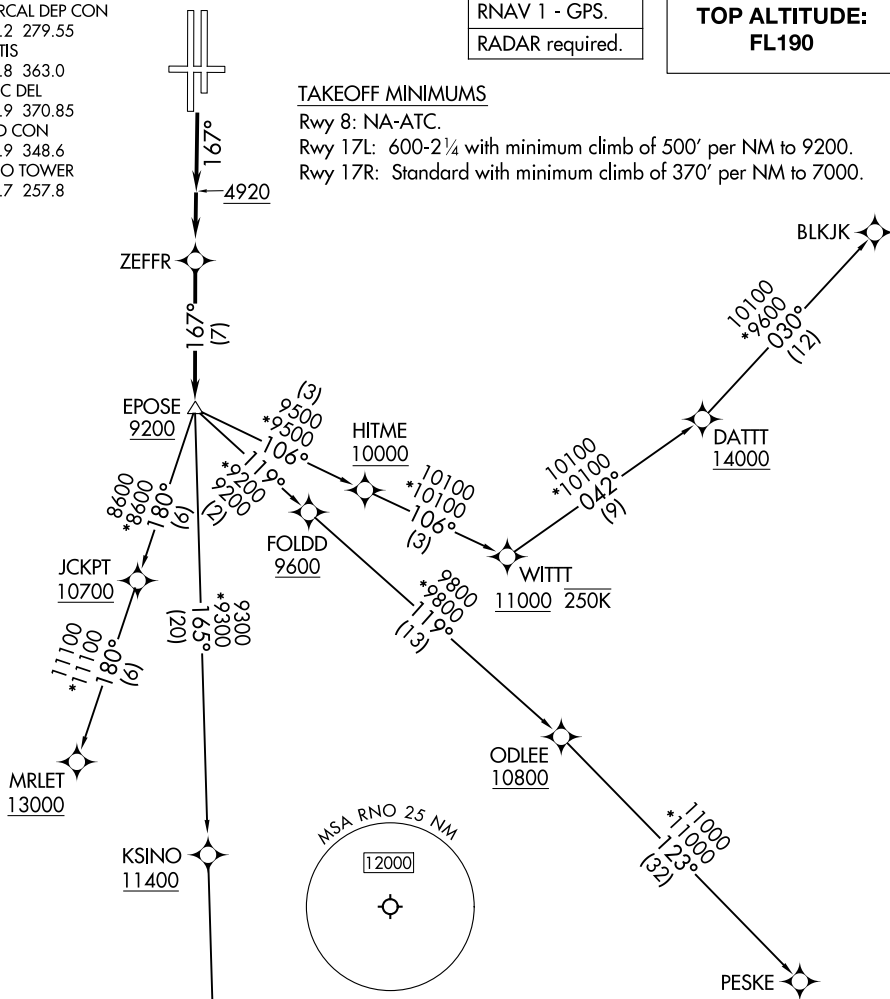
Rwy 8: NA-ATC.

Rwy 17L: 600-2¼ with minimum climb of 500' per NM to 9200.

Rwy 17R: Standard with minimum climb of 370' per NM to 7000.

SW-4, 22 FEB 2024 to 21 MAR 2024

SW-4, 22 FEB 2024 to 21 MAR 2024



DEPARTURE ROUTE DESCRIPTION

TAKEOFF RUNWAYS 17L/R: Climb on heading 167° to 4920, then direct ZEFFR, then on depicted route, thence
. . . .maintain FL190 or assigned altitude. Expect filed altitude 5 minutes after departure.

BLKJK TRANSITION (ZEFFR8.BLKJK)
DARBI TRANSITION (ZEFFR8.DARBI)
MRLET TRANSITION (ZEFFR8.MRLET)
PESKE TRANSITION (ZEFFR8.PESKE)

NOTE: Chart not to scale.

ZEFFR EIGHT DEPARTURE (RNAV)

(ZEFFR8.ZEFFF) 15JUN23

RENO, NEVADA
RENO/TAHOE INTL (RNO)